



# Xbox One Wireless Controller Model 1708 Bottom Motherboard Replacement

This guide will show you how to replace the Xbox One Wireless Controller bottom motherboard.

Written By: Jesse Wilson



## INTRODUCTION

The Bottom Motherboard on your Xbox Controller may need to be replaced if the controller is not working. Complete removal will require soldering. The link to the [soldering guide](#) is included to help you. This guide will show you how to access the bottom motherboard on your Xbox One Wireless Controller Model 1708.



### TOOLS:

- [Tweezers](#) (1)
- [T6 Torx Screwdriver](#) (1)
- [iFixit Opening Tools](#) (1)
- [TR9 Torx Security Screwdriver](#) (1)



### PARTS:

- [Xbox One S Controller \(1708\) Motherboard](#) (1)

## Step 1 — Cover Plate



- Slide the battery cover toward the top of the controller to remove it.
- Lift up the batteries or the battery pack from the battery compartment.

## Step 2



- Insert a plastic opening tool into the top seam, and gently work the opening tool to the bottom of the controller.
- Continue using the opening tool to gently pry the side plate off of the controller.
- Repeat this process for the second side plate.

## Step 3



- Gently peel the battery label or punch a hole in the center of the sticker in the battery compartment to reveal the hidden screw.
- Remove the five 9mm torx-9 security screws from the back of the controller.

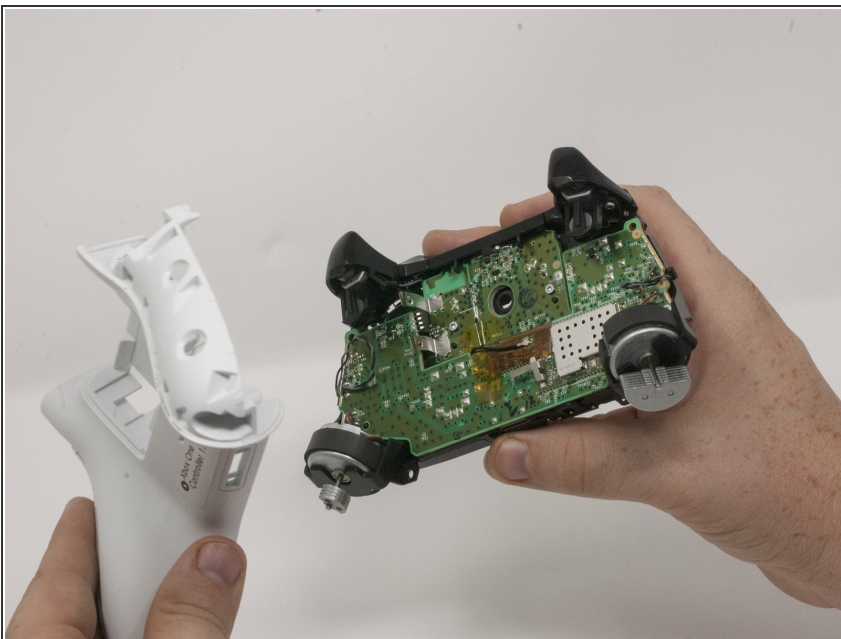


## Step 4



- Orient the controller so the front plate is facing up.
- Lift the front cover off of the controller.

## Step 5



- Turn the controller face down and gently lift the rear plate.

## Step 6 — Directional Pad



- Turn the device over and remove the directional pad by gently pulling it away from the controller.

## Step 7 — Joysticks



- Pull the joysticks off of the controller.

## Step 8 — Top Motherboard



- ⚠ If the rumble motors fall out of frame, the wires may disconnect from the motherboard. The wires will have to be soldered to reattach the motor.
- Turn the device over and remove the two 70mm torx-6 screws in the bottom left and right corners.

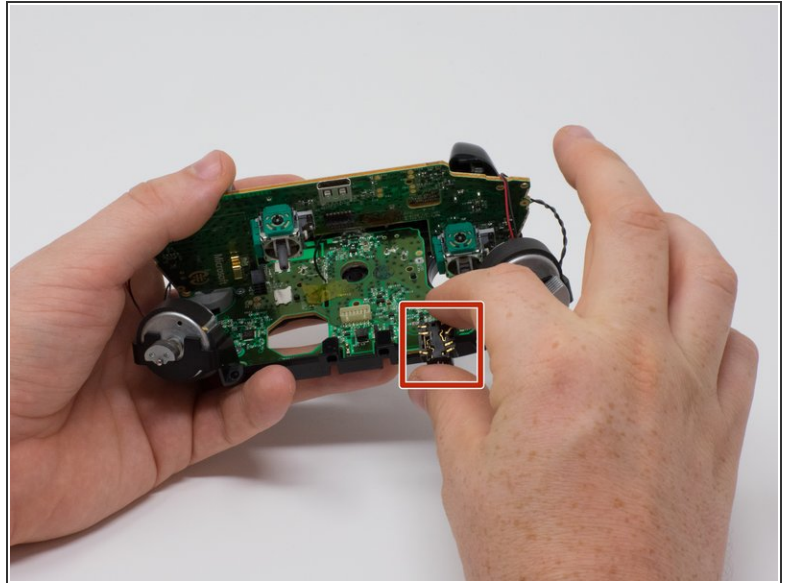
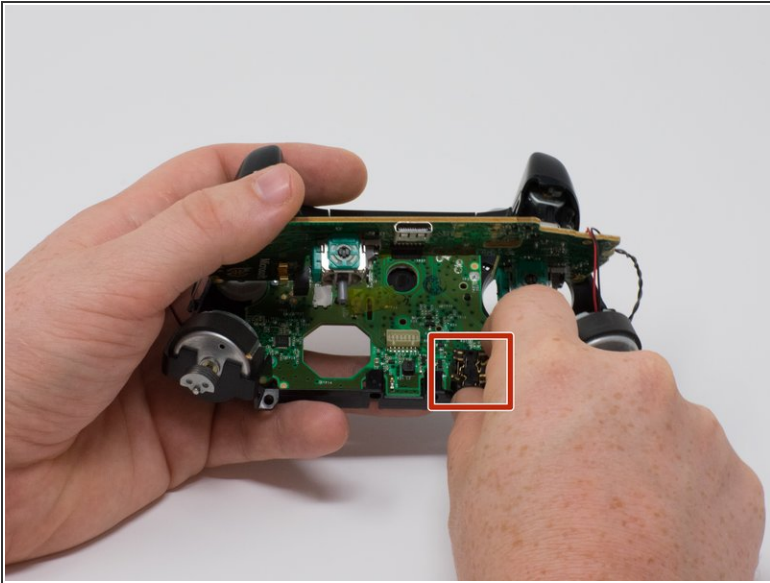
## Step 9



- Firmly grasp the top and bottom motherboards in opposite hands, then gently pull them apart.
- ⓘ The top motherboard is still connected to the bottom motherboard. To fully separate the top motherboard, you will need to use a soldering iron.

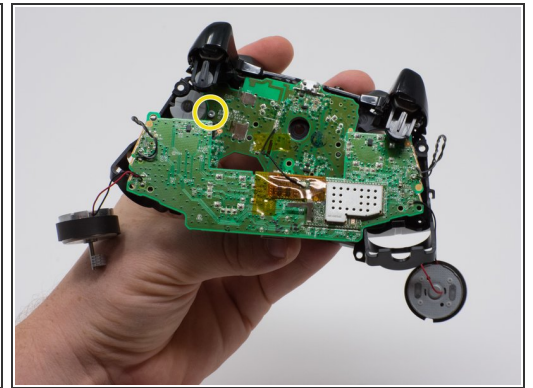
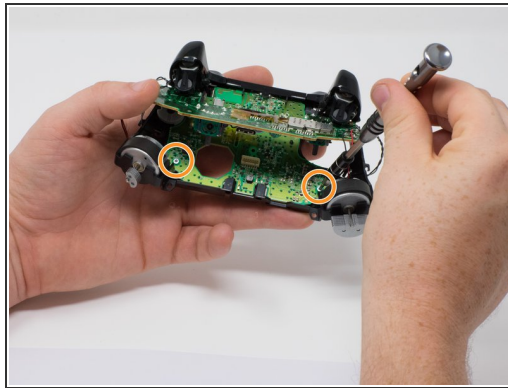


## Step 10 — 3.5 mm Audio Port



- Remove the audio port from the bottom mother board.

## Step 11 — Bottom Motherboard



- Remove the three 70mm torx-6 screws from the center of the bottom motherboard.
- Remove the two 70mm torx-6 screws next to the rumble motors on the bottom motherboard.
- Remove the one 70mm torx-6 screw located on the left side of the bottom motherboard.

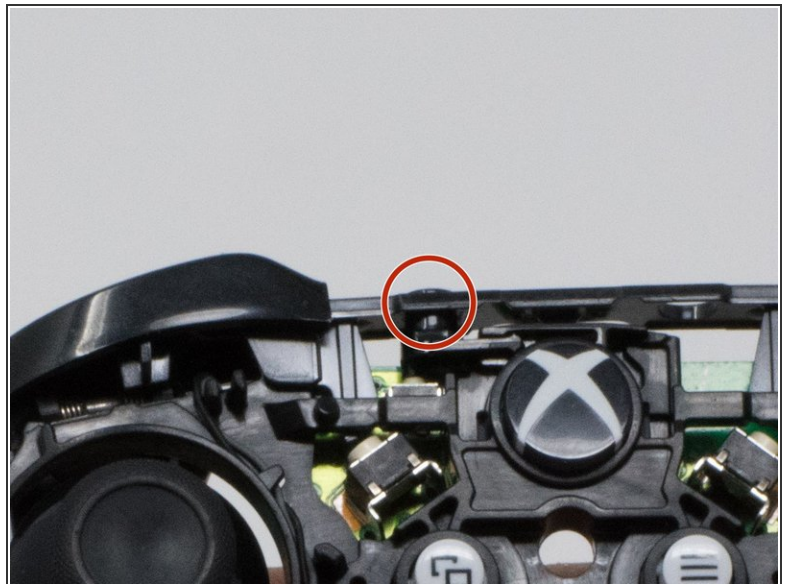


## Step 12



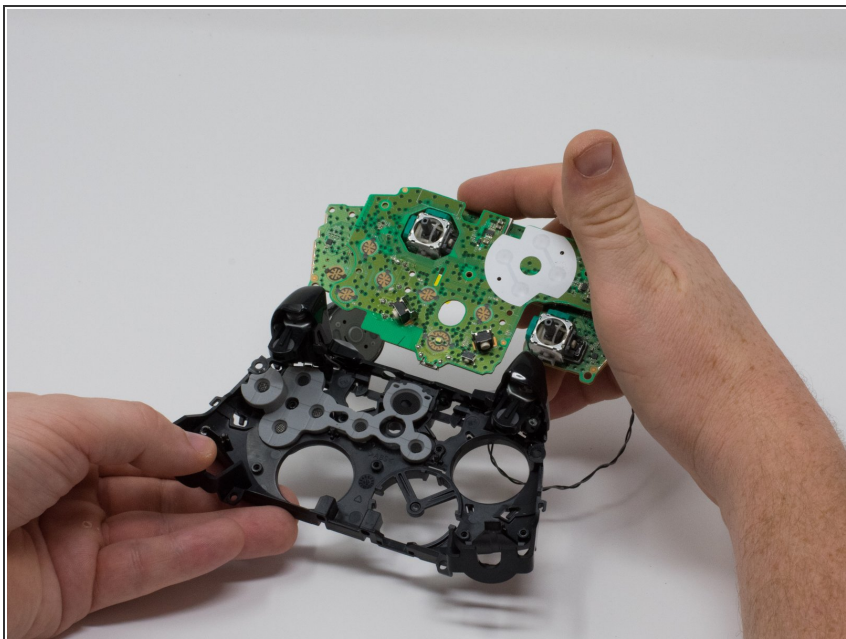
- Use a plastic spudger to lift the plastic clip off the front pegs.
- Remove the plastic clip by sliding it upwards.

## Step 13



- Use a spudger to release the small hooks at each end of the left and right bumper.
- After you release these hooks, be careful as you separate the face plate from the back of the controller. The connect/sync button (see second image) is held in by this face plate and will come loose as you perform this step.

## Step 14



- To avoid disconnecting the wires connected to the motherboard, lift the mother board away from the plastic frame as if opening a laptop.

To reassemble your device, follow these instructions in reverse order.