

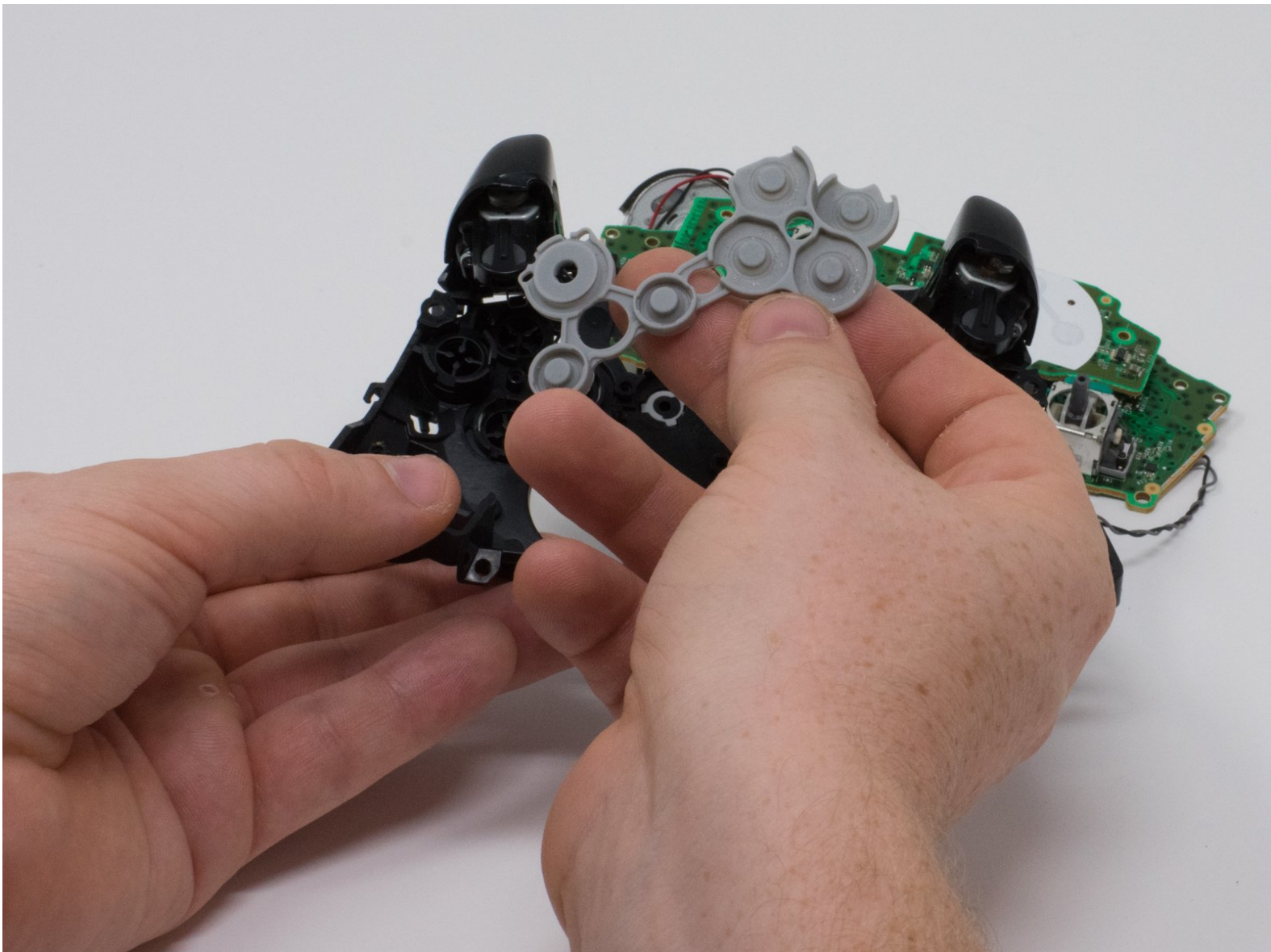


Xbox One Wireless Controller Model 1708

Button Replacement

This guide will teach you how to access and replace the Front Buttons on your Xbox One Wireless Controller Model 1708.

Written By: Dylan Gross



INTRODUCTION

The Front Buttons on your Xbox Controller could become unresponsive or sticky. If this happens it could be necessary to remove the Front Buttons to either replace or clean them. This guide will teach you how to access and replace the Front Buttons on your Xbox One Wireless Controller Model 1708.

TOOLS:

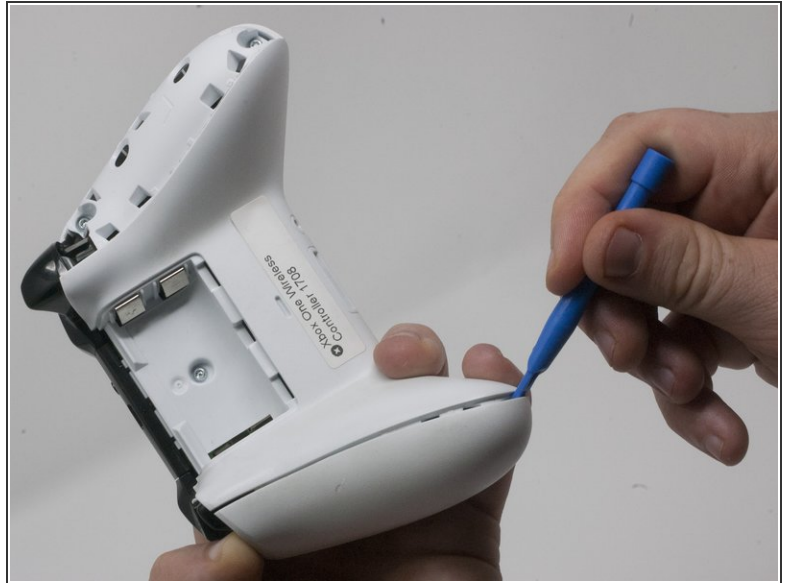
- [T6 Torx Screwdriver](#) (1)
 - [iFixit Opening Tools](#) (1)
 - [TR9 Torx Security Screwdriver](#) (1)
-

Step 1 — Cover Plate



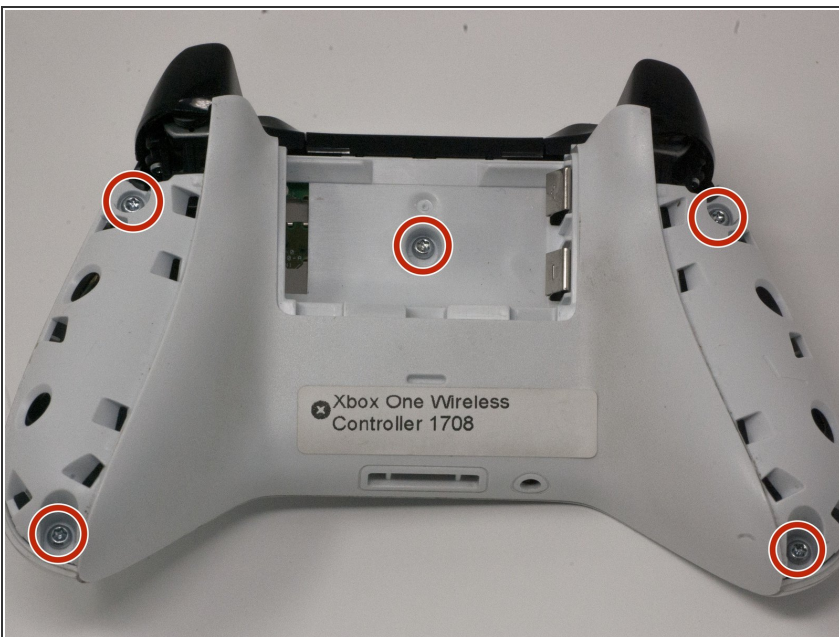
- Slide the battery cover toward the top of the controller to remove it.
- Lift up the batteries or the battery pack from the battery compartment.

Step 2



- Insert a plastic opening tool into the top seam, and gently work the opening tool to the bottom of the controller.
- Continue using the opening tool to gently pry the side plate off of the controller.
- Repeat this process for the second side plate.

Step 3



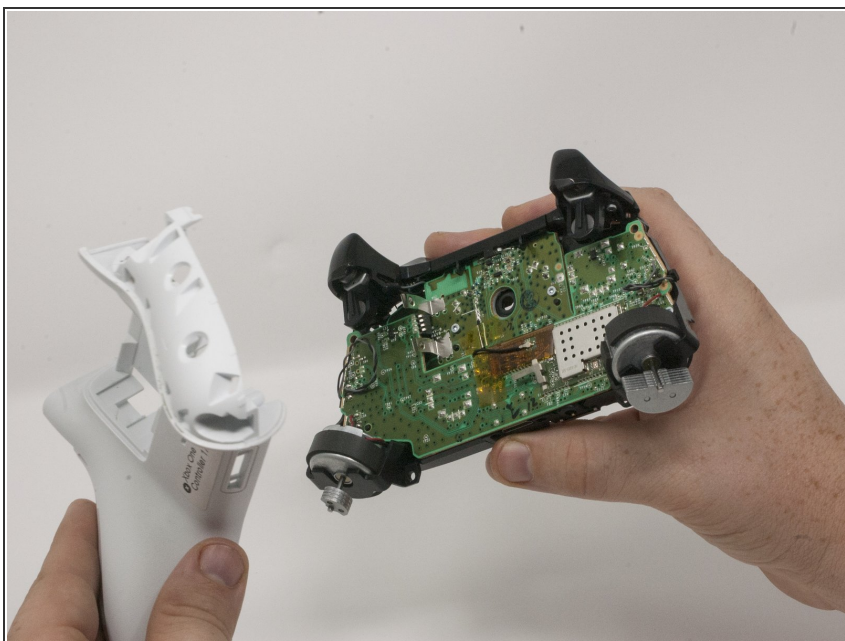
- Gently peel the battery label or punch a hole in the center of the sticker in the battery compartment to reveal the hidden screw.
- Remove the five 9mm torx-9 security screws from the back of the controller.

Step 4



- Orient the controller so the front plate is facing up.
- Lift the front cover off of the controller.

Step 5



- Turn the controller face down and gently lift the rear plate.

Step 6 — Directional Pad



- Turn the device over and remove the directional pad by gently pulling it away from the controller.

Step 7 — Joysticks



- Pull the joysticks off of the controller.

Step 8 — Top Motherboard



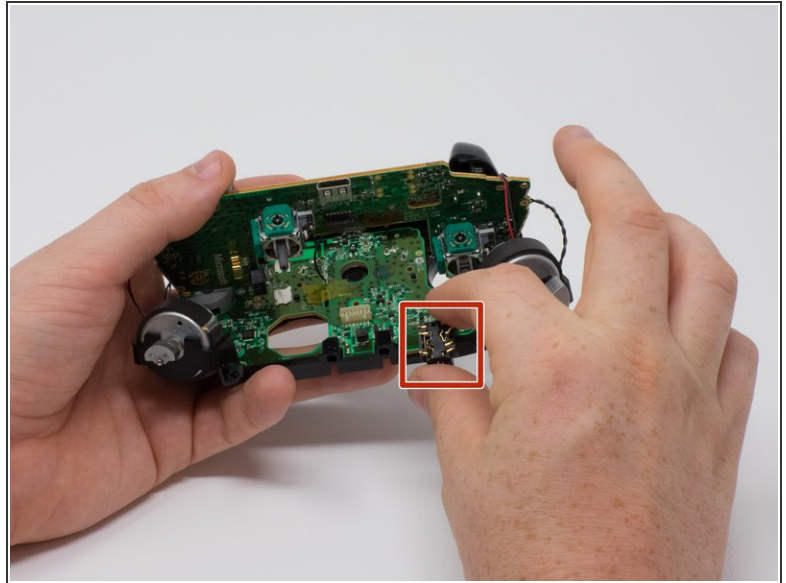
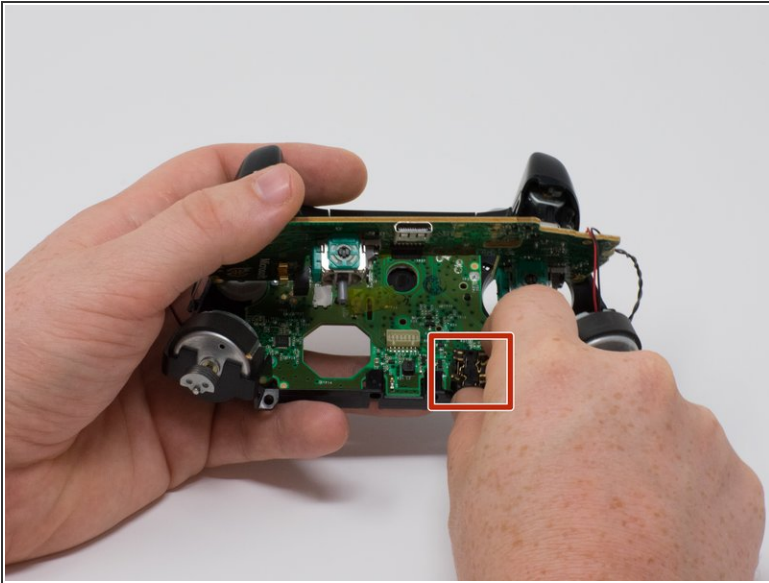
- ⚠ If the rumble motors fall out of frame, the wires may disconnect from the motherboard. The wires will have to be soldered to reattach the motor.
- Turn the device over and remove the two 70mm torx-6 screws in the bottom left and right corners.

Step 9



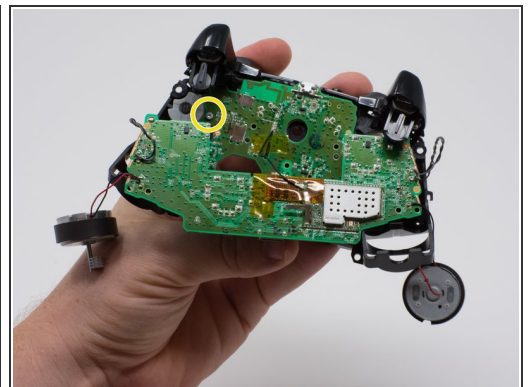
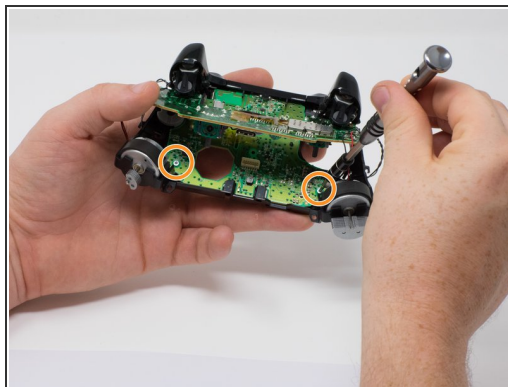
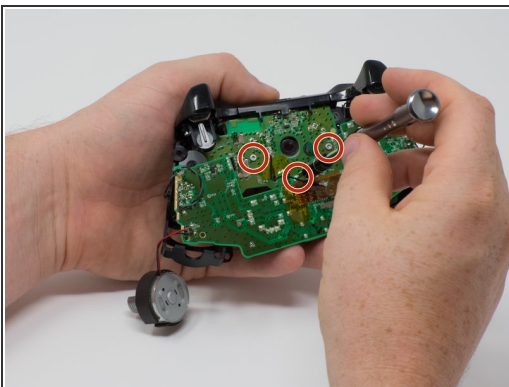
- Firmly grasp the top and bottom motherboards in opposite hands, then gently pull them apart.
- ⓘ The top motherboard is still connected to the bottom motherboard. To fully separate the top motherboard, you will need to use a soldering iron.

Step 10 — 3.5 mm Audio Port



- Remove the audio port from the bottom mother board.

Step 11 — Bottom Motherboard



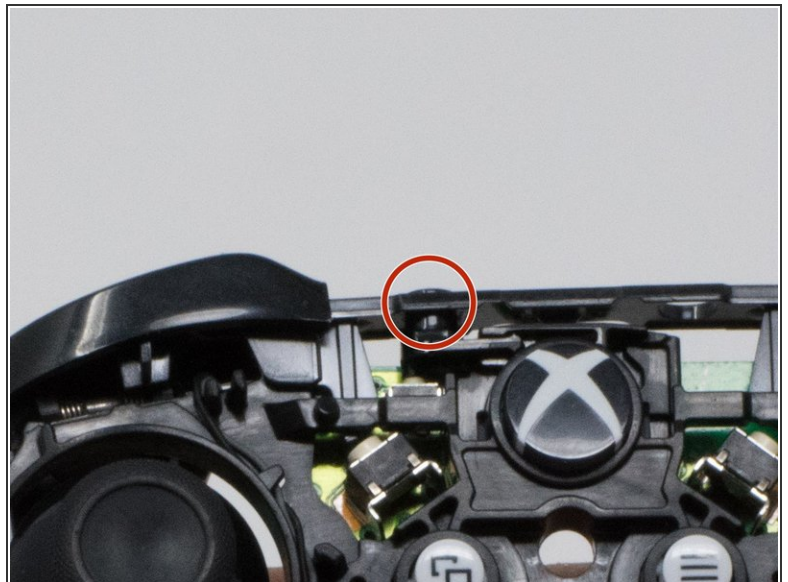
- Remove the three 70mm torx-6 screws from the center of the bottom motherboard.
- Remove the two 70mm torx-6 screws next to the rumble motors on the bottom motherboard.
- Remove the one 70mm torx-6 screw located on the left side of the bottom motherboard.

Step 12



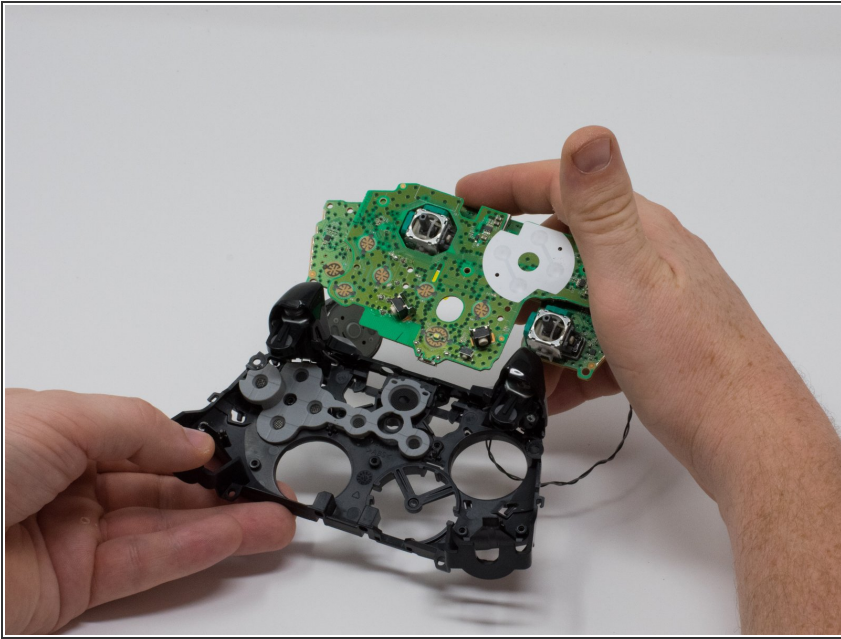
- Use a plastic spudger to lift the plastic clip off the front pegs.
- Remove the plastic clip by sliding it upwards.

Step 13



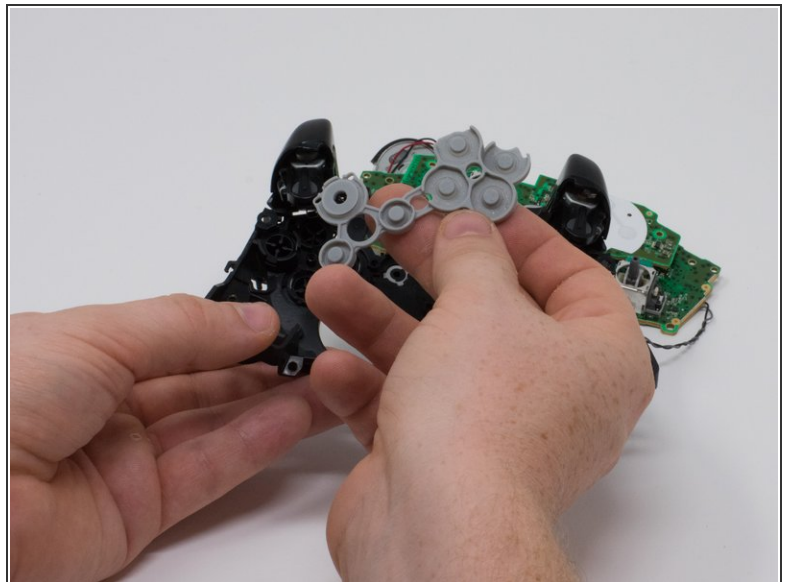
- Use a spudger to release the small hooks at each end of the left and right bumper.
- After you release these hooks, be careful as you separate the face plate from the back of the controller. The connect/sync button (see second image) is held in by this face plate and will come loose as you perform this step.

Step 14



- To avoid disconnecting the wires connected to the motherboard, lift the mother board away from the plastic frame as if opening a laptop.

Step 15 — Front Buttons



- Lift off the rubber backing strip.

i With the rubber backing strip removed, the buttons will now fall out of the remaining shell.

To reassemble your device, follow these instructions in reverse order.