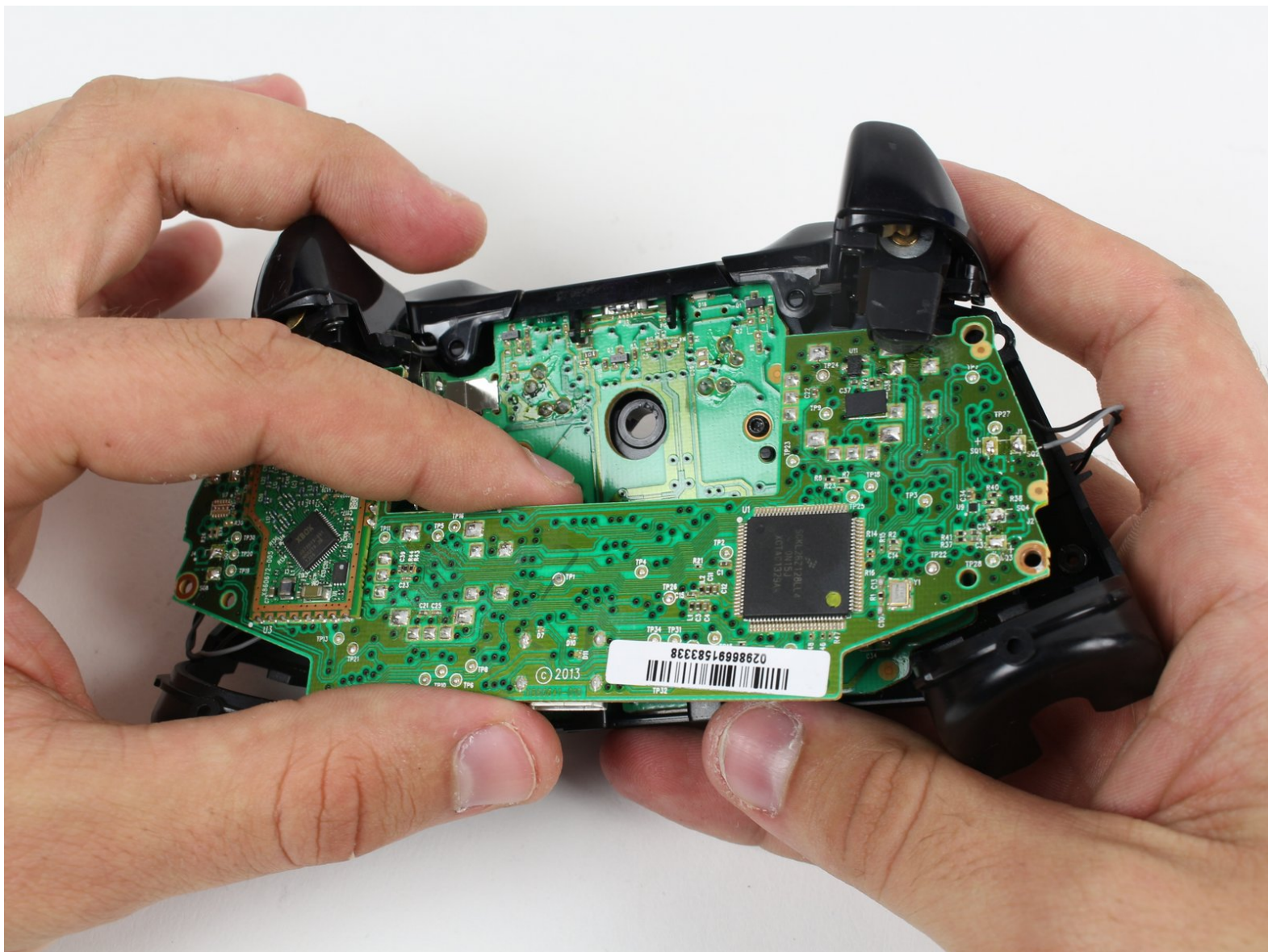




Xbox One Wireless Controller Top Motherboard Replacement

Remove the top motherboard for access to the triggers, bottom motherboard, and buttons.

Written By: Liam Gow



INTRODUCTION

Before you can access the inner components of the controller, you must remove the top motherboard. This guide will show you how to do this by de-soldering.

TOOLS:

- [T8 Torx Screwdriver](#) (1)
- [T6 Torx Screwdriver](#) (1)
- [Tweezers](#) (1)
- [Soldering Iron](#) (1)
- [Spudger](#) (1)

PARTS:

- [Xbox One Controller Joystick Control Board](#) (1)

Step 1 — Battery Pack



- Remove the battery pack cover.
- Remove batteries.

Step 2 — Side Handles



 We recommend using a nylon spudger for this step. A metal spudger is shown.

- Grip the controller firmly to remove the side handles, wedging a spudger into the seam between the front and handle plates.
- Pry the side plate away from the front plate by moving the spudger back and forth. You will need to do this all the way around the side plate's seam.

Step 3 — Screws



- i There is a hidden screw located in the middle of the controller behind the label.
- Use a screwdriver and punch a hole directly in the center of the label.
- i You may also lift the label if you do not want to puncture it.
- Remove the five 10mm screws located on the back of the controller using the T8 Security Torx Screwdriver.

Step 4 — Backplate



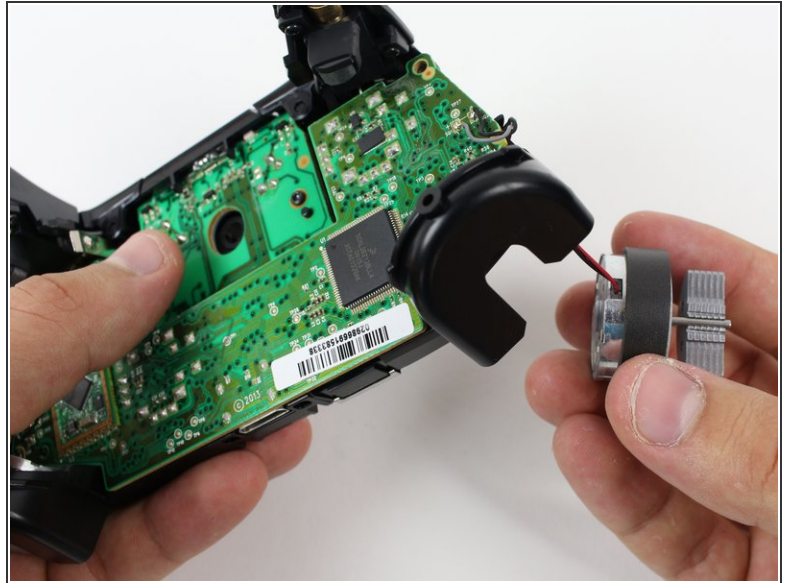
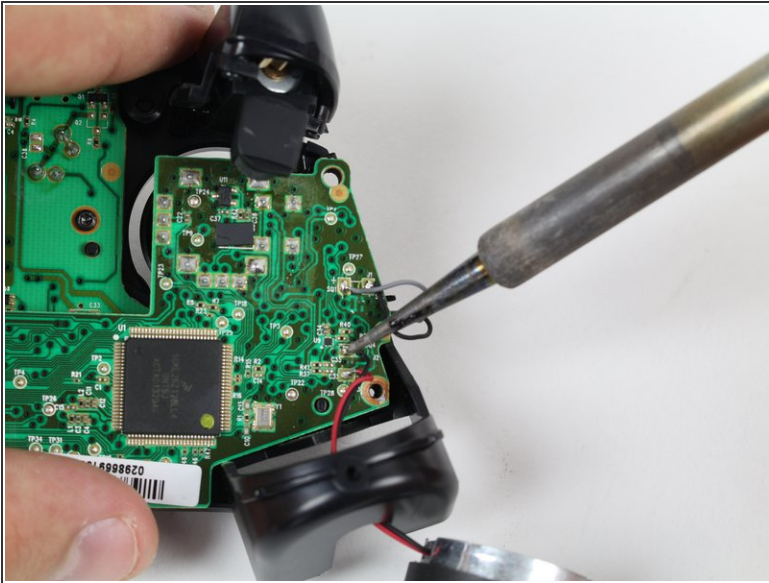
- Remove the backplate.

Step 5 — Faceplate




- Remove the faceplate.


Step 6 — Top Motherboard



 You may let the rumble motors hang freely out of their sockets.

- De-solder the soldered joints while holding the red and black wires down on the top motherboard.
- De-solder the black and gray wires that are attached to the top motherboard.
- Remove the rumble motors and set them aside.

 Be careful while using the soldering iron not to damage other components or hurt yourself.

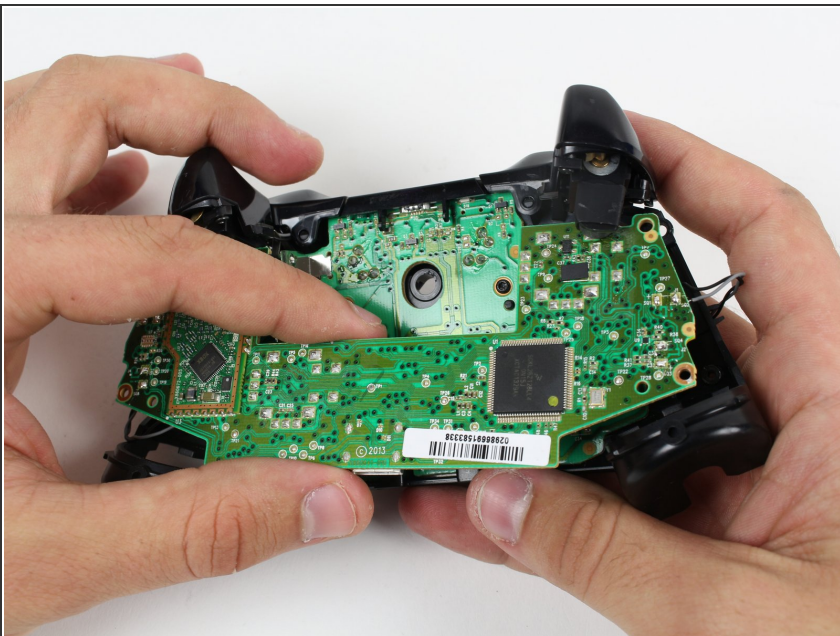
 For information on how to solder, [click here](#).

Step 7



- Unscrew the two 7mm T6 screws located near the rumble motor sockets.

Step 8



- Firmly grip sides of motherboard near the middle.
- Lift upwards while slightly wiggling the motherboard forward and backward.
- ⓘ Lifting the motherboard will require some force.

To reassemble your device, follow these instructions in reverse order.