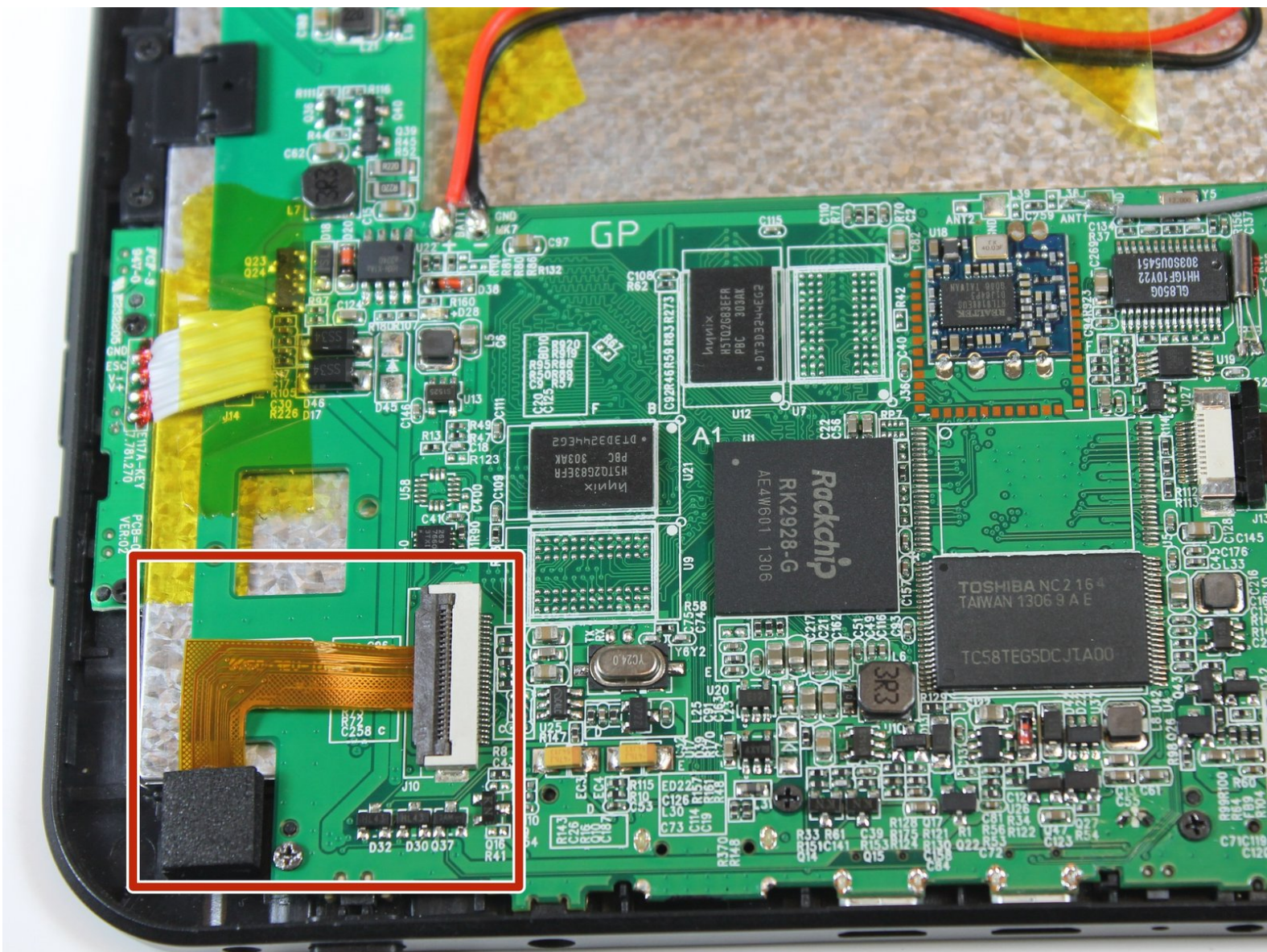




Xelio P1001A-BK Rear Camera Replacement

A simple guide to troubleshooting and replacing the rear camera on the Xelio tablet. The guide will address cleaning the camera or replacing it, if necessary.

Written By: Caleb



INTRODUCTION

The camera on this table is a simple device and has no moving parts. If the camera must be removed for servicing, the process to do so is fairly simple and does not involve de-soldering or soldering. Care must be taken, however, because the parts being handled are very small and made of plastic so are easy to break. Be patient, move slowly, do not apply large amounts of force when removing parts.



TOOLS:

- [Phillips head jeweler screwdriver](#) (1)
 - [Microfiber lens cleaning cloth](#) (1)
 - [Flat Needle Nose Pliers](#) (1)
 - [iFixit Opening Tools](#) (1)
-

Step 1 — Removing the Back Cover



- Locate screws at each corner on the side of the tablet

Step 2



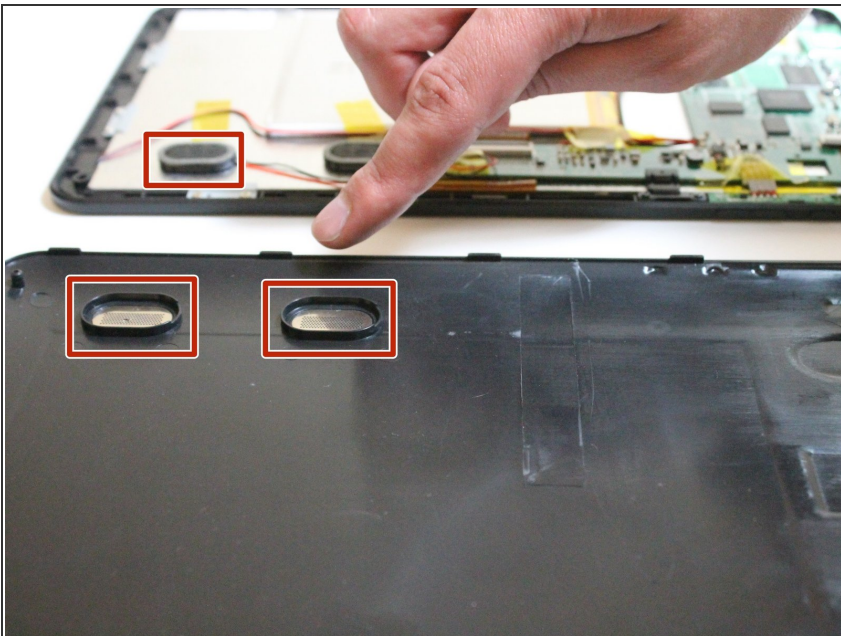
- With a Phillips #0 screwdriver, remove the two 3mm x 1mm retaining screws
- ⓘ Store the screws in a plastic bag or other appropriate container.

Step 3



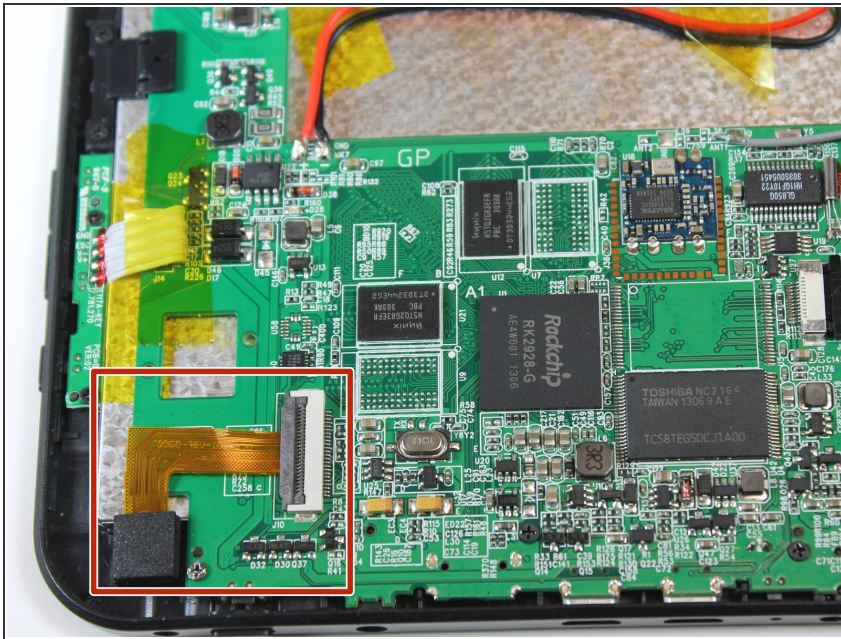
- Using the plastic opening tool, disengage the securing tabs that are along the two long sides of the tablet, four on each side.
- Slowly rotate up the side of the tablet opposite from the control buttons.

Step 4



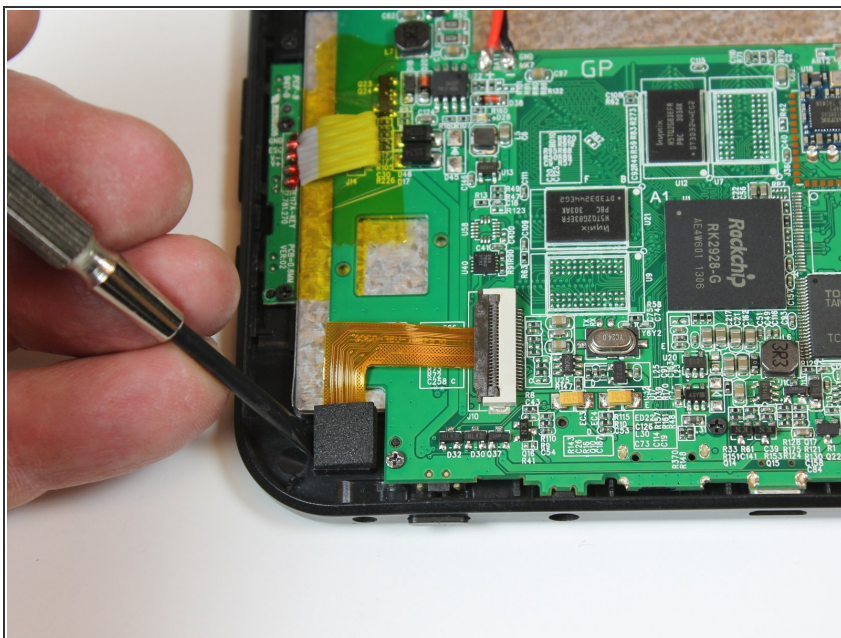
- ⚠ Before fully separating the shell halves, observe if the speakers are separated from the shell half
- If they are, the shell half can be fully separated from the front shell half
- If they are still in their sockets, gently pry them loose with the plastic opening tool.

Step 5 — Rear Camera



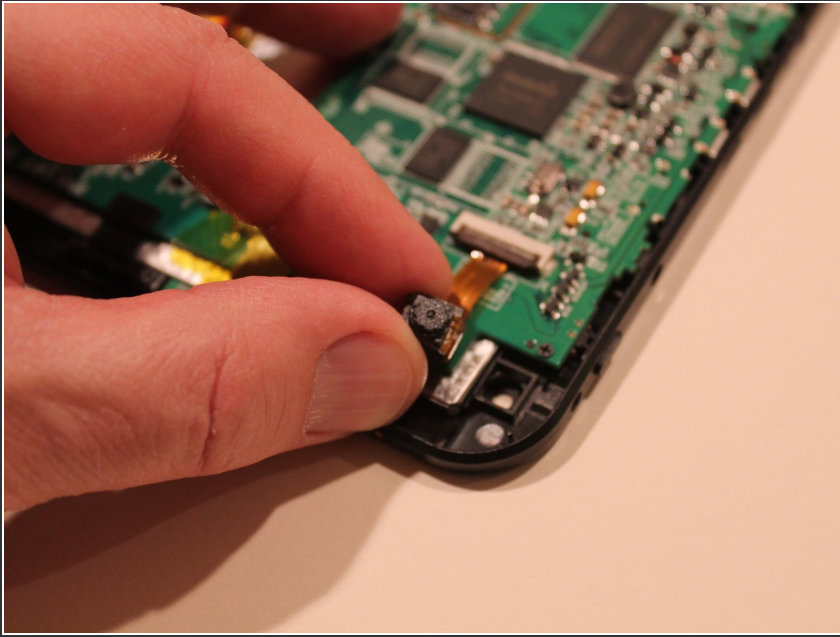
- Locate ribbon connector, make sure it is secure.

Step 6



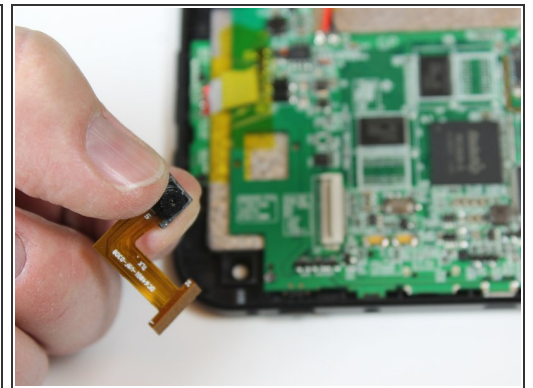
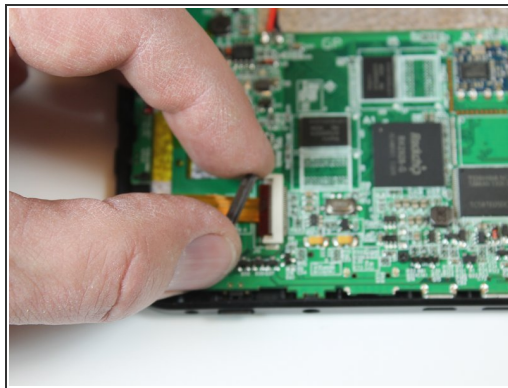
- With a plastic opening tool, gently pry the camera body from its retaining socket

Step 7



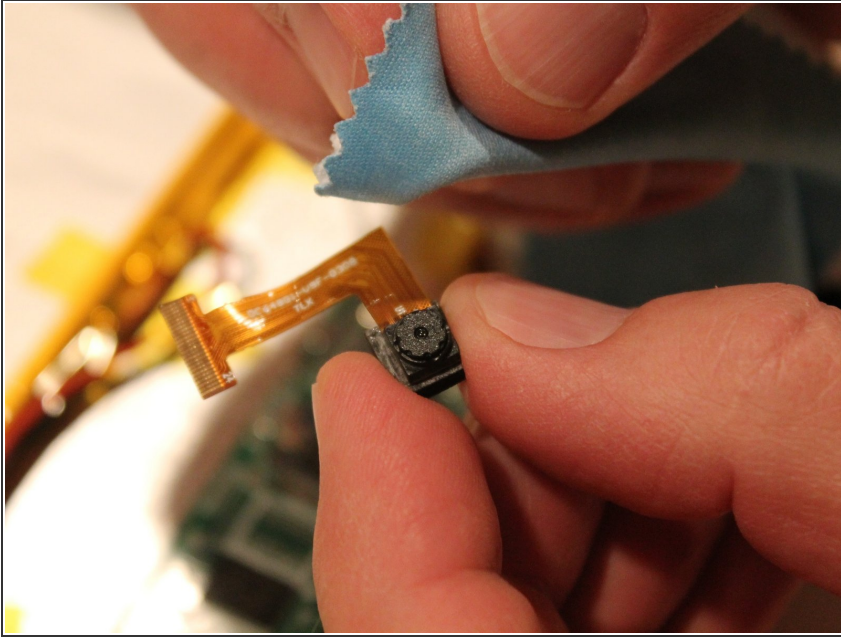
- Make sure the camera is unobstructed

Step 8



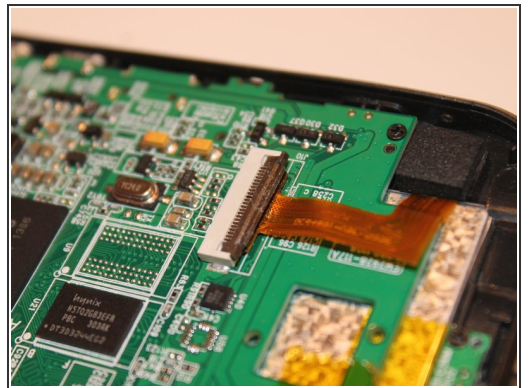
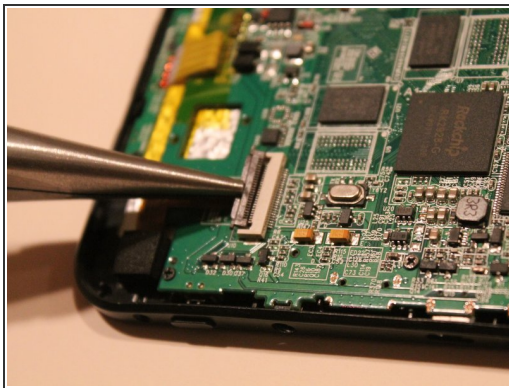
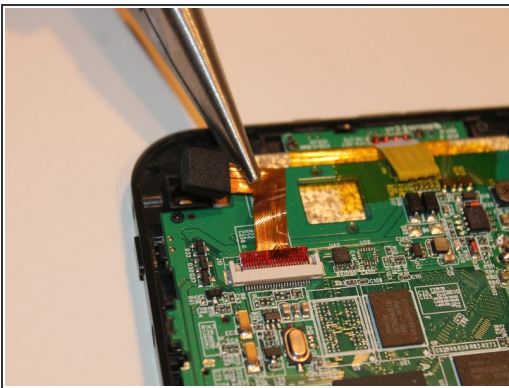
- If there is still no picture, remove the securing tab on the ribbon connector by inserting the plastic opening tool between the tab on the ribbon cable connector body.
- Slowly twist the opening tool to loosen the tab. Move the screwdriver to different parts of the tab to move it a little bit at a time.
- Once the tab is loose, remove it then slide the ribbon cable from its connector and remove the camera from the tablet

Step 9



- With a microfiber lens cleaning cloth, clean the camera lens

Step 10



- To install a new camera, slide the ribbon cable back into its connector
- Reinstall the ribbon cable securing tab
- ⓘ Note the indentation that goes along the edge of the securing tab. It must be facing up to orient the tab correctly
- Install the camera in its retaining socket

To reassemble your device, follow these instructions in reverse order.