



# Xelio P900A-BK Screen Replacement

Sat on your tablet and now it has this nasty crack.

Written By: Marcus Nelson



---

# INTRODUCTION

Teaching you how to replace a crack screen.



## TOOLS:

- [5mm Nut Driver](#) (1)
  - [iFixit Opening Tools](#) (1)
  - [Spudger](#) (1)
  - [Magnetic Project Mat](#) (1)
-

## Step 1 — Screen



- Remove the two bottom screws.
- The two bottom screws have a 2.44mm wide tops and are 5.44mm.

## Step 2



- Slide the spudger between the screen's rolled edge and the back of the tablet and pry apart carefully. Expect the tablet screen to make a cracking sound.
- Slide the spudger in the slit all the way around the perimeter of the tablet to fully separate the screen.

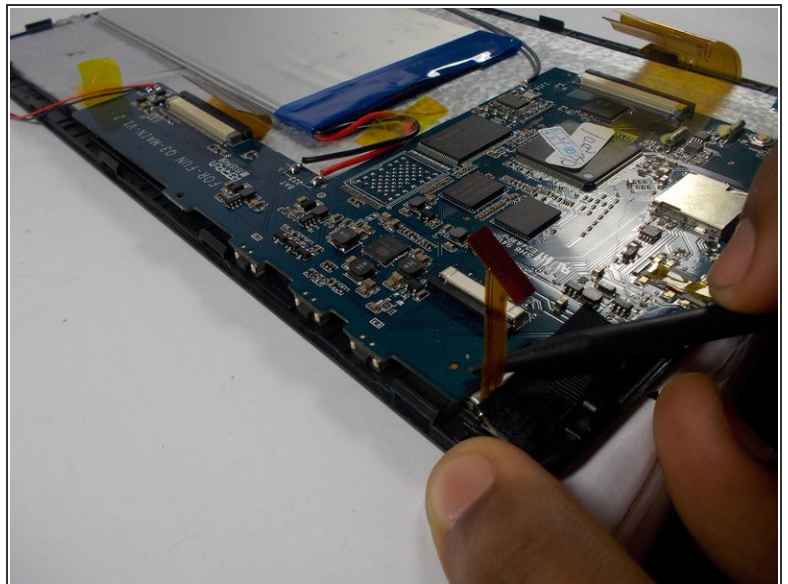
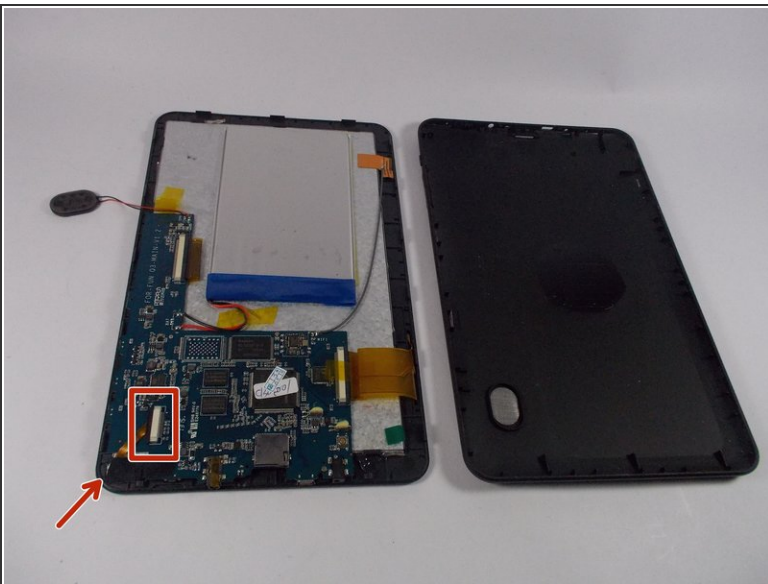


### Step 3



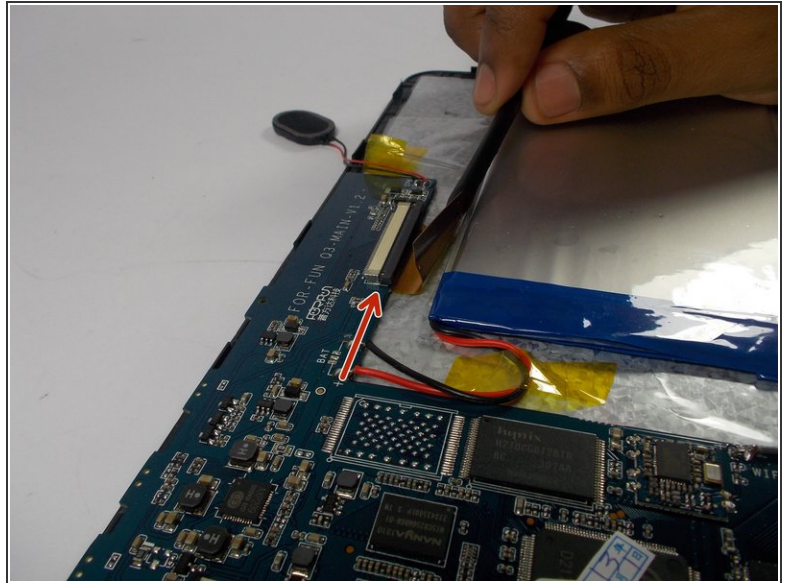
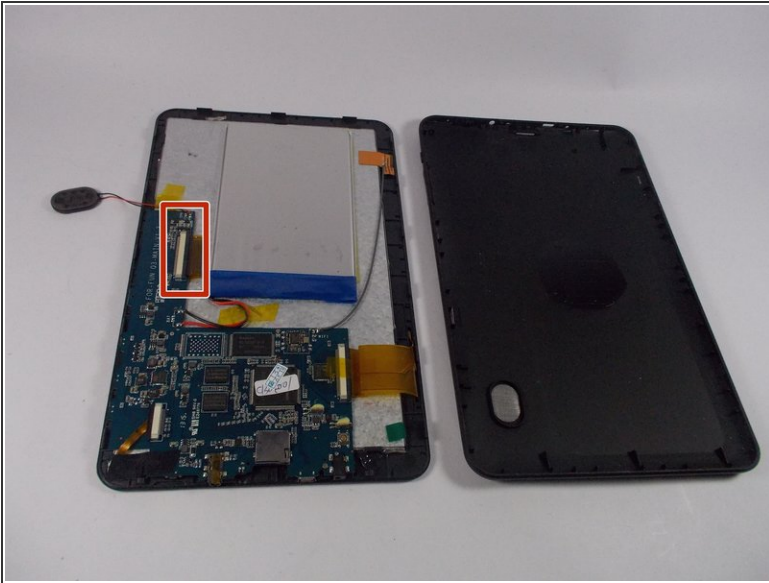
- Once the screen has fully separated from the back of the tablet, gently lift up the edges to remove the screen.

### Step 4



- Next, disconnect the front facing camera ribbon (shown). The ribbon is held to the motherboard by a small bar.
- Using the spudger to pry open the bar, pull the ribbon out to disconnect it.

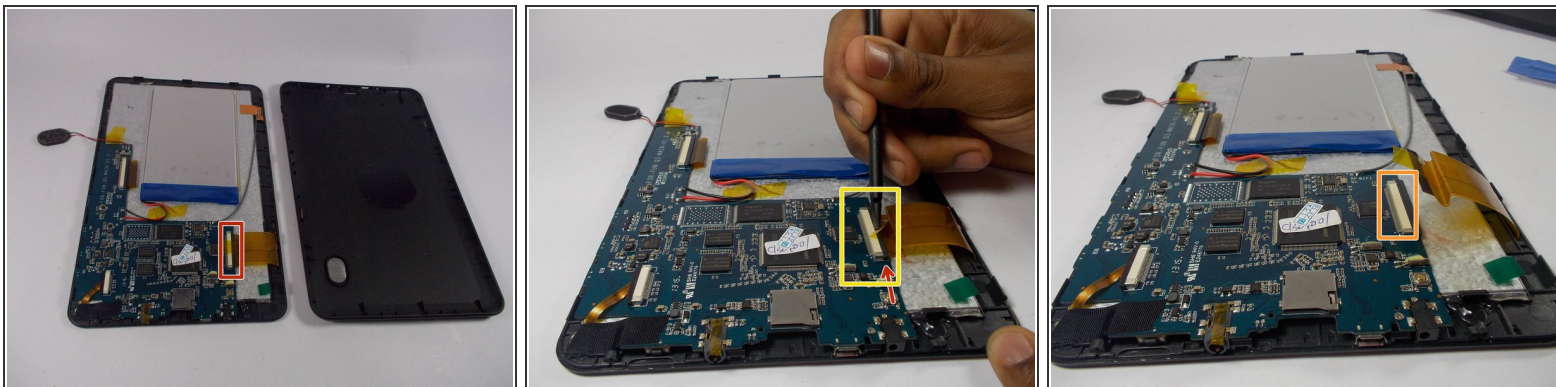
## Step 5



- Next, work on disconnecting the ribbon for the touch screen.
  - The touch screen ribbon is larger than the camera ribbon and is located on the left side of motherboard.
- Using the spudger, gently pry the ribbon out from under the bar. Pull the ribbon and disconnect it from the motherboard.

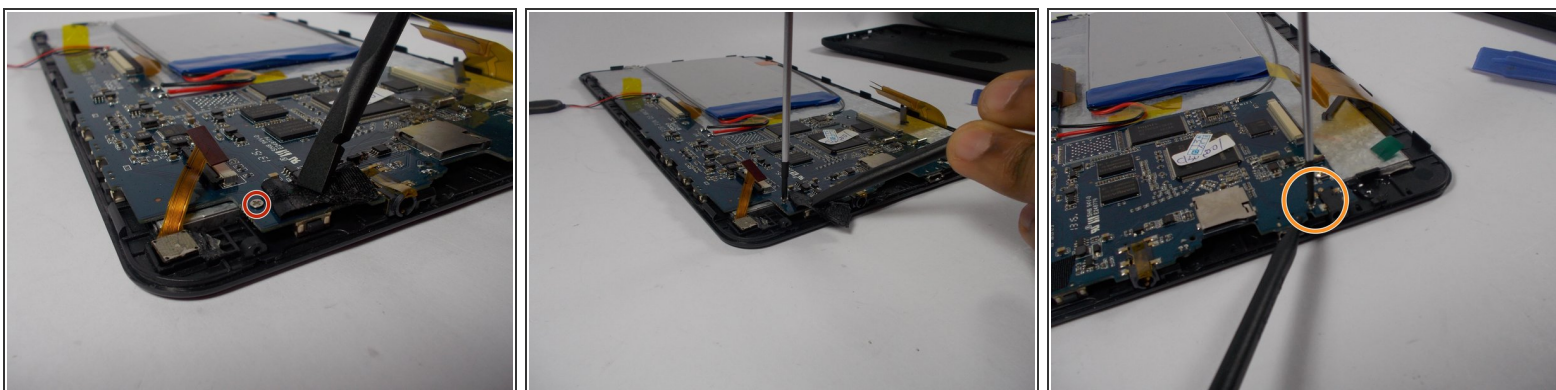


## Step 6



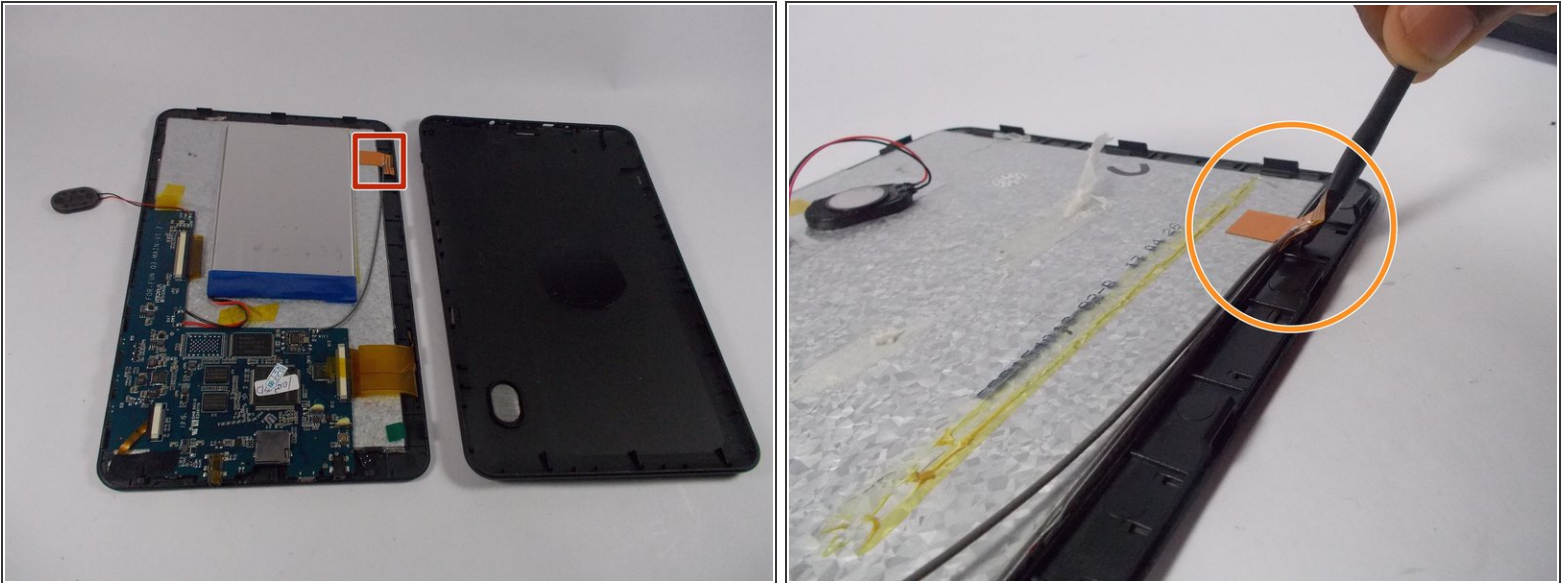
- Next, work to disconnect the LCD screen ribbon.
- This ribbon is located on the right side of the motherboard.
- The ribbon is connected to the motherboard by a small bar. Using the spudger, pry the bar apart and slide the ribbon out.

## Step 7



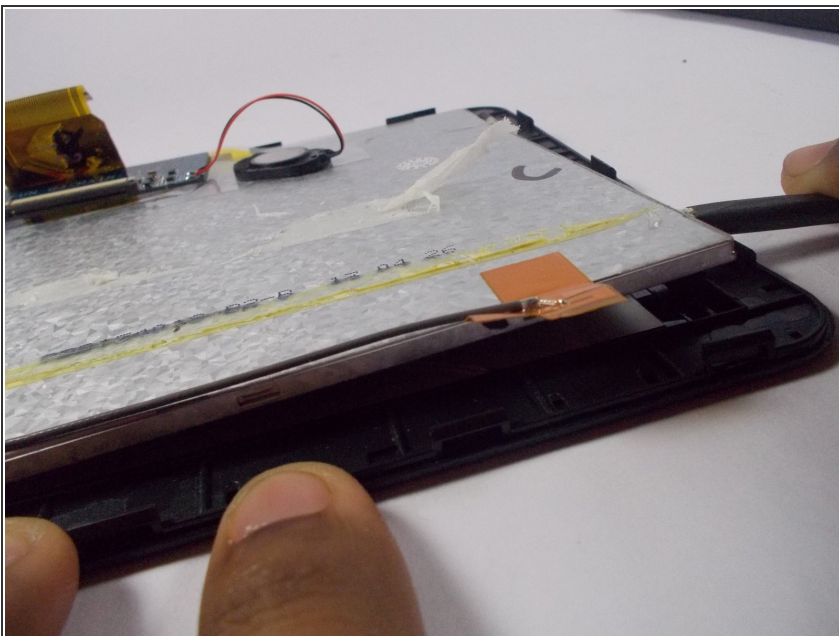
- Remove the two motherboard screws.
- To remove the first screw, expose the black strip. Then using a Philips head screwdriver, remove the first screw.
- Locate the second screw by looking to the bottom right of the motherboard. Remove the second screw with the Philips head screwdriver.

## Step 8



- Locate the last connection to the LCD in the top right section of the tablet.
- The last connection is a ribbon connected to green wire, which is held down by tape.
- Disconnect the ribbon by removing the tape connecting it to the plastic frame of the tablet.

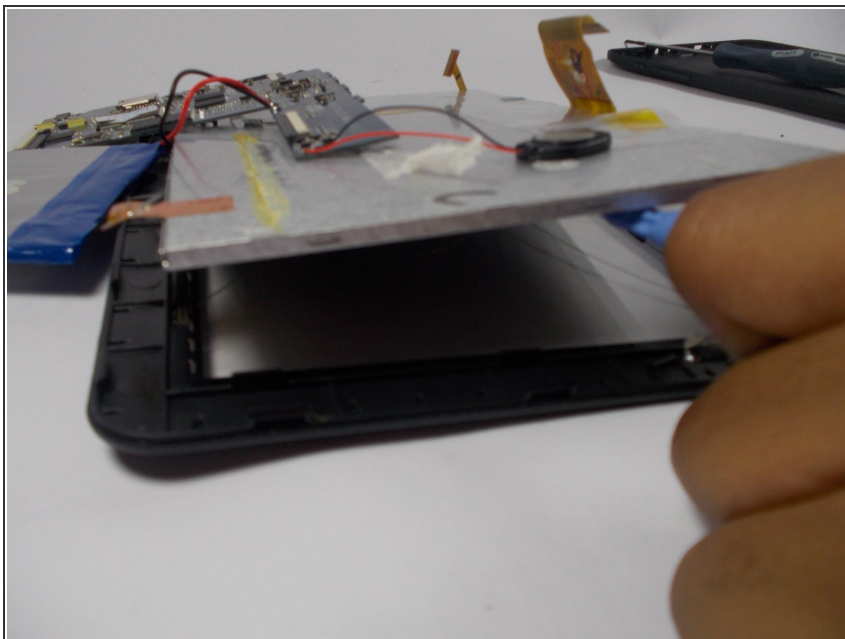
## Step 9



- With the spudger, pry the LCD screen from the plastic screen holder.
- Use gentle, but firm force to pry the LCD away from the holder.

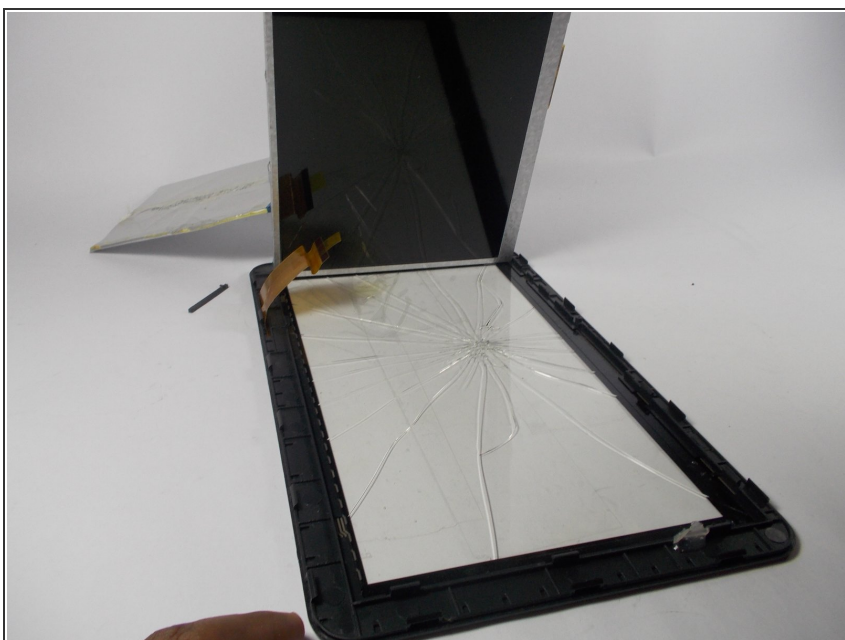


## Step 10



- Work the spudger all the way around until the LCD is free from the screen holder.

## Step 11



- Finally, lift the LCD off, removing it from the screen holder and the motherboard.

To reassemble your device, follow these instructions in reverse order.