



Xiaomi Mi A2 Battery Replacement

This guide will exhibit step by step how to replace the battery on the Xiaomi Mi A2.

Written By: Julian Sanchez



INTRODUCTION

The battery is the component that powers all the other aspects of your Xiaomi Mi A2 (Model M1804D2SG). The use and charging cycle of a battery can cause it to degrade in its charging capacity and over time your phone may not hold a charge as much as it used to. If your Xiaomi Mi A2 is not turning on make sure to follow the steps outlined in [this troubleshooting guide](#) before resorting to a replacement.

If your battery is swollen, [take appropriate precautions](#). Do not heat your phone. If needed, you can use a dropper or syringe to inject isopropyl alcohol (90+%) around the edges of the back cover to weaken the adhesive. Swollen batteries can be very dangerous, so wear eye protection and exercise due caution, or take it to a professional if you're not sure how to proceed.

For optimal performance, [calibrate your newly installed battery](#): Charge it to 100% and keep charging it for at least 2 more hours. Then use your device until it shuts off due to low battery. Finally, charge it uninterrupted to 100%.



TOOLS:

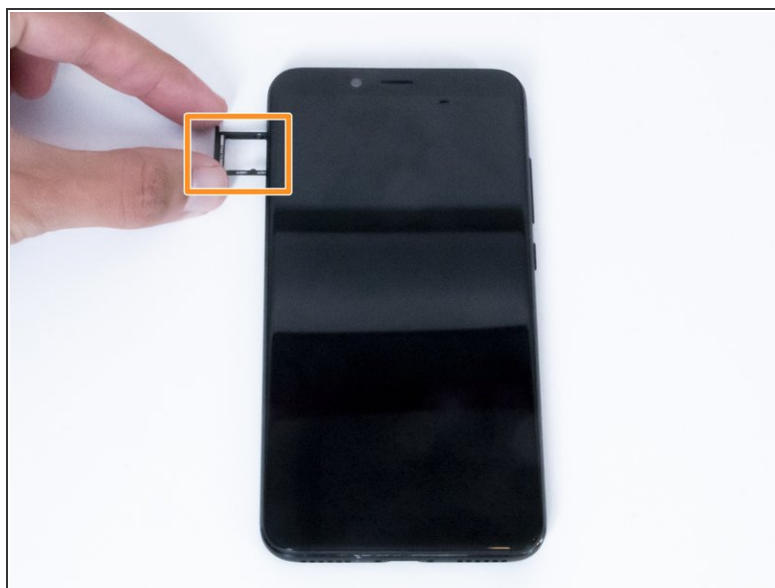
- [Suction Handle](#) (1)
- [Spudger](#) (1)
- [1 x Opening Picks](#) (1)
- [iFixit Opening Tools](#) (1)
- [Phillips #0 Screwdriver](#) (1)
- [P2 Pentalobe Screwdriver iPhone](#) (1)



PARTS:

- [Xiaomi Mi A2 Battery](#) (1)

Step 1 — Screen



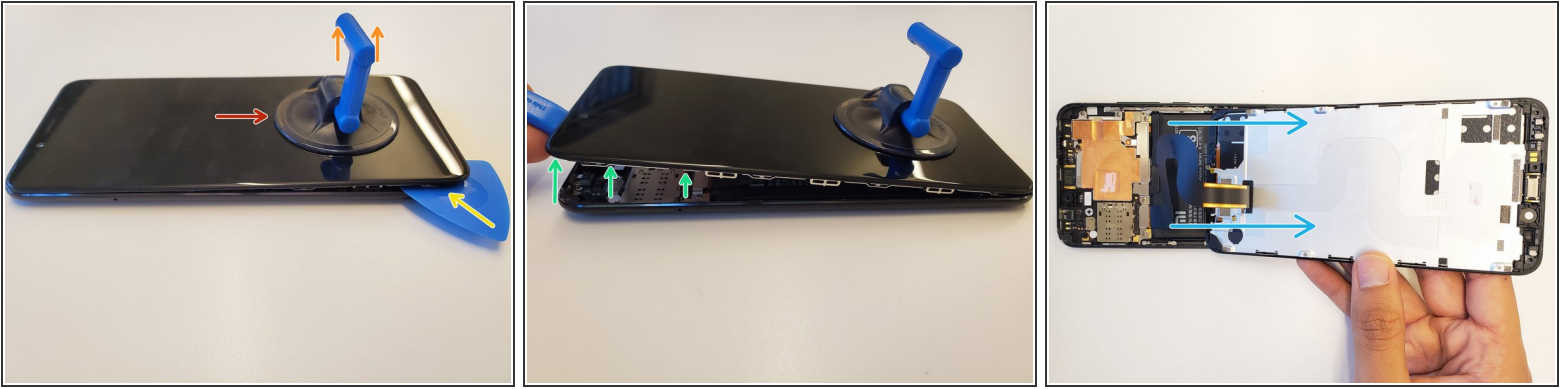
- Turn off your phone before proceeding.
- Remove SIM card tray from phone.
- ☑ Touch something metallic to ensure you are electrostatic safe.

Step 2



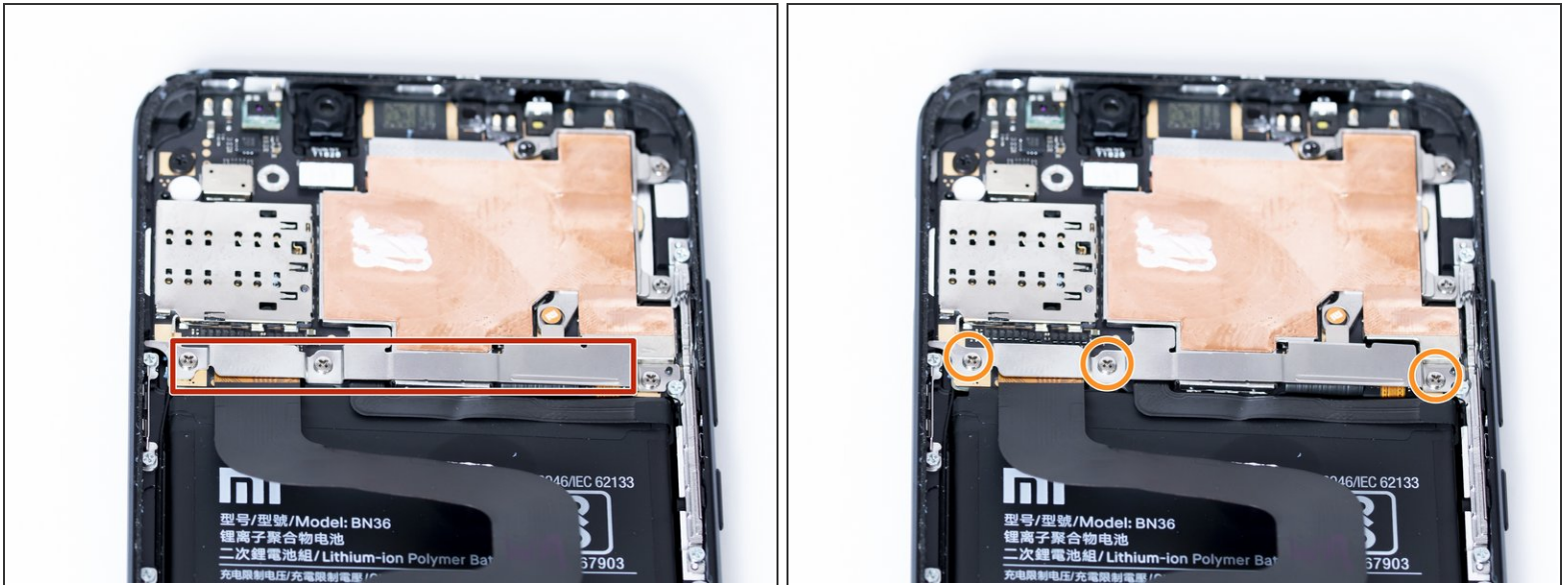
- Remove the two 2.7mm Pentalobe #2 screws from the bottom of the phone.


Step 3



- Grab a suction cup tool and place it near the bottom of the phone.
 - Pull up on the suction cup to slightly lift the LCD Panel from the body of the phone.
 - Starting from the bottom, slide in a plastic opening tool between the gap of the LCD and the phone.
 - Using a combination of the plastic opening tool and picks, slide around the gaps to unhook the clips, unhinging the panel from the body of the phone.
 - Flip the phone screen towards the bottom of the device and lay the screen facing down.
- i** Note: The ribbon cable is in the middle of the panel, thus there is no need to be cautious about snagging a ribbon cable

Step 4



 When removing the ribbon cable and installing the new one take special care to not bend or fold the cable too much as this can cause damage to the cable itself.

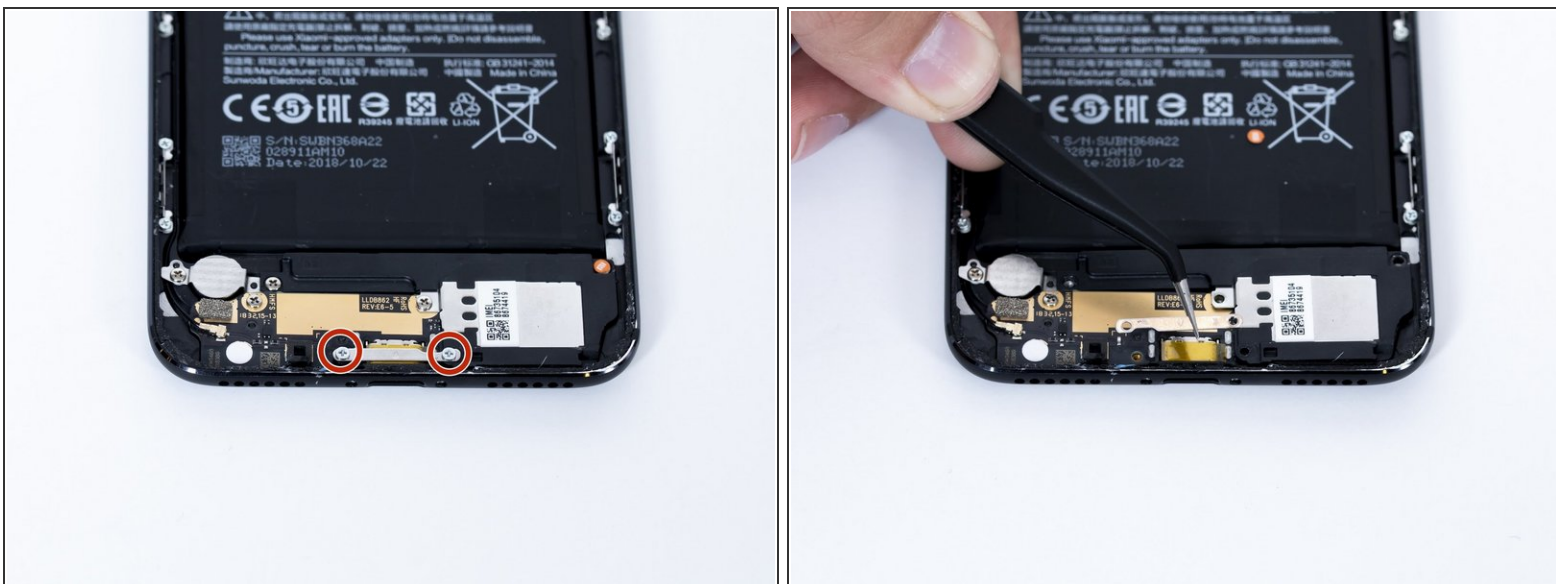
- To access the ribbon cable connectors we must remove the metal bracket.
- Remove the three 2.4mm Philips #0 screws that hold the panel down.

Step 5



- Using a plastic spudger remove the battery connector ribbon cable by getting underneath the connector and gently lifting it off.
- Using a plastic sudger remove the screen connector ribbon cable by lifting from the underneath.
- After you remove the ribbon cable the panel should be free to remove and replace.

Step 6 — USB Port



- Remove the two 3.8mm Phillips #0 screws holding down the lower metal bracket.

Step 7



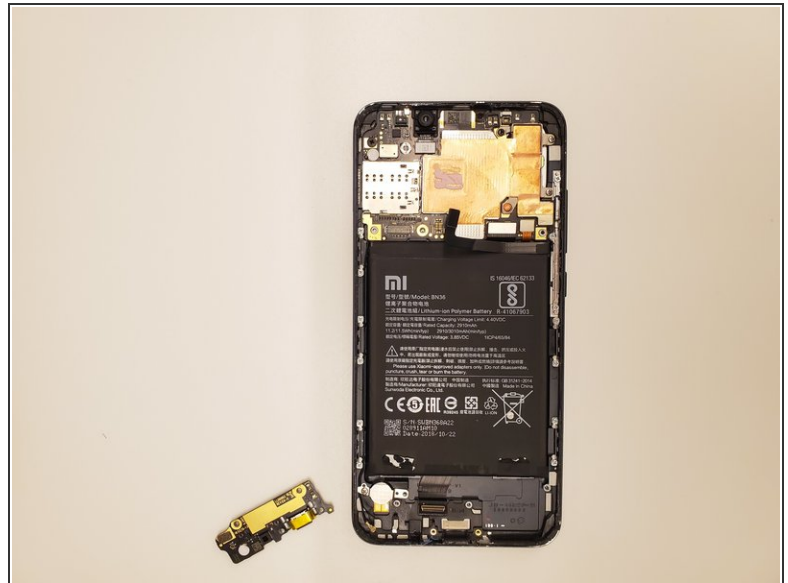
- Remove the loud speaker. There are three 2.4mm Phillips #0 screws you need to remove, and one (upper right) is underneath the Xiaomi water sticker.

Step 8



- Unplug the antenna wire with a spudger tool.
- Remove another 2.4mm Phillips #0 screw near vibration motor.

Step 9



- i The ribbon cable connector is located underneath the sub-board. To access the connector flip the board over towards the battery.
- Use a spudger tool to remove the cable from the connector.
- i The USB Connector board can now be removed from the device and replaced.

Step 10 — Battery



- On the bottom of the battery are two pull tabs. They are glued on to the battery similarly like a sticker.
- To remove the battery pull these pull tabs downwards. **WARNING:** proceed with extreme caution, avoid bending or puncturing the battery.
- You can use tweezers to lift the pull tabs from the battery. Pull downwards and the adhesive will slowly be removed from the battery.

Step 11



- Gently remove battery from its housing.
- ① Component can now be replaced.

To reassemble your device, follow these instructions in reverse order.