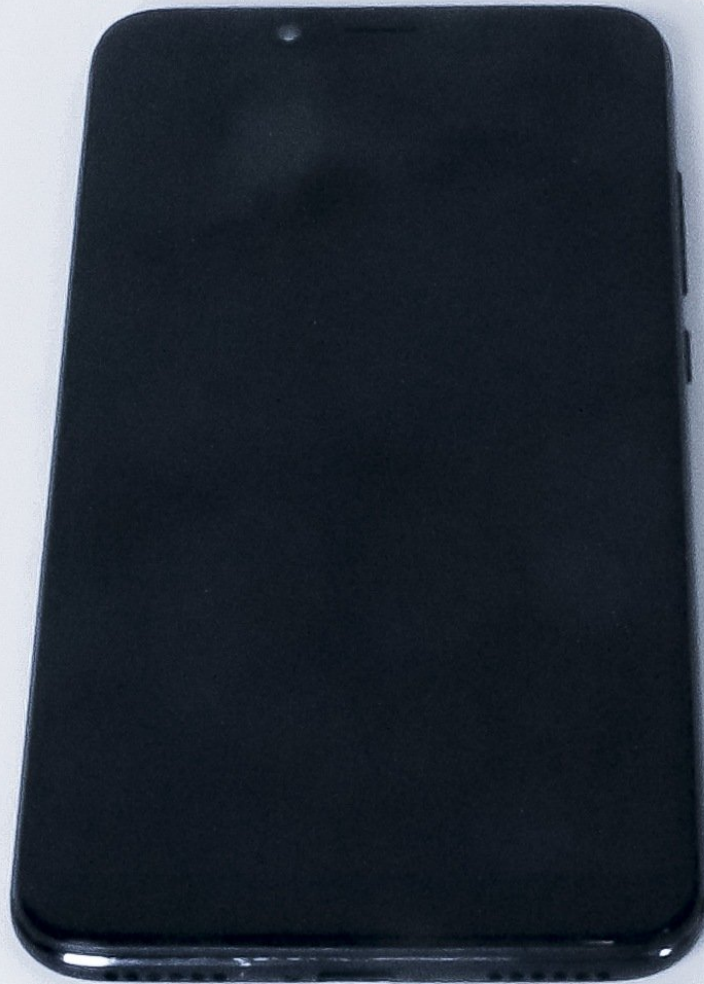




Xiaomi Mi A2 Screen Replacement

Use this guide to replace the screen in your Xiaomi Mi A2.

Written By: Victor Sanchez Gutierrez



INTRODUCTION

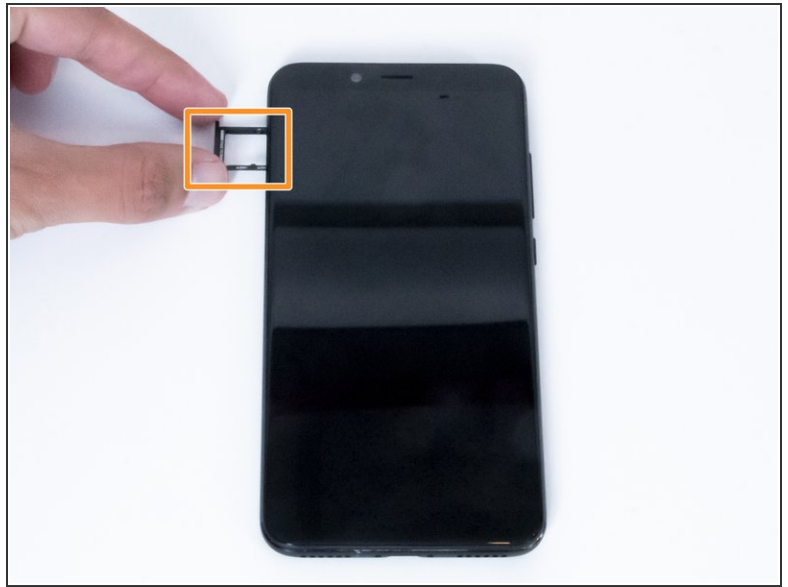
The screen is the output component to present information and is made up of the glass panel, digitizer, and LCD display sandwiched together. If you are experiencing screen issues such as cracked glass, glitchy graphics, colored lines across the panel or unresponsive touch on your Xiaomi Mi A2 (Model M1804D2SG), use this guide to replace the LCD panel (The screen). Before you begin with this guide for a panel that won't turn on make sure you have checked all possible issues for why a phone won't output anything, outlined in [this guide](#). If your display is shattered, follow [this guide](#) to reinforce your screen to avoid injury until you replace the display.

The replacement part comes with the earpiece speaker and LCD shield plate already installed, making for an easier repair. Before beginning, make sure to power off your phone completely and disconnect from any external power source.

TOOLS:

- [Suction Handle](#) (1)
 - [Spudger](#) (1)
 - [1 x Opening Picks](#) (1)
 - [iFixit Opening Tools](#) (1)
 - [Phillips #0 Screwdriver](#) (1)
 - [P2 Pentalobe Screwdriver iPhone](#) (1)
-

Step 1 — Screen



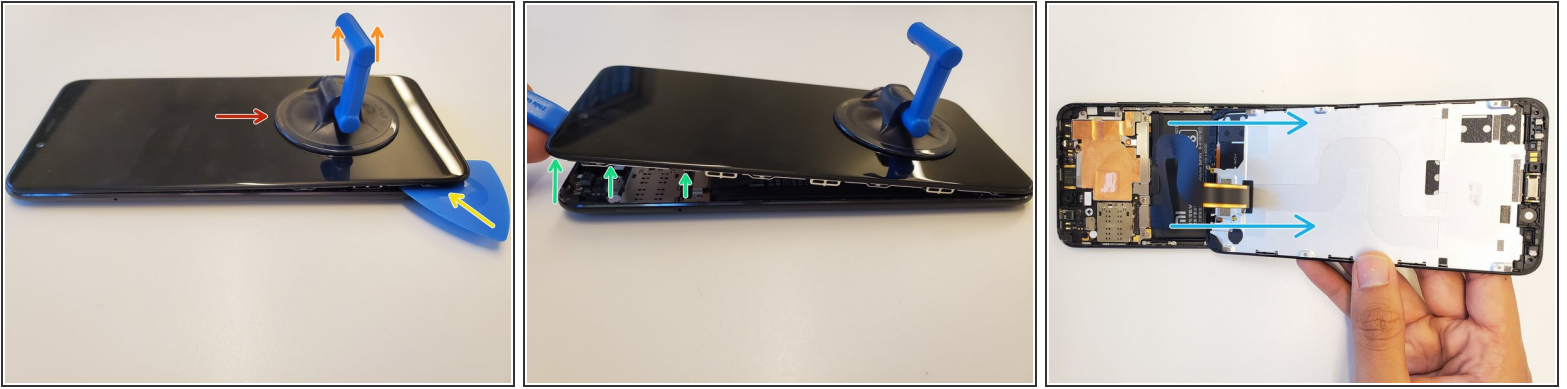
- Turn off your phone before proceeding.
- Remove SIM card tray from phone.
- ☑ Touch something metallic to ensure you are electrostatic safe.

Step 2



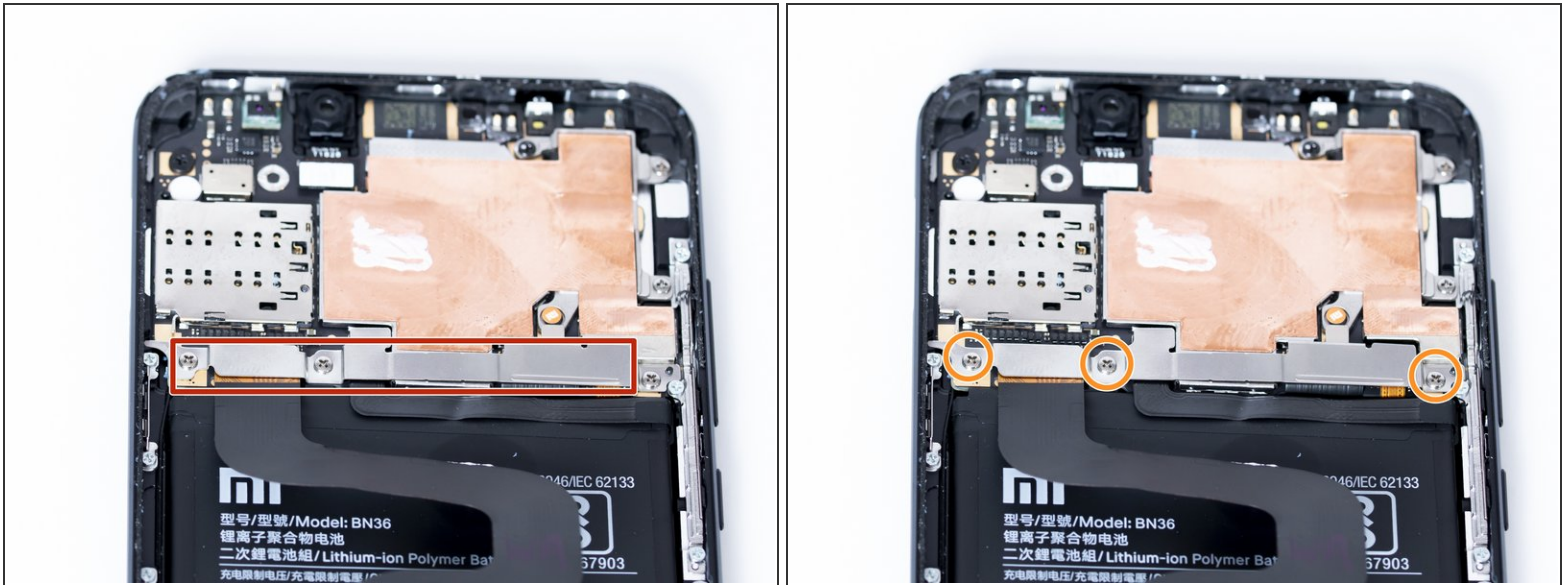
- Remove the two 2.7mm Pentalobe #2 screws from the bottom of the phone.


Step 3



- Grab a suction cup tool and place it near the bottom of the phone.
 - Pull up on the suction cup to slightly lift the LCD Panel from the body of the phone.
 - Starting from the bottom, slide in a plastic opening tool between the gap of the LCD and the phone.
 - Using a combination of the plastic opening tool and picks, slide around the gaps to unhook the clips, unhinging the panel from the body of the phone.
 - Flip the phone screen towards the bottom of the device and lay the screen facing down.
- i** Note: The ribbon cable is in the middle of the panel, thus there is no need to be cautious about snagging a ribbon cable

Step 4



 When removing the ribbon cable and installing the new one take special care to not bend or fold the cable too much as this can cause damage to the cable itself.

- To access the ribbon cable connectors we must remove the metal bracket.
- Remove the three 2.4mm Philips #0 screws that hold the panel down.

Step 5



- Using a plastic spudger remove the battery connector ribbon cable by getting underneath the connector and gently lifting it off.
- Using a plastic sudger remove the screen connector ribbon cable by lifting from the underneath.
- After you remove the ribbon cable the panel should be free to remove and replace.

To reassemble your device, follow these instructions in reverse order.