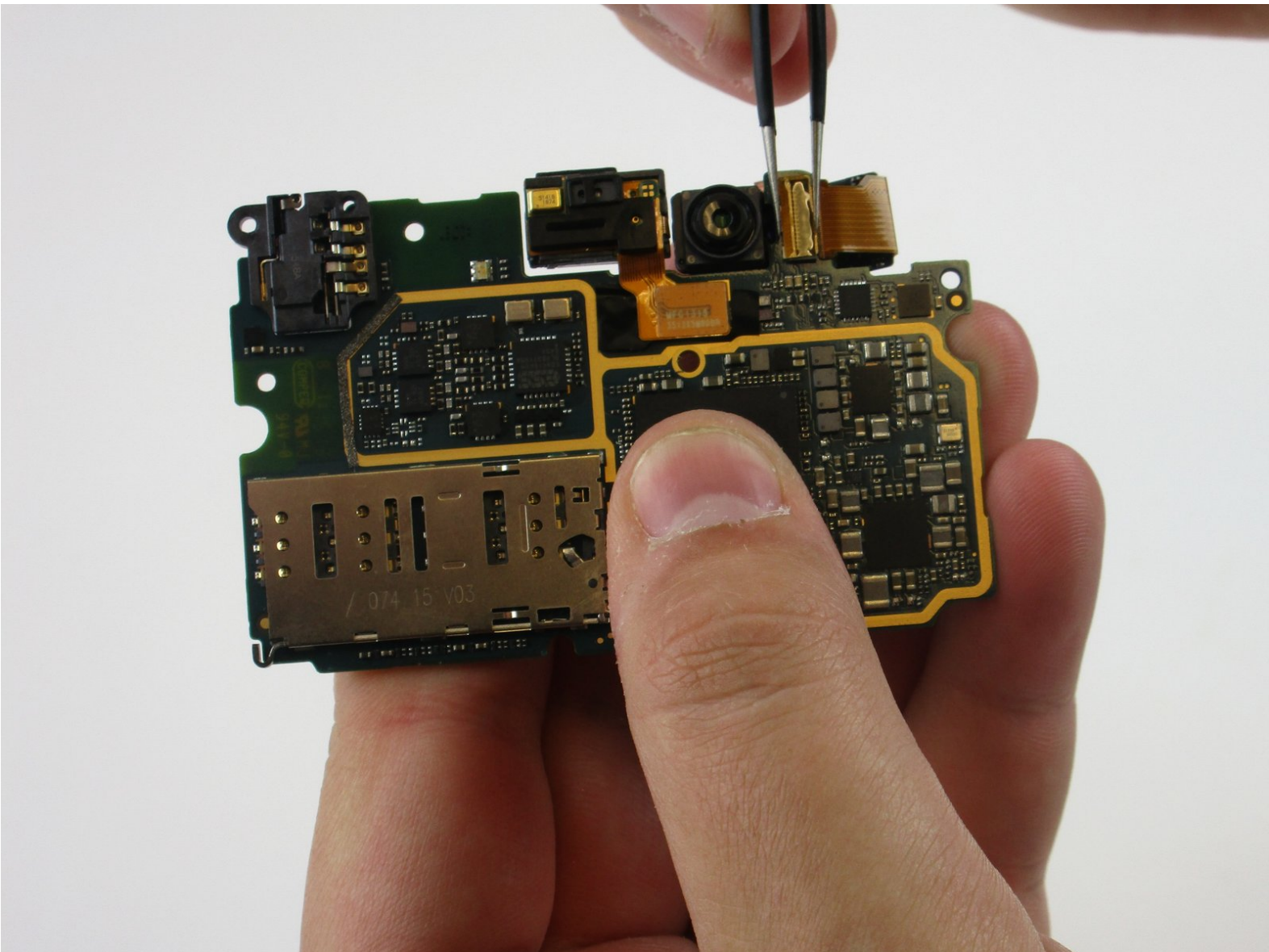




Xiaomi Mi Note Rear camera Replacement

This guide will show you how to properly remove and replace your rear camera.

Written By: Abdulaziz Aldekheel



INTRODUCTION

Use this guide to replace your Xiaomi Mi Note's rear facing camera.

TOOLS:

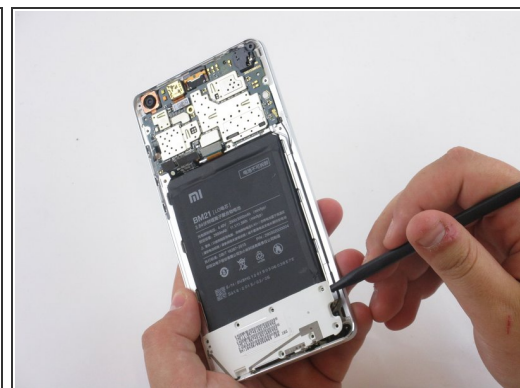
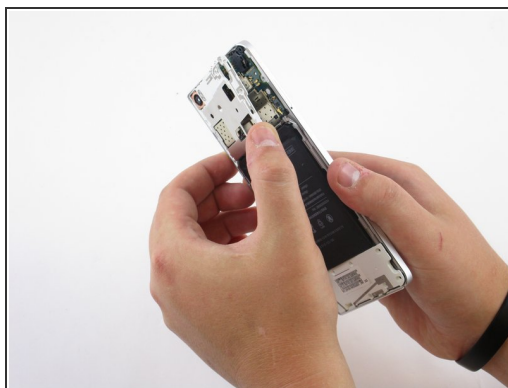
- [Tweezers](#) (1)
 - [Metal Spudger](#) (1)
 - [Phillips #000 Screwdriver](#) (1)
 - [Suction Handle](#) (1)
 - [Spudger](#) (1)
-

Step 1 — Battery



- Use your suction cup to grip the back of the phone. Once the suction cup is secure, pull back with moderate force and the back plate should snap free.

Step 2



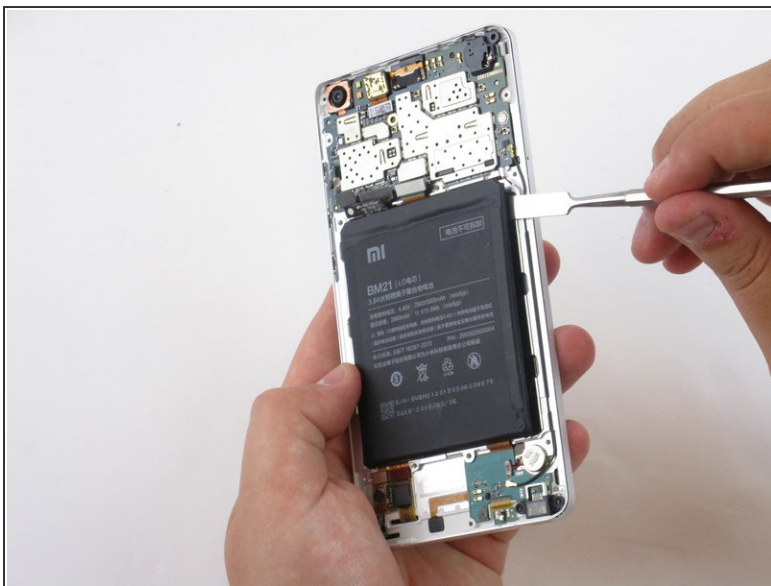
- Once the back plate is off you will need to detach the frames that hold in the battery. Locate and remove the screws (Screws are marked in the image). You can then pull the frame off with ease once the screws have been removed.
- Remove the six 3.5mm Phillips #000 black screws using a securing part of the back panels.
- Remove the seven 2.5mm Phillips #000 black screws securing part of the back panels.
- Remove the five 2mm Phillips #000 silver screws securing the remaining back panels.

Step 3



- Use a nylon spudger to pry upwards to detach the ribbon that's connecting the battery to the motherboard.

Step 4



- Insert a nylon or metal spudger underneath the battery at any point. Then slide the spudger around all the edges to loosen it. The battery can now be easily lifted out of the frame.

 Glue will be holding down the backside of the battery.

Step 5 — Rear camera



- Use a plastic spudger to detach the remaining ribbon from the motherboard.

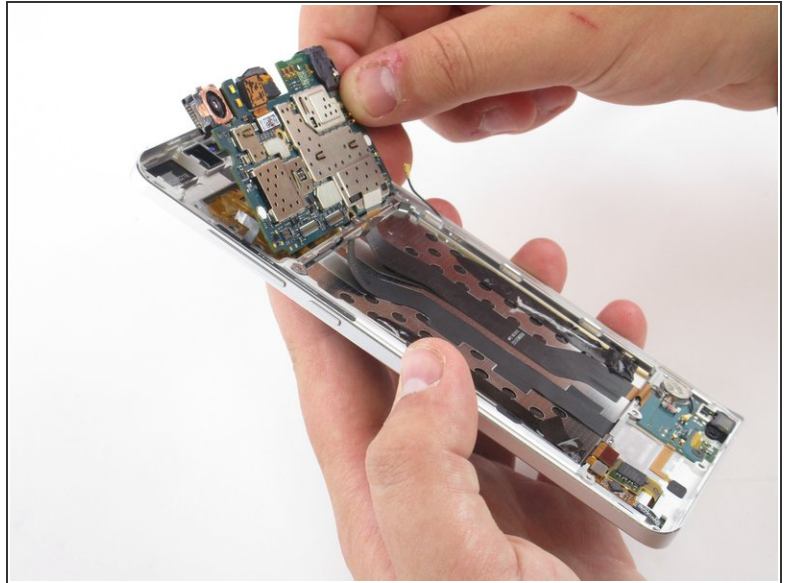
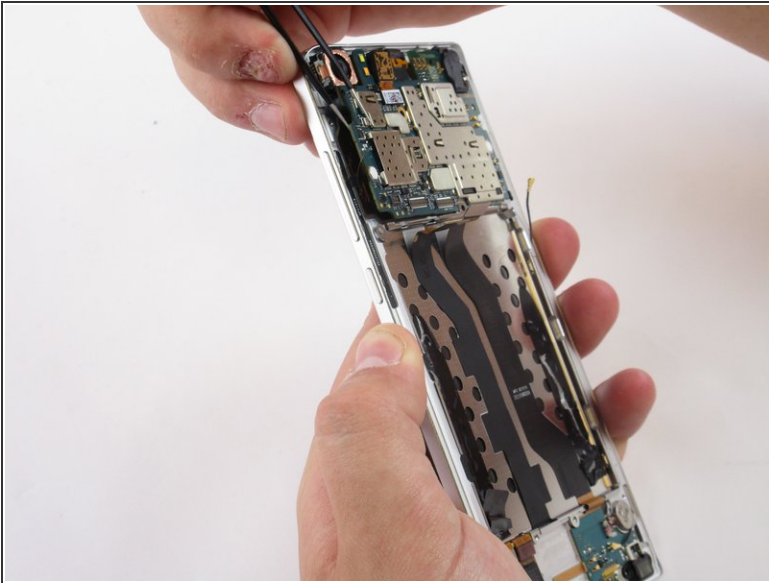
Step 6



- Use tweezers to detach the small ribbon on the left side located near the volume buttons as well as the microphone cord located on the right side along the frame.

 When detaching the ribbon on the left use minimal force to prevent damage.

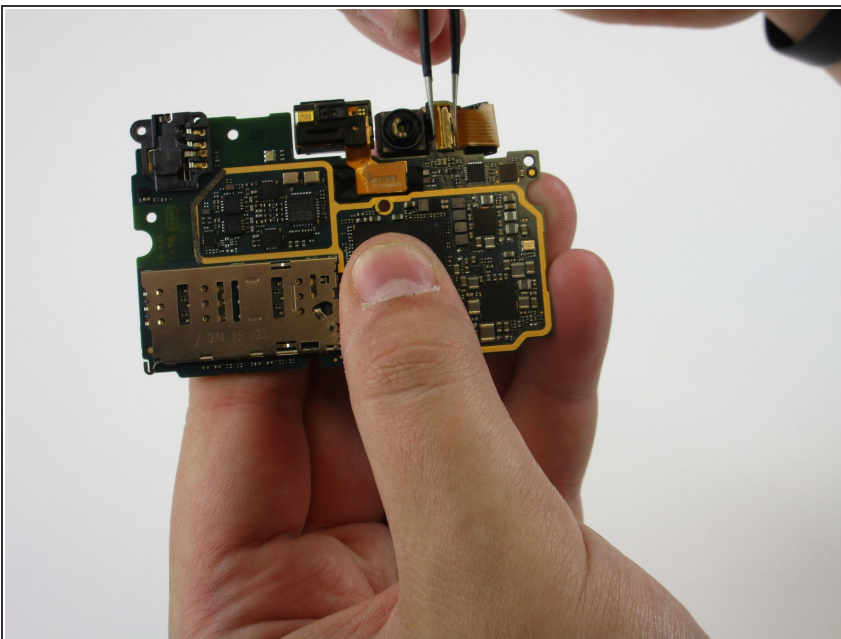
Step 7



- Use a tweezer to lift and remove the motherboard from the frame.

☑ Be sure that the Dual SIM card and tray has been removed.

Step 8



- Use tweezers to slide the ribbon to the right out of the insert as shown in the image.

To reassemble your device, follow these instructions in reverse order.