



# Xiaomi Redmi 2 Screen Assembly Replacement

Replace the screen assembly of a Xiaomi Redmi 2.

Written By: Alicia Brenner



## INTRODUCTION

Use this guide to remove the screen assembly of your Xiaomi Redmi 2 for repair or replacement of any parts attached.



### TOOLS:

- [Phillips #000 Screwdriver](#) (1)
  - [Spudger](#) (1)
  - [Tweezers](#) (1)
-

## Step 1 — Motherboard



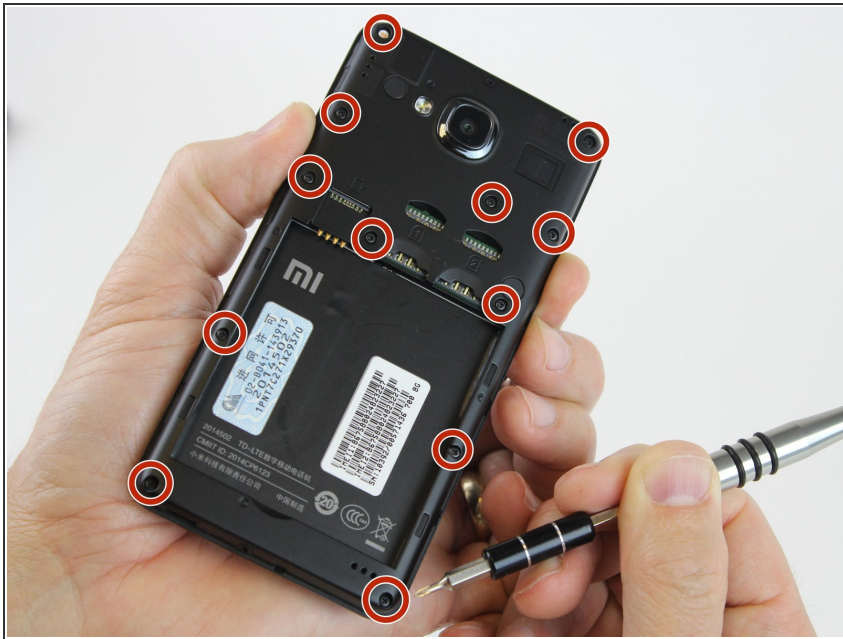
- Use the flat end of the spudger to remove the back panel from the mid-frame and front body.

## Step 2



- Insert your finger into the curved opening of the mid-frame.
- Lift the battery and remove.

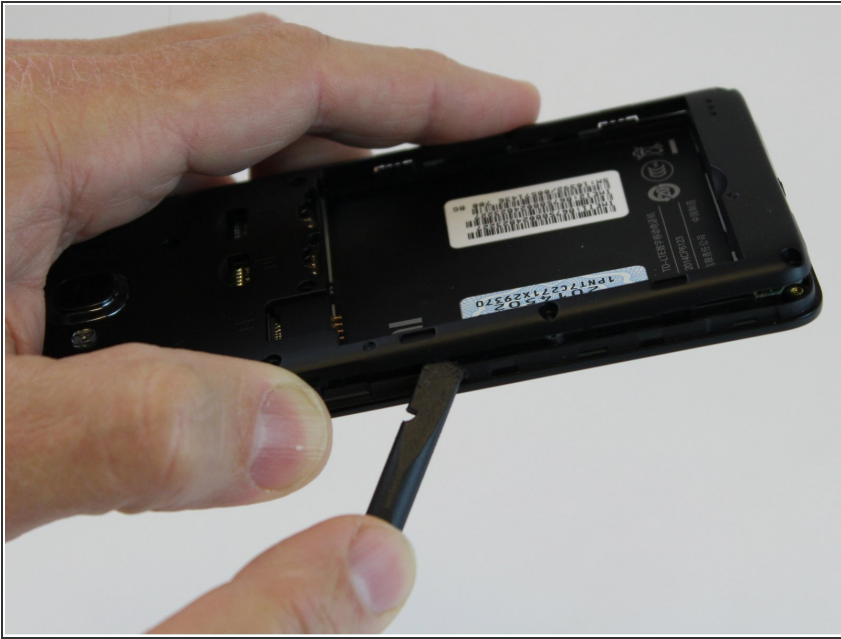
## Step 3



- ❗ Remove the SIM and/or memory cards if present.
- Remove twelve 3.4 mm Phillips #000 screws securing the mid-frame to the front body.



## Step 4



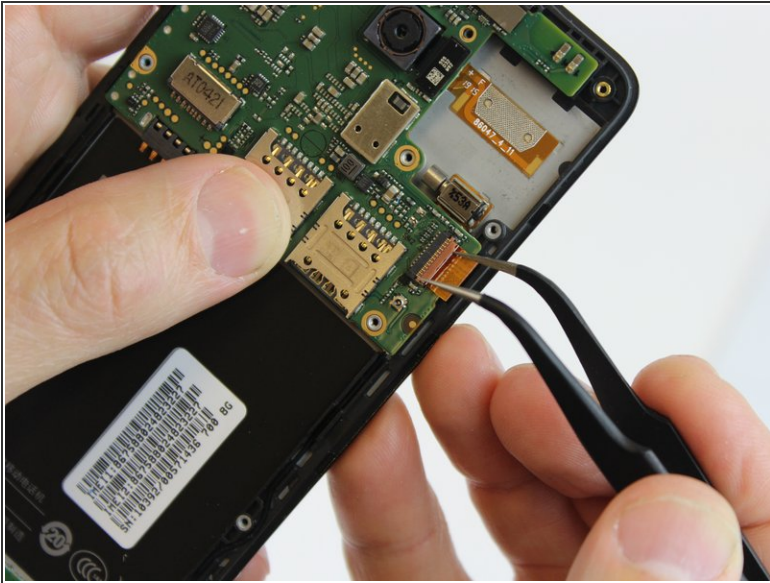
- Slide the spudger between the mid-frame and front body, gradually prying the two bodies apart as you slide the spudger around the perimeter of the phone.

## Step 5



- Remove the 3.4 mm Phillips #000 screw that holds the motherboard to the front body.
- ⚠ Keep this screw separate from the initial twelve.

## Step 6



- Using one prong of the tweezers, pry back the brown clip located on top of the LCD ribbon connector.

## Step 7



- Using one prong of the tweezers, pry the ribbon clip away from the motherboard.

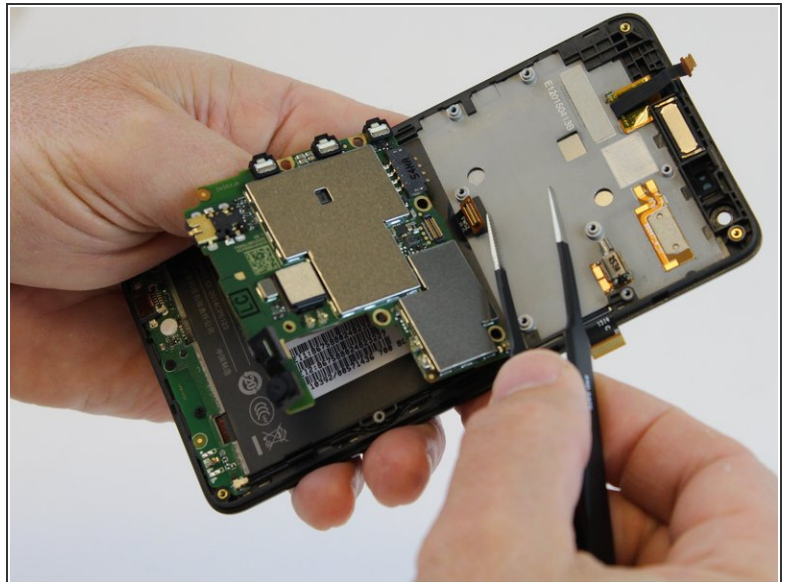


## Step 8



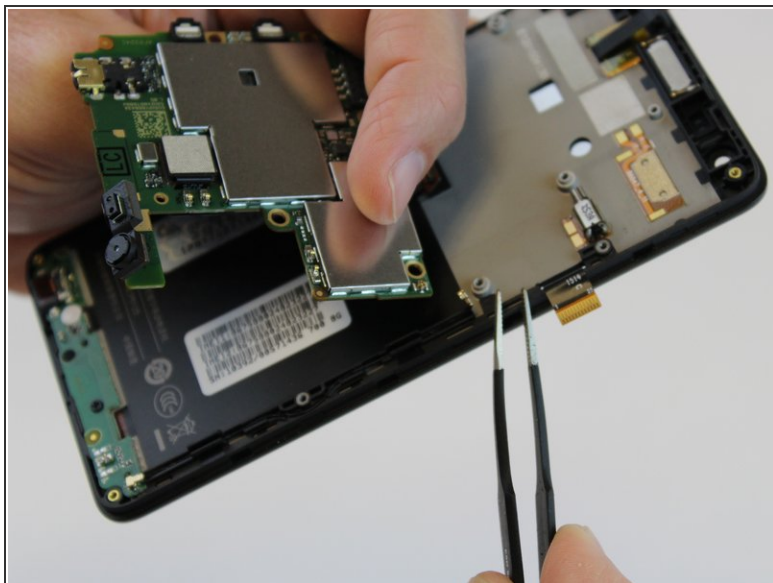
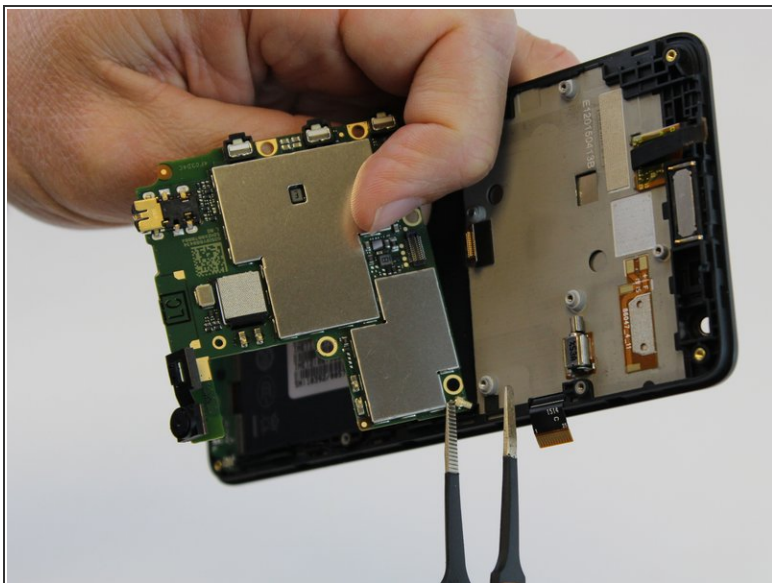
- Lift and hinge the motherboard with your fingers.

## Step 9



- Using one prong of the tweezers, lift and pry back the metal clip positioned over the front proximity sensor ribbon connector.

## Step 10



- Using the tweezers, pull the antenna connector from the motherboard.

## Step 11



- Lift the motherboard out of the front cover and set aside.



## Step 12 — Front Speaker



- Using the nylon or metal spudger, gently pry the front speaker from the screen assembly.

## Step 13



- Using your fingers, gently lift the front speaker from the screen assembly.

## Step 14 — PCB Circuit Board



- Remove the 2.9 mm Phillips #000 screw that holds the PCB circuit board to the screen assembly.

## Step 15



- Using the tweezers, lift the antenna connector from the PCB circuit board.



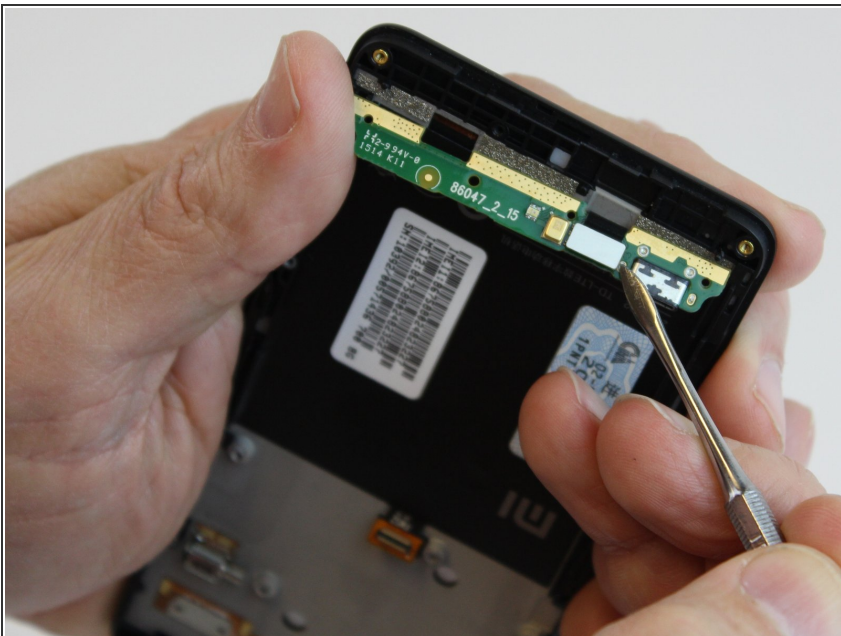
## Step 16



 Do not remove the PCB circuit board at this time.

- Using the nylon or metal spudger, gently pry back the top of the PCB circuit board from the screen assembly.

## Step 17



- Using the nylon or metal spudger, pry back the silver clip covering the ribbon connector.



## Step 18



- Carefully lift the PCB circuit board from the screen assembly and set aside.
- The screen assembly is pictured to the left of the circuit board and is now ready for repair or replacement.

To reassemble your device, follow these instructions in reverse order.