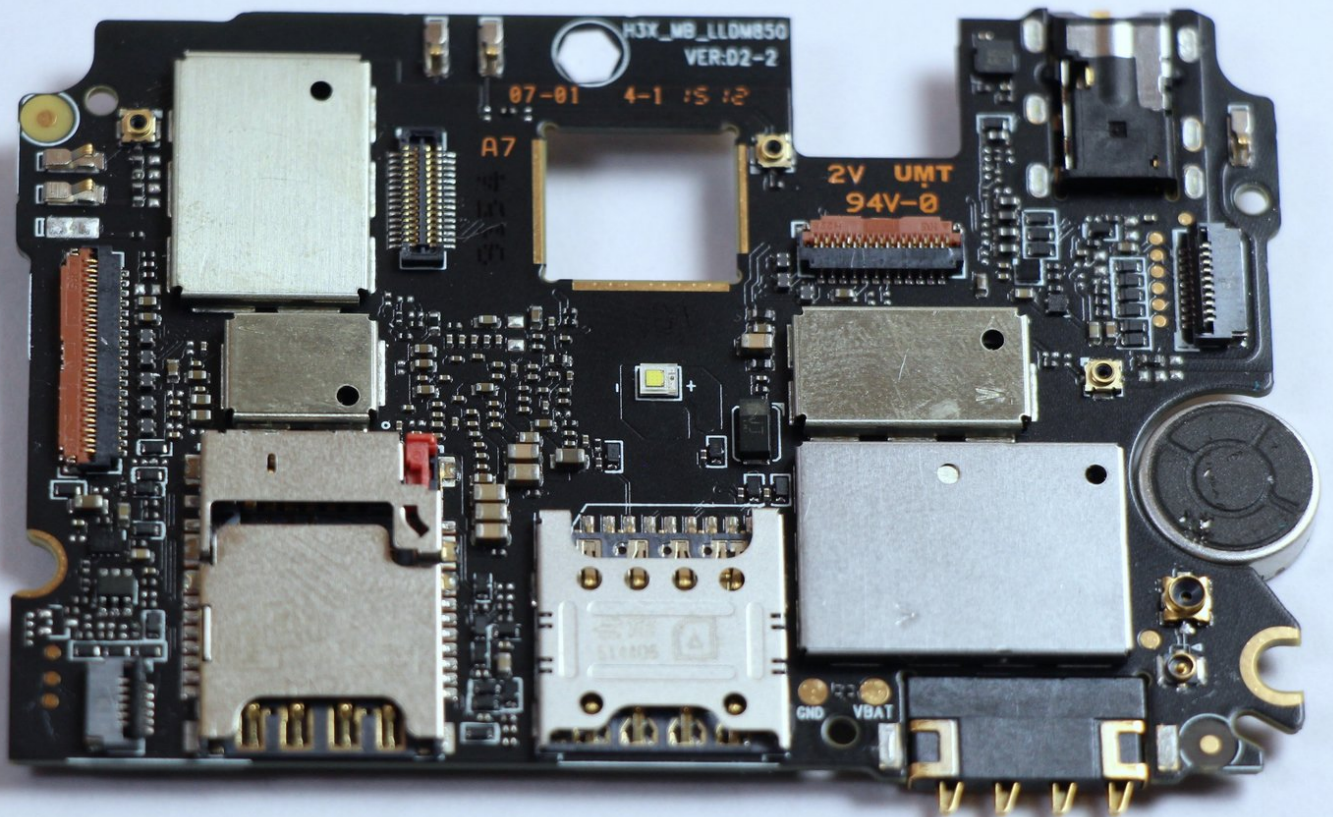




Xiaomi Redmi Note Motherboard Replacement

This guide demonstrates how to replace the motherboard in the Xiaomi Redmi Note.

Written By: AJ Beers



INTRODUCTION

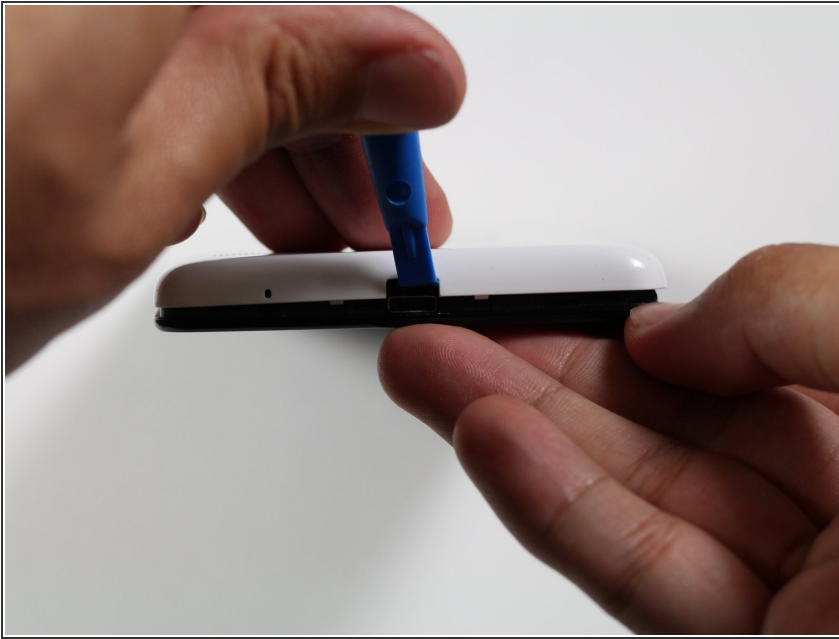
This guide demonstrates how to remove the motherboard from your Xiaomi Redmi Note phone. The motherboard is the "brain" of your phone and houses many integral components. Removing the motherboard is also necessary to replace your phone's screen.



TOOLS:

- [iFixit Opening Tools](#) (1)
 - [Phillips #00 Screwdriver](#) (1)
 - [Tweezers](#) (1)
-

Step 1 — Battery



- ❗ Make sure the Xiaomi Redmi Note is powered off before removing the battery.
- Insert the plastic opening tool between the charging port and the rear case.
- Pry the end of the rear case up from the charging port.

Step 2



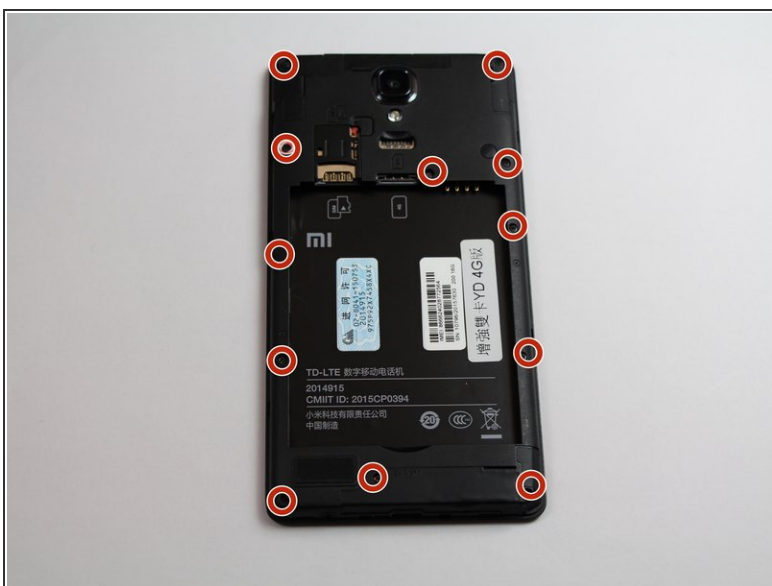
- Run the plastic opening tool along the seam on the side of the phone to remove the rear casing.

Step 3



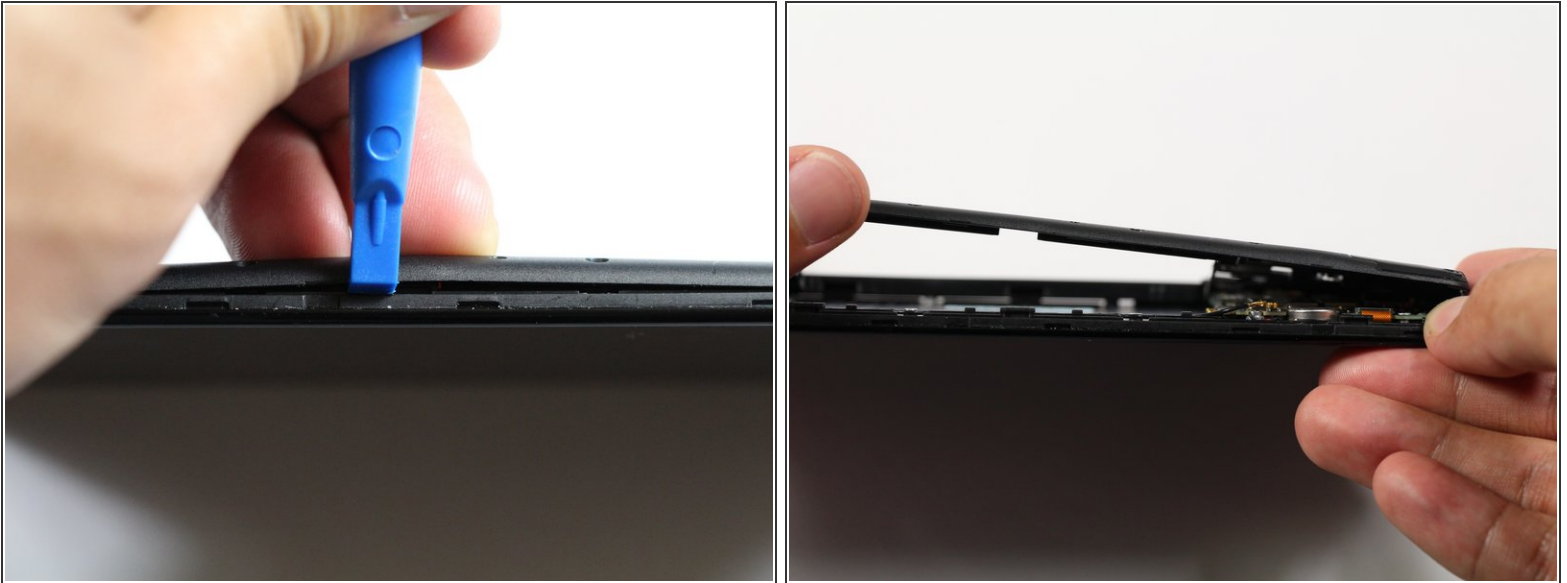
- Locate the indentation at the bottom of the battery.
- Place a finger in the indentation and lift up to remove the battery.


Step 4 — Midframe



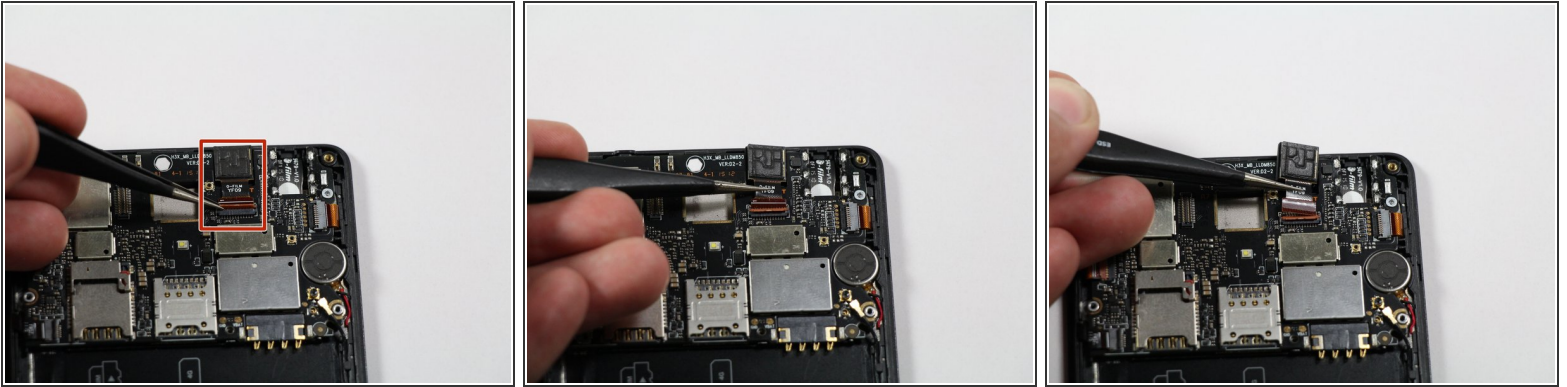
- Remove twelve 3.5mm Phillips #00 screws from the midframe.

Step 5



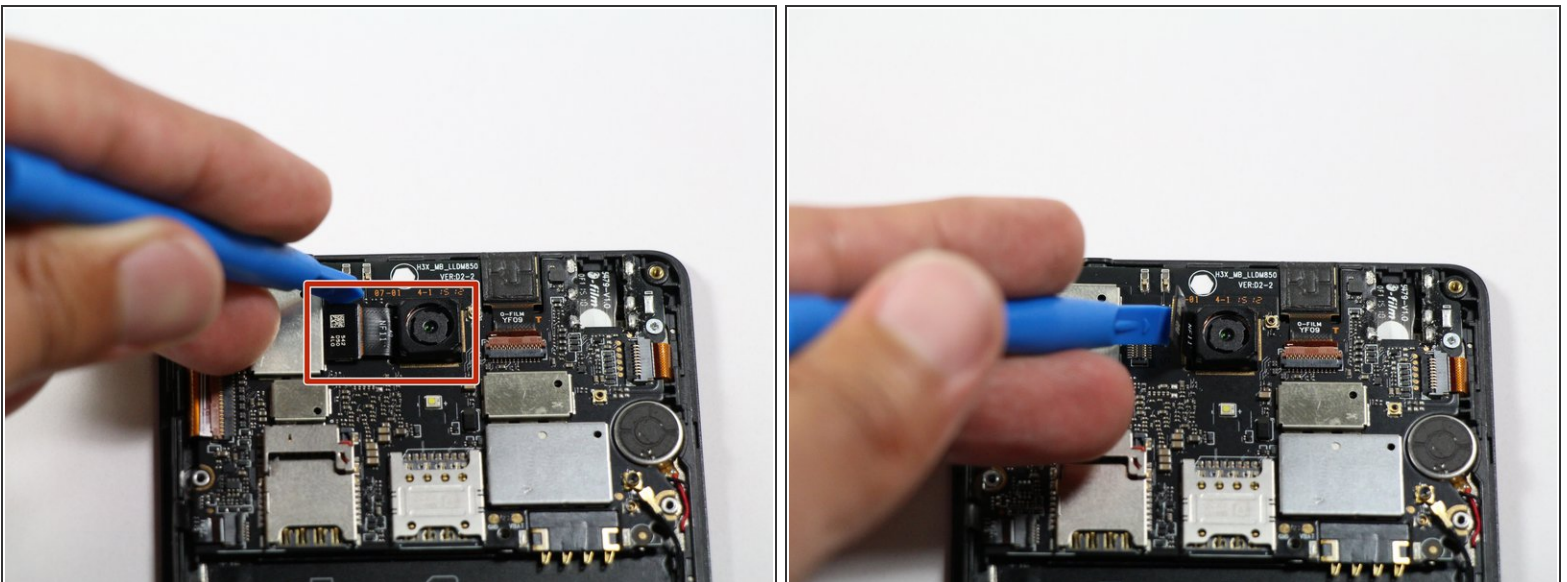
- Insert a plastic opening into the seam between the midframe and the bottom frame of the phone.
 - Run the plastic opening tool along the seam.
 - Pry up the midframe with the plastic opening tool.
 - Once the midframe has been sufficiently lifted with the tool, place a hand underneath the edge to lift the entire component out of the frame.
-  There will be snapping sounds as the clips on the midframe disconnect from the phone.

Step 6 — Front-Facing Camera



- Use tweezers to lift the retaining flap of the zero insertion force (ZIF) connector to the upright position.
- Use tweezers to pull the ribbon cable out of the ZIF connector.
- Remove the front-facing camera from the motherboard.

Step 7 — Rear Camera



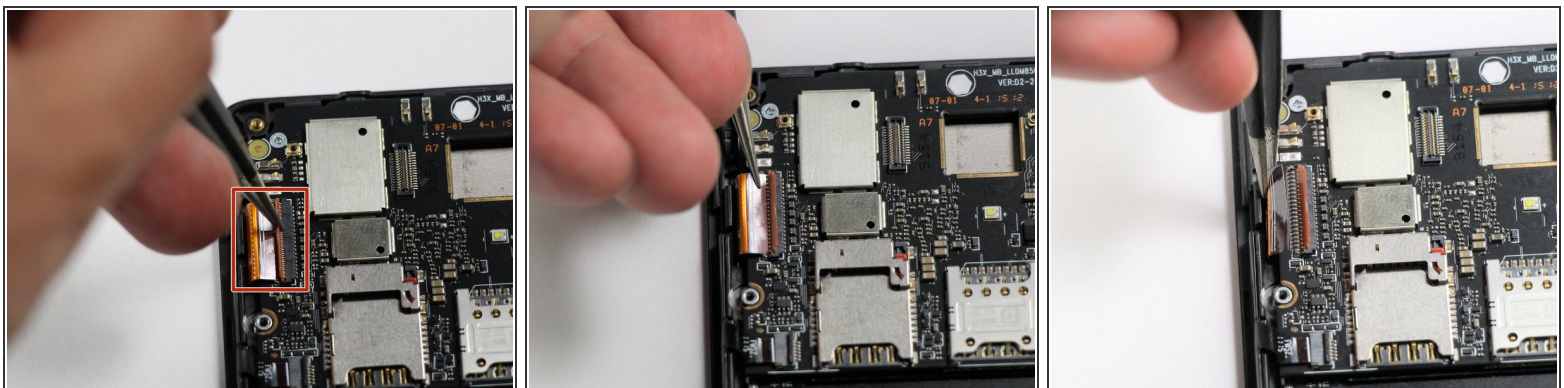
- Disconnect the rear-facing camera from the motherboard by pulling out the press-fit connector to its left.

Step 8 — Motherboard



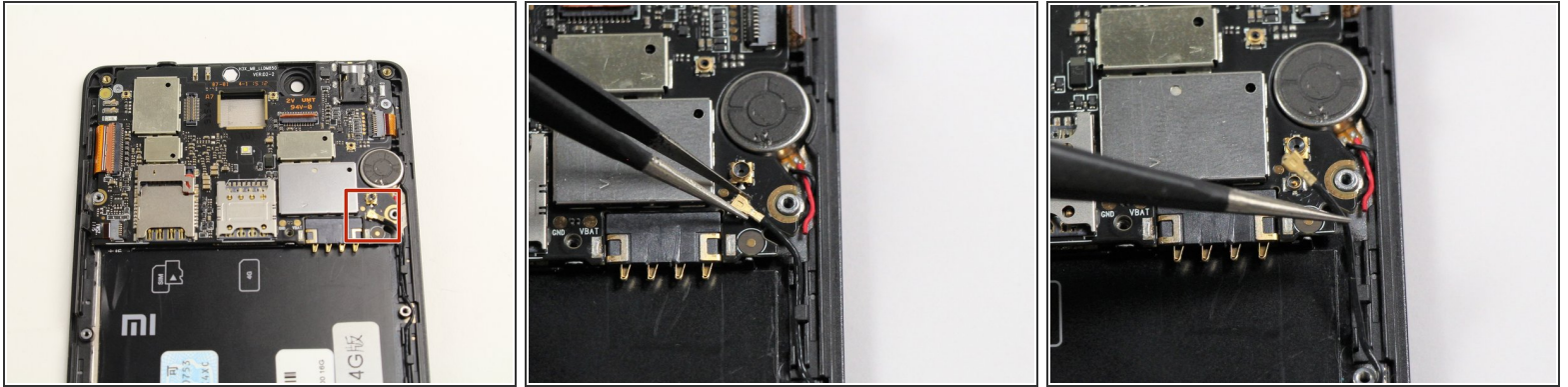
- Locate the three ZIF connectors on the motherboard.

Step 9



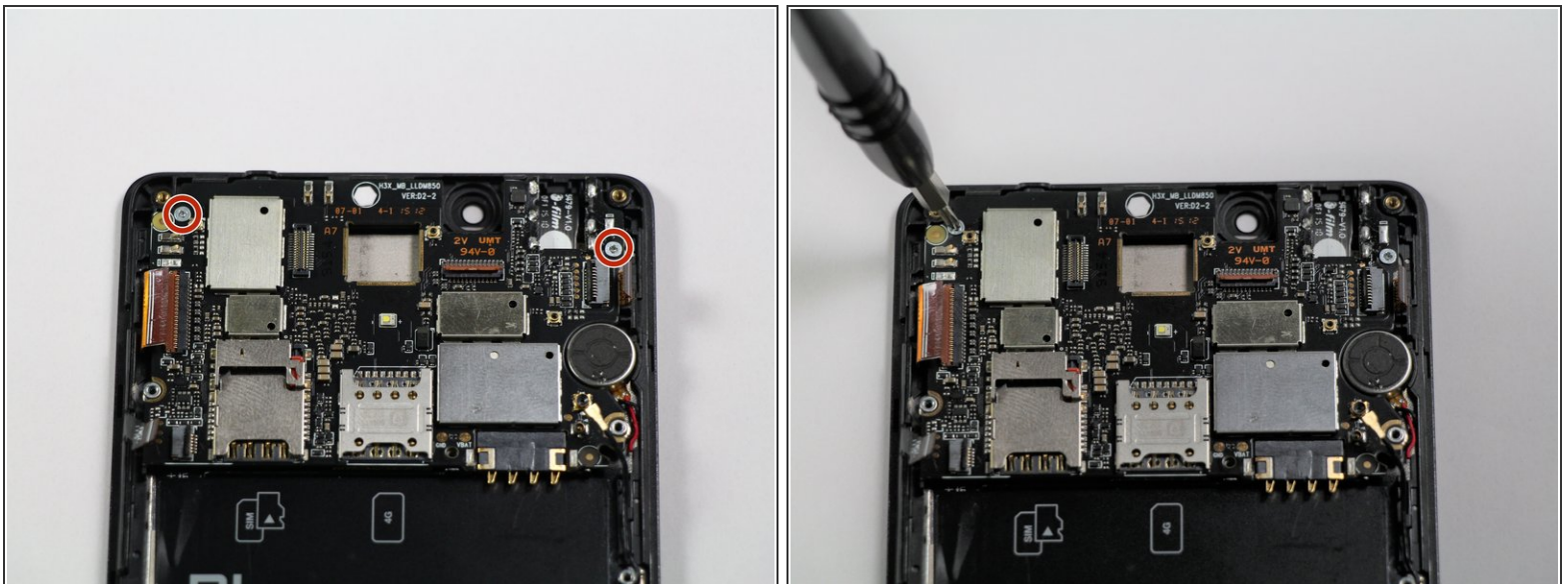
- Use tweezers to lift the retaining flap on the ZIF connector to the upright position.
- Pull the ribbon cable out of the connector by pulling to the left.
- Repeat these steps for the other two ZIF connectors.

Step 10



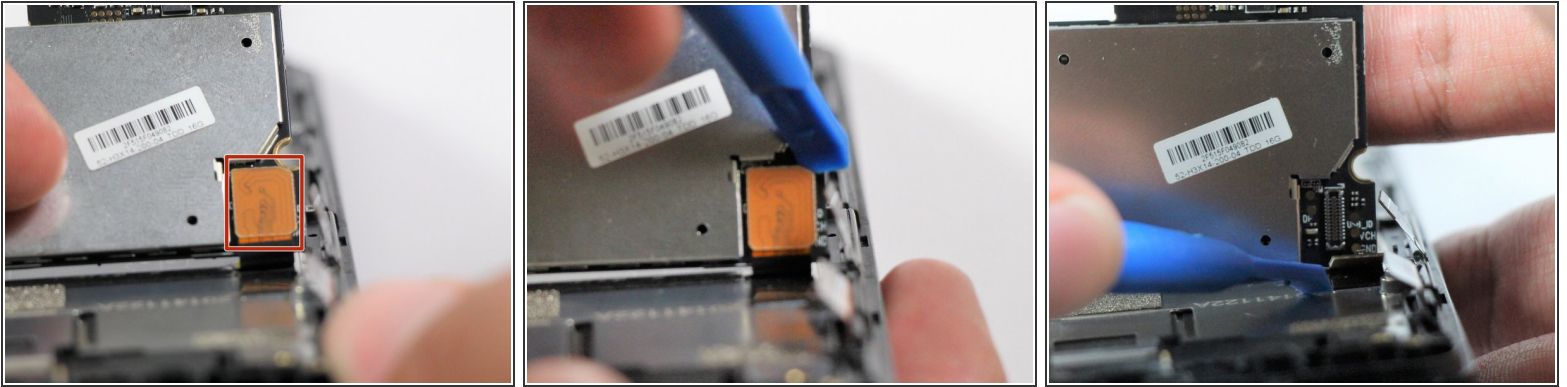
- Locate the antenna cable on the bottom right of the motherboard and use tweezers to lift the cable off of the motherboard.

Step 11



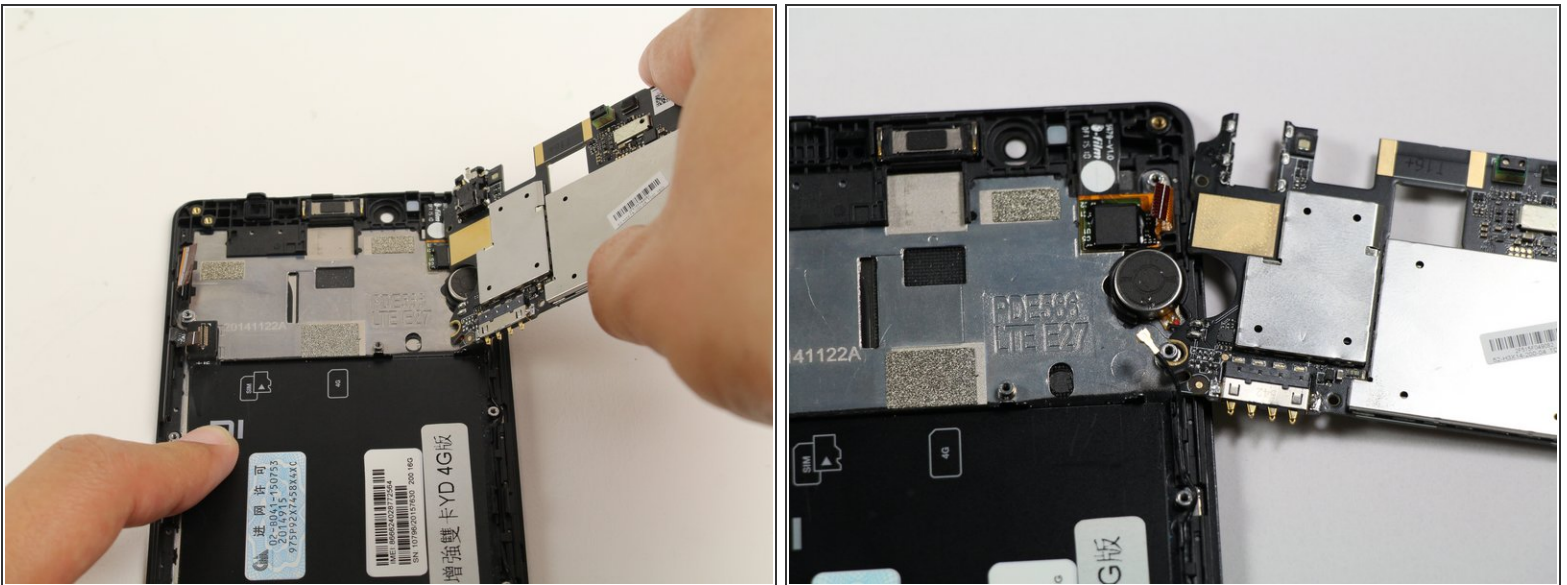
- Remove the two 2.9mm Philips #00 screws.

Step 12



- Flip over the motherboard to reveal the back.
- Use a plastic opening tool to pry off the snap fit connector, located on the bottom right off of the motherboard.

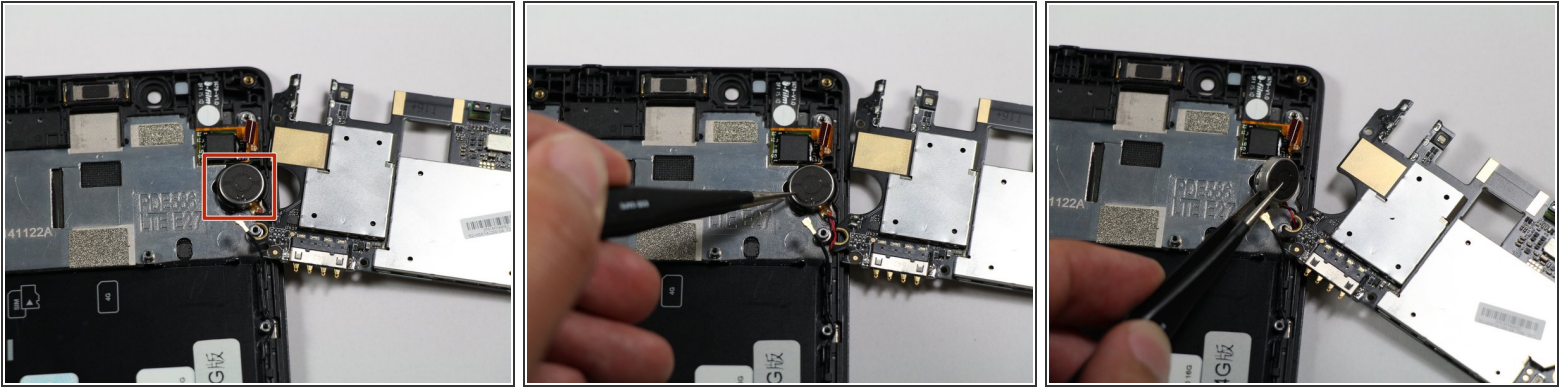
Step 13



- Lift up the motherboard and turn it over to place it by the side of the phone.

⚠ Do not attempt to remove the motherboard at this stage. Pulling on the board can damage its connection to the vibrating motor.

Step 14



- Use tweezers to peel the vibrating motor off the frame of the phone.
- ⓘ The vibrating motor is glued to the frame, so do not be afraid to use force to dislodge it.

To reassemble your device, follow these instructions in reverse order.