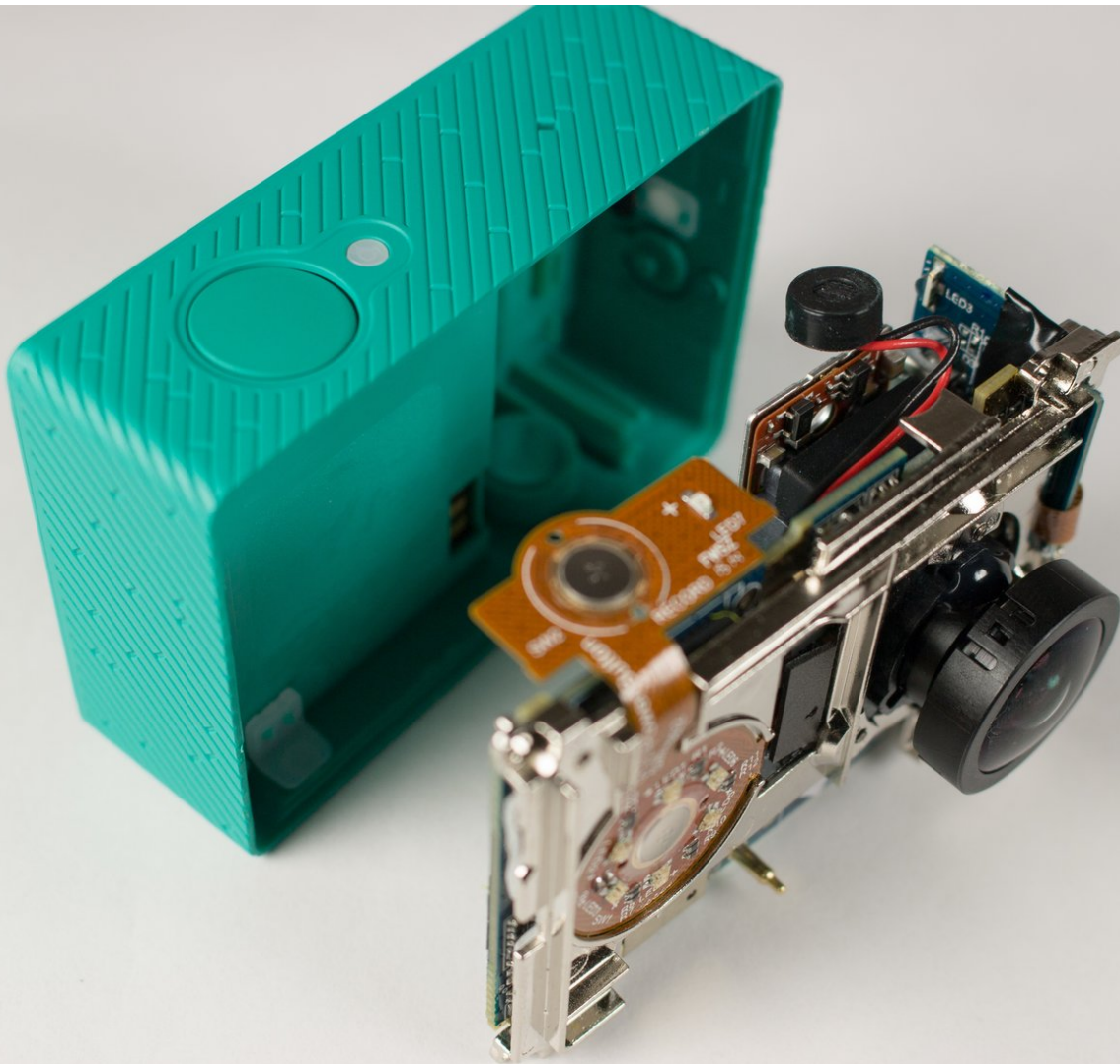




Xiaomi Yi Back Panel Replacement

This guide will show you how to take off the back panel to replace it for a new one.

Written By: Karol Gonzalez



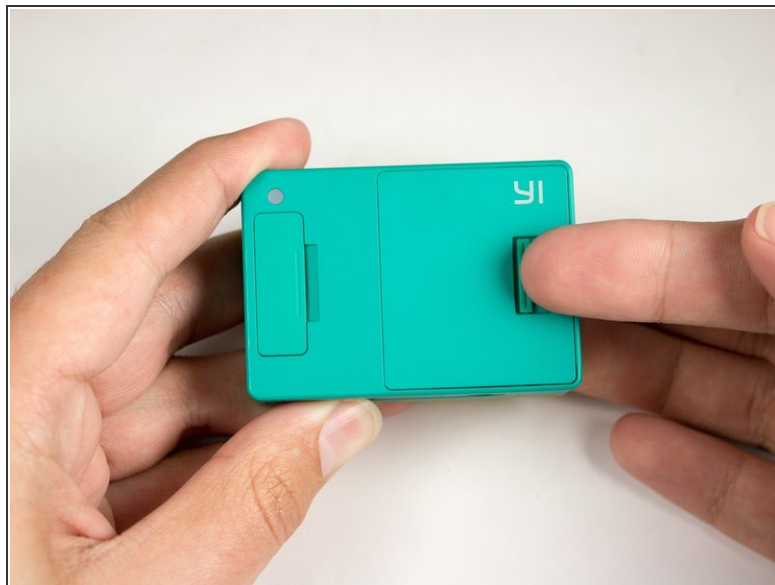
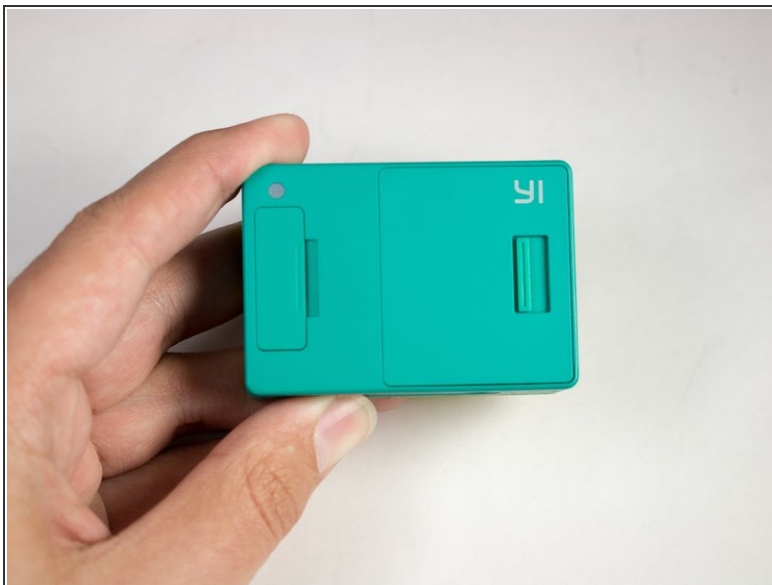
INTRODUCTION

If your camera's back case is damaged, you might consider changing it. To remove the back panel you will need a small blue plastic opening tool.

TOOLS:

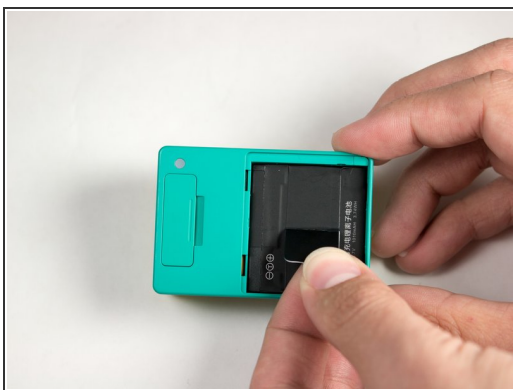
- [iFixit Opening Tools](#) (1)
 - [Tweezers](#) (1)
 - [64 Bit Driver Kit](#) (1)
-

Step 1 — Battery



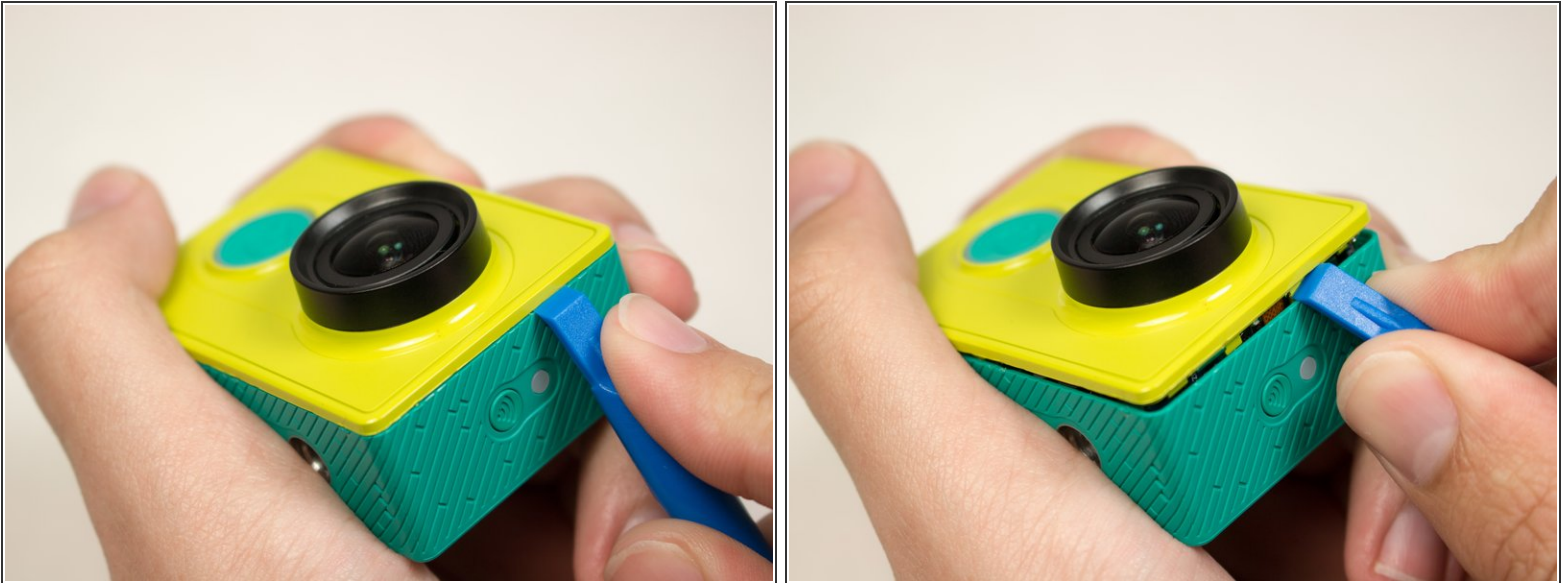
- Push the battery door switch to the left.
- Lift the battery door up.

Step 2



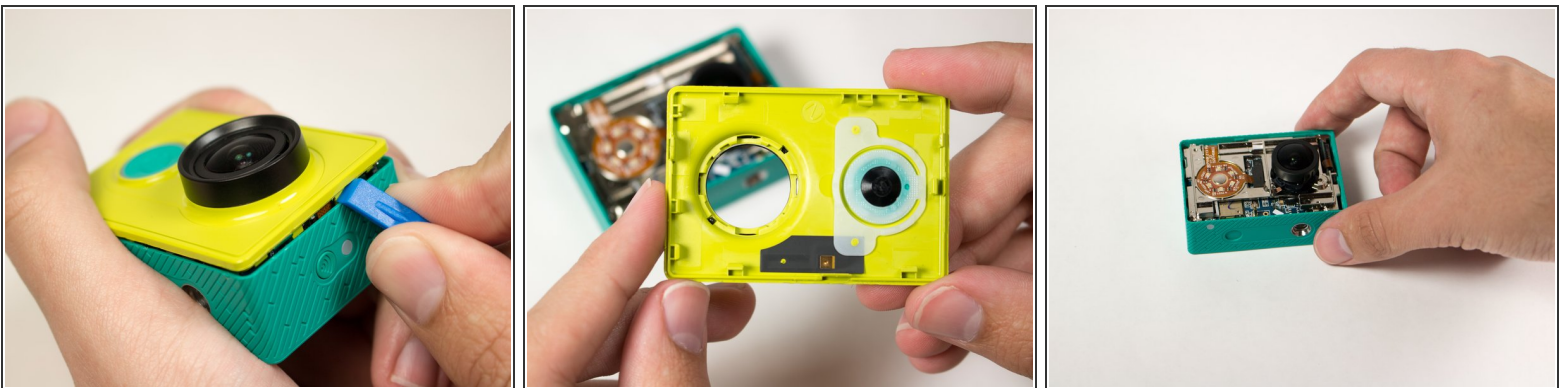
- Lift the battery tab up.
- Remove the battery by pulling the removal tab.

Step 3 — Front Panel



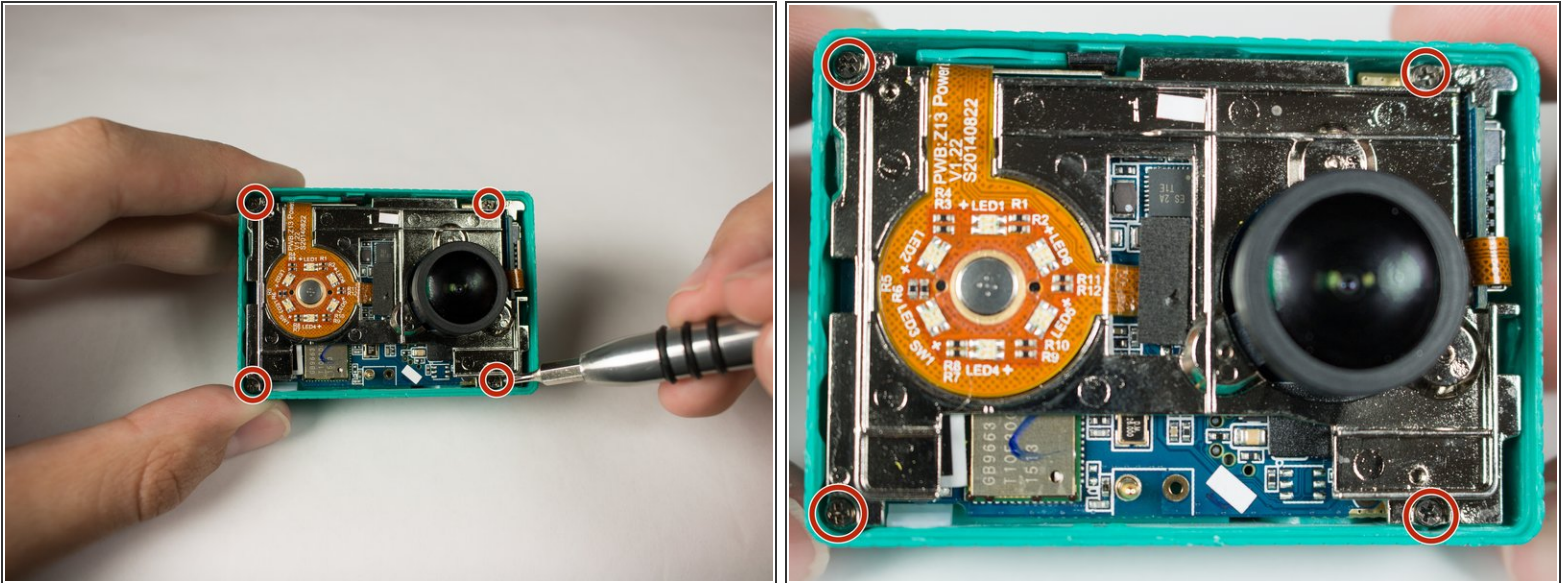
- Introduce the plastic opening tool into any of the sides of the camera.
- Pry with the plastic opening tool at the seam between the front and the back panel.

Step 4



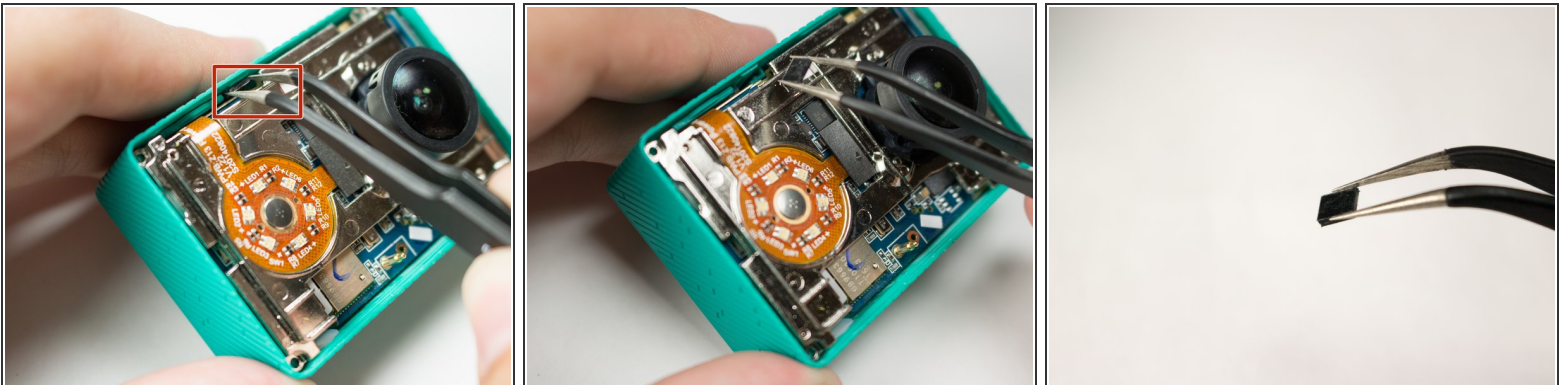
- Slide prying tool along the seam until front panel is fully separated from the back panel.

Step 5 — Back Panel



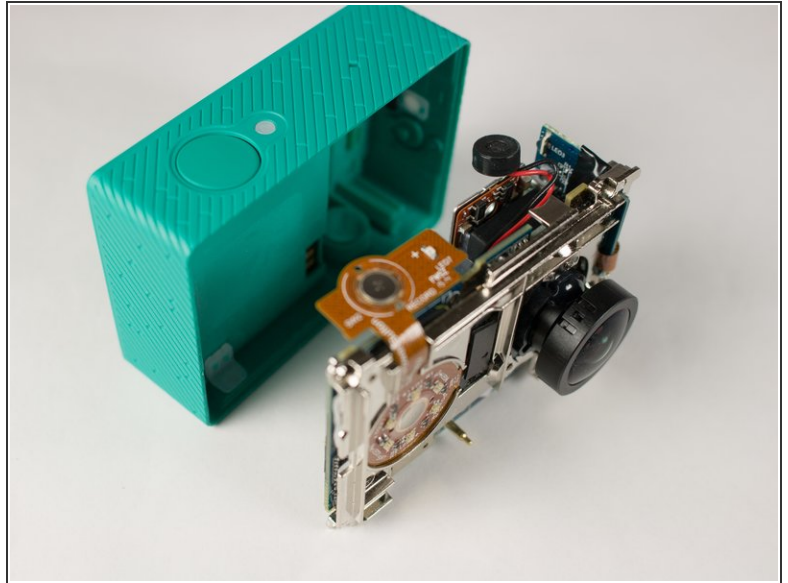
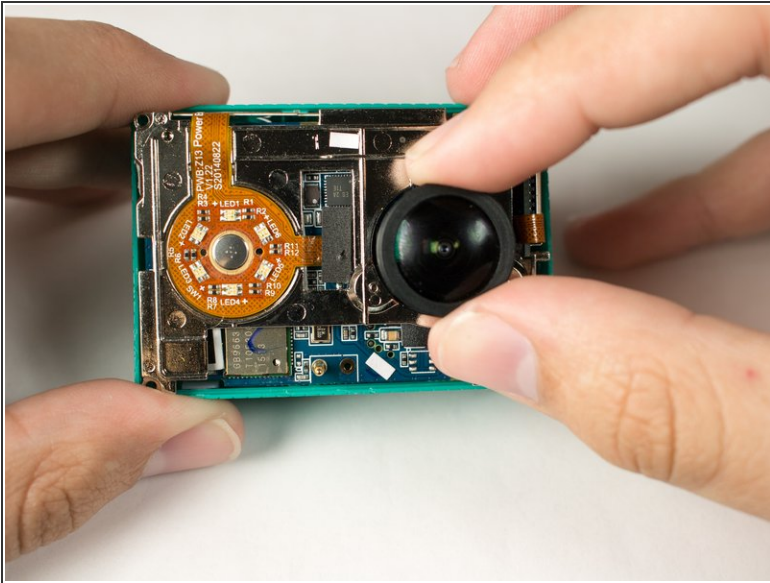
- Remove the four 3.8 mm Phillips #000 screws located in the outer corners of the motherboard.

Step 6



- Pull on and remove the black spacer located at the top inside of the camera body using the tweezers and set the part aside.

Step 7



- Remove the motherboard from from the back case by gently pulling on the lens housing.
- Back panel remains.

To reassemble your device, follow these instructions in reverse order.