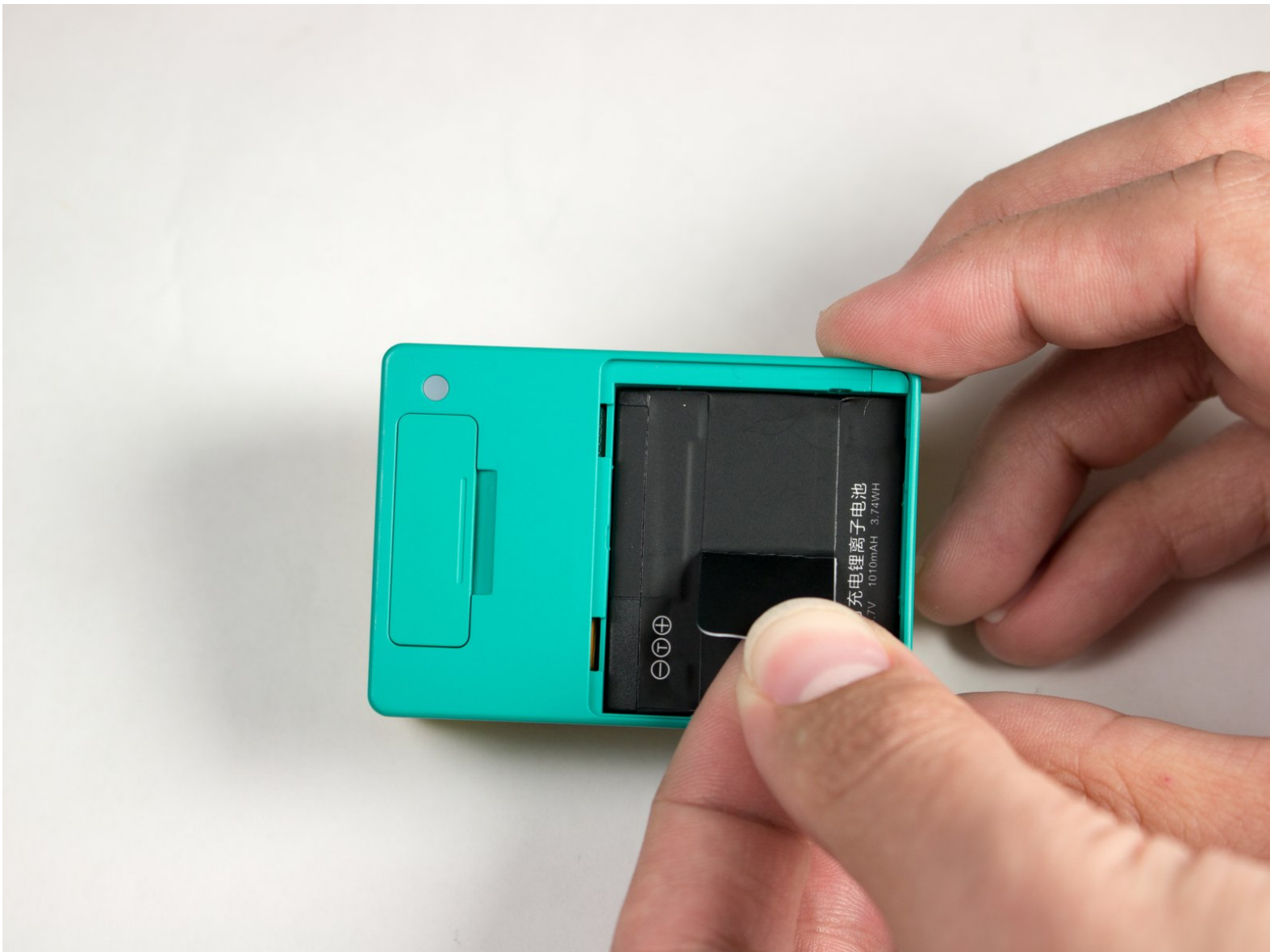




Xiaomi Yi Battery Replacement

This guide will show you how to remove the battery in order to install a new one.

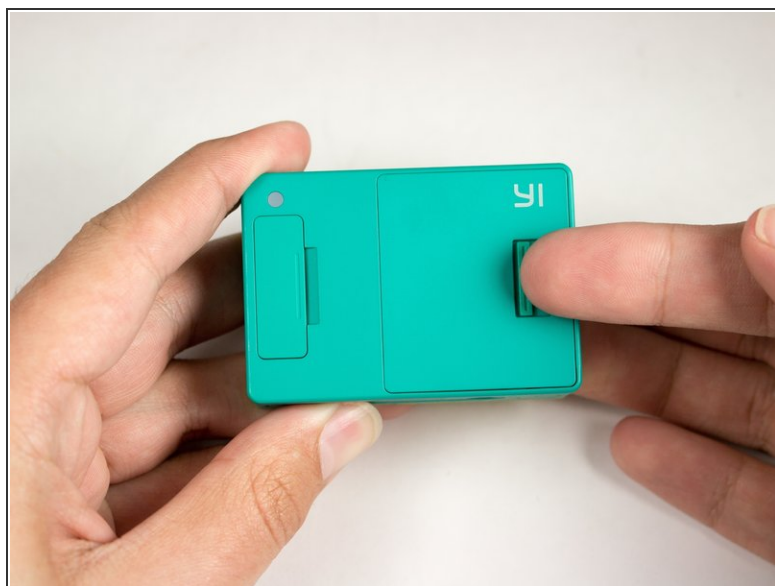
Written By: William Zipperer



INTRODUCTION

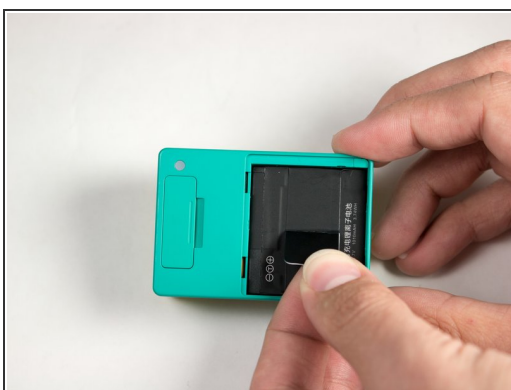
If your camera won't power up or stay on, even after charging it, you may consider replacing the battery. This guide will show you how to remove the battery of the Xiaomi Yi in order to install a new one.

Step 1 — Battery



- Push the battery door switch to the left.
- Lift the battery door up.

Step 2



- Lift the battery tab up.
- Remove the battery by pulling the removal tab.

To reassemble your device, follow these instructions in reverse order.