



Xiaomi Yi Front Panel Replacement

This guide will show you how to remove the front panel on your Xiaomi Yi action camera.

Written By: William Zipperer



INTRODUCTION

The front panel is attached to the main case of the camera. It can be removed with a small blue plastic opening tool.

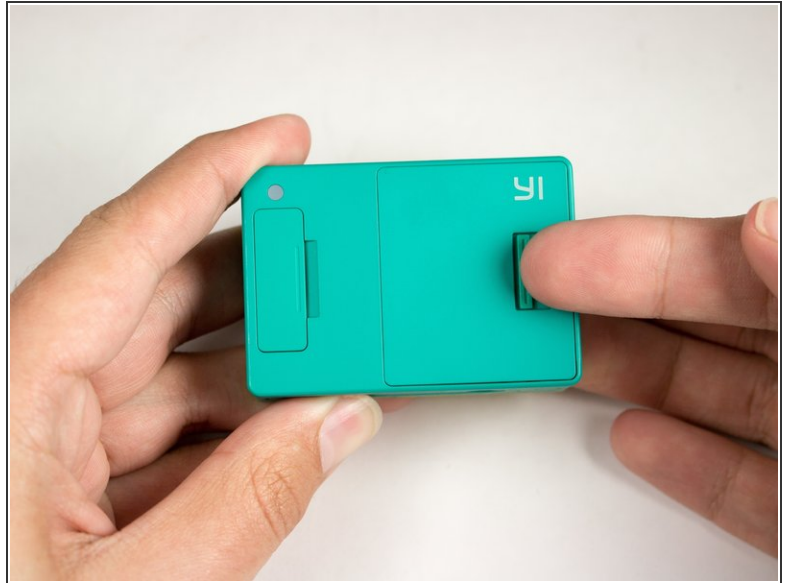
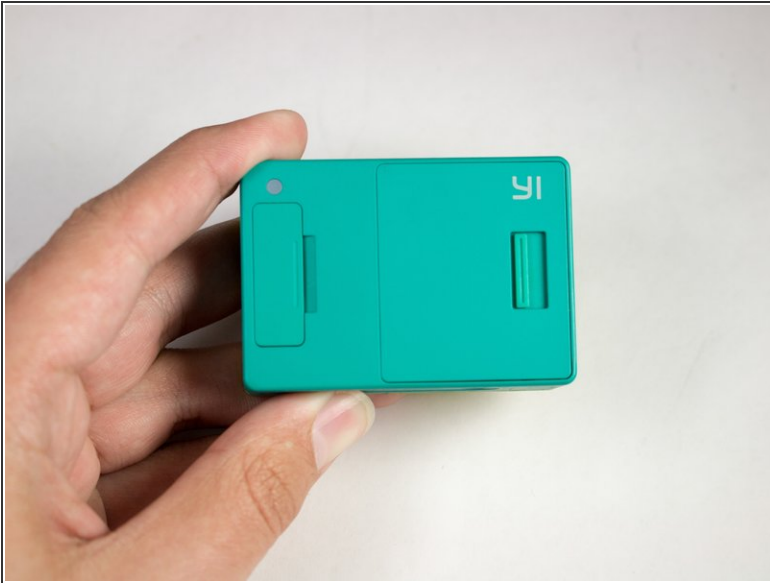
The front panel does not include the lens, but does allow you access to other internal parts of the camera; or, to replace a damaged front panel.



TOOLS:

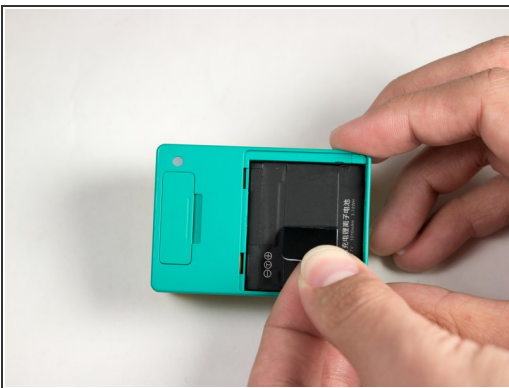
- [iFixit Opening Tools](#) (1)
-

Step 1 — Battery



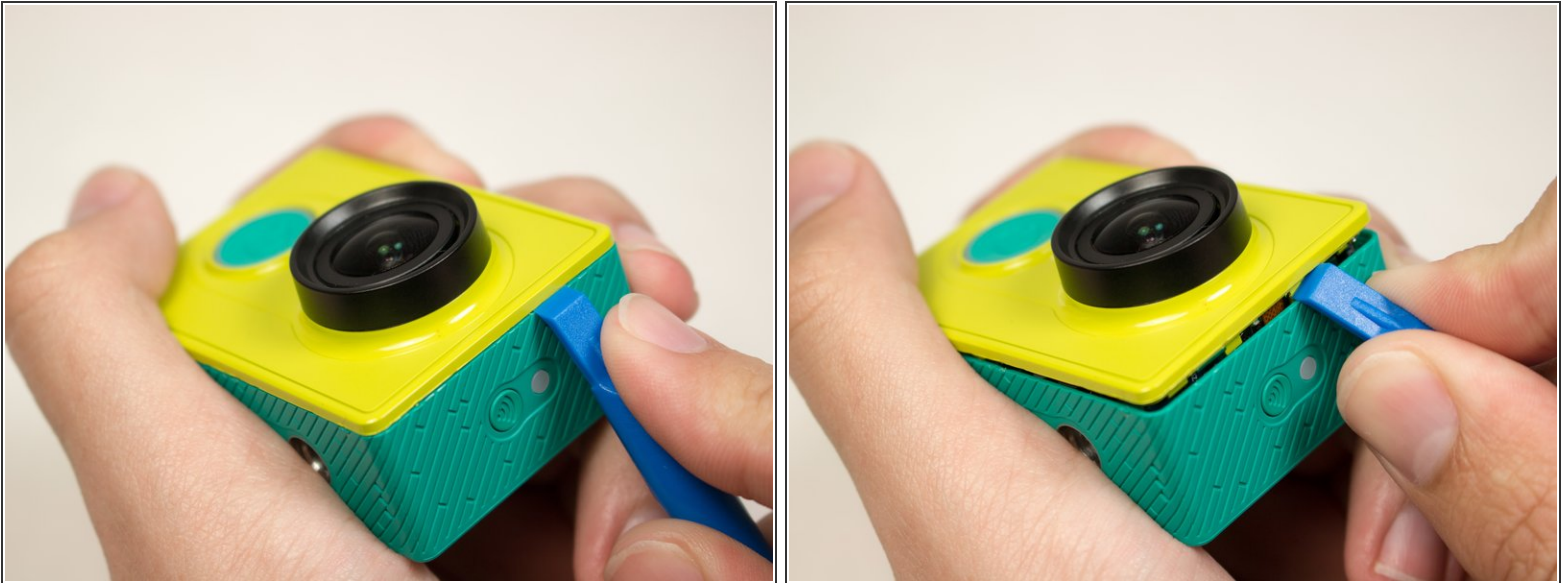
- Push the battery door switch to the left.
- Lift the battery door up.

Step 2



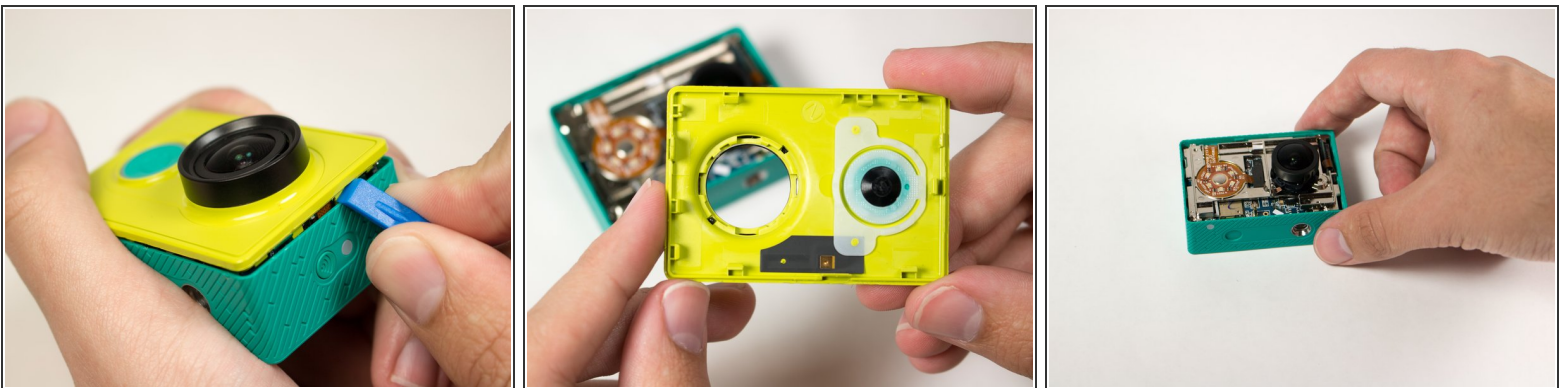
- Lift the battery tab up.
- Remove the battery by pulling the removal tab.

Step 3 — Front Panel



- Introduce the plastic opening tool into any of the sides of the camera.
- Pry with the plastic opening tool at the seam between the front and the back panel.

Step 4



- Slide prying tool along the seam until front panel is fully separated from the back panel.

To reassemble your device, follow these instructions in reverse order.