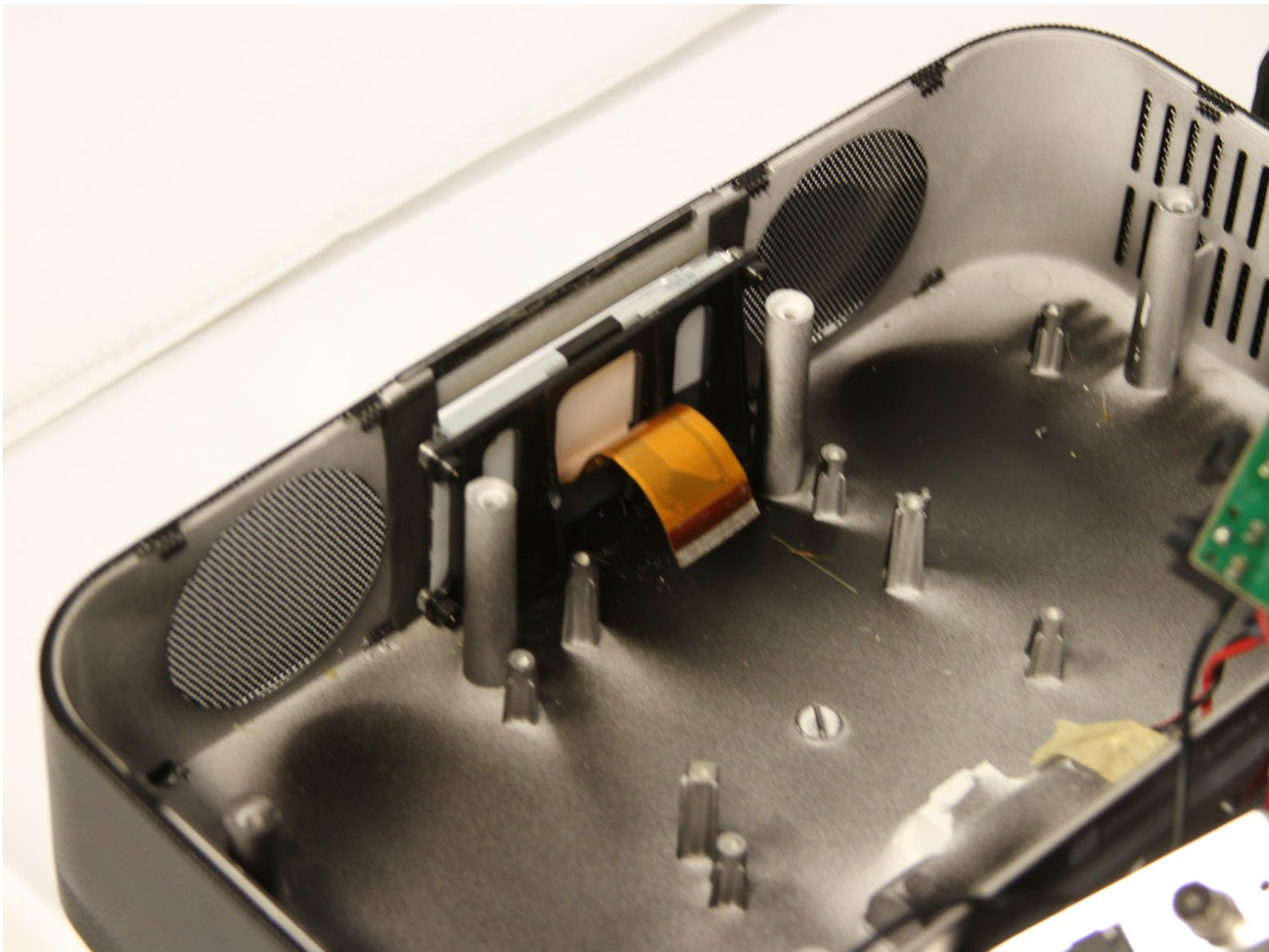




# XtremeMac Luna LCD Display Replacement

This guide illustrates how to replace the lcd screen.

Written By: Matt Ducasse



---

## INTRODUCTION

If the screen on your Luna is damaged or not functioning, it can be replaced following these steps.

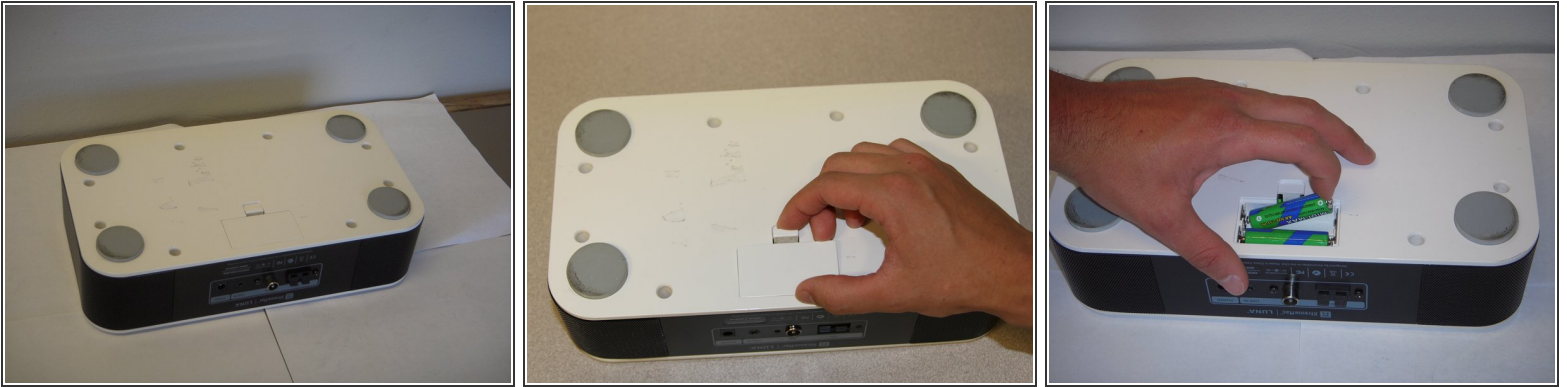
---



### TOOLS:

- [Phillips #00 Screwdriver](#) (1)
-

## Step 1 — Bottom Panel



- Flip the device over so that the batteries are closest to you.
- Remove the battery lid by pressing the battery cover's tab and pulling it away from the device.
- Push the battery against the spring and lift it out of the casing.
- Repeat with the other battery.

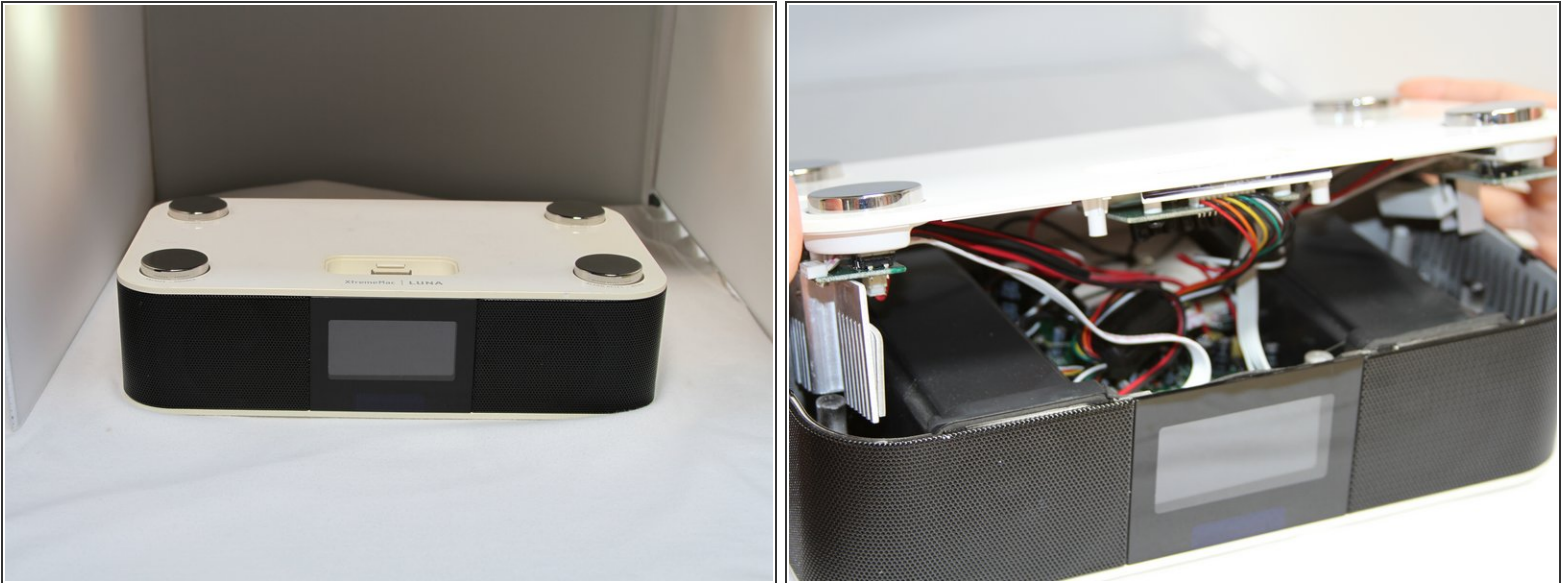
## Step 2



- Unscrew all eight 12mm Phillips head screws with a Philips #1 screwdriver.
- ⓘ The iFixit 26 bit screwdriver kit will not reach the screws. Make sure to use a screwdriver that is thin enough to not get stuck in the screw holes.

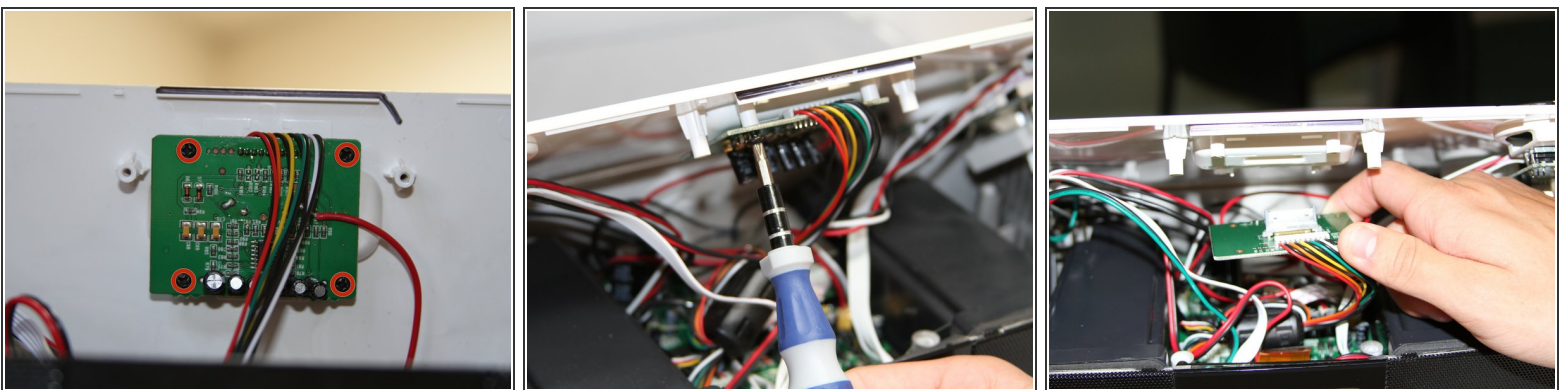


### Step 3



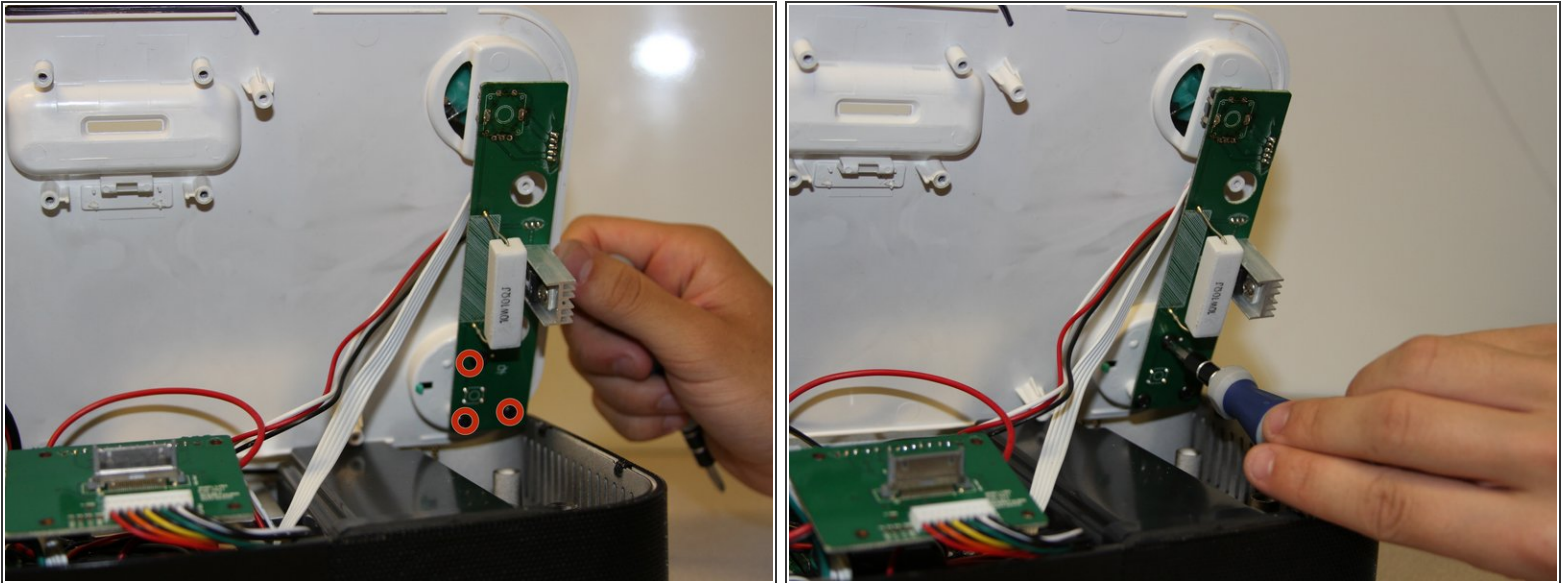
- Flip the Luna back over so that the buttons are facing upward and the LCD screen is facing you.
- Gently tilt the lid back 45 degrees so that the inside is exposed.
- ⓘ Be mindful of the wires inside of the Luna. It is easy to break a connection if a wire gets caught.

### Step 4 — Dock Circuit Board



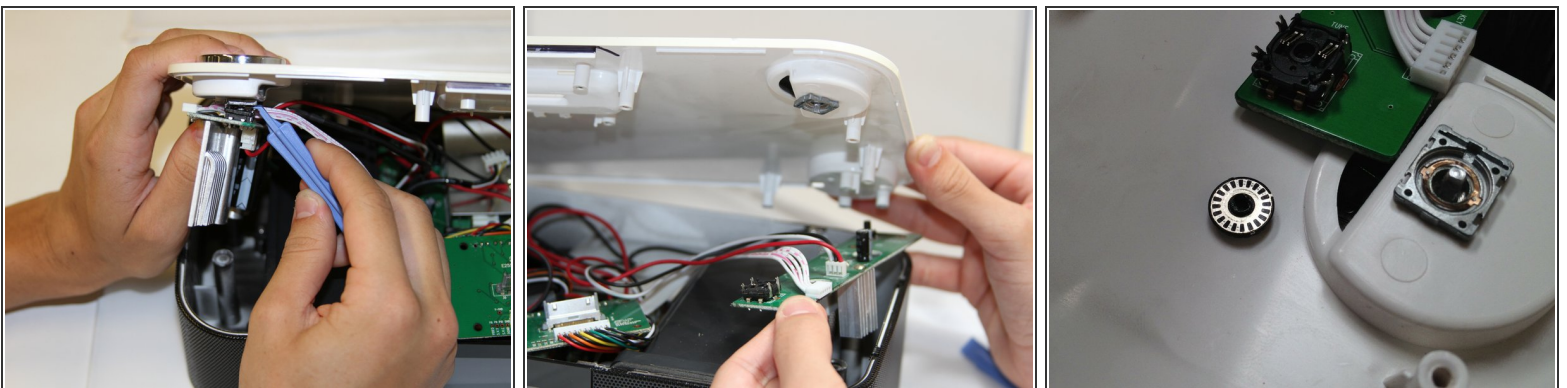
- Unscrew the four black 7mm screws with the Phillips #1 screw driver that hold the middle circuit board to the top case.

## Step 5 — Button Circuit Boards



- Unscrew the three 7 mm black screws using the Philips #1 screwdriver on the back end of the left and right circuit board.
- ⓘ Removing the right circuit board first will make it easier to unscrew the left because the heat-sinks on the left circuit board can get in the way of the screwdriver.

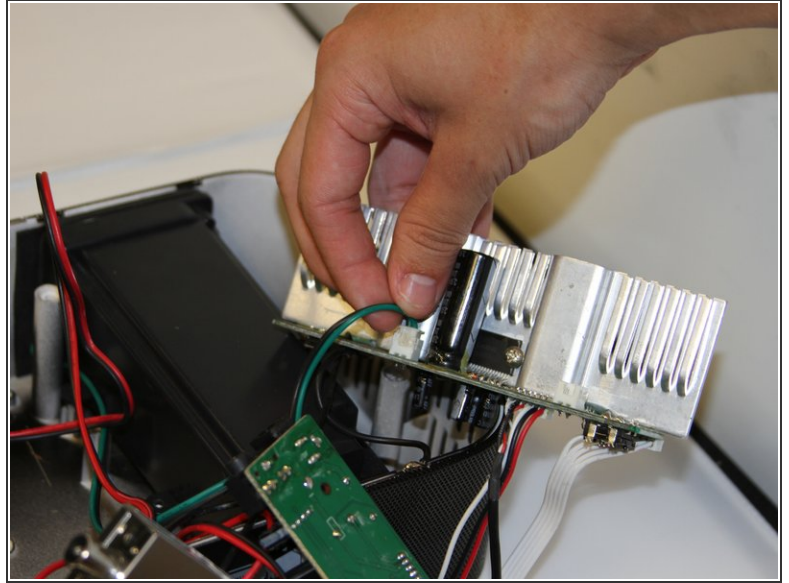
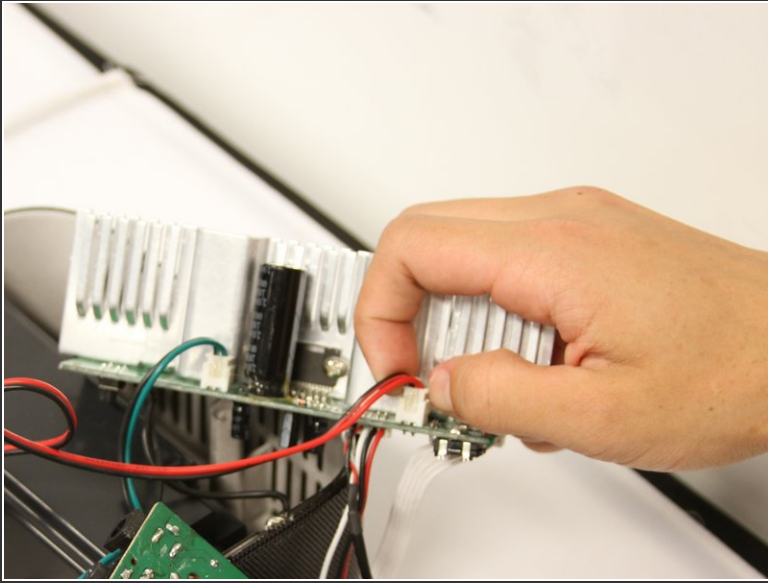
## Step 6



- Use a plastic opening tool to pry the black connections away from the top casing.
- ⓘ Be attentive when you separate the circuit boards from the top, as there is a loose wheel inside.

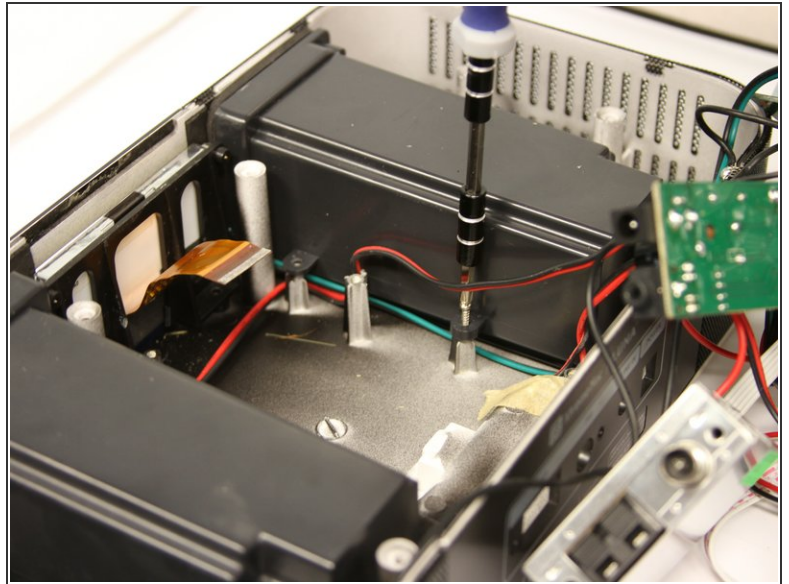
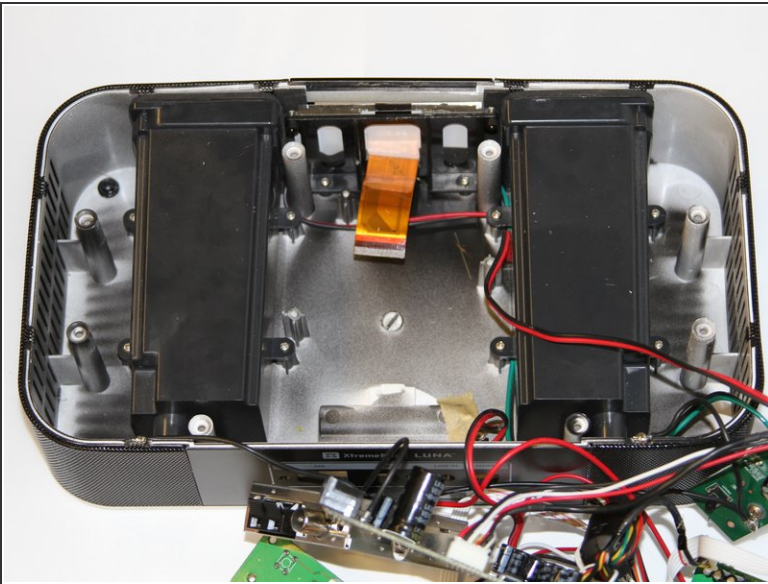


## Step 7



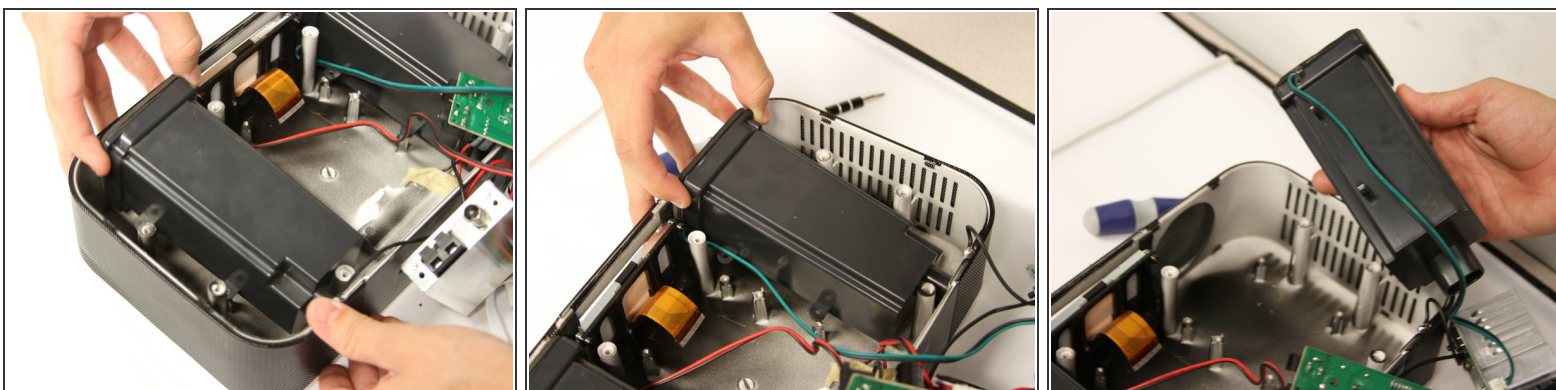
- Turn the circuit boards over. Remove the two connections on the left side by pulling on the tabs.
- ⓘ The glue that holds the connection together will come off when you pull. Pull on the tab with enough force to break the glue without damaging the wires.

## Step 8 — Speakers



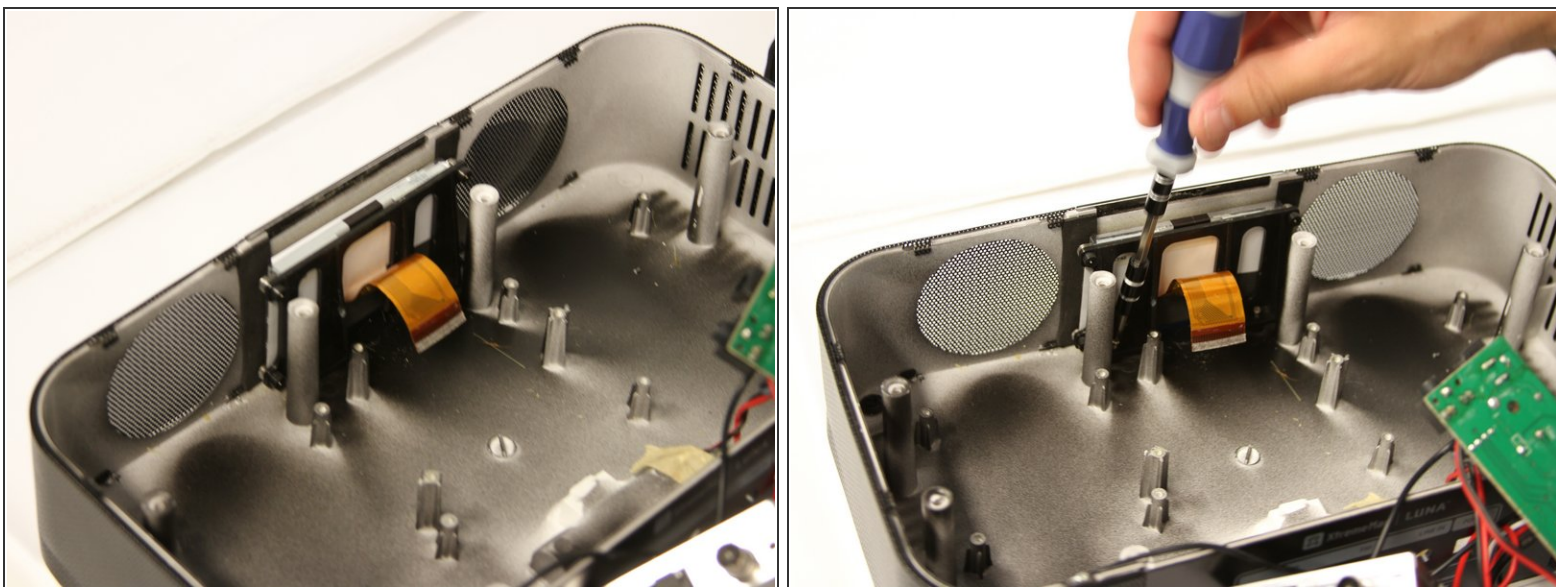
- Unscrew four 7mm Phillips screws from the base of each speaker unit.

## Step 9



- Lift the speakers up out of the Luna chassis.

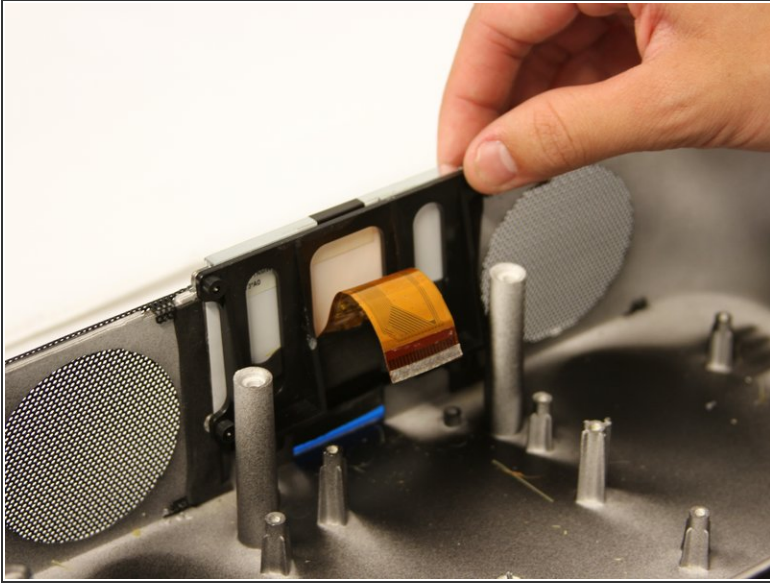
## Step 10 — LCD Display



- Unscrew two 10mm silver screws at the base of the LCD screen to free it from the chassis.



## Step 11



- Gently pull up on the LCD screen to remove it.

To reassemble your device, follow these instructions in reverse order.