



Yamaha DM1000 Fader replacement Replacement

Motorized fader replacement included transistor

Written By: F. Jeanneret



INTRODUCTION

Open the console and replacing the fader, step by step. This job need soldering skills an couple of hour.



TOOLS:

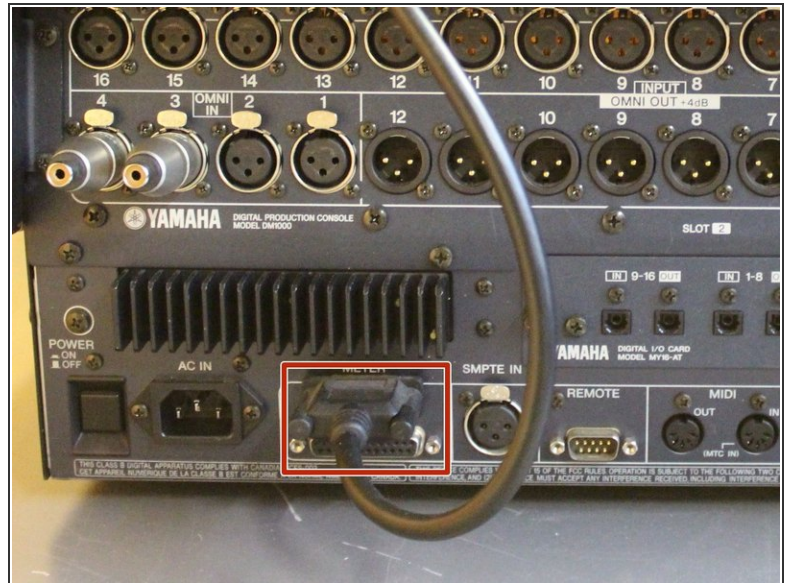
- [4mm Phillips Screwdriver](#) (1)
 - [Soldering Iron](#) (1)
 - [New Item](#) (1)
-

Step 1 — Remove wood panels (if you have it)



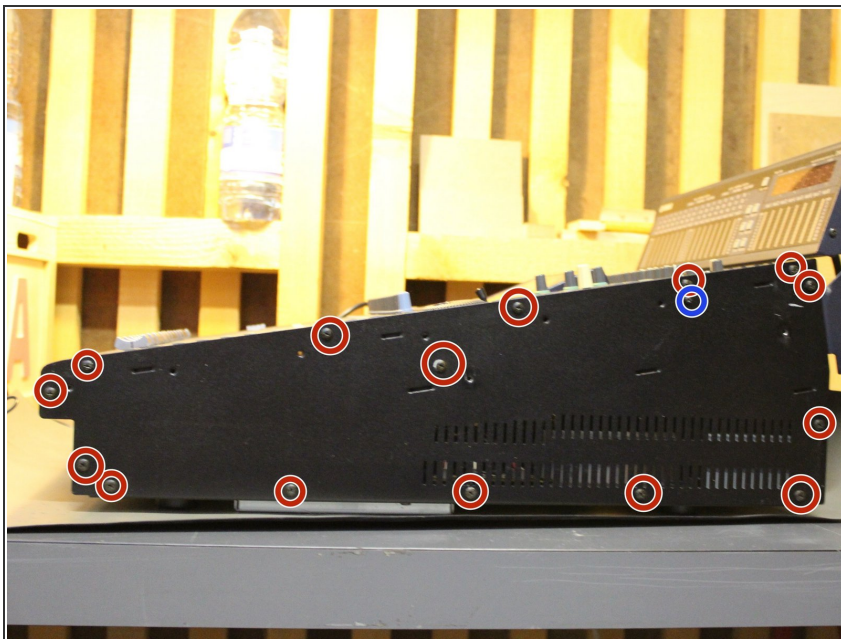
- Remove 5 screws
- Three screws for the lower part.
- Two screws for the upper part
- use Philips screwdriver n•4

Step 2 — Remove Meter (if you have one)



- Remove sub-d connector from bargraph
- Remove 4 screws (2shorts/2 long) from metal bracket and mixing desk

Step 3 — remove side panels



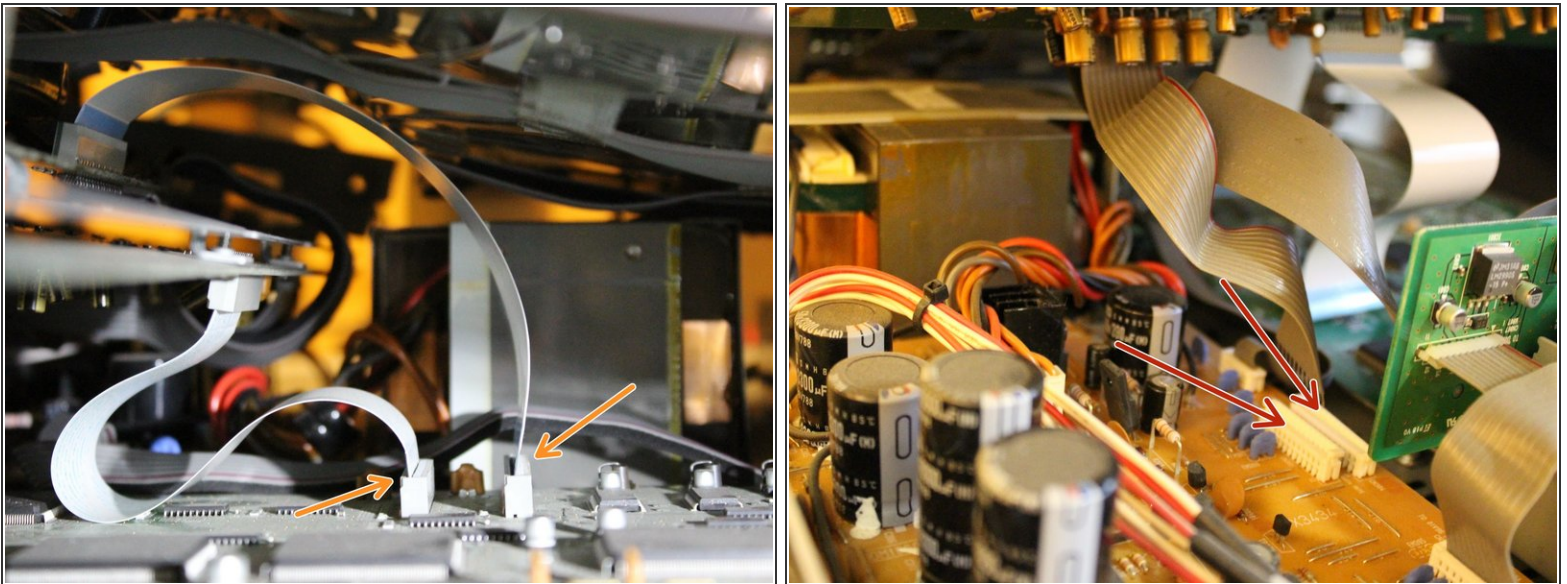
- Remove 15 screws
- Remove 1 smaller screw
- remove Phillip screw n•2
- Attention: these are self-tapping screws => risk of creating chips when screwing

Step 4 — Remove fader button + front &



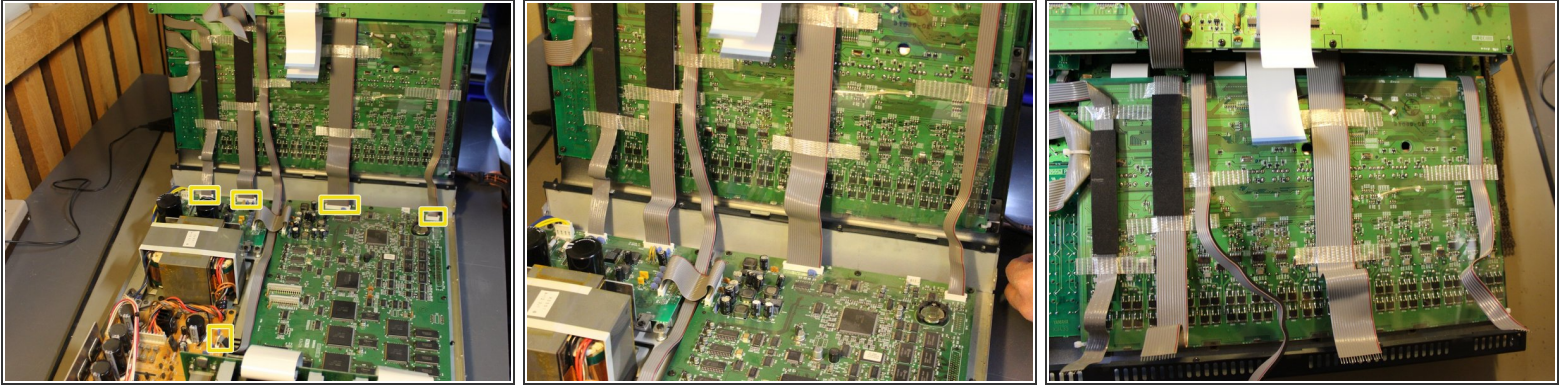
- remove 16 + 1 fader with fingers or a with a plastic card
- remove 4 screws at the back
- remove 4 screws at the front (bad pic here)

Step 5 — Remove 4 cables before openin



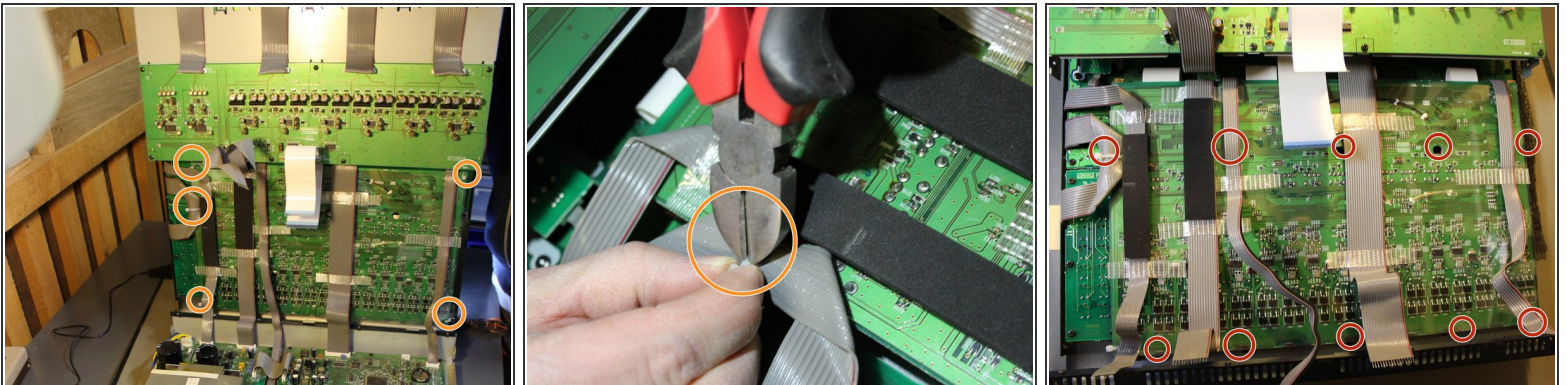
- remove carrefully from the side the 2 withe connectors
- remove carrefully 2 cables from the power unit, unlock first the connector

Step 6 — Opening the console



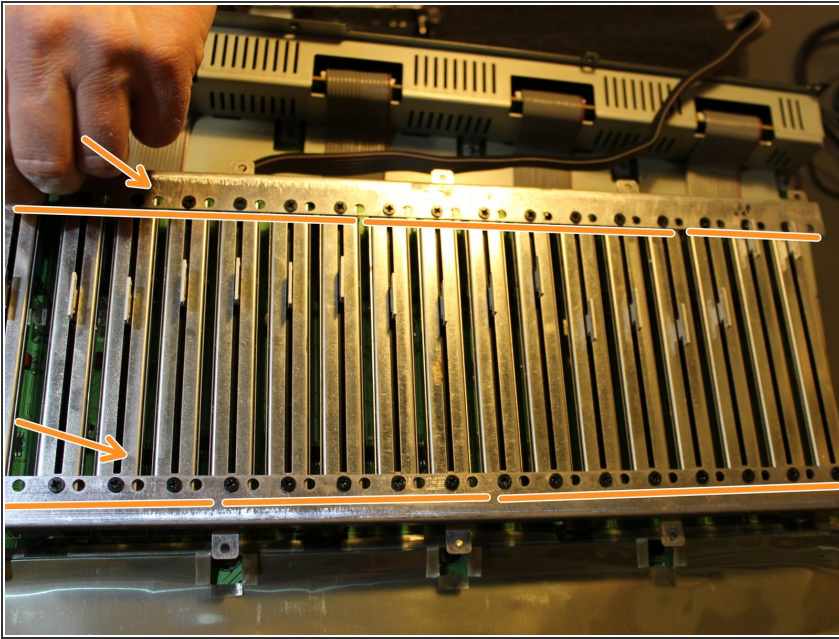
- open carefully the console from back to front by graping the sides
- open connectors and remove 5 cables
- you can now remove the upper part of the console

Step 7 — Fader PCB removing



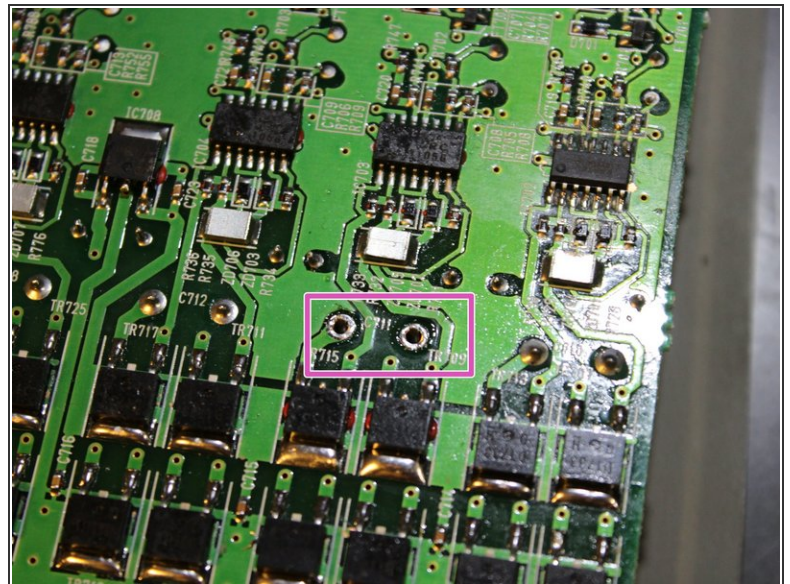
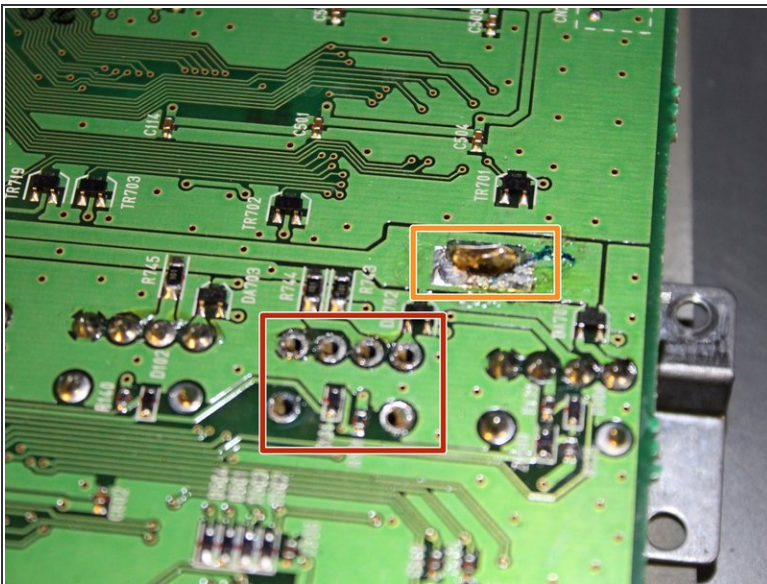
- cut the pastic fange, 4 on the corners and 1 fixing a flat cable
- Remove 10 screws using a philips n°2

Step 8 — Removing Fader cover



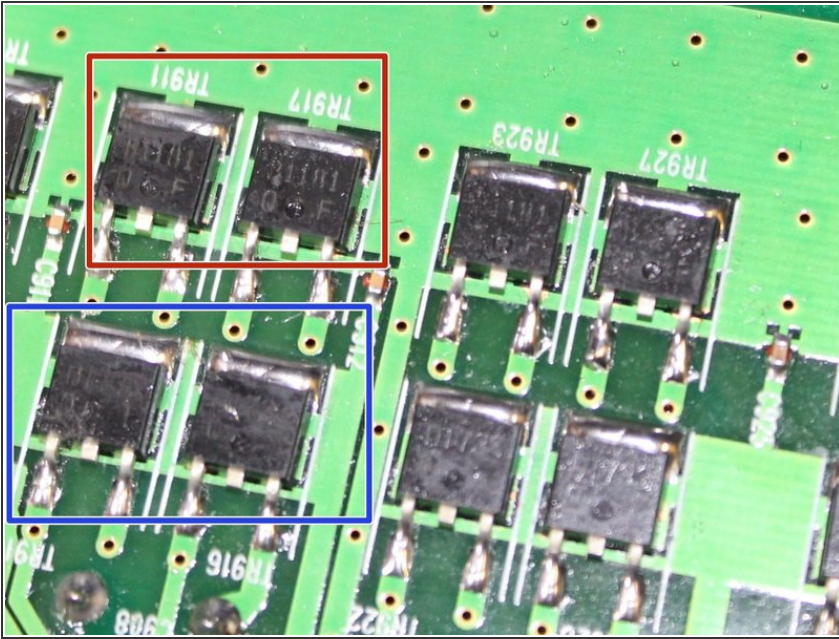
- For each fader remove the 2 blacks screws with a philips n°2

Step 9 — Remove cover + fader



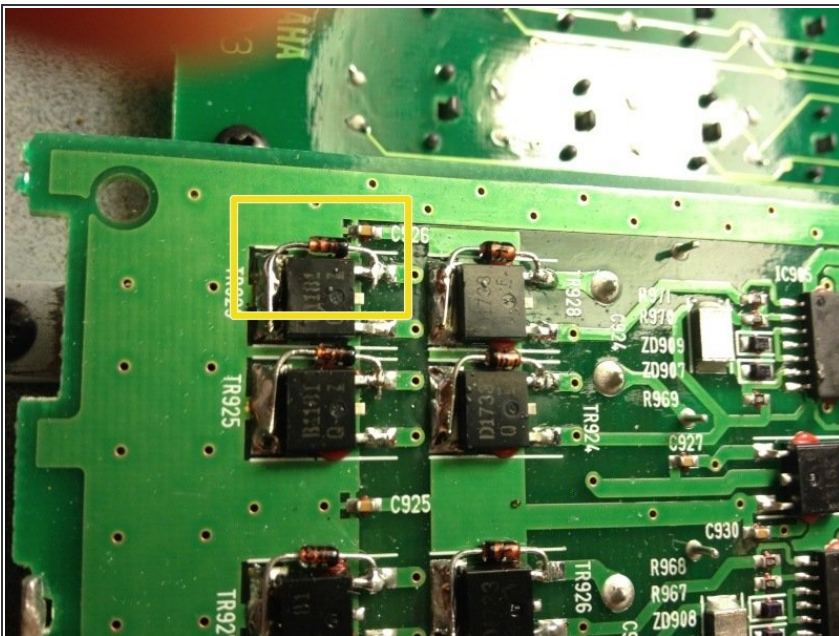
- remove solder from 4 metal bracket that are fixed to the PCB from the cover
- remove solder with a pump from 6 pin of the fader
- remove solder from the 2 pin of the motor of the fader

Step 10 — replace transistor



- Replace transistors by new ones
- 2SB1181
- 2SD1733
- they are hard to find as the are being obsolete

Step 11 — Add more reliability



- An idea from web forum from a Yamaha Technician that propose to add 4X 1N4148 diode by fader to protect the transistor. as free wheel
- add diode between base and collector as show here

To reassemble your device follow the following instructions in reverse order.