



# Yamaha NS-AW190BL Rear Casing Replacement

This guide will demonstrate the proper way to replace the Yamaha NS-AW190BL rear casing in order to correct any mount issues.

Written By: Nick Ruiz



---

## INTRODUCTION

Use this guide to replace the Yamaha NS-AW190BL rear casing.



### TOOLS:

- [Metal Spudger](#) (1)
  - [iFixit Opening Tools](#) (1)
-

## Step 1 — Rear Casing



- Remove the six Phillips Head 1.2mm screws on the front side of the speaker.

## Step 2



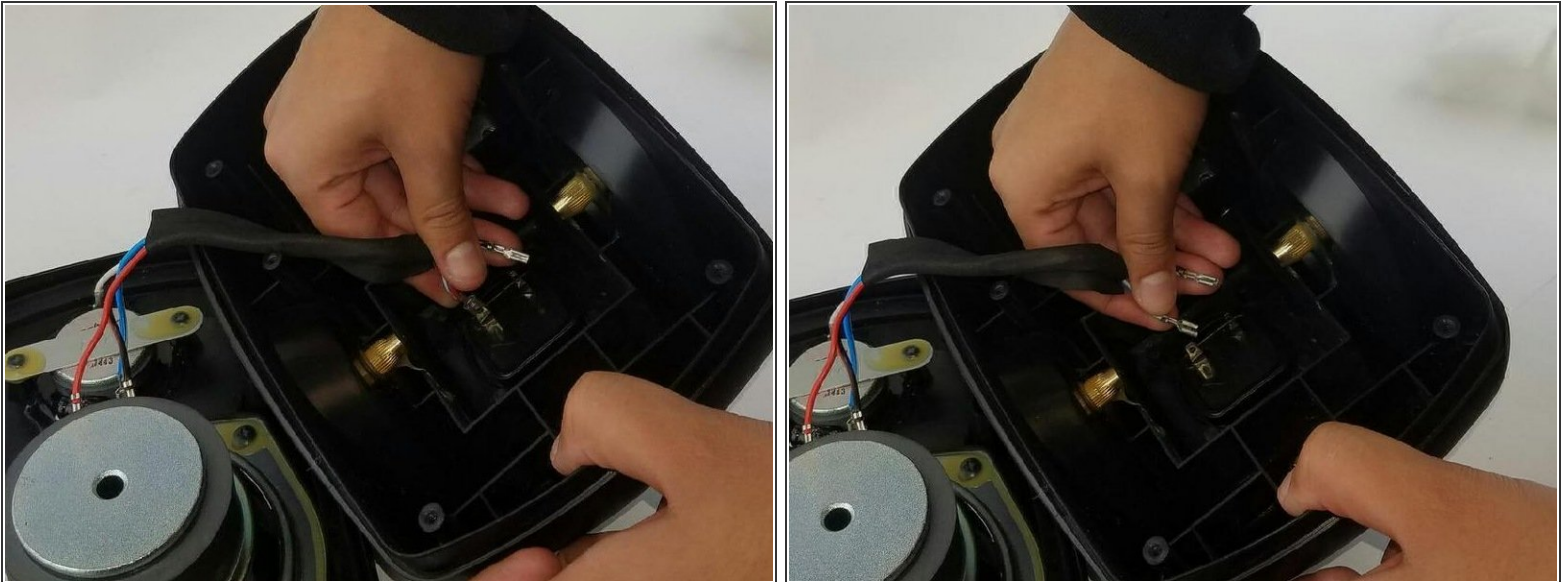
- Crack open both parts of the casing carefully.
- Using a plastic opening tool, wedge open the bottom of the speaker to separate the two parts of the speaker.

### Step 3



- Remove the cooling foam.
- Use a metal spudger to push the tab in on the red wire.
- Repeat the process for the blue wire.

### Step 4



- The blue wire can now be removed from its connector.
- Remove the red wire to free the rear casing.

To reassemble your device, follow these instructions in reverse order.

This document was generated on 2019-09-18 10:16:42 PM (MST).

