



Yamaha YPG-225 Speaker Replacement

Use this guide to replace a broken Yamaha YPG-225 keyboard speaker.

Written By: Lonnie Bissmeyer



INTRODUCTION

Learn to remove and replace a speaker for your keyboard with this guide. The process is fairly simple and mostly requires the removal of screws.

TOOLS:

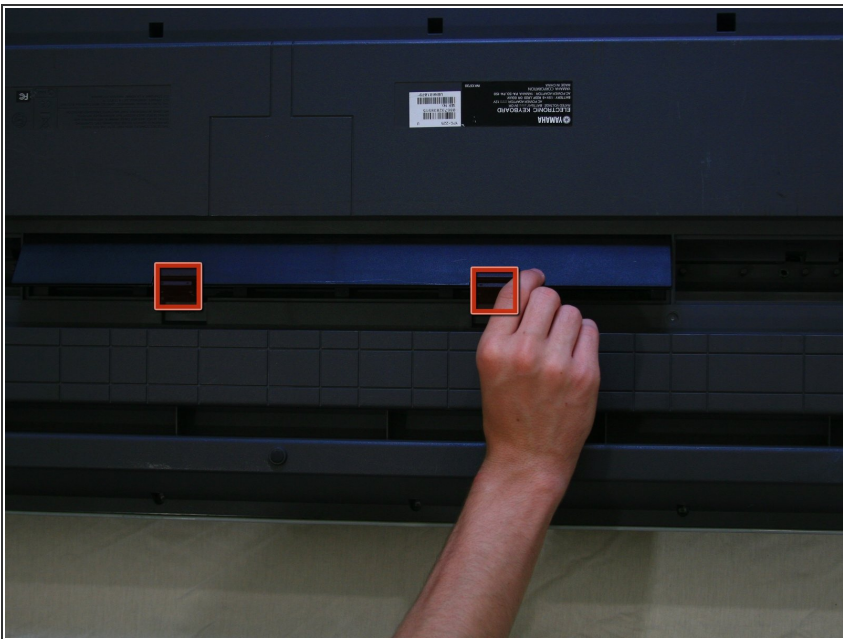
- [Phillips #2 Screwdriver](#) (1)
 - [Magnetic Pickup Tool](#) (1)
 - [iFixit Tech Knife](#) (1)
-

Step 1 — Batteries



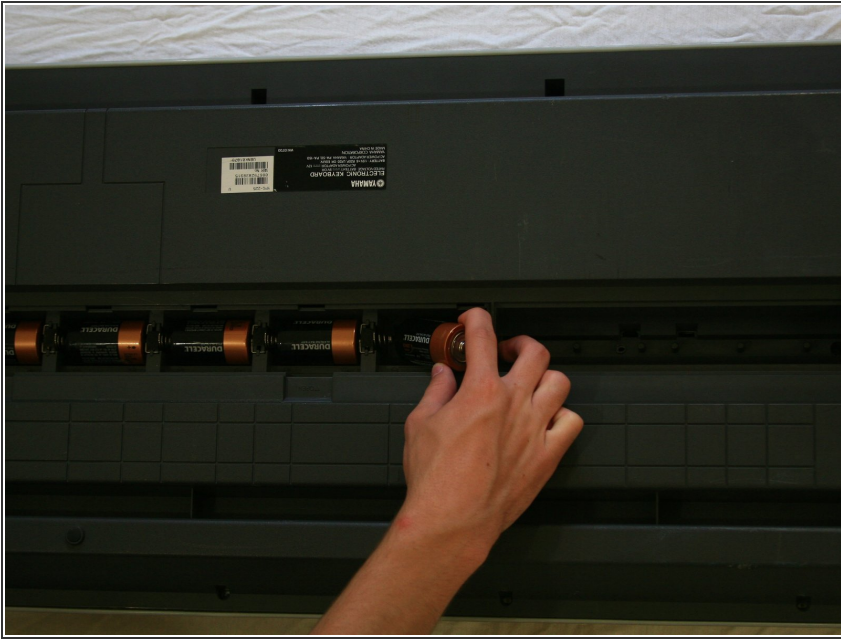
- Turn the keyboard over so that the keys are facing the ground.

Step 2



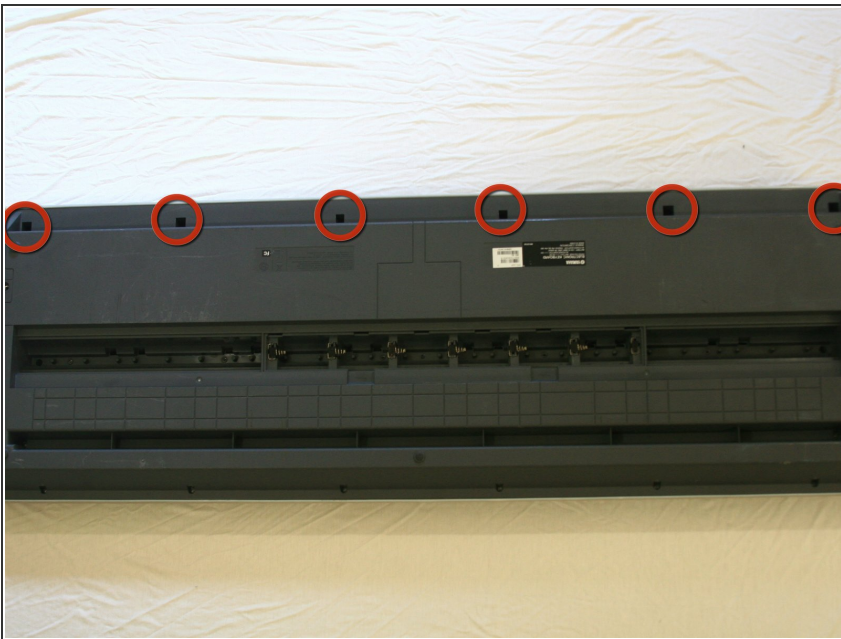
- Pop the tabs on the battery casing and remove it from the back plate.

Step 3



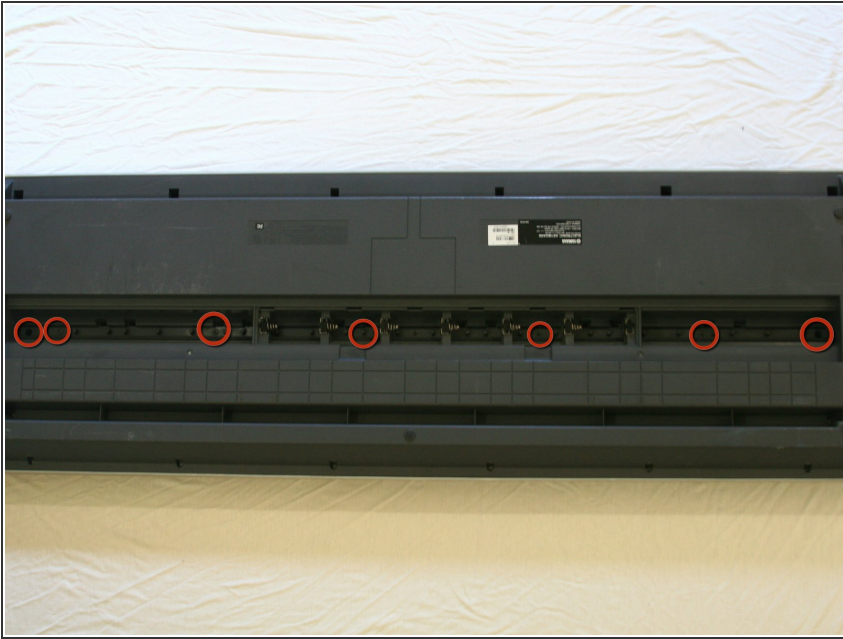
- Locate the six batteries and remove them from the battery cavity.

Step 4 — Faceplate



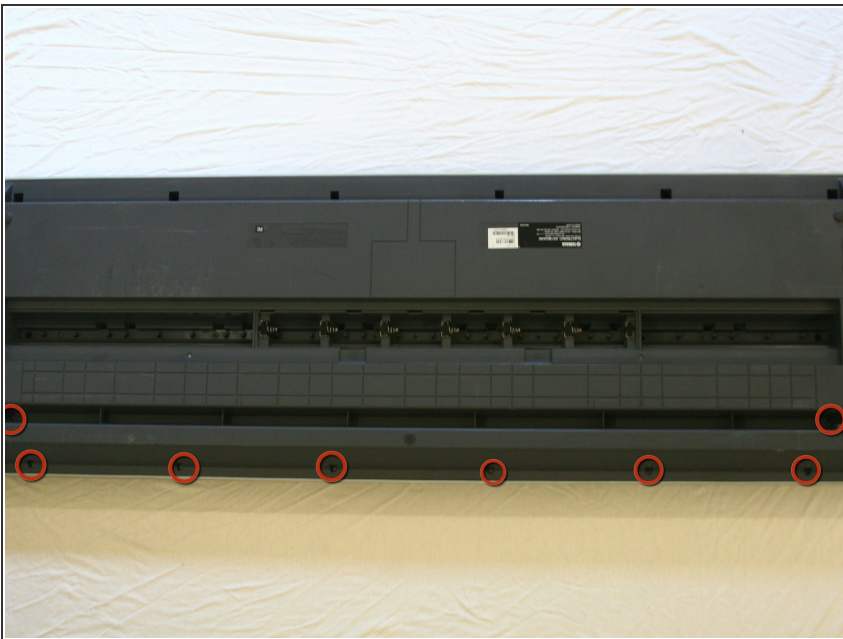
- Remove the six 10mm screws at the top of the backplate.

Step 5



- Remove the seven 12mm screws in the middle of the back plate.

Step 6



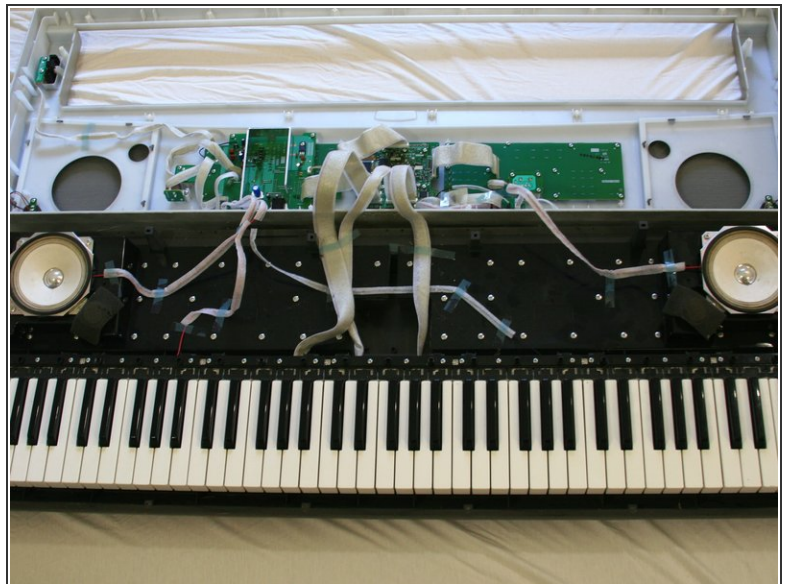
- Remove the eight 10mm screws from the side and the bottom of the back plate.

Step 7



- ⚠ As the face plate is no longer connected to the body of the keyboard, be careful to not drop the body when performing this step.
- Flip over the keyboard.

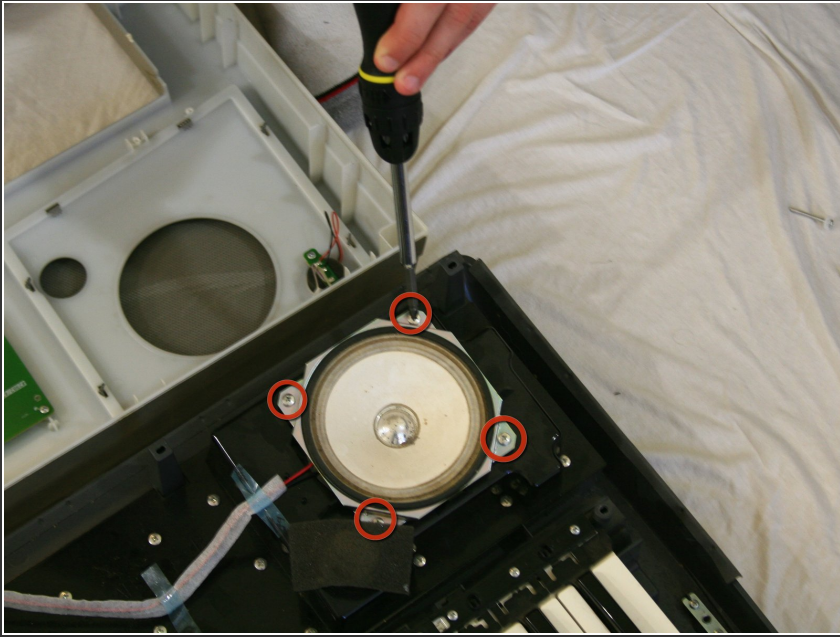
Step 8



- Lifting from the front and the back of the face plate equally, pull the face plate up and then back, away from the keyboard.

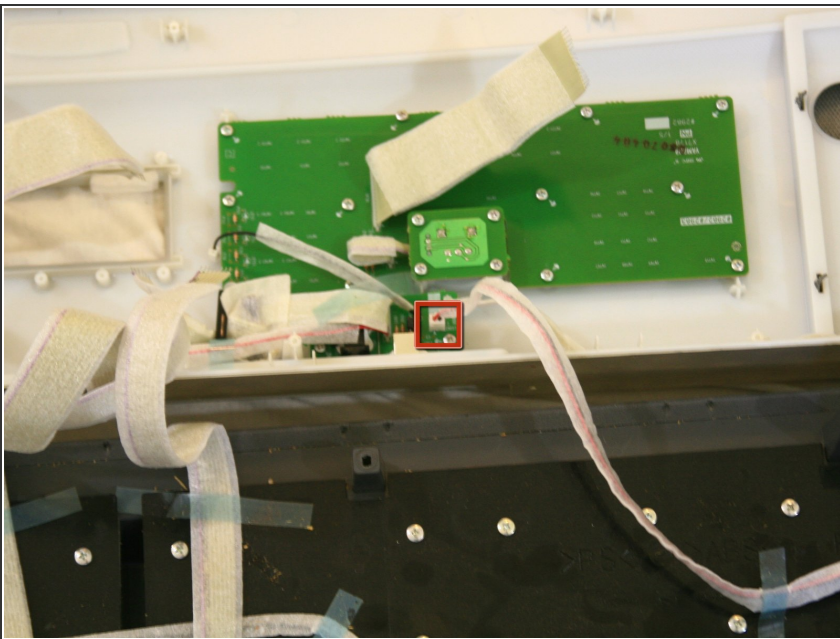
⚠ Be careful when removing the face plate. There are wires attached.

Step 9 — Speaker



- Locate the speaker and remove the four 10mm screws in the corners of the speaker.

Step 10



- Unplug the speaker's black and red wires from the small circuit board.
- ⚠ Do not be afraid to use a little force to get the plug out, but take care not to pull the wires from the plug.

Step 11



- Remove the translucent blue tape that holds the speaker wires to the keyboard.

To reassemble your device, follow these instructions in reverse order.