



Yuneec Breeze 4K Camera Replacement

This guide will teach you how to replace the Camera on the Yuneec Breeze 4K Drone.

Written By: Wes Knutson



INTRODUCTION

Is the camera on your Yuneec Breeze 4K Drone not recording? Consider using this guide to replace the camera in your drone.



TOOLS:

- [Phillips PH000 Screwdriver](#) (1)
- [iFixit Opening Tools](#) (1)
- [Anti-Static Wrist Strap](#) (1)



PARTS:

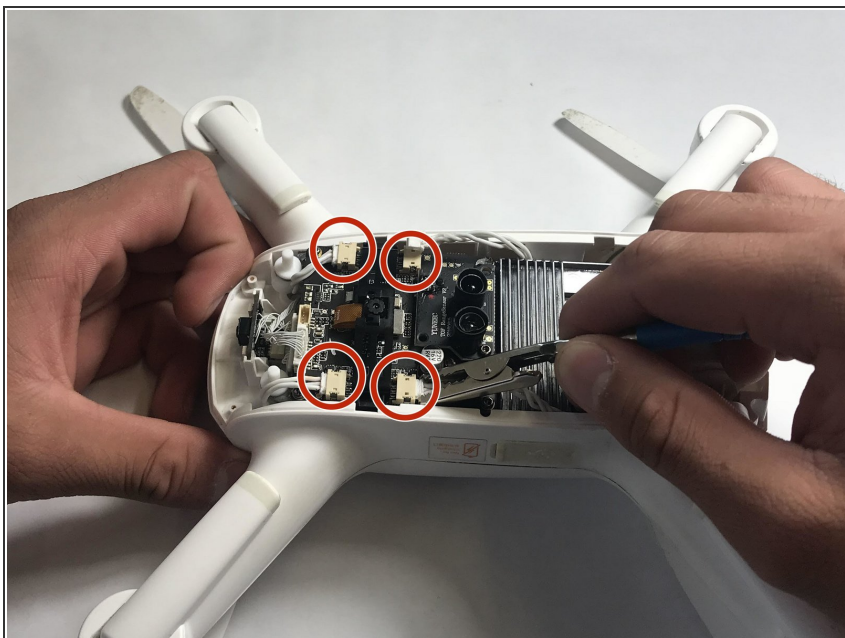
- [Yuneec Breeze 4K replacement camera](#) (1)

Step 1 — Camera



- Before you begin start by putting on a ESD wrist strap to prevent ESD damage and remove the battery.
- Once the battery is taken out, flip over the drone so that the cameras are now facing up.

Step 2



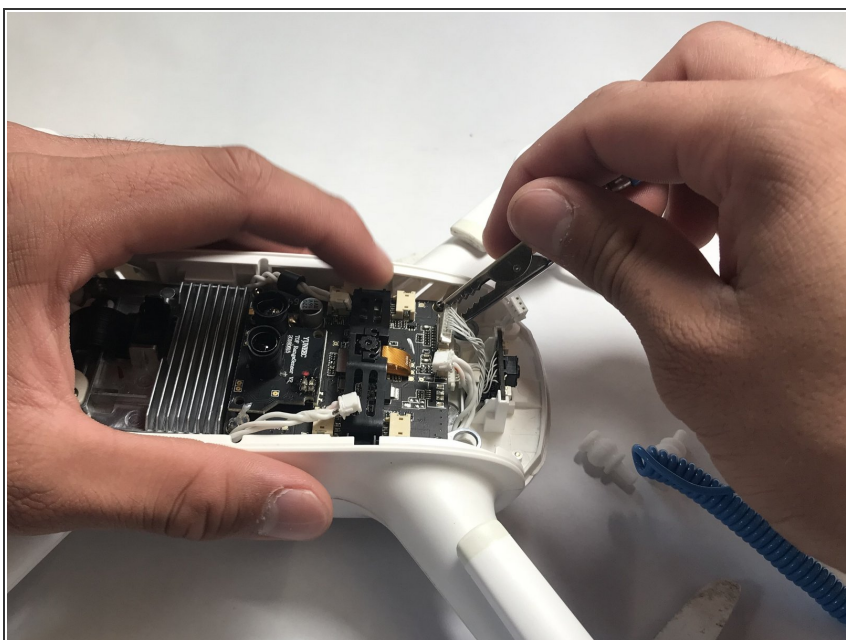
- Using small pliers grip the connector of the wire and pull it out slowly.

Step 3



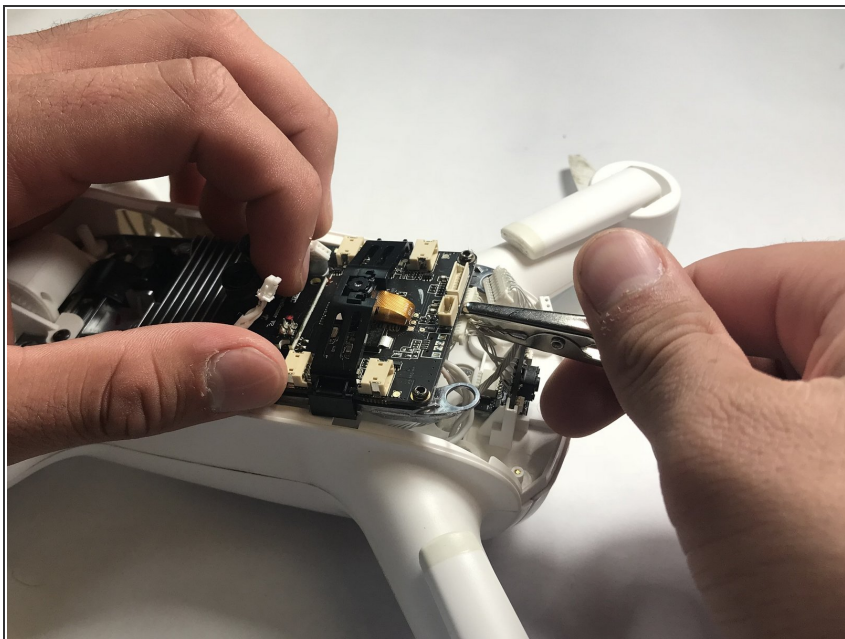
- Remove the four white rubber dampeners located in each corner of the frame that hold the it in place.

Step 4



- Unplug the two vertical plugs located in the rear of the M7 board.

Step 5



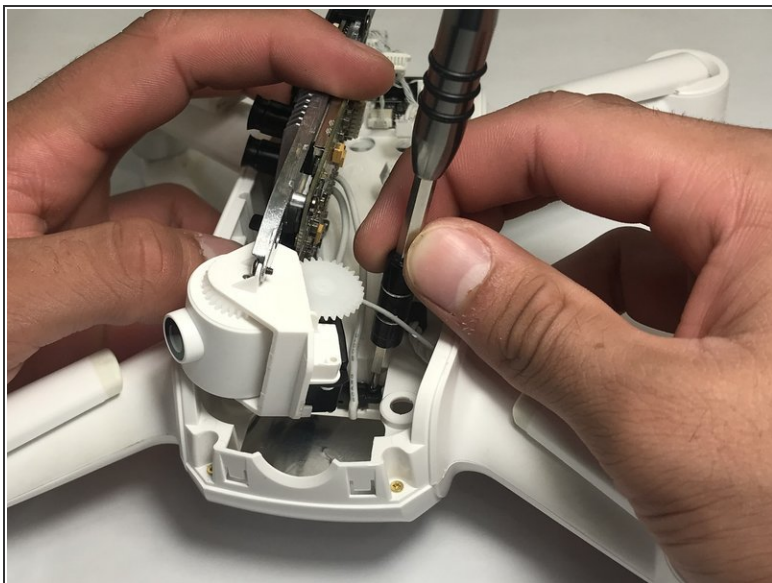
- Slightly lift the M7 board to remove the two plugs located under the rear of the board.

Step 6



- Once all plugs on top of the M7 board are disconnected, carefully lift the M7 board onto its side and remove all plugs on the bottom.

Step 7



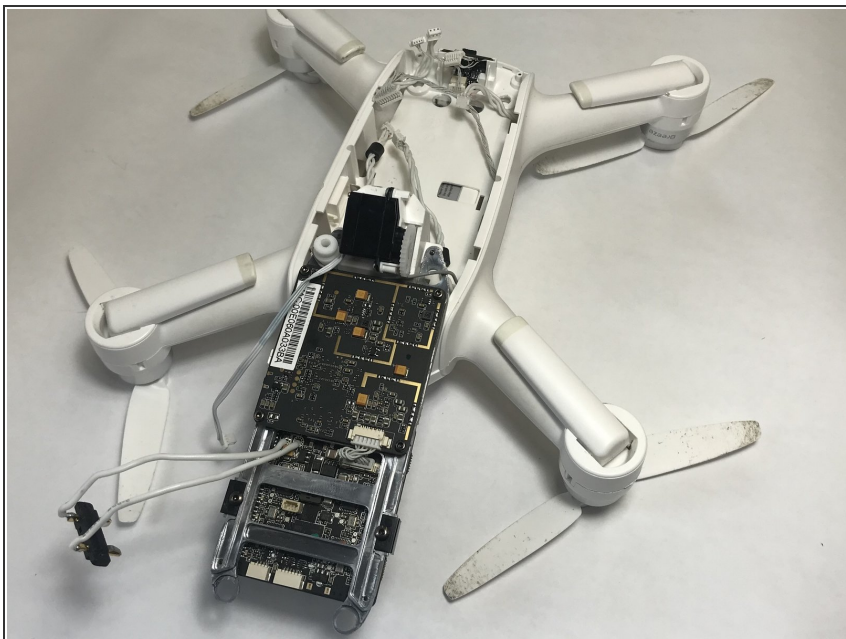
- Tilt the M7 board onto its side. Using the Phillips #00 screwdriver remove the two black screws connected to the large black two pronged input.

Step 8



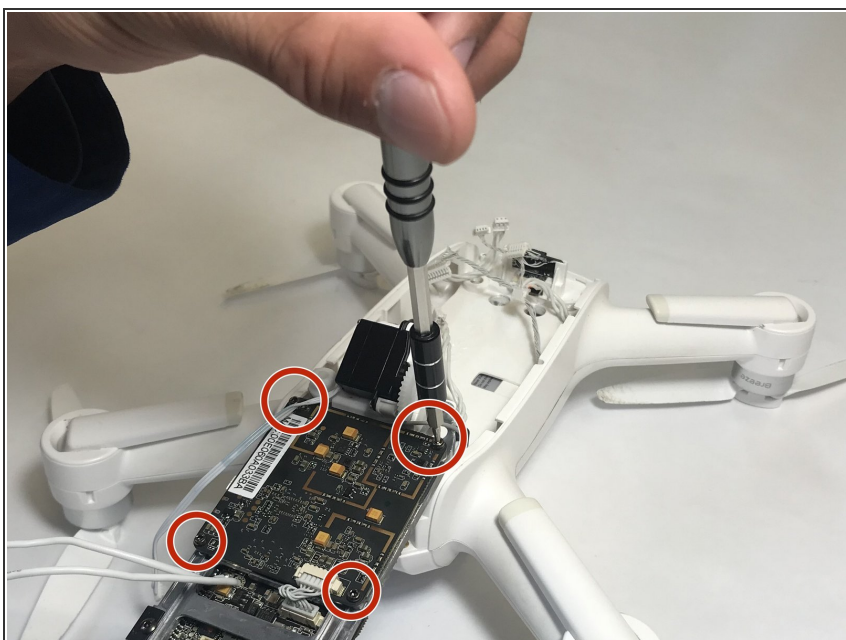
- Using a pair of pliers pull apart the battery connector.

Step 9



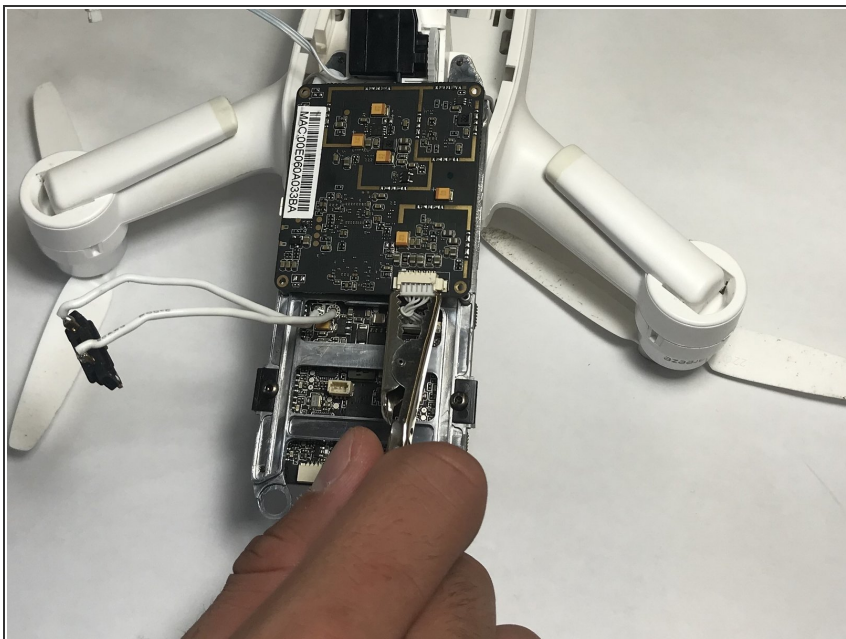
- Flip over the entire frame along with the M7 board and the A9 board.

Step 10



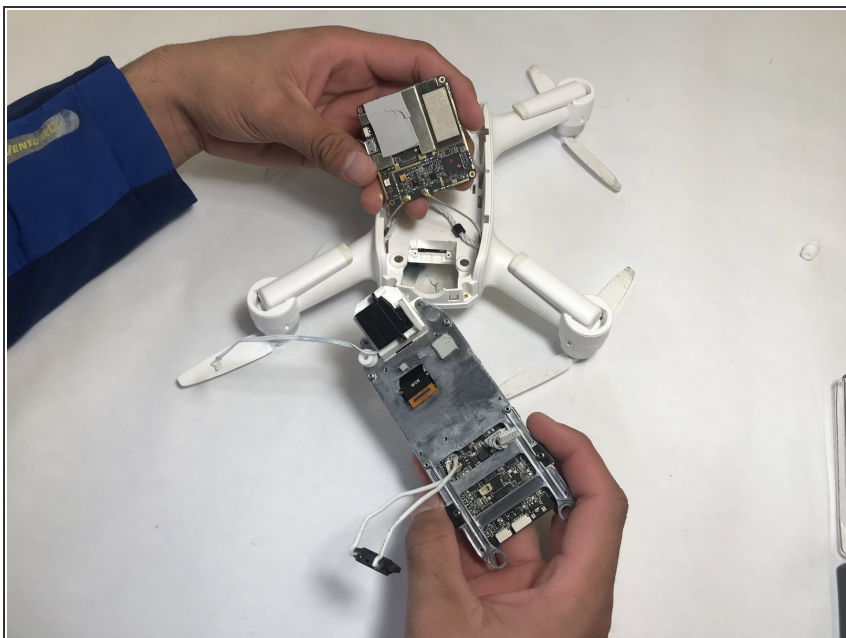
- There will be 4 screws that hold the A9 board together. Using a H1.5 Alan bit unscrew those bolts to take the A9 board apart.

Step 11



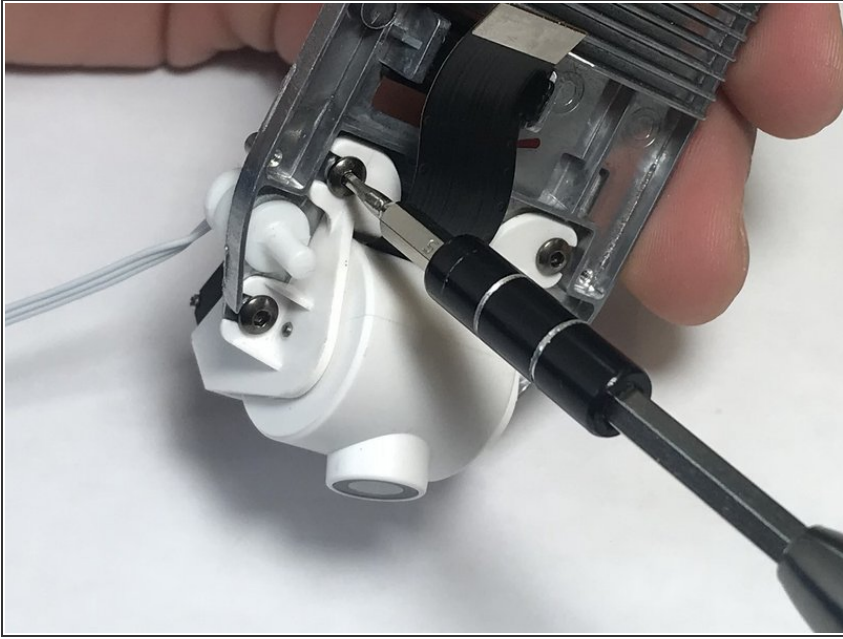
- Unplug the only wire that is connected to the A9 board.

Step 12



- Pull apart the frame from the other board. The camera will be connected by a plug and it should pull out easily.

Step 13



- Unscrew the four screws that are holding the camera to the frame.

To reassemble your device, follow these instructions in reverse order.