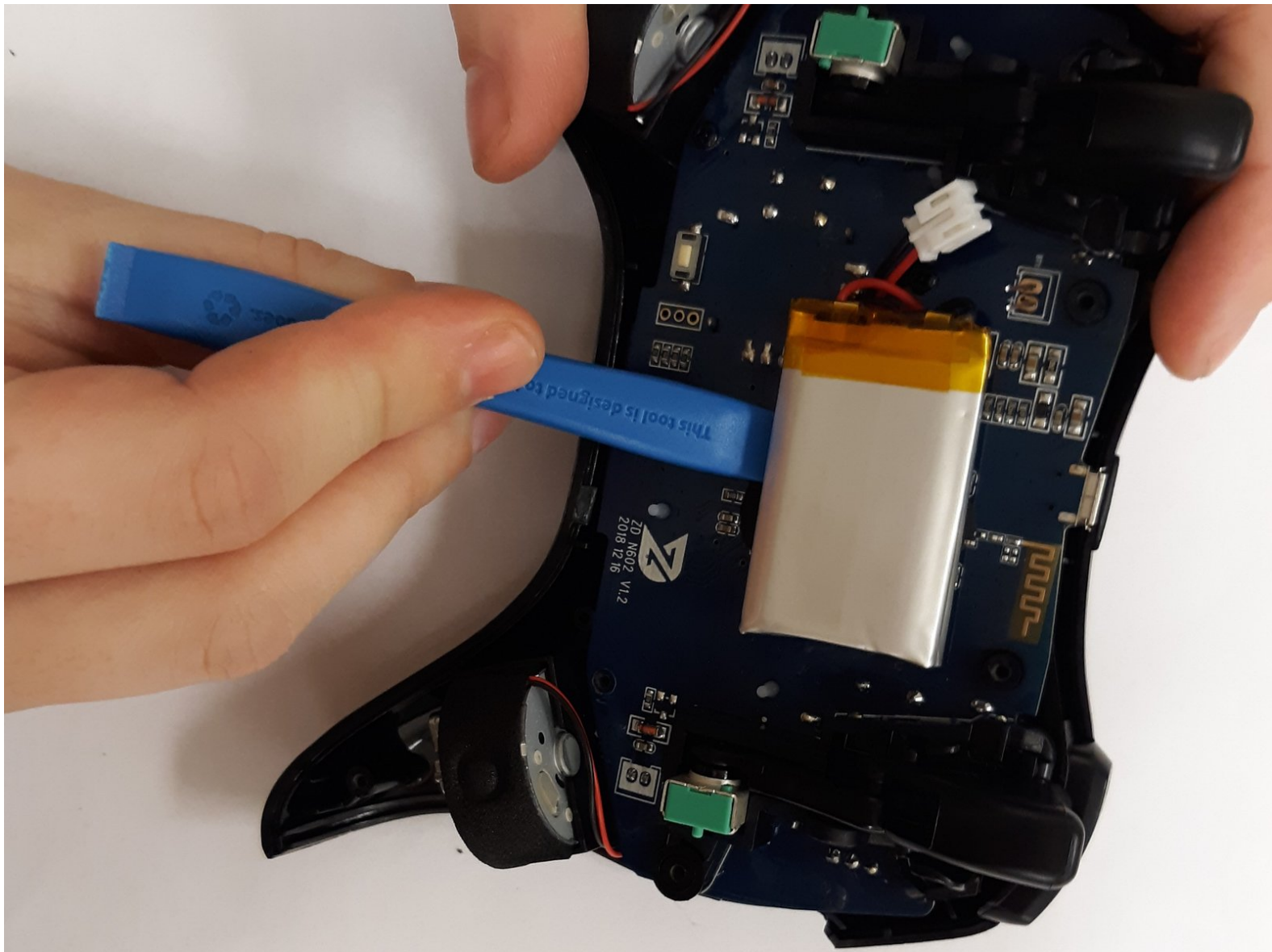




# ZD-N Plus Wireless Controller Battery Replacement

This guide will assist in the replacement of the internal battery for the ZD-N Plus Wireless Controller.

Written By: Devin Matos



This document was generated on 2020-02-27 06:31:38 AM (MST).

## INTRODUCTION

This guide is designed to explain how to replace the battery in the ZD-N208 Plus Wireless Controller. The Z-DN Plus contains a rechargeable lithium polymer battery, which generally can be found online or in electronic stores. They retail for around \$20 USD. The guide will outline how to disconnect the battery from the controller in order to replace it with a new battery. Note, if you are having trouble starting your controller it is suggested that you attempt other troubleshooting options to find potential issues before replacing the battery, as your troubles may not be caused by a broken battery.



### TOOLS:

- [JIS #00 Screwdriver](#) (1)
  - [iFixit Opening Tools](#) (1)
-

## Step 1 — Back Panel



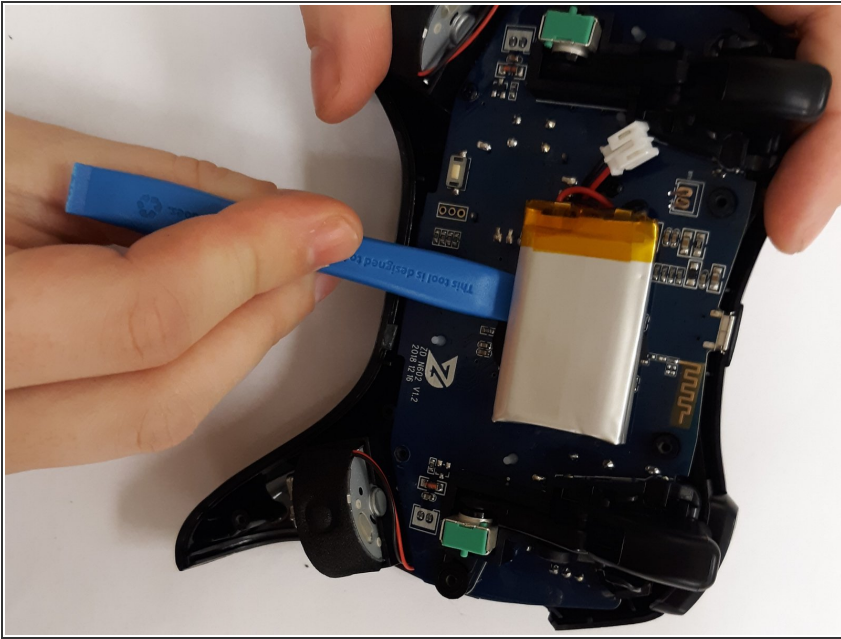
- Remove the seven 12mm JIS #00 screws that hold the back panel in place.

## Step 2



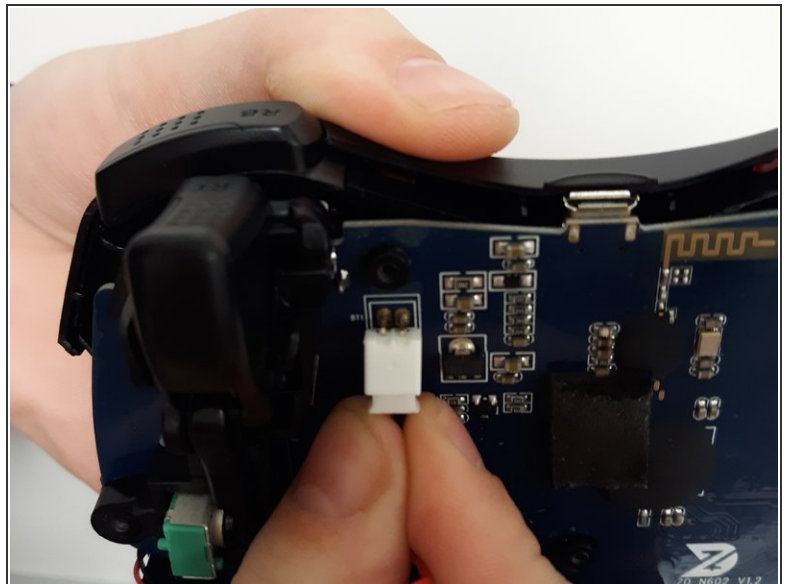
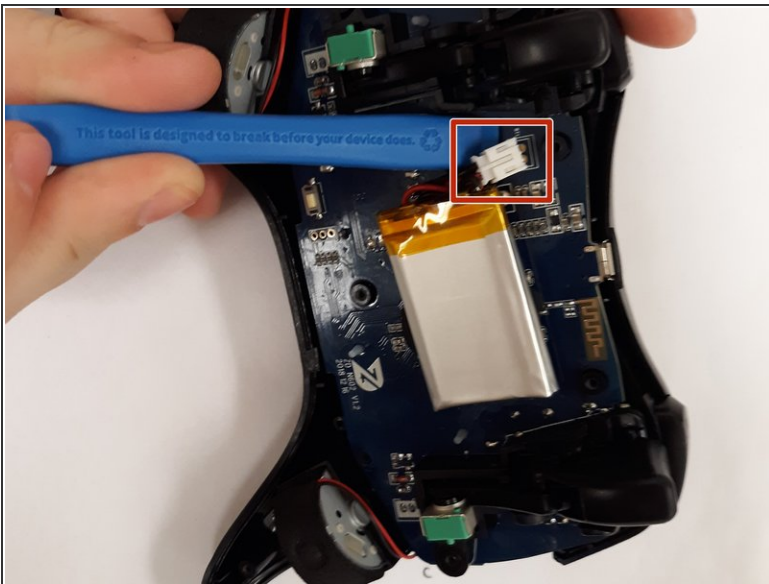
- Lift up on the back panel of the ZD-N Plus to remove it from the rest of the controller.

## Step 3 — Battery



- Use an opening tool to pry the battery from its original position.
- ⓘ The battery is glued on, so this may take some effort.

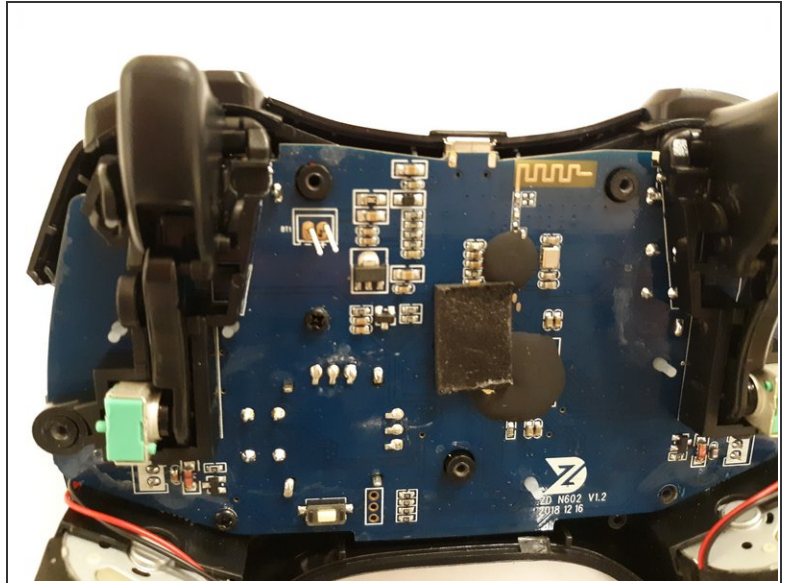
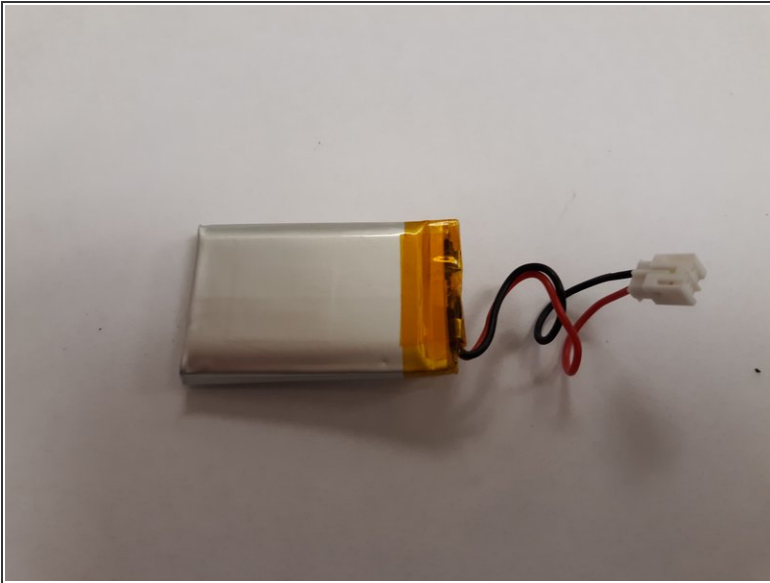
## Step 4



- Use an opening tool to pry the connector away from the two metallic prongs.
- ⓘ The parts are built to stay together, so this may take some effort.
- ⚠ Be careful to not warp the prongs in the process.



## Step 5



- Remove the battery from the controller.

To reassemble your device, follow these instructions in reverse order.