



ZD-N Plus Wireless Controller LB and RB Buttons Replacement

This guide is created to explain how to replace the LB and RB buttons on your ZD-N208 Plus Wireless Controller.

Written By: Nick Aproff



INTRODUCTION

This guide is created to explain how to replace the LB and RB buttons on your ZD-N208 Plus Wireless Controller. Bumpers can be found on eBay for \$3.00.



TOOLS:

- [JIS #00 Screwdriver](#) (1)
 - [iFixit Opening Tools](#) (1)
-

Step 1 — Back Panel



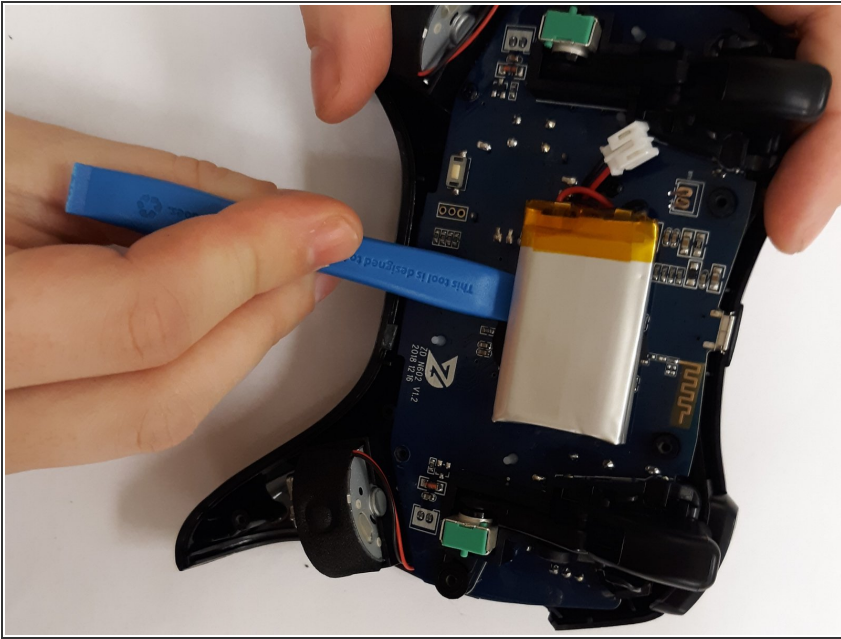
- Remove the seven 12mm JIS #00 screws that hold the back panel in place.

Step 2



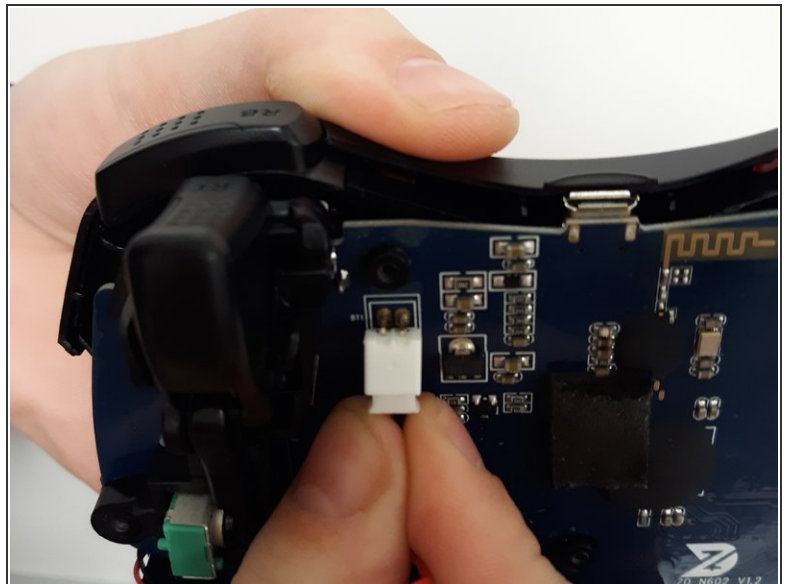
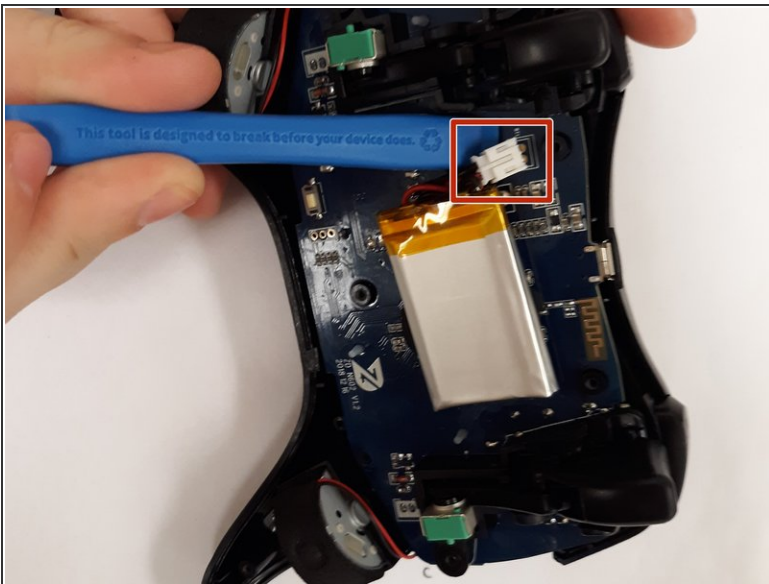
- Lift up on the back panel of the ZD-N Plus to remove it from the rest of the controller.

Step 3 — Battery



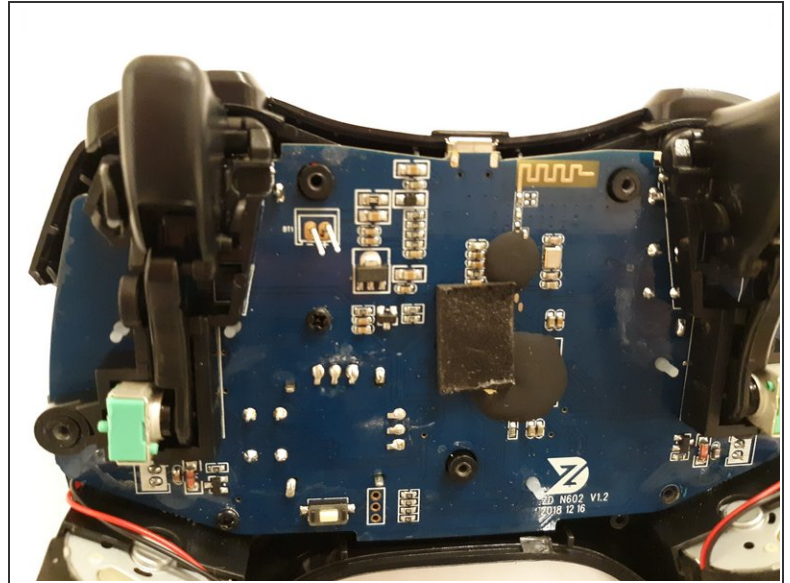
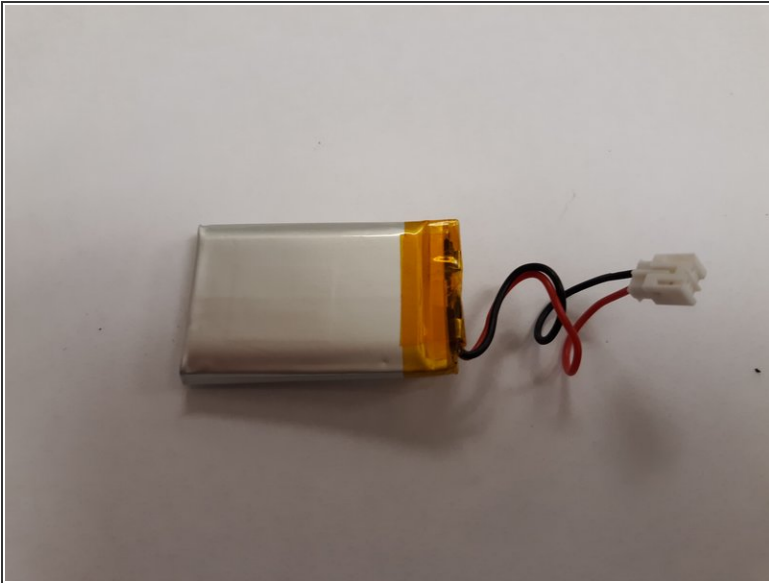
- Use an opening tool to pry the battery from its original position.
- ⓘ The battery is glued on, so this may take some effort.

Step 4



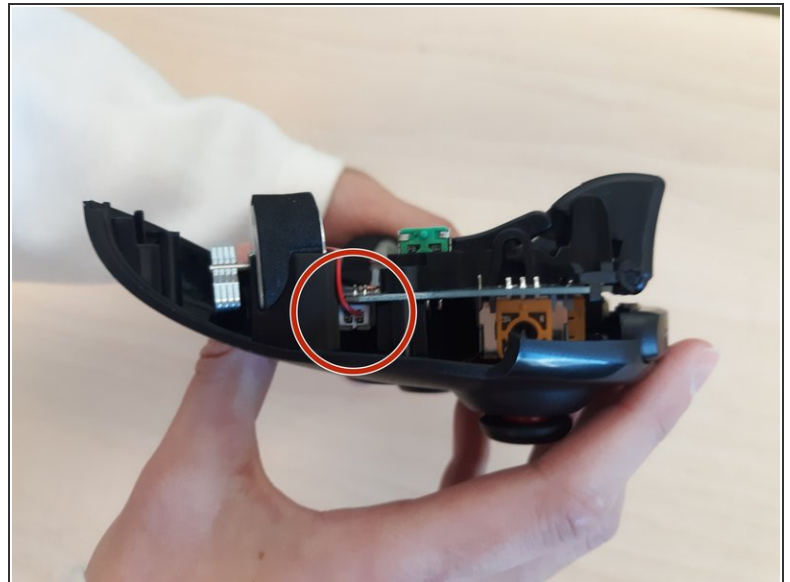
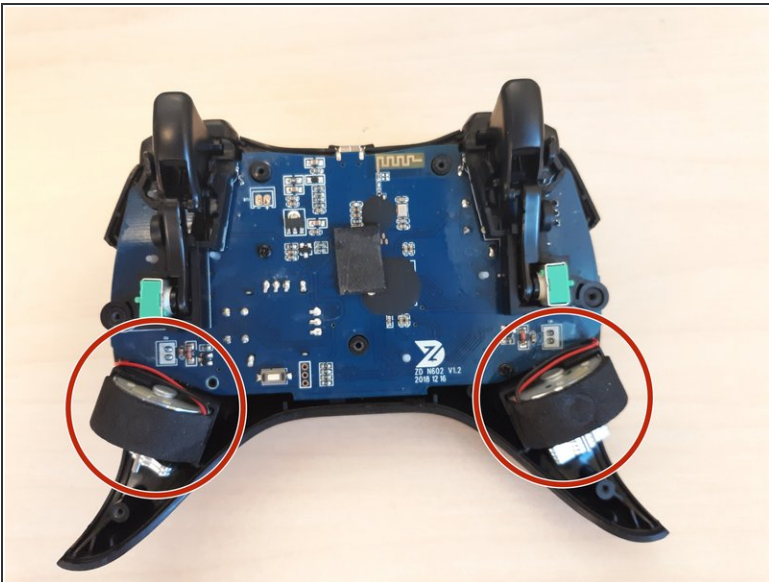
- Use an opening tool to pry the connector away from the two metallic prongs.
- ⓘ The parts are built to stay together, so this may take some effort.
- ⚠ Be careful to not warp the prongs in the process.

Step 5



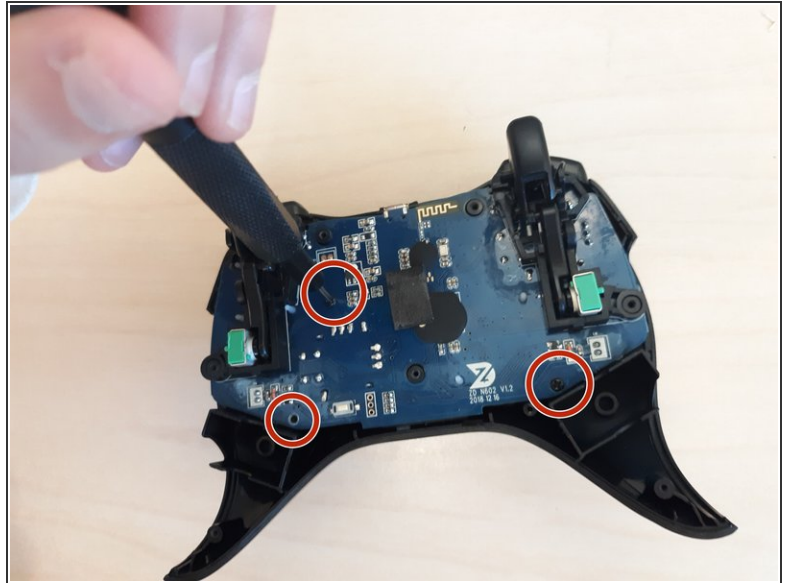
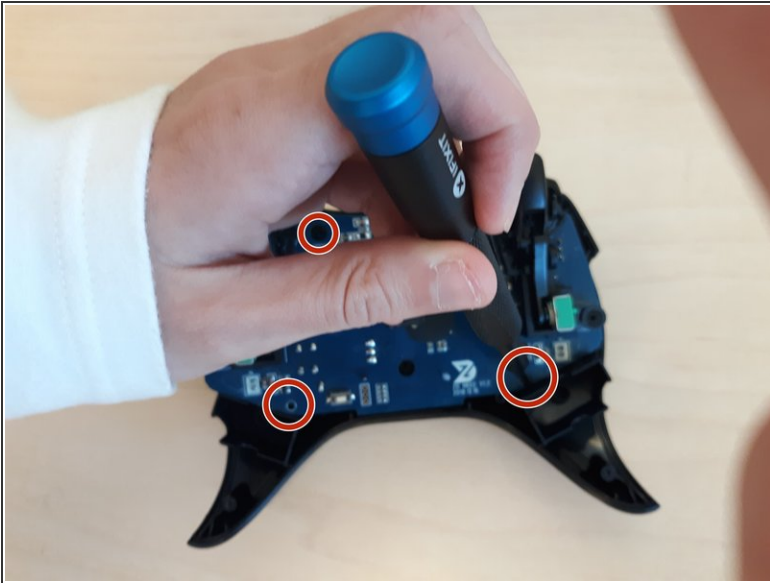
- Remove the battery from the controller.

Step 6 — Rumble Motor



- Remove the electrical connector attaching each rumble motor to the controller.
- Lift up on the circular section of the rumble to remove it from the controller.

Step 7 — Motherboard



- Remove the three 1.2mm JIS #00 screws that hold the motherboard in place.

Step 8



- Lift the motherboard out of the controller.

Step 9 — LB and RB Buttons



- The LB/RB buttons can be easily pulled from the top of the controller.

To reassemble your device, follow these instructions in reverse order.