



ZTE Blade E Battery Replacement

This guide will accomplish the necessary tools of replacing a worn out battery.

Written By: Alan Toussaint





TOOLS:

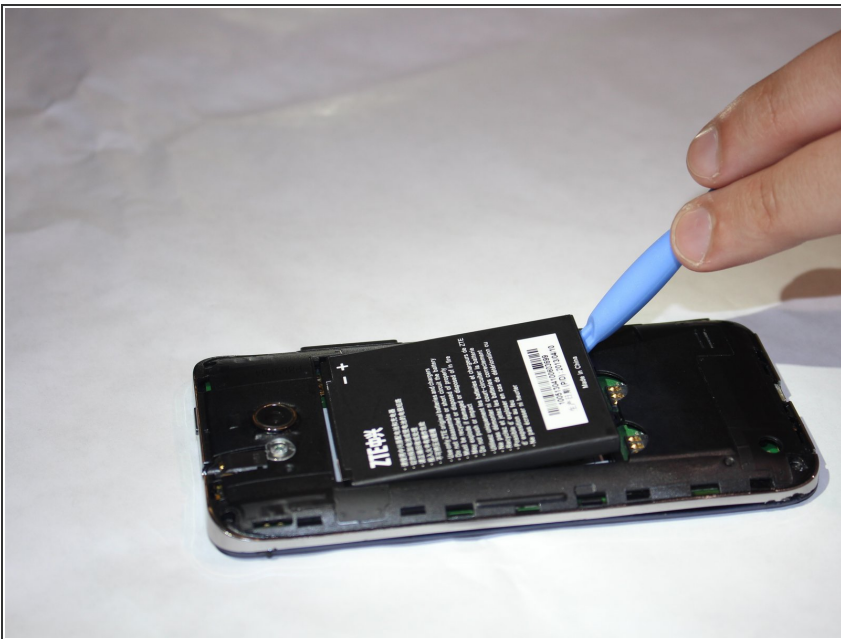
- [Spudger](#) (1)
-

Step 1 — Removing the cover



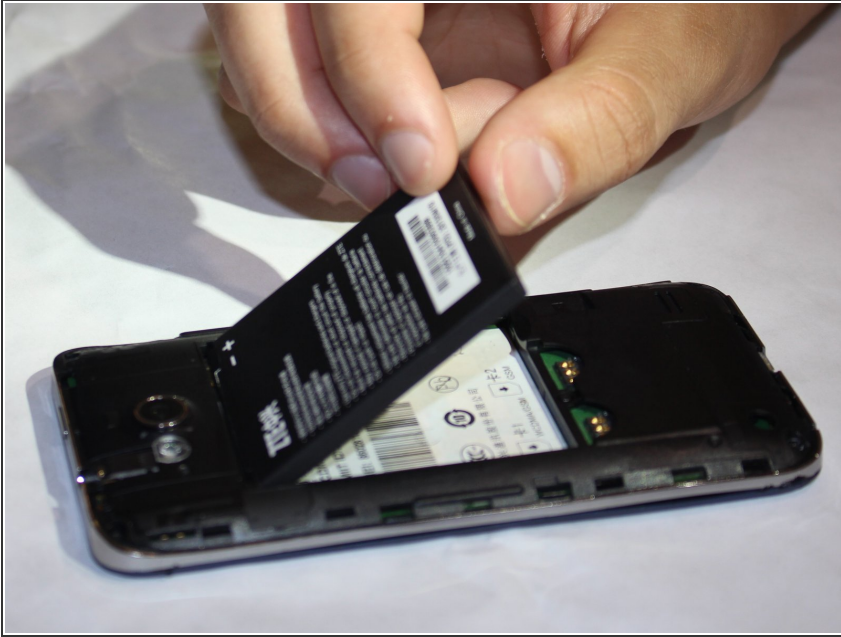
- Take a spudger and remove the back panel.

Step 2 — Removal



- Carefully remove the battery with a spudger.

Step 3 — New battery



- Take the new battery and place it into the slot. The phone should operate normally.

To reassemble your device, follow these instructions in reverse order.