



ZTE Blade E Motherboard Replacement

This guide will show you how to remove and replace the motherboard of your phone.

Written By: Lilia Johnson





TOOLS:

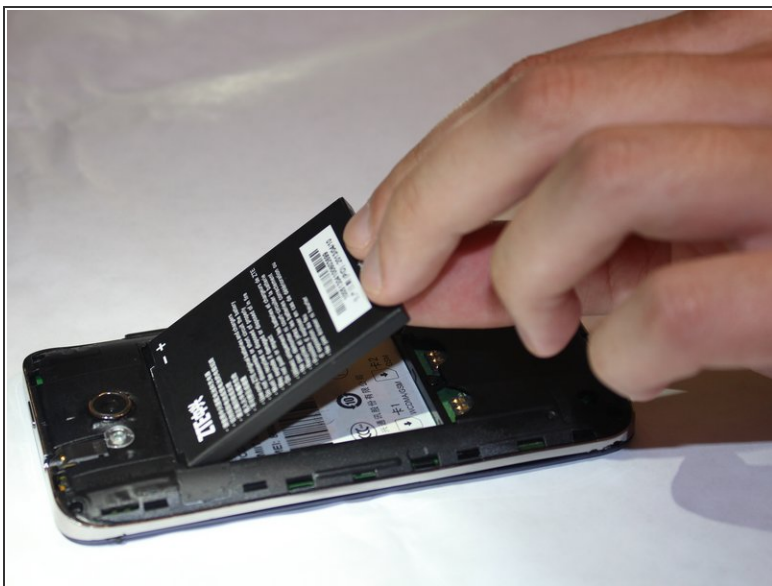
- [Spudger](#) (1)
- [Tweezers](#) (1)
- [Phillips #00 Screwdriver](#) (1)

Step 1 — Motherboard



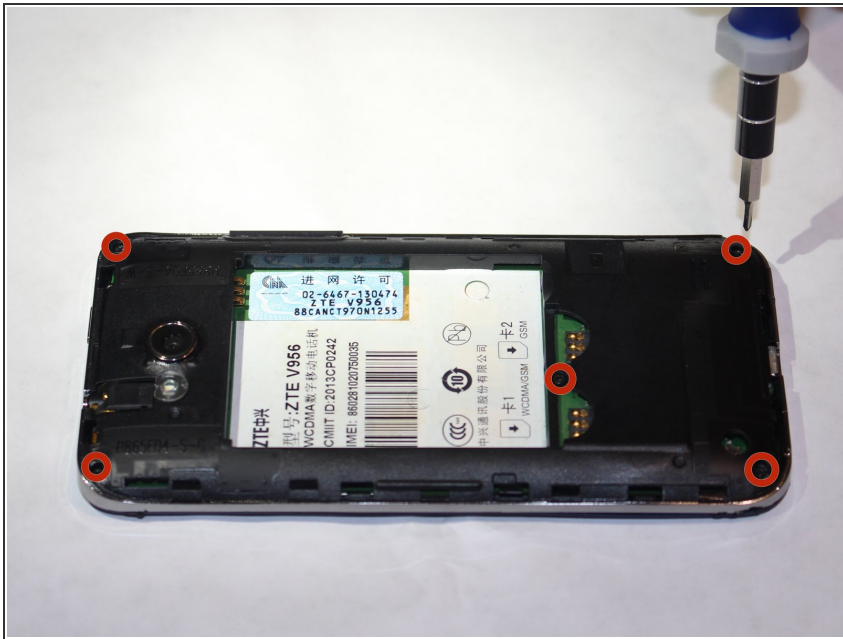
- Using a spudger, remove the back panel of the phone.

Step 2



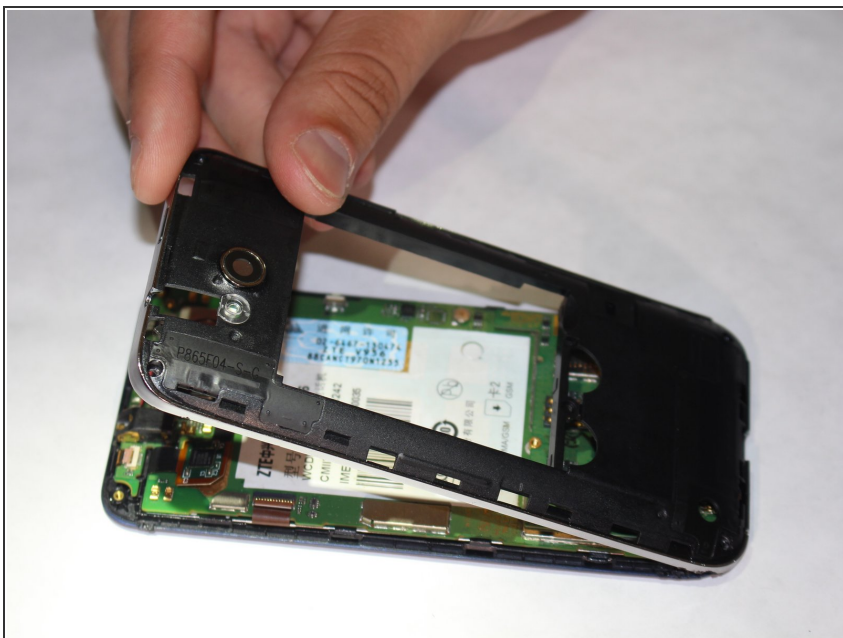
- Remove the battery and SD card from the phone.

Step 3



- Remove the five 4mm Philips #00 screws, circled in red, holding the the back down.

Step 4



- Remove the back piece, exposing the motherboard.

Step 5



- Flip up the three small tan clips holding the ribbons in place.

Step 6



- Gently slide each of the three ribbons out of the motherboard.

Step 7



- Slide the motherboard off of the ribbons detaching it from the front of the phone.

To reassemble your device, follow these instructions in reverse order.