



# ZTE Blade Spark Battery Replacement

ZTE Blade Spark Battery Replacement step-by-step guide.

Written By: Hung Vu



---

## INTRODUCTION

Follow this guide to replace the Battery for the ZTE Blade Spark. To get to this step please see [ZTE Blade Spark Disassembly Guide](#)

---

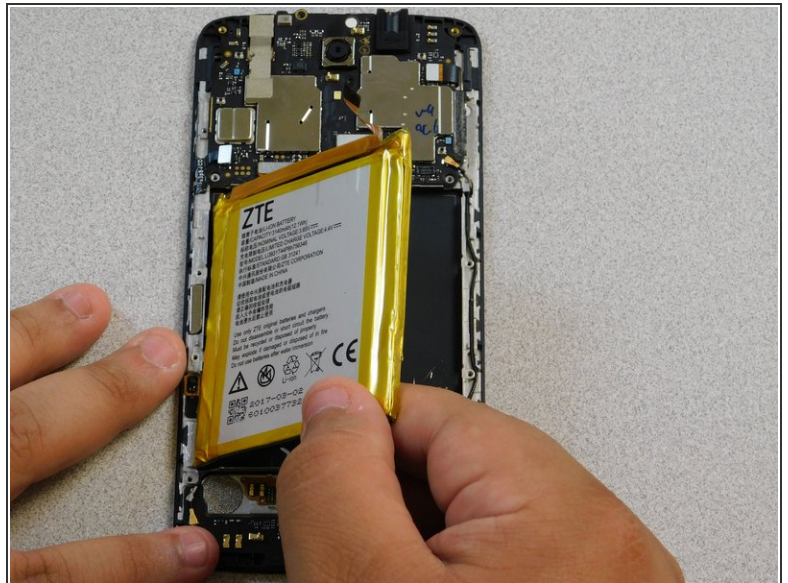


### TOOLS:

- [iFixit Pro Tech Toolkit](#) (1)
-



## Step 1 — Battery



- Remove the battery:
- Disconnect the battery's power connector from the device mainframe.
- Lift the battery from its slot and set aside.

## Step 2



- Install replacement battery:
- Attach the replacement battery by connecting its corresponding power connector to the device mainframe.
- Then, set the replacement battery properly in place as originally found.

To reassemble your device, follow the instructions on the ZTE Blade Spark Disassembly guide in reverse order.