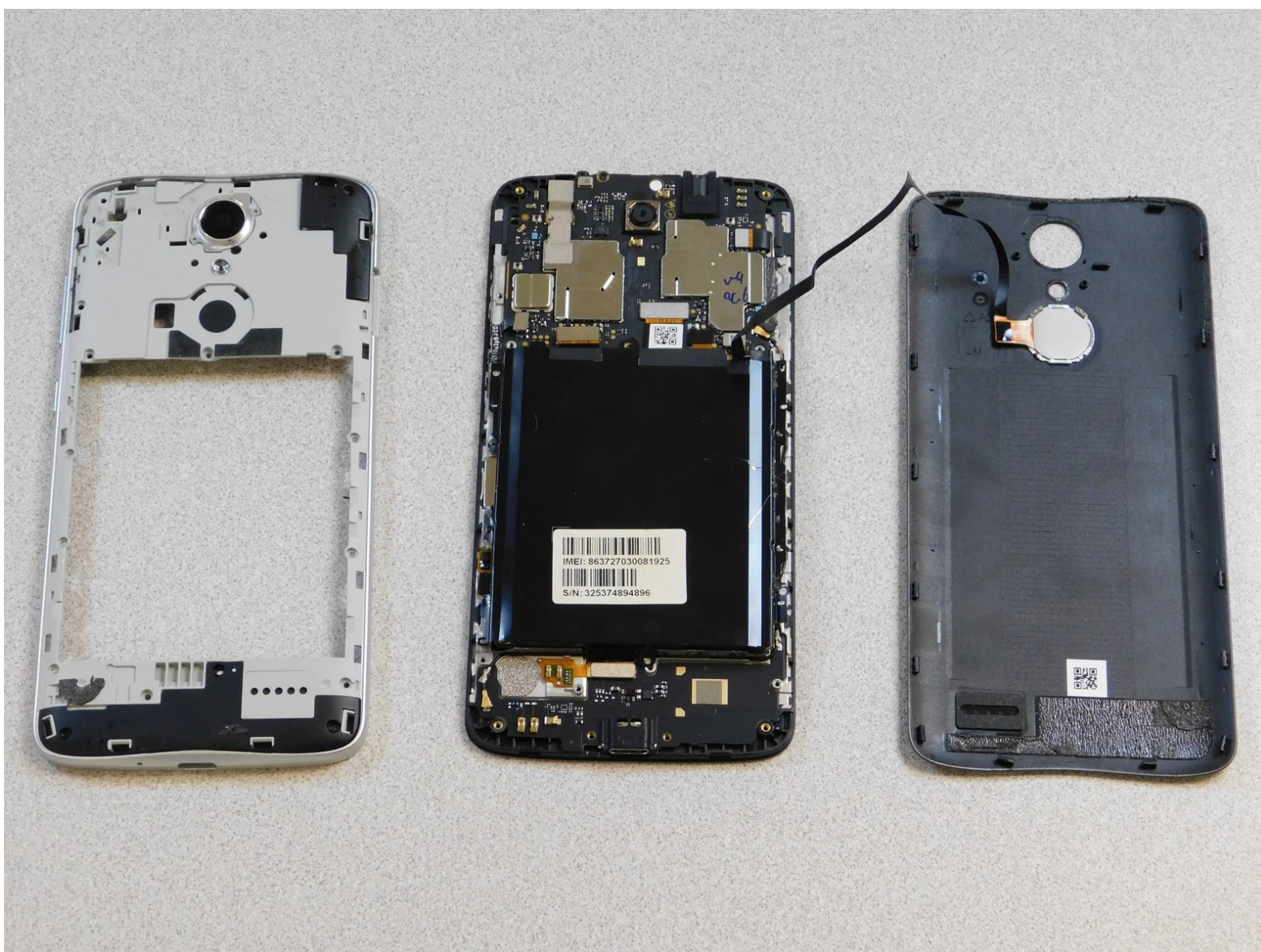




# ZTE Blade Spark Disassembly

ZTE Blade Spark step-by-step disassembly guide to reach device components for replacement/repair.

Written By: Hung Vu



# INTRODUCTION

Follow this guide to disassemble the ZTE Blade Spark device.

Through the disassembly process of the device, many replaceable device components will be removed, and therefore can be replaced.

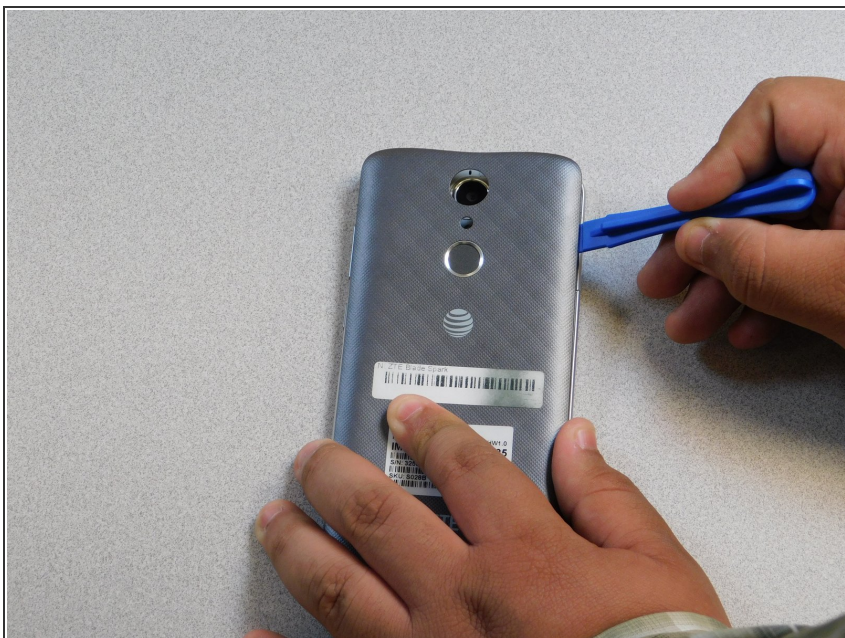


## Step 1 — ZTE Blade Spark Disassembly



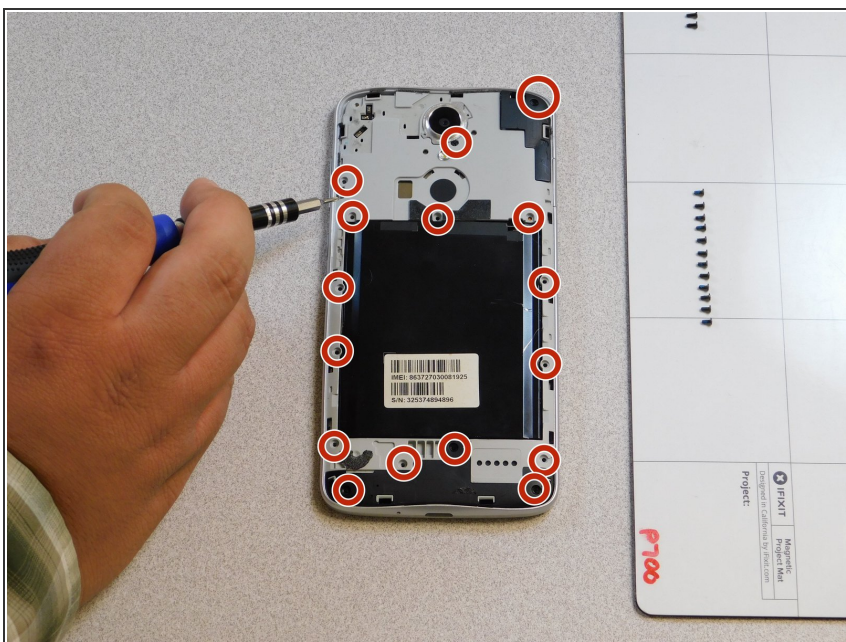
- First, apply heat evenly on the back cover using a heat sack to soften the adhesive.

## Step 2



- Now, carefully remove the back cover.

## Step 3



- Once opened, Locate and remove all exposed screws using a Phillips-Head screwdriver and set them aside.

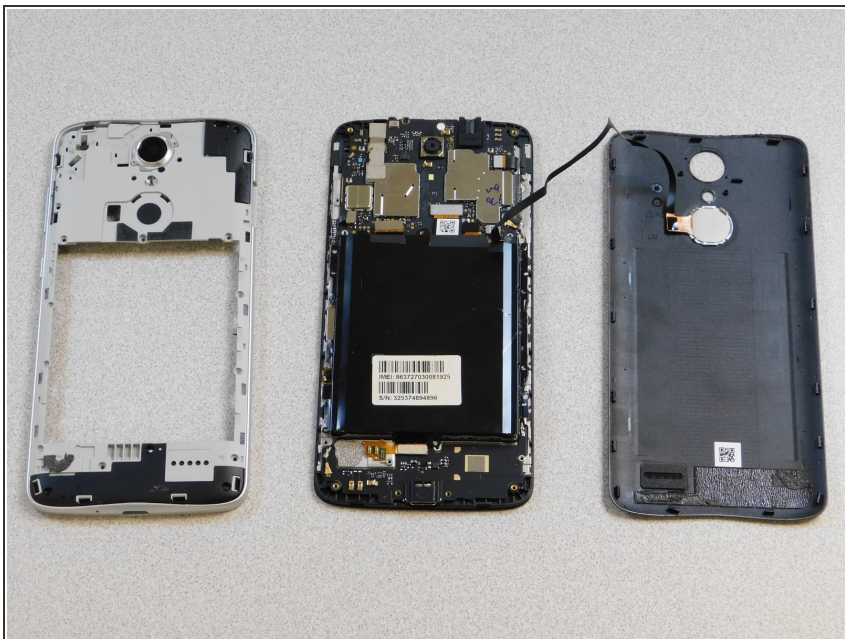
## Step 4



- To remove the inner white panel/cover, use a plastic opening tool to loosen from each side.

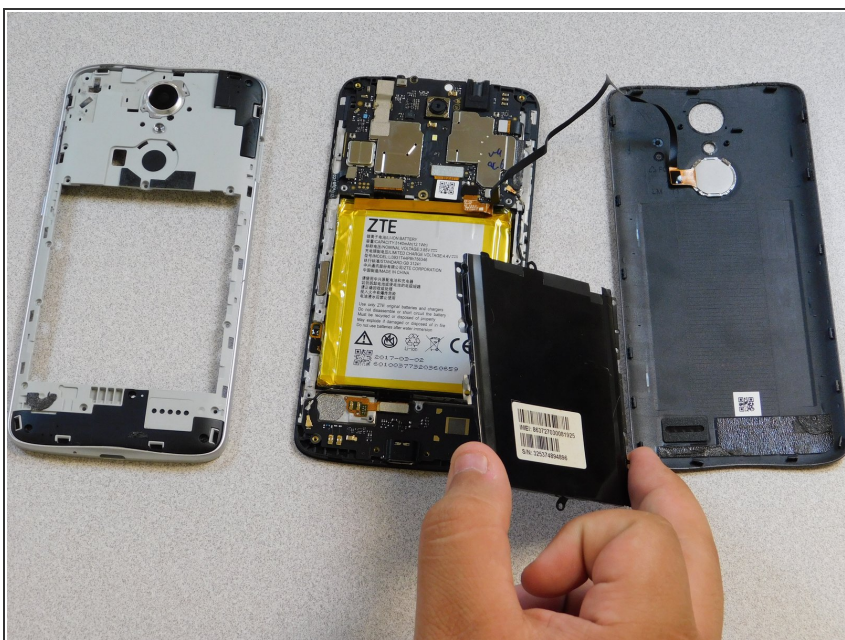


## Step 5



- After removing the white plastic panel, you should see a black metal battery cover.
- To remove the metal battery cover, remove the screws from the panel using a Phillips screwdriver if you have not yet done so.

## Step 6



- Then, simple lift to remove the metal battery cover.

## Step 7



- You have reached the Fingerprint Scanner, the device Battery, and Front Facing Camera.

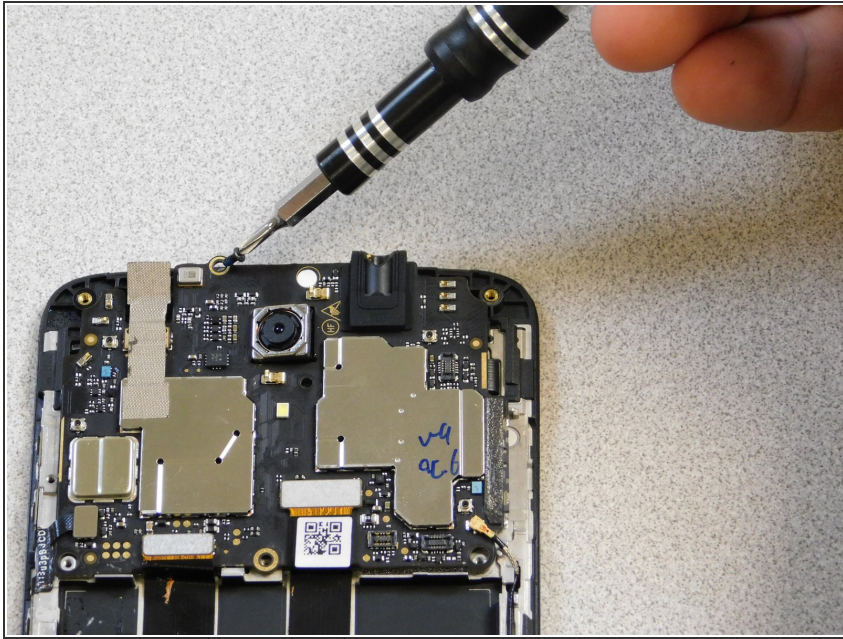
## Step 8



- Proceeding with disassembly, next up is the top chipset which the Rear Facing Camera is attached to.
- To detach the chipset and reach the Rear Camera, locate and disconnect five power connectors surrounding the top chipset (as shown in images).

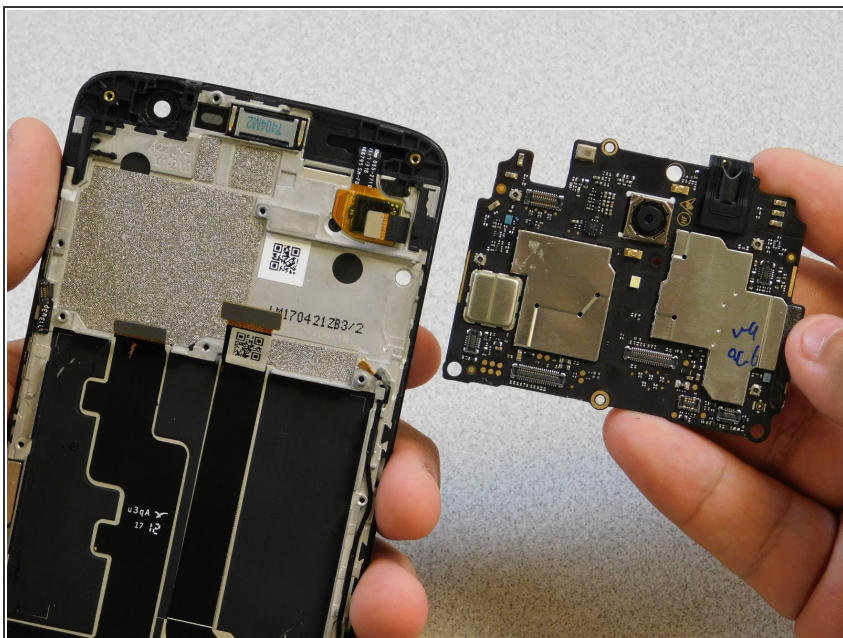


## Step 9



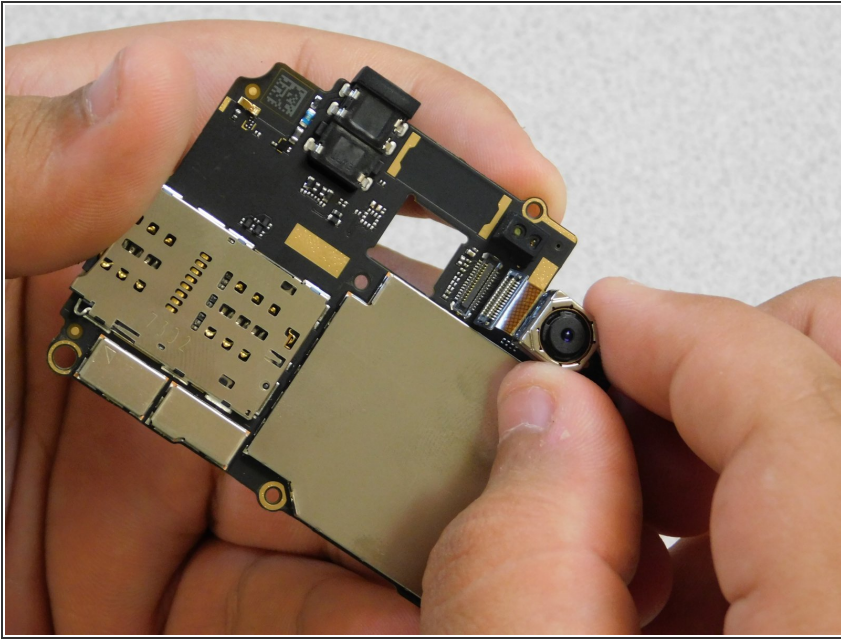
- Once you have the power connectors disconnected from the top chipset, use a Phillips screwdriver to remove the final screw located at the very top of the chipset (as shown in image).

## Step 10



- Then, simply lift chipset from top and detach from the device frame.

## Step 11



- You have now reached the final replacement component of the device, the Rear Facing Camera!
- For step-by-step instructions on replacing any of the device components covered throughout the disassembly process, check out our [ZTE Blade Spark Replacement guides](#).

To reassemble your device, follow these instructions in reverse order.