



# ZTE Blade Spark Fingerprint Scanner Replacement

ZTE Blade Spark Fingerprint Scanner Replacement step-by-step guide.

Written By: Hung Vu



---

## INTRODUCTION

Follow this guide to replace the Fingerprint Scanner for the ZTE Blade Spark. To get to this step please see [ZTE Blade Spark Disassembly Guide](#)

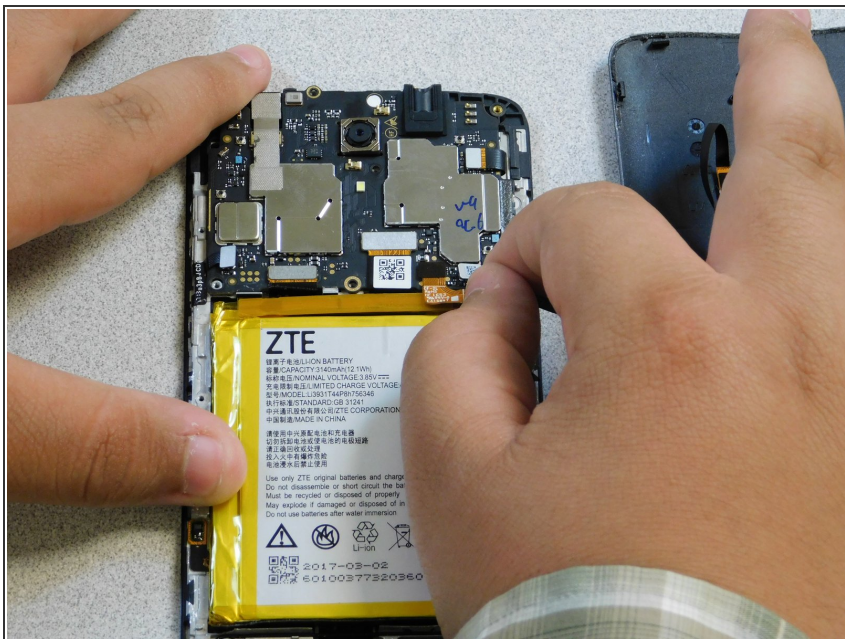
---



### TOOLS:

- [iFixit Pro Tech Toolkit](#) (1)
-

## Step 1 — Fingerprint Scanner



- Remove the Fingerprint Scanner:
- Gently lift to disconnect the scanner's power connector from the device main frame.

## Step 2



- Now that the scanner and device back panel is detached from the back of the device , push the scanner through from the front side of the back cover.
- Once you have done so, set aside.

To reassemble your device, follow the instructions on the ZTE Blade Spark Disassembly guide in reverse order.