



ZTE Blade Spark Rear Facing Camera Replacement

ZTE Blade Spark Rear Camera Replacement step-by-step guide.

Written By: Hung Vu



INTRODUCTION

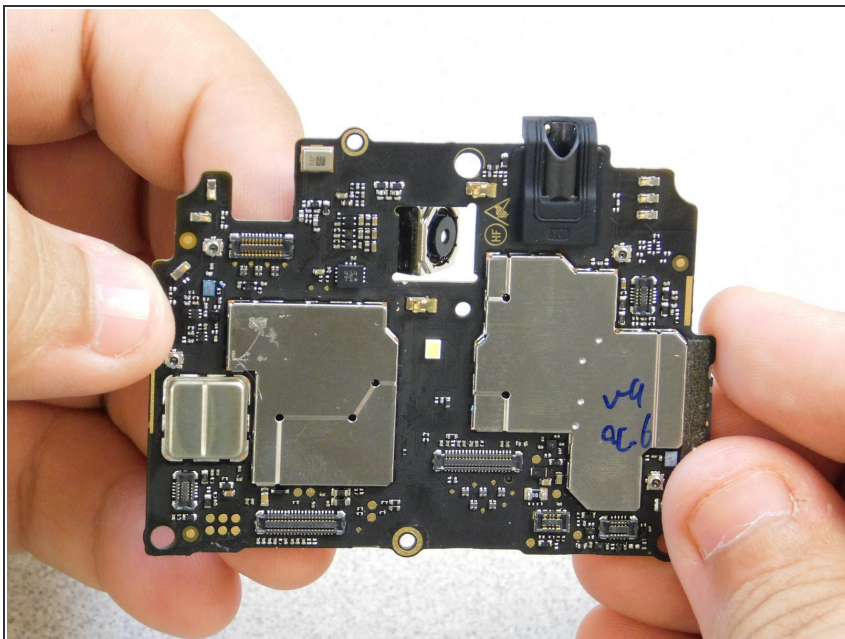
Follow this guide to replace the Rear Camera for the ZTE Blade Spark. To get to this point, please see [ZTE Blade Spark Disassembly Guide](#)



TOOLS:

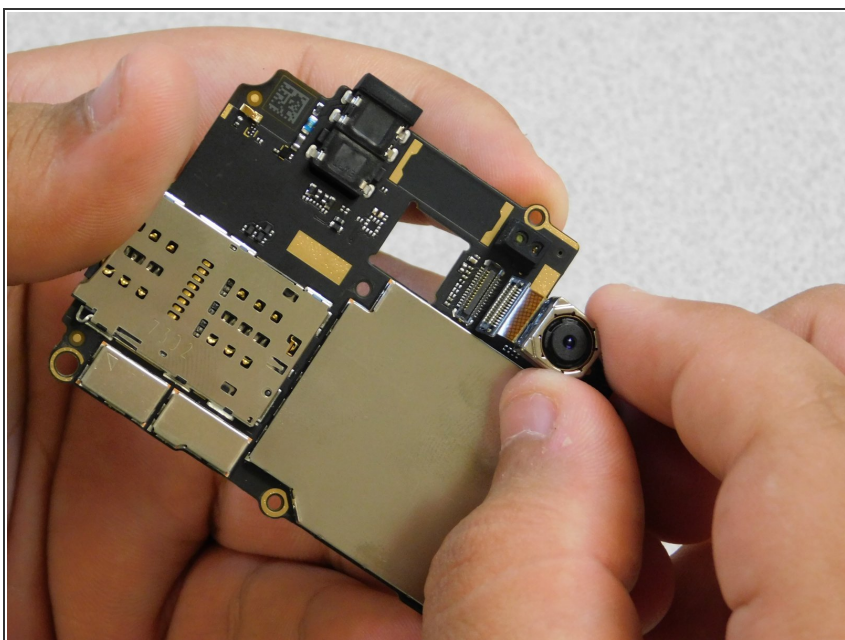
- [iFixit Pro Tech Toolkit](#) (1)
-

Step 1 — Rear Facing Camera



- When the top chit set is removed, push the camera through to the back side of the chip

Step 2



- To remove the camera, unplug the backside by pulling the camera gently

To reassemble your device, follow the instructions on the ZTE Blade Spark Disassembly guide in reverse order.

