



# ZTE Blade Z Max Fingerprint Sensor Replacement

Replace the faulty fingerprint sensor on the back of your ZTE Blade Z Max.

Written By: Ronald Weimar



## INTRODUCTION

This guide will require some disassembly of the phone as the ribbon cable connector for the fingerprint sensor is under the metal piece that encloses the motherboard.



### TOOLS:

- [SIM Card Eject Tool](#) (1)
- [iFixit Opening Tools](#) (1)
- [T2 Torx Screwdriver](#) (1)
- [JIS #000 Screwdriver](#) (1)



### PARTS:

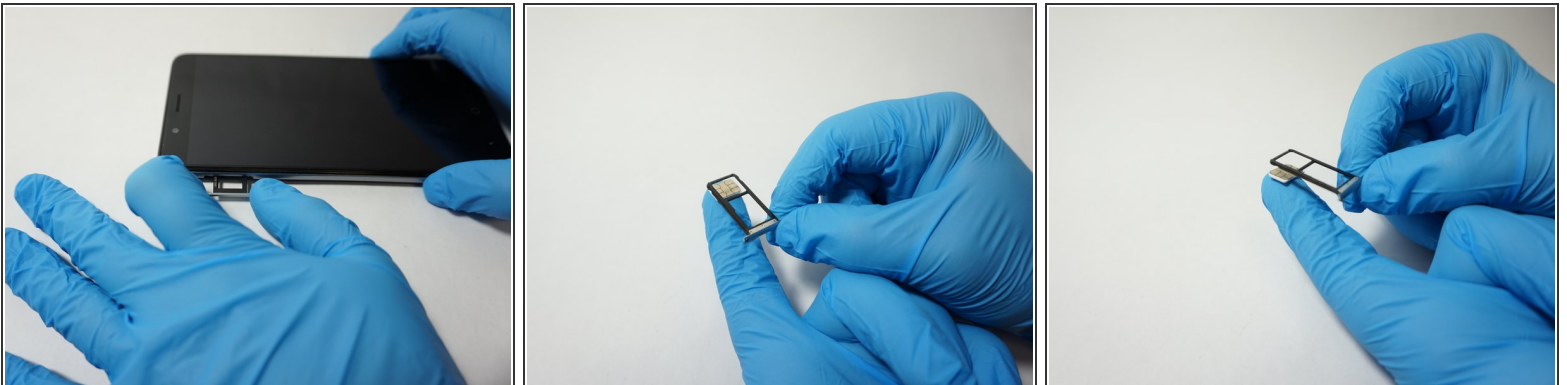
- [ZTE Blade Z Max Fingerprint Sensor](#) (1)

## Step 1 — SIM Card



- Turn the device on its side with the buttons away from you.
- Using the SIM Card Eject Tool, insert the narrow end into the ejection hole.
- Press firmly into the hole until the SIM card tray pops out far enough to grab with your fingers.

## Step 2



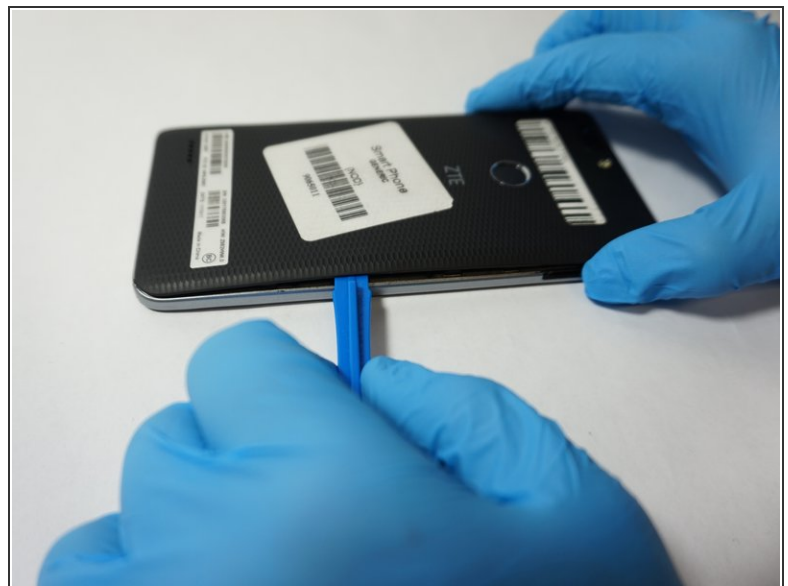
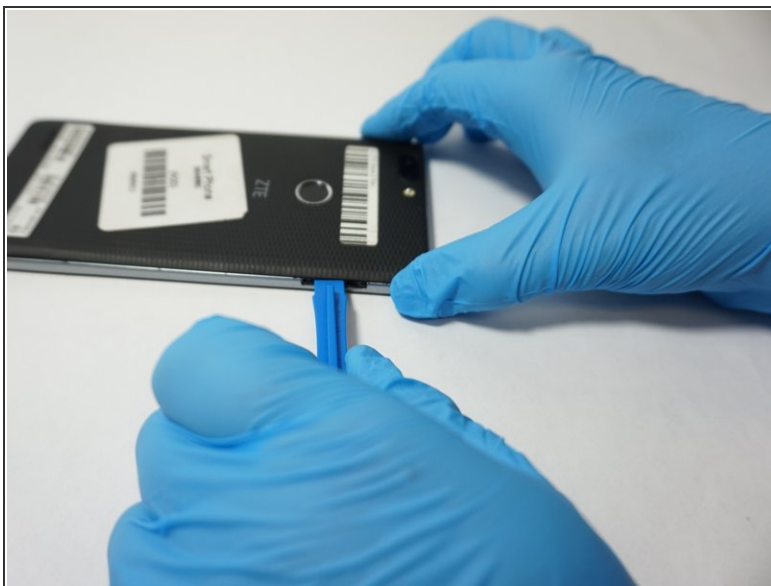
- Pull the tray out with your fingers .
- Remove the SIM card.

### Step 3 — Fingerprint Sensor



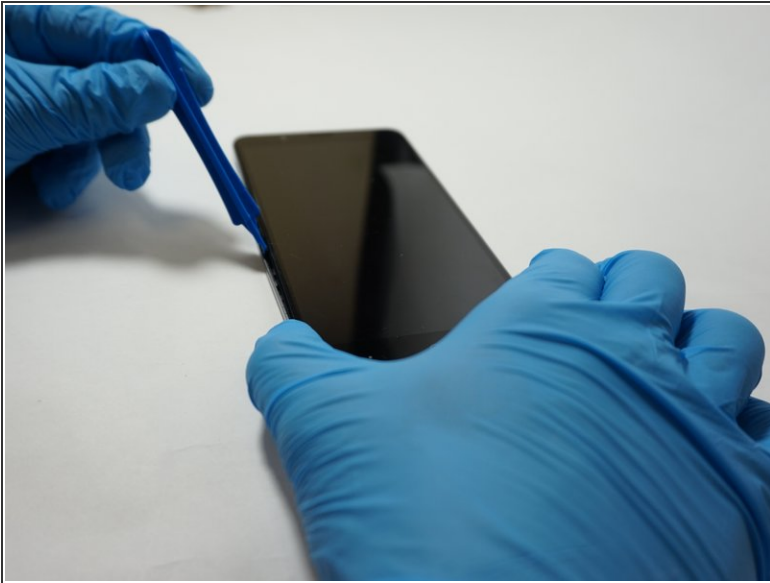
- Remove the one T2 screw from the side of the phone near where the SIM card tray was.

### Step 4



- Insert a plastic opening tool into the space where the SIM card tray used to be.
- Gently pry the back away from the phone frame until you hear and audible click of the back separating.

## Step 5



- Insert the plastic opening tool into the space you created between the phone back and frame.
- Slide the plastic opening tool along the outside of the phone, underneath the back, to separate the rest of the clips holding the back onto the frame.

## Step 6



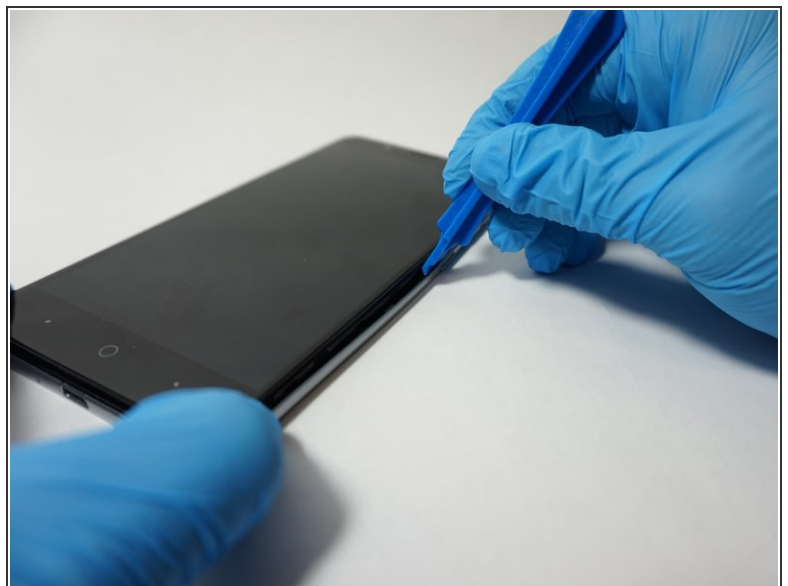
- Rotate the back over to the side, being careful not to damage the fingerprint sensor ribbon cable.
- Use a plastic opening tool to separate the fingerprint sensor from the back of the phone.
  - ☑ On reassembly, add a piece of simple scotch tape to hold the fingerprint sensor to the phone back.
- Set the phone back aside.

## Step 7



- Remove the 6 silver 2.9mm screws from the back of the phone with a JIS #000 bit.
- Remove the 11 black 3.5mm screws with the same JIS #000 bit.

## Step 8



- Turn the phone over, with the screen up.
- Insert the opening tool between the screen and the silver trim that surrounds it.
- Run the plastic opening tool around the circumference of the phone to separate the clips of that hold the trim to the frame.

This document was generated on 2019-09-18 10:43:50 AM (MST).

## Step 9



- Turn the phone back over, with the screen down.
- Lift the trim piece off of the phone and set aside.

## Step 10



- Using a plastic opening tool, separate the fingerprint ribbon connector from the motherboard.

To reassemble your device, follow these instructions in reverse order.