



# ZTE Blade Z Max SIM Card Replacement

This guide will show you how to quickly replace the SIM card in your ZTE Blade Z Max.

Written By: Ronald Weimar



## INTRODUCTION

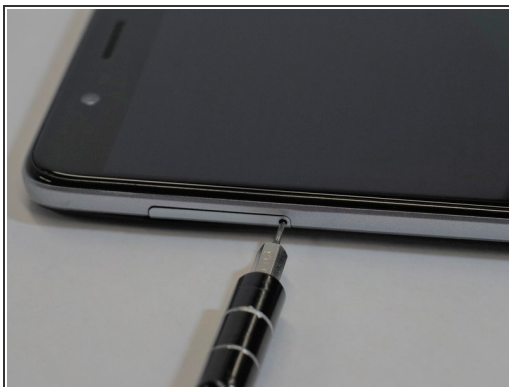
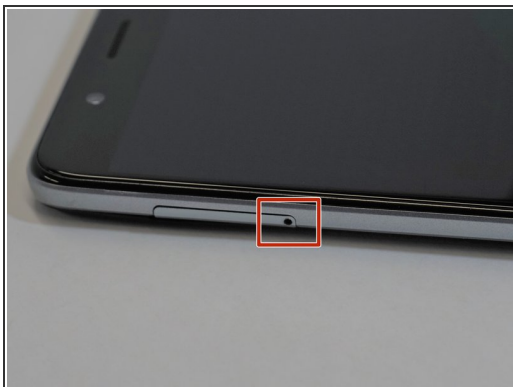
If you change cell carriers or buy this phone unlocked, you will have to install a new SIM card. Most new phones will come with a SIM card removal tool in the box, but any small rigid object such as a paperclip or a thumbtack will work.

---

### TOOLS:

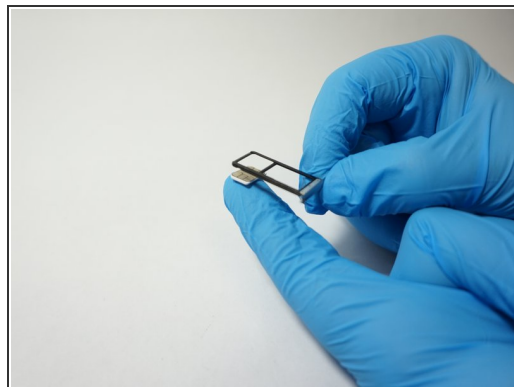
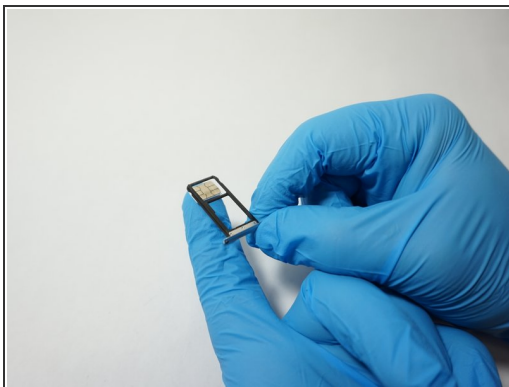
- [SIM Card Eject Tool](#) (1)
-

## Step 1 — SIM Card



- Turn the device on its side with the buttons away from you.
- Using the SIM Card Eject Tool, insert the narrow end into the ejection hole.
- Press firmly into the hole until the SIM card tray pops out far enough to grab with your fingers.

## Step 2



- Pull the tray out with your fingers .
- Remove the SIM card.

To reassemble your device, follow these instructions in reverse order.