



ZTE Blade Z Max Side Mounted Buttons Replacement

This guide will show you how to replace the volume and power buttons on the right side of your ZTE Blade Z Max.

Written By: Ronald Weimar



INTRODUCTION

The volume and power buttons are connected to the same ribbon cable. If just one of the three buttons fails, you will have to replace all three in order to fix it.



TOOLS:

- [JIS #000 Screwdriver](#) (1)
- [SIM Card Eject Tool](#) (1)
- [iFixit Opening Tools](#) (1)
- [iFixit Opening Picks set of 6](#) (1)
- [T2 Torx Screwdriver](#) (1)
- [Tweezers](#) (1)
- [Spudger](#) (1)



PARTS:

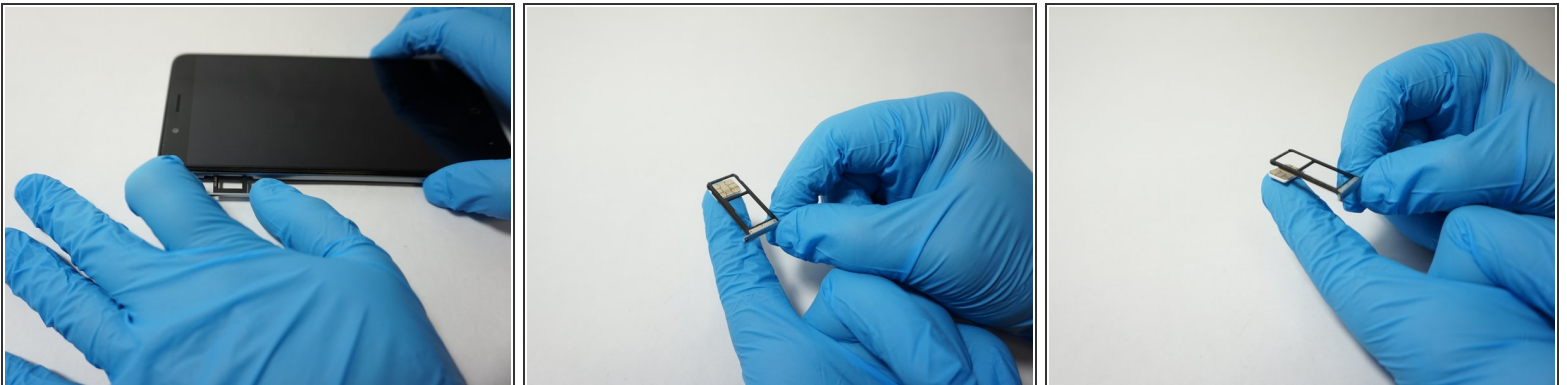
- [ZTE Blade Z Max Power/Volume Buttons](#) (1)

Step 1 — SIM Card



- Turn the device on its side with the buttons away from you.
- Using the SIM Card Eject Tool, insert the narrow end into the ejection hole.
- Press firmly into the hole until the SIM card tray pops out far enough to grab with your fingers.

Step 2



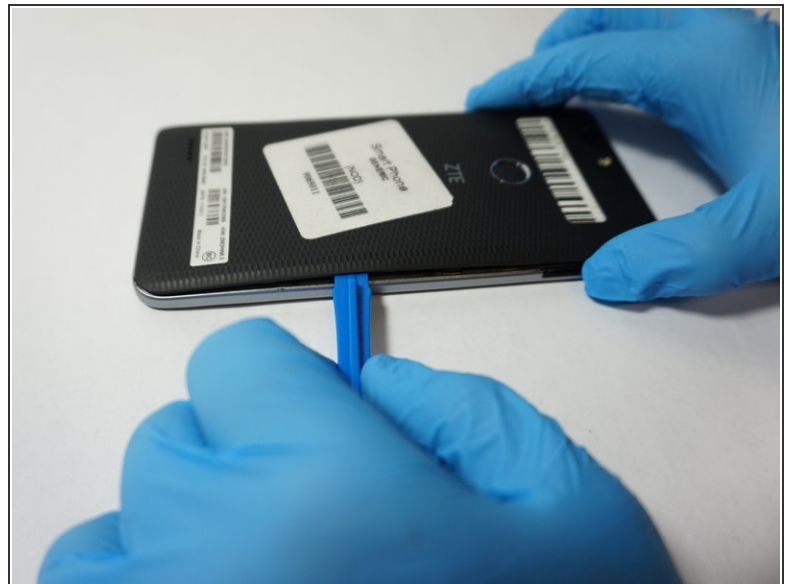
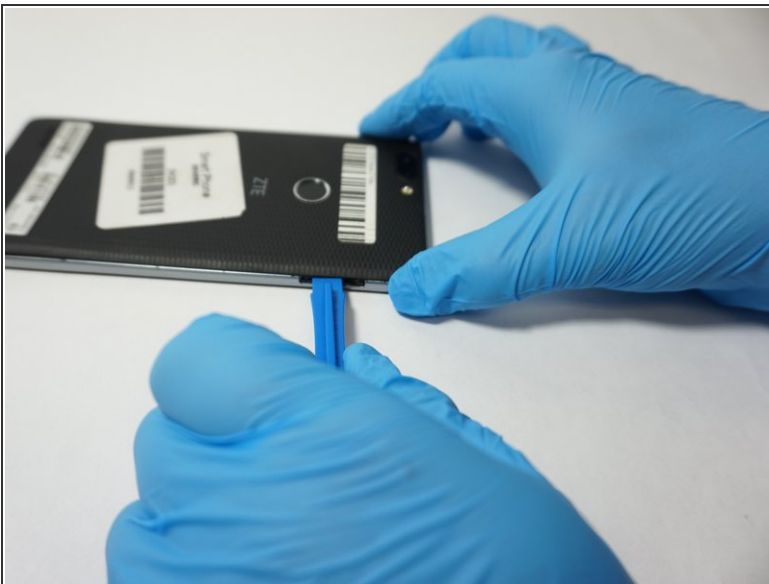
- Pull the tray out with your fingers .
- Remove the SIM card.

Step 3 — Fingerprint Sensor



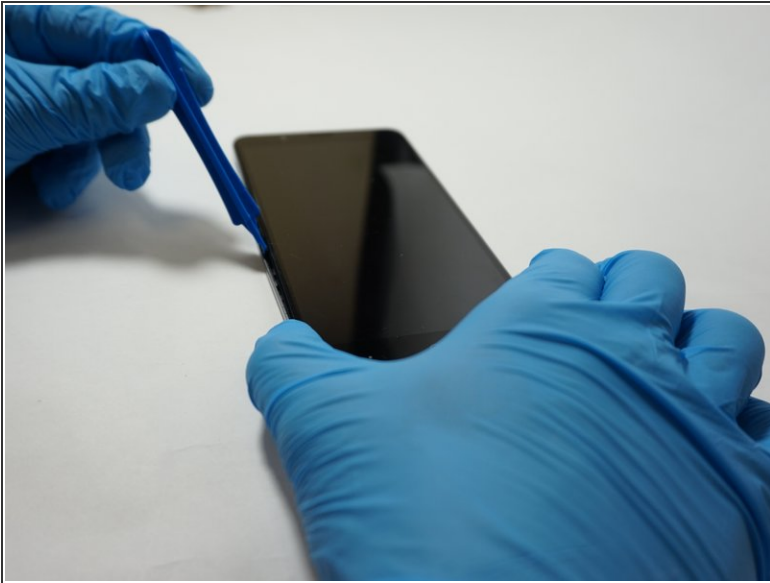
- Remove the one T2 screw from the side of the phone near where the SIM card tray was.

Step 4



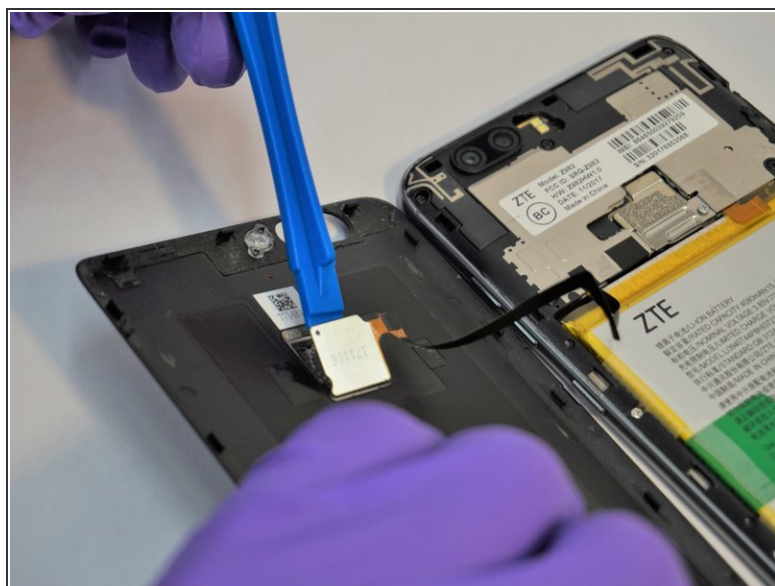
- Insert a plastic opening tool into the space where the SIM card tray used to be.
- Gently pry the back away from the phone frame until you hear and audible click of the back separating.

Step 5



- Insert the plastic opening tool into the space you created between the phone back and frame.
- Slide the plastic opening tool along the outside of the phone, underneath the back, to separate the rest of the clips holding the back onto the frame.

Step 6



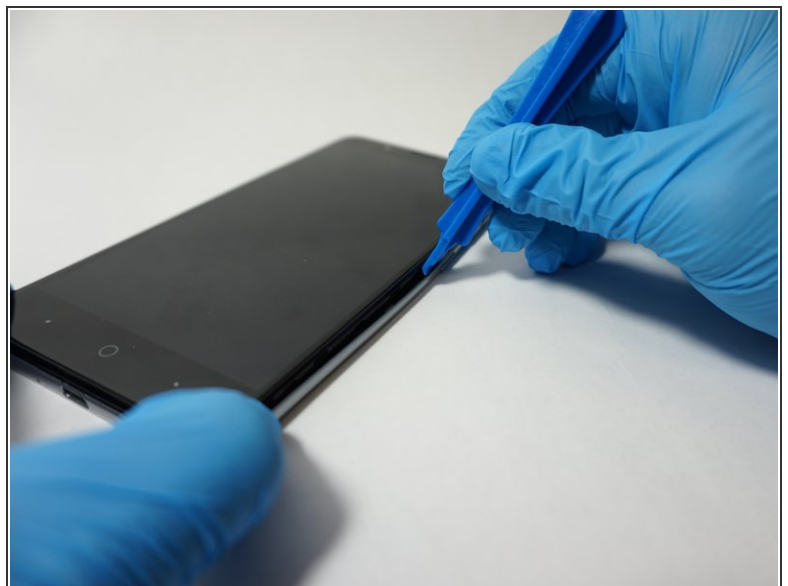
- Rotate the back over to the side, being careful not to damage the fingerprint sensor ribbon cable.
- Use a plastic opening tool to separate the fingerprint sensor from the back of the phone.
 - ☑ On reassembly, add a piece of simple scotch tape to hold the fingerprint sensor to the phone back.
- Set the phone back aside.

Step 7



- Remove the 6 silver 2.9mm screws from the back of the phone with a JIS #000 bit.
- Remove the 11 black 3.5mm screws with the same JIS #000 bit.

Step 8



- Turn the phone over, with the screen up.
- Insert the opening tool between the screen and the silver trim that surrounds it.
- Run the plastic opening tool around the circumference of the phone to separate the clips of that hold the trim to the frame.

This document was generated on 2020-04-04 04:06:00 AM (MST).

Step 9



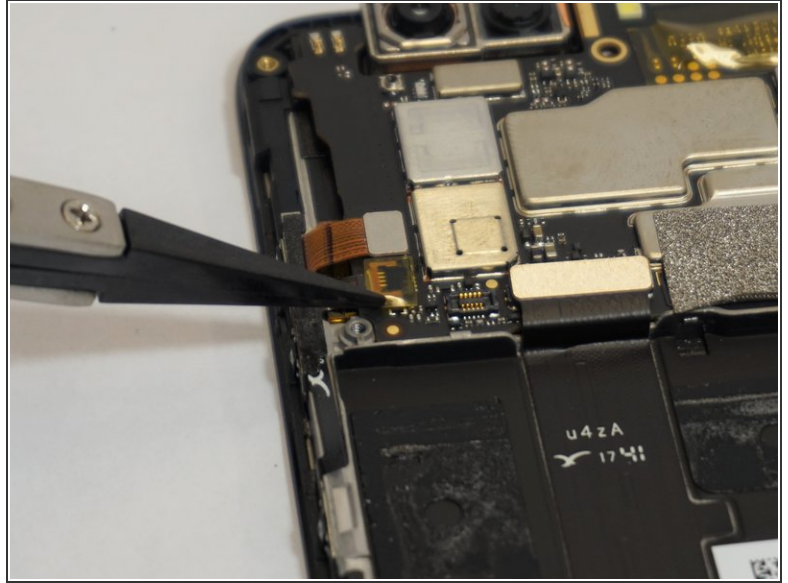
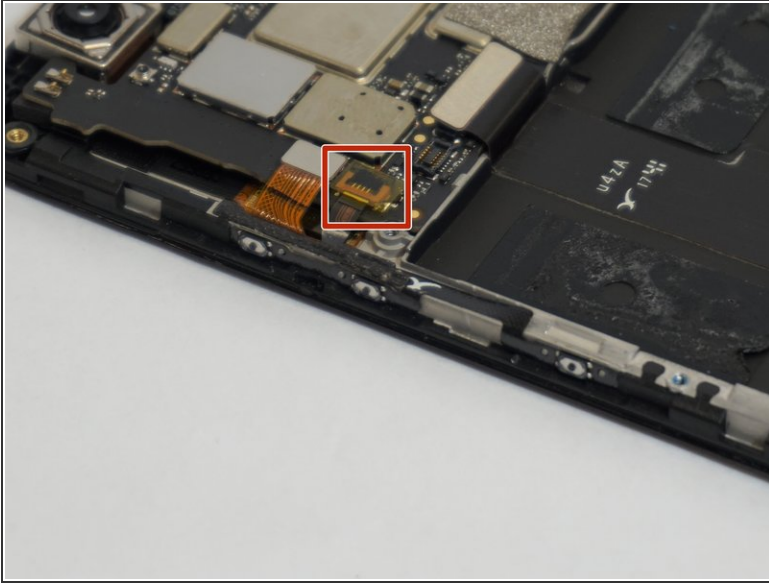
- Turn the phone back over, with the screen down.
- Lift the trim piece off of the phone and set aside.

Step 10



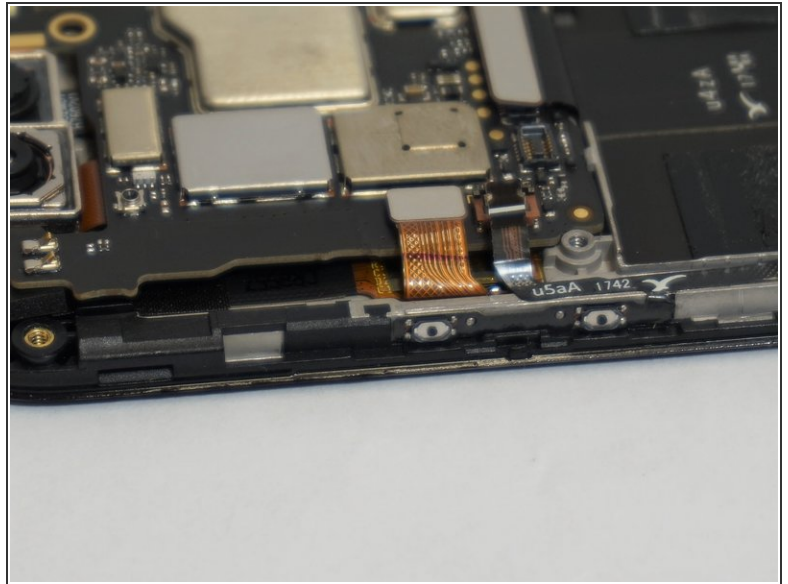
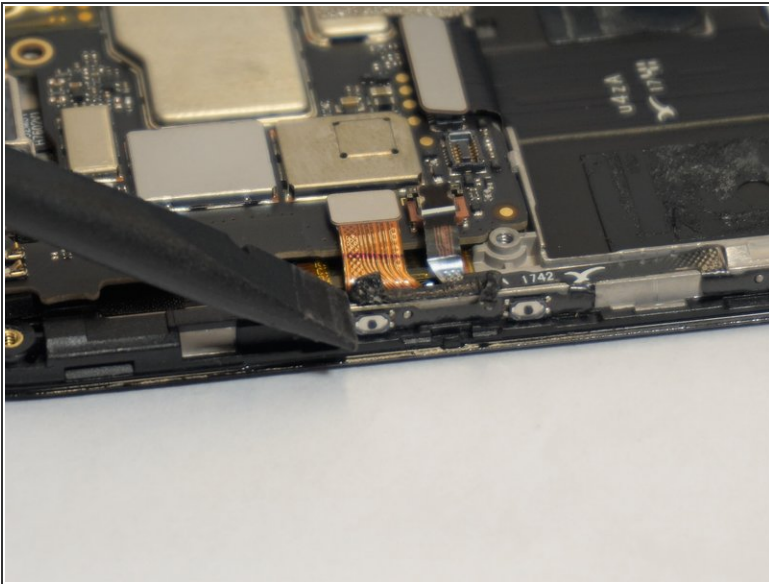
- Using a plastic opening tool, separate the fingerprint ribbon connector from the motherboard.

Step 11 — Side Mounted Buttons



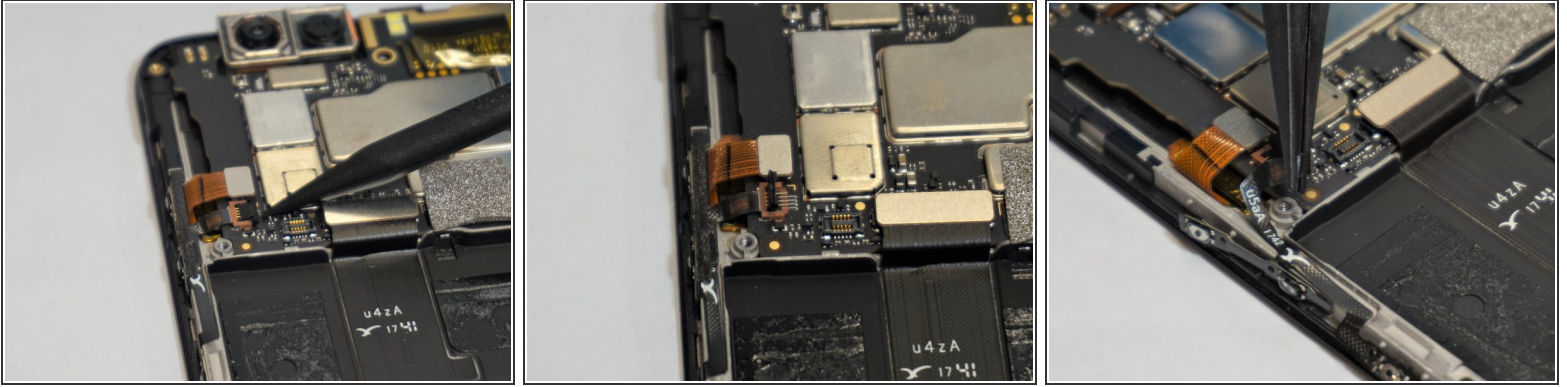
- Using a set of tweezers, pull off the small piece of tape on top of the ribbon cable connector on the left side of the motherboard.

Step 12



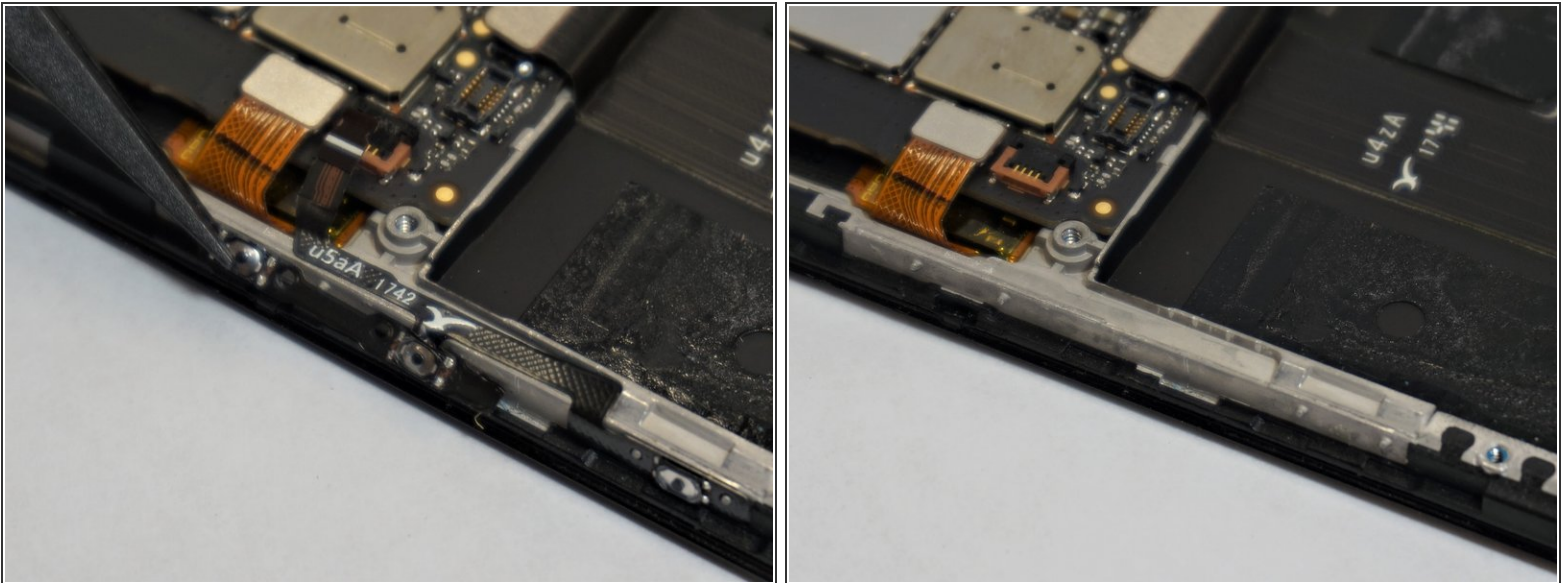
- Use a plastic opening tool or spudger to scrape the glue away from the ribbon cable.


Step 13



- Using a plastic opening tool or spudger, open the zip connection by prying up on the right (black) side of the connector.
- Using the tweezers, carefully pull the the ribbon cable out of the connector.

Step 14



 The button ribbon cable is very fragile, especially near the down volume button. If you intend on reinstalling this piece later, be careful not to rip it.

- Using a plastic opening tool or tweezers, pry the edge of the button strip away from the phone.
- Once all of the buttons are free, the whole assembly should simply lift out.

Glue may be required to hold the new buttons to the phone.

This document was generated on 2020-04-04 04:06:00 AM (MST).



To reassemble your device, follow these instructions in reverse order.