



# ZTE Compel Camera Replacement

This guide will show you how to replace the rear camera of the ZTE Compel.

Written By: Tayler McCleese



## INTRODUCTION

This replacement guide will provide you with the necessary instructions on how to replace the rear camera. You may need to replace the camera if you have tried removing and reinserting the SD card, and/or turning the phone on and off again and the camera still remains unresponsive.



### TOOLS:

- [Spudger](#) (1)
  - [Tweezers](#) (1)
  - [Phillips #000 Screwdriver](#) (1)
  - [Magnetic Project Mat](#) (1)
-

## Step 1 — Battery



- Place the phone on a flat surface with the screen facing down. This will allow easy access to the removable black plastic cover on the back of the phone.

## Step 2



- In the bottom right corner of the device, use your fingernail to remove the back cover of the phone by lifting up and holding the device with your other hand.

## Step 3



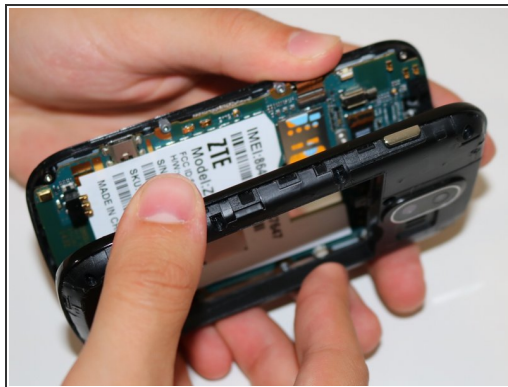
- In the top-right area of the battery, use your fingernail to lift the battery out of the phone.
- ⚠ If your battery is corroded, take all necessary precautions, such as, gloves and protective eyewear.

## Step 4 — Camera



- Remove the 9 screws that measure 4 mm Phillips #000.
- ⓘ Use your iFixit Magnetic Project Mat, or any magnetic surface, to hold your removed screws while working on your ZTE Compel.

## Step 5



- Notice the crease in the shiny black plastic. Insert the flat end of your spudger here, about 3mm above the volume buttons, and work your spudger around the circumference of the phone until the front and back are separated.

## Step 6



- Remove the camera by placing your tweezers on the gold piece attached to camera and lift up, disconnecting from the motherboard.
- Grip the camera with your tweezers and lift up to remove the camera.
- ⓘ May need to use light force to remove camera due to the adhesive on the motherboard.

To reassemble your device, follow these instructions in reverse order.