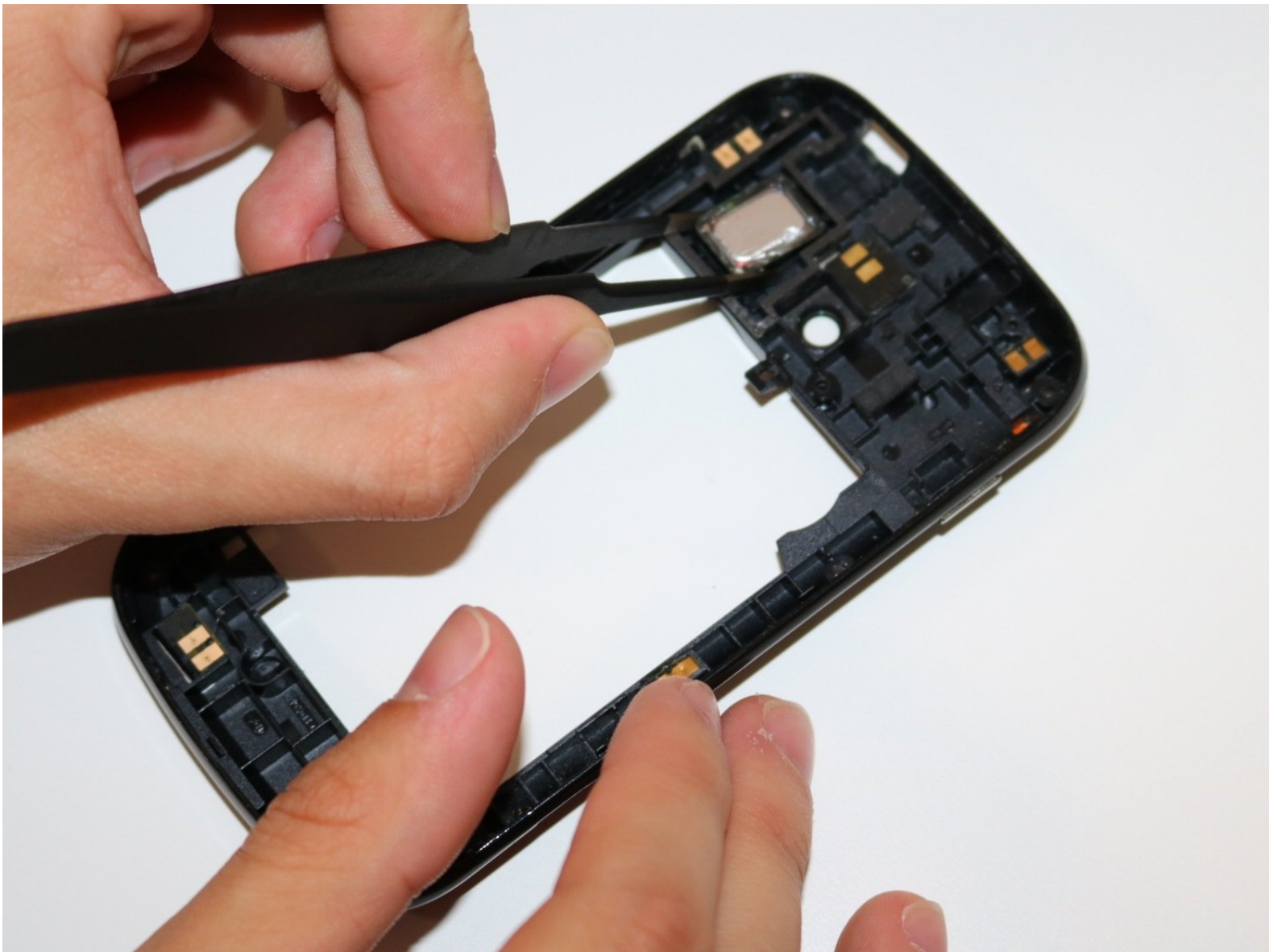




ZTE Compel Speaker Replacement

This guide will show you how to replace the speaker in the ZTE Compel. You may need to replace the speaker if there is no sound or if the quality is bad.

Written By: Tayler McCleese



INTRODUCTION

This replacement guide will provide you with the necessary instructions to replace the speaker in the ZTE Compel. You may need to replace the speaker if there is no sound or if the sound quality is off.

TOOLS:

- [Spudger](#) (1)
 - [Tweezers](#) (1)
 - [Phillips #000 Screwdriver](#) (1)
 - [Magnetic Project Mat](#) (1)
-

Step 1 — Battery



- Place the phone on a flat surface with the screen facing down. This will allow easy access to the removable black plastic cover on the back of the phone.

Step 2



- In the bottom right corner of the device, use your fingernail to remove the back cover of the phone by lifting up and holding the device with your other hand.

Step 3



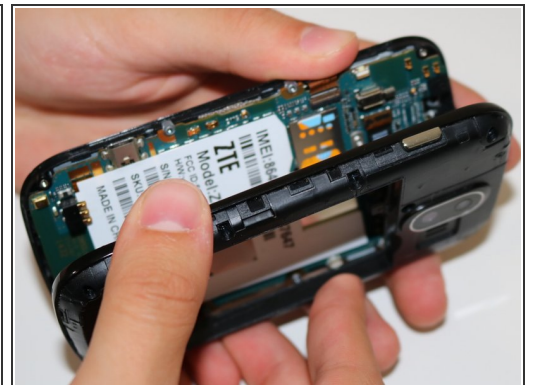
- In the top-right area of the battery, use your fingernail to lift the battery out of the phone.
- ⚠ If your battery is corroded, take all necessary precautions, such as, gloves and protective eyewear.

Step 4 — Speaker



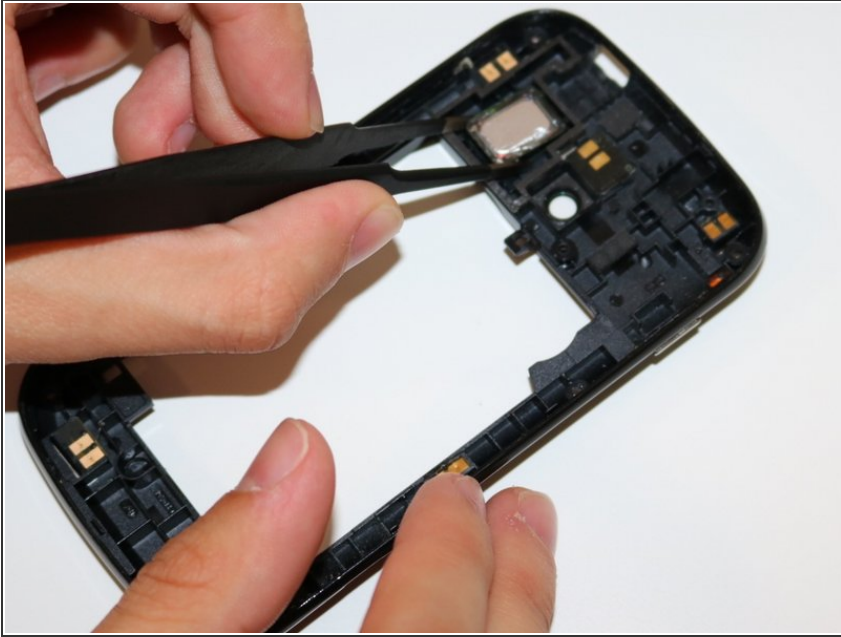
- Remove the 9 screws that measure 4 mm Phillips. Use your PH000 screwdriver attachment.
- ⓘ Use your iFixit Magnetic Project Mat to hold your removed screws while working on your ZTE Compel

Step 5




- Insert the flat end of your black plastic spudger into the crease and work it around the entire circumference of the phone until the front and back are separated.

Step 6



- The speaker is located in the top-left corner of the back plate. Using your tweezers, grip the sides of the speaker and pull it out.

 Be cautious pulling the speaker out as it might move while pulling it due to adhesive wearing away.

To reassemble your device, follow these instructions in reverse order.