



ZTE Quest n817 Battery Replacement

This guide will allow owners of the ZTE Quest n817 to replace their battery.

Written By: Eric Loureiro



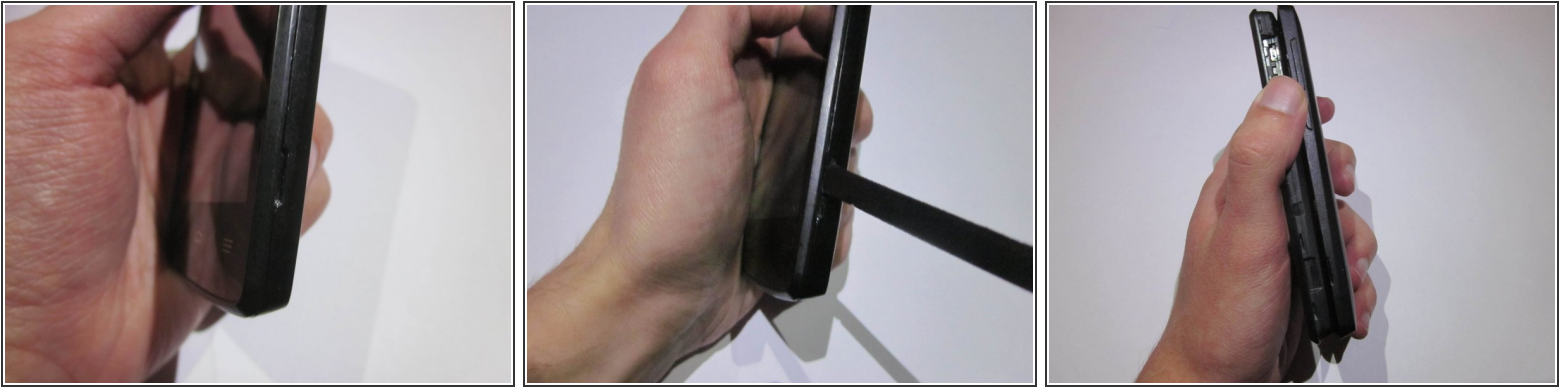
INTRODUCTION


If your ZTE Quest phone can't hold a charge or you're having trouble turning on your phone, then this guide will provide instructions on how to replace your battery.

TOOLS:

- [Spudger](#) (1)
-

Step 1 — Battery



 Ensure that the phone is turned off before starting.

- Orient the device so that the inset on the right side of the device is facing you.
- Insert the spudger into the inset and carefully remove the back panel.

Step 2



- Use the ribbon to remove the exposed battery.

To reassemble your device, follow these instructions in reverse order.