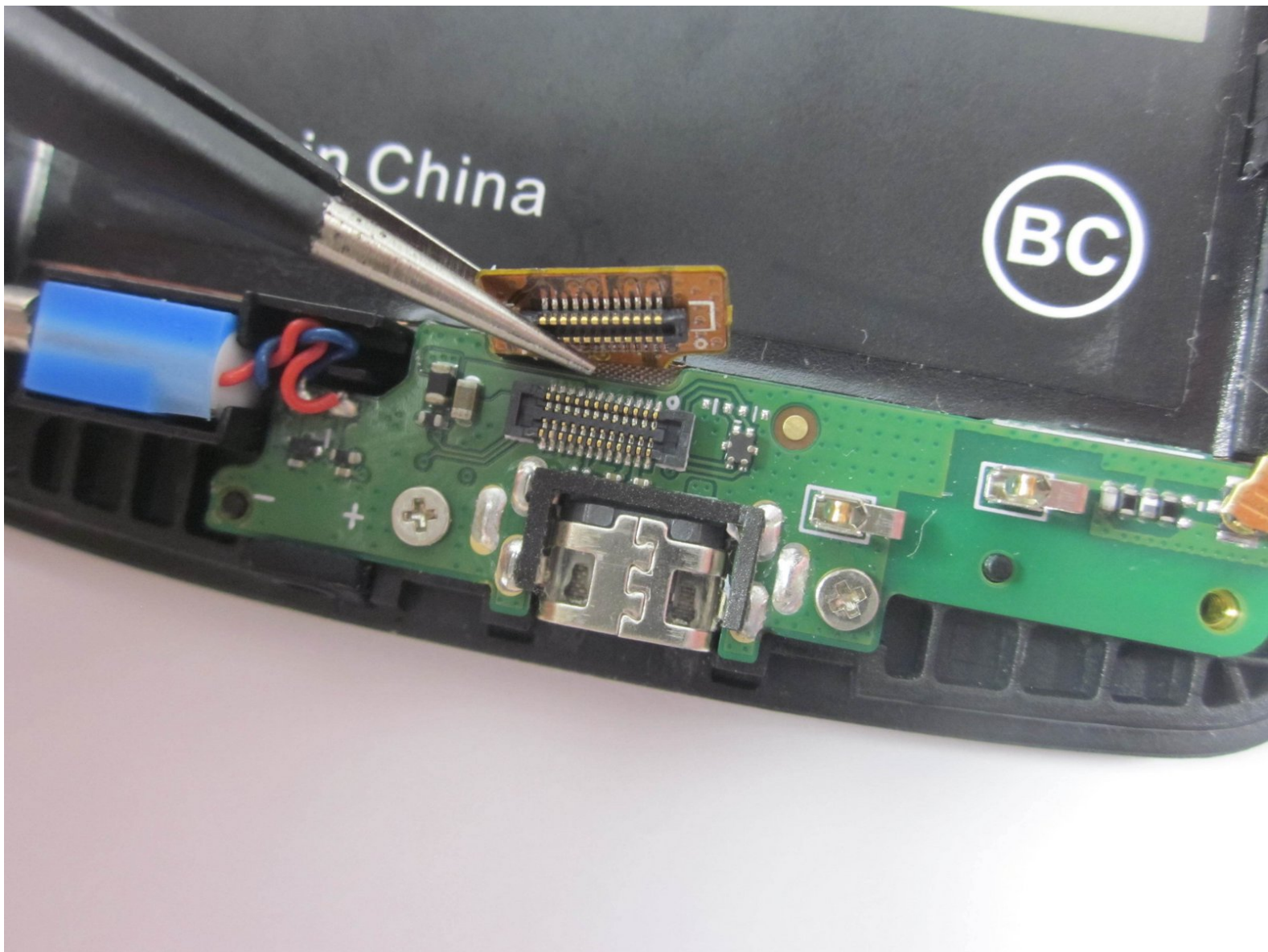




ZTE Quest n817 Daughterboard Replacement

The ZTE Quest's daughterboard replacement guide can be used to replace a faulty charging port or vibration motor.

Written By: Eric Loureiro



INTRODUCTION

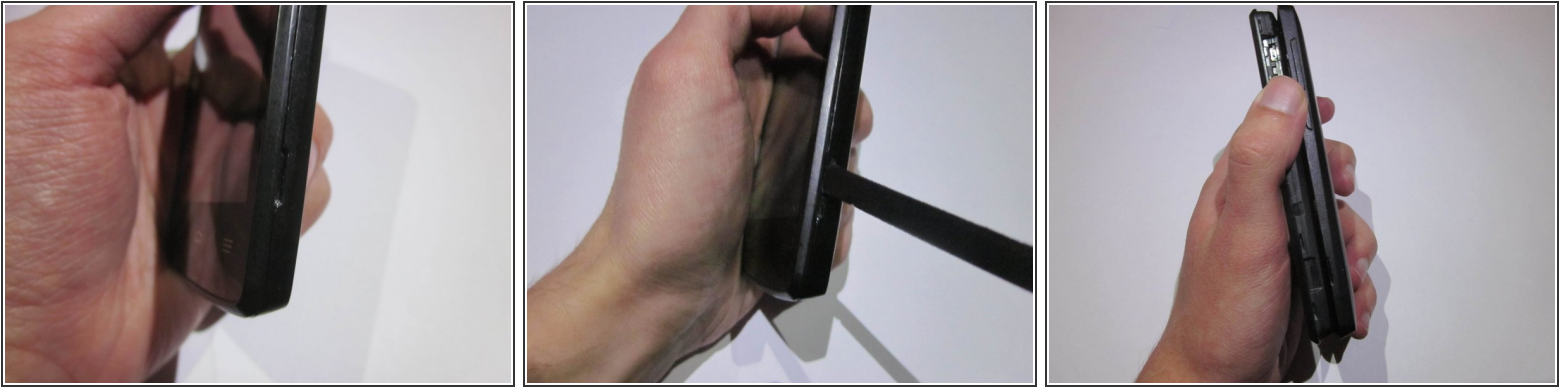
The ZTE Quest's daughterboard holds the charging port and the phone's vibration motor. If either of these need to be replaced then this guide will run through the process of removing the daughterboard.




TOOLS:

- [Spudger](#) (1)
 - [Tweezers](#) (1)
 - [JIS #000 Screwdriver](#) (1)
-

Step 1 — Battery



 Ensure that the phone is turned off before starting.

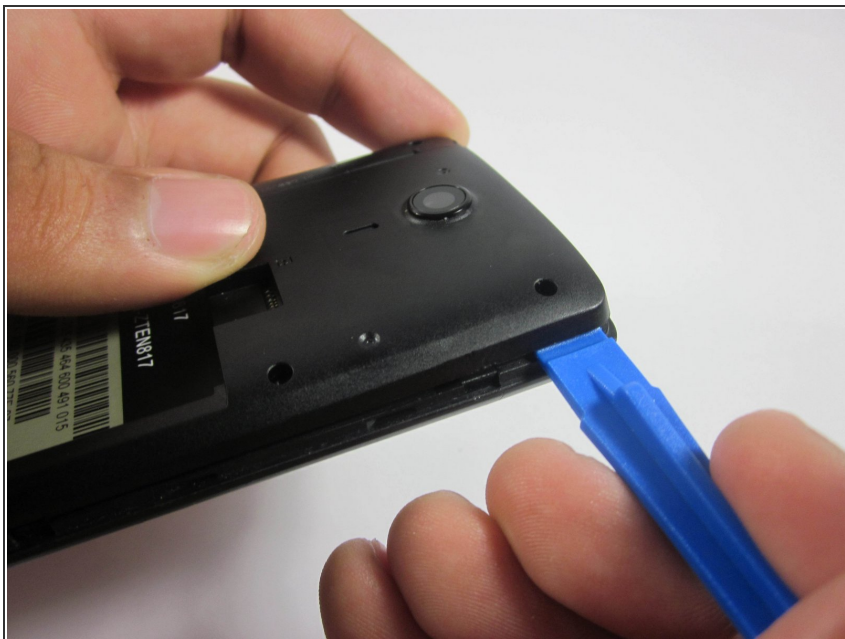
- Orient the device so that the inset on the right side of the device is facing you.
- Insert the spudger into the inset and carefully remove the back panel.

Step 2



- Use the ribbon to remove the exposed battery.

Step 3 — Daughterboard



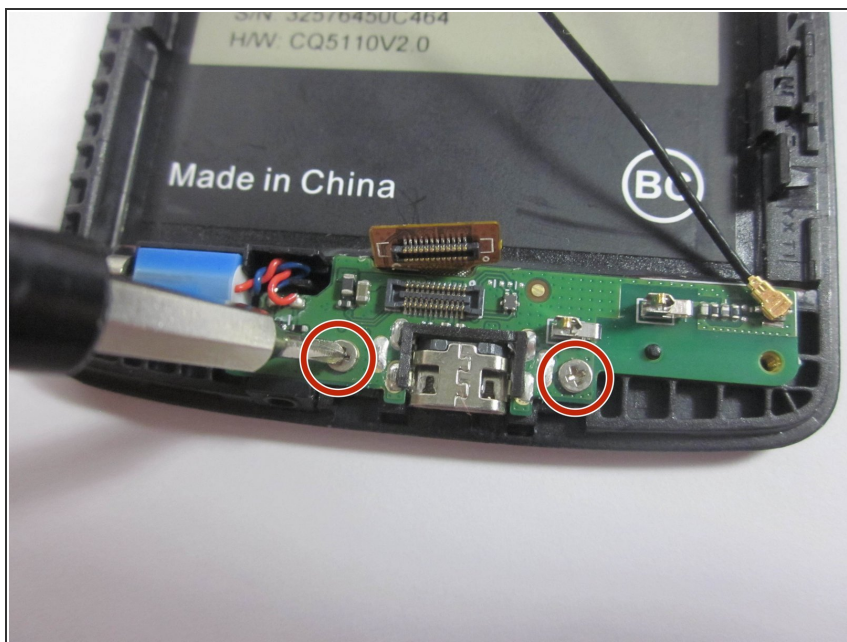
- Carefully pry open the back panel with the plastic opening tool.

Step 4



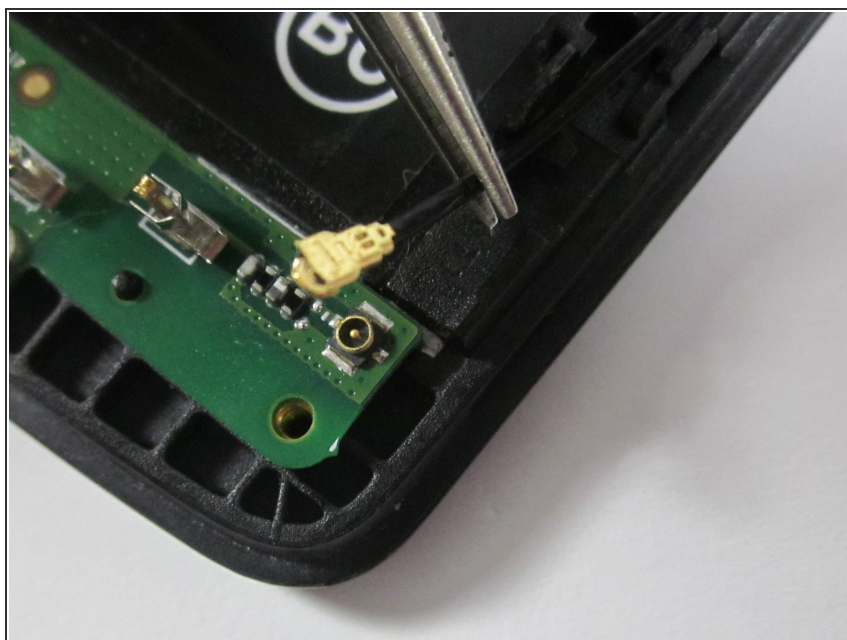
- Unplug the flat-top connector by lifting each side of the connector up before fully removing it from its socket.

Step 5



- Remove the two 2.0mm screws on either side of the daughterboard.

Step 6



- Remove the coaxial connector that links the daughterboard to the motherboard.

To reassemble your device, follow these instructions in reverse order.