



ZTE Speed Earpiece Speaker Replacement

As a phone the earpiece speaker is essential to the use of hearing someone/something on the phone.

Written By: Garrett Barry



INTRODUCTION

The earpiece speaker is used for all aspects involving sound from the phone



TOOLS:

- [iFixit Opening Tools](#) (1)
 - [Phillips #000 Screwdriver](#) (1)
-

Step 1 — Motherboard



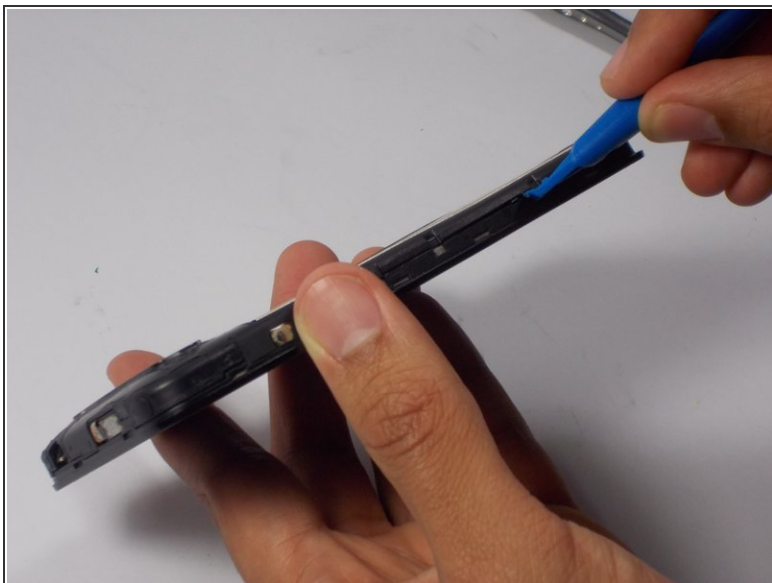
- Pull off back cover at bottom right corner.

Step 2



- Remove the seven 3.175mm Phillips head screws from the inner back located at the top, upper-middle-right, middle-right, lower-right, and bottom.

Step 3



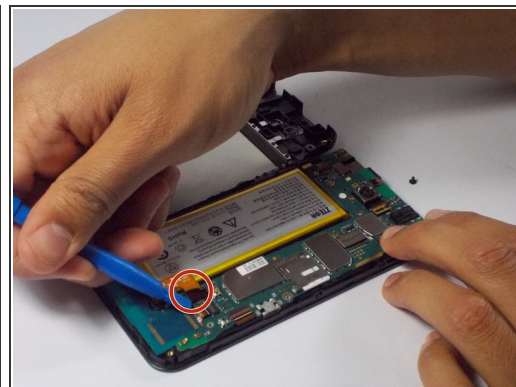
- With the plastic opening tool the spudger, gently pry off the inner back.
- Be careful not to pry it off too hard, as it is just a plastic covering.

Step 4



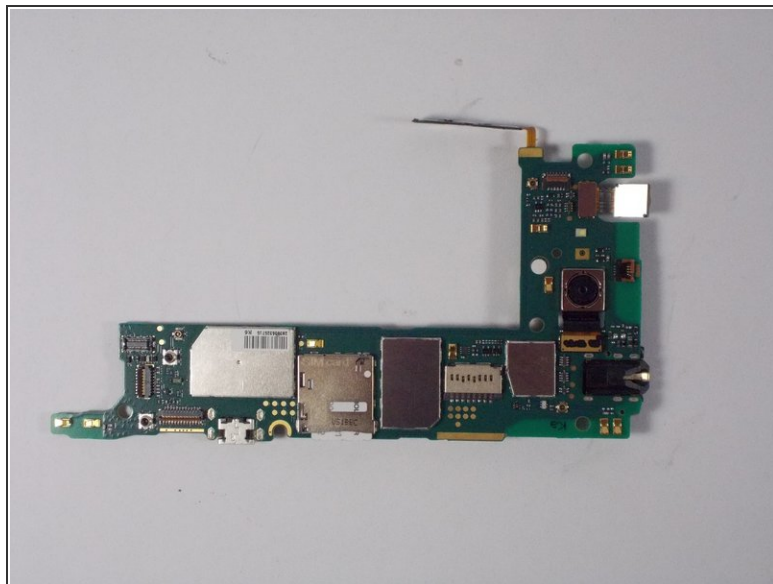
- Remove the one 2.381mm Phillips head screw from the motherboard located in the upper-middle part of the phone next to the bottom left corner of the back camera.

Step 5



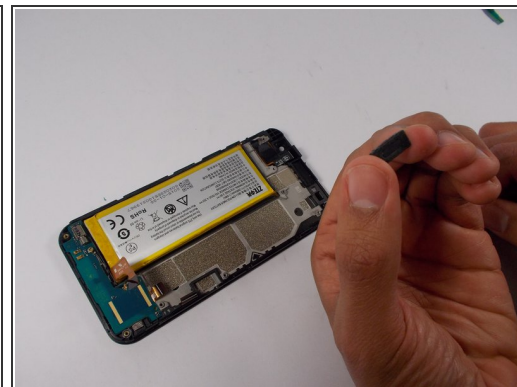
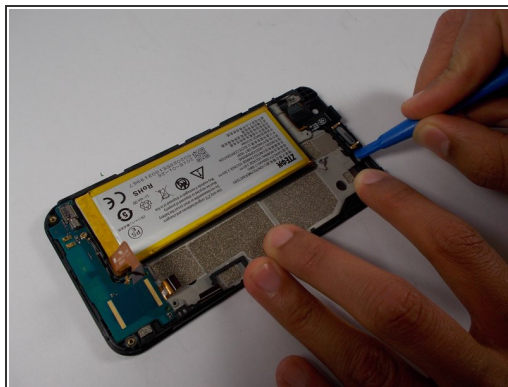
- Using the spudger, gently pry up all ZIF connectors
- ZIF connectors have a tiny tab that needs to be flipped up in order to safely remove the cable
- Using same spudger, gently pry up the orange flat top connector

Step 6



- Carefully take off motherboard.

Step 7 — Earpiece Speaker



- The earpiece speaker is located at the top-middle of the phone.
- Using the plastic opening tool, carefully press into side of earpiece speaker and push up.
- You will then be able to grab the speaker with your fingers and remove it.

To reassemble your device, follow these instructions in reverse order.