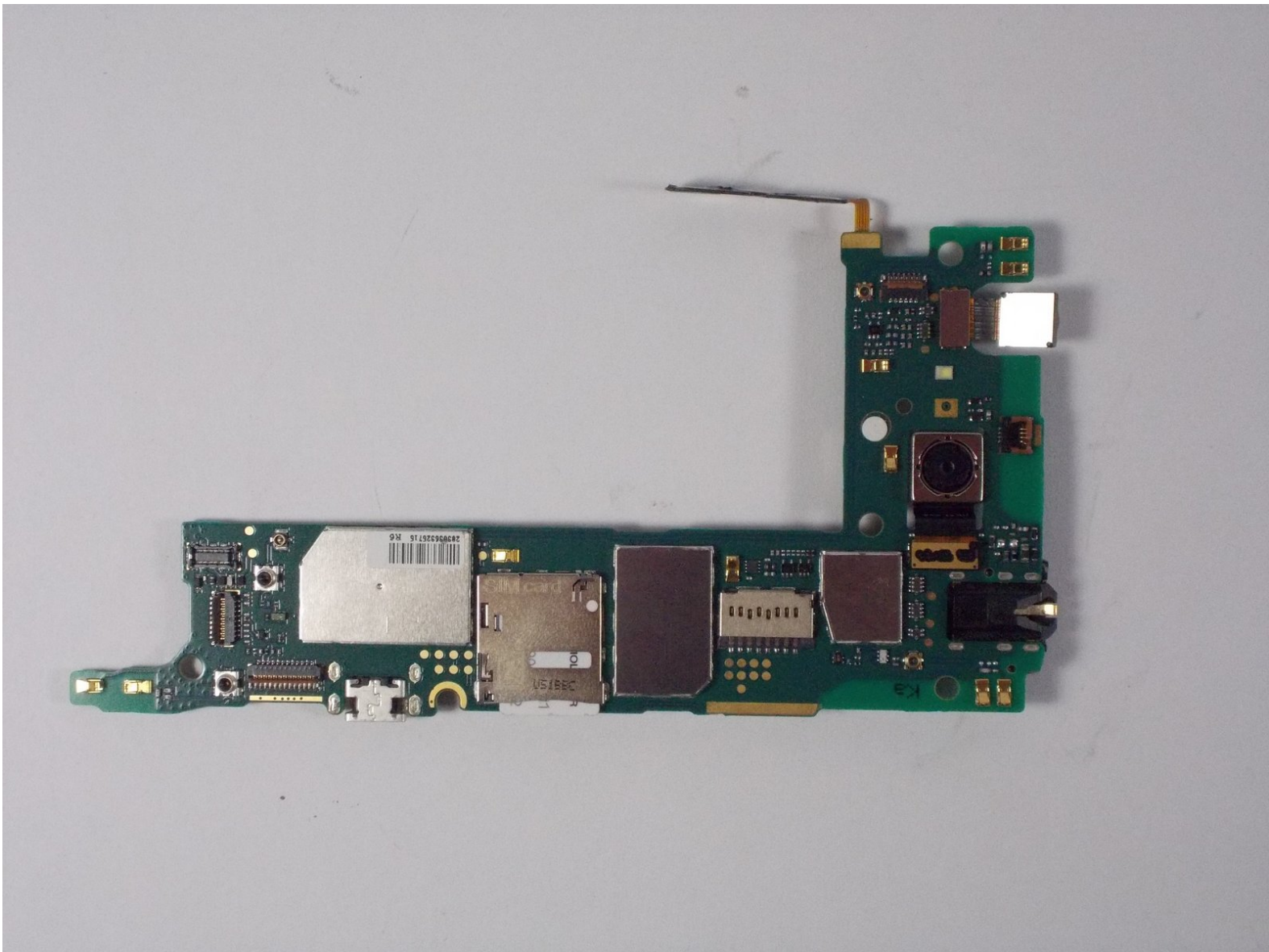




# ZTE Speed Motherboard Replacement

The motherboard is the control center to the phone. Knowing how to take out the motherboard carefully is very important.

Written By: Garrett Barry



## INTRODUCTION

As it controls the whole phone, knowing how to remove the motherboard of the ZTE Speed is important.



### TOOLS:

- [iFixit Opening Tools](#) (1)
  - [Phillips #000 Screwdriver](#) (1)
-

## Step 1 — Motherboard



- Pull off back cover at bottom right corner.

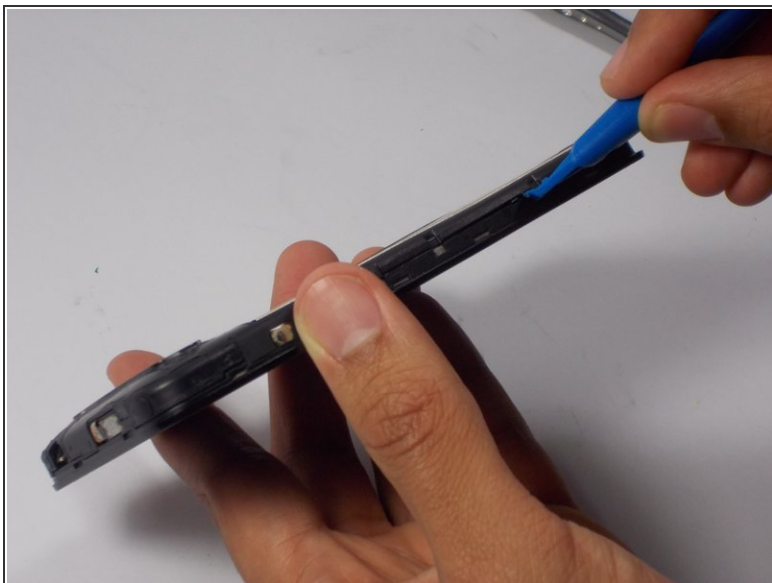
## Step 2



- Remove the seven 3.175mm Phillips head screws from the inner back located at the top, upper-middle-right, middle-right, lower-right, and bottom.



### Step 3



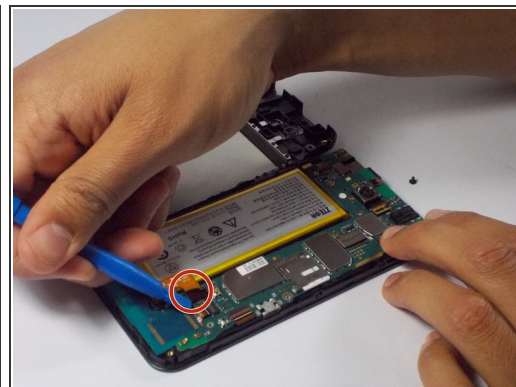
- With the plastic opening tool the spudger, gently pry off the inner back.
- Be careful not to pry it off too hard, as it is just a plastic covering.

### Step 4



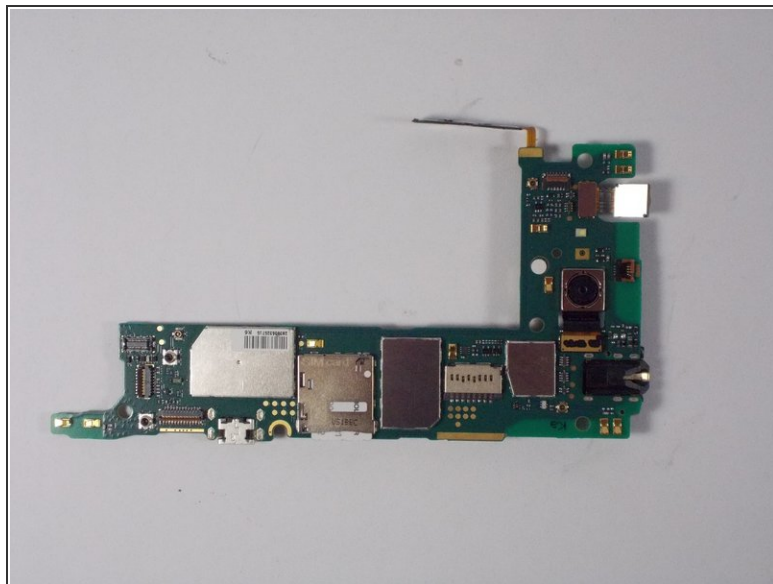
- Remove the one 2.381mm Phillips head screw from the motherboard located in the upper-middle part of the phone next to the bottom left corner of the back camera.

## Step 5



- Using the spudger, gently pry up all ZIF connectors
- ZIF connectors have a tiny tab that needs to be flipped up in order to safely remove the cable
- Using same spudger, gently pry up the orange flat top connector

## Step 6



- Carefully take off motherboard.

To reassemble your device, follow these instructions in reverse order.