



ZTE Telstra T95 SIM Card Replacement

You may have to replace your SIM card if you change carriers, phone number or if your card is damaged.

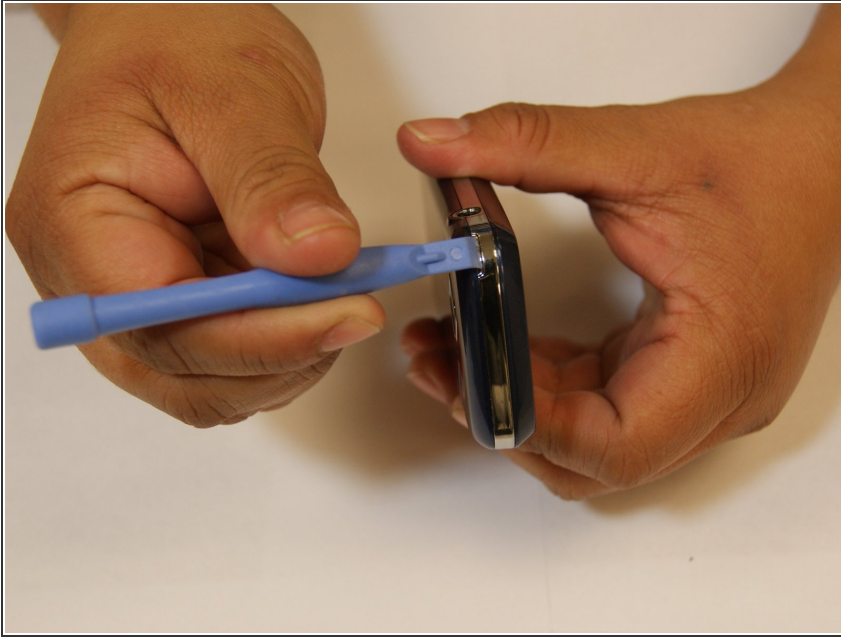
Written By: Jeeseenia Rios



INTRODUCTION

In this guide you will learn how to replace your SIM card. If your current SIM card is not functioning contact your service cellphone service provider to receive a replacement.

Step 1 — Battery



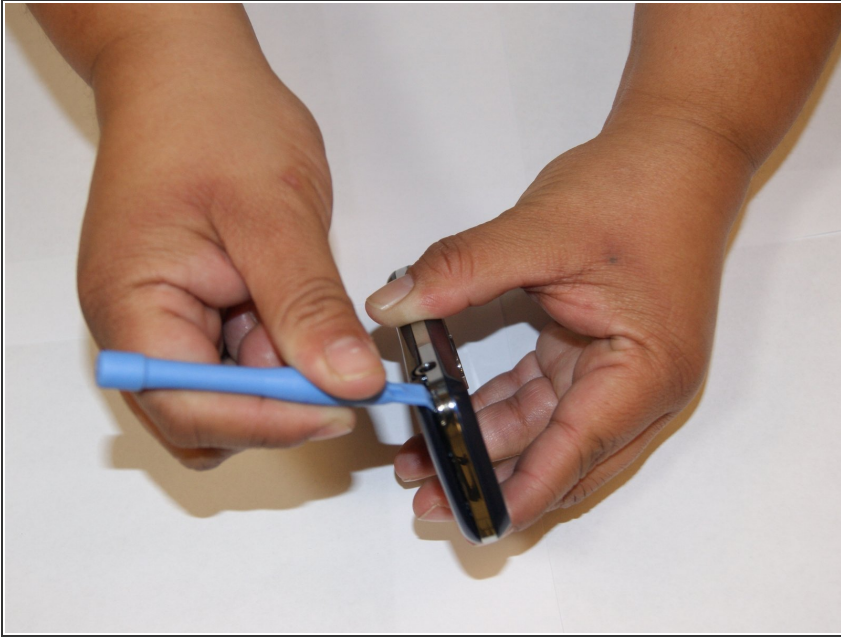
- Remove the back cover using a plastic opening tool. Insert it into each corner starting at the upper left of the back cover and pushing out.
- ⓘ You may also use your finger nail if you do not have a plastic opening tool at hand.

Step 2



- Using a plastic opening tool, push out the battery by inserting it into the small groove at the top left corner of the battery and pushing out.
- The battery snaps out of place and you can remove it using your fingers.
- ★ When you are ready to insert a battery make sure the three copper teeth on the phone are aligned with the 3 copper dents on the battery.

Step 3 — SIM Card



- Remove the back cover using a plastic opening tool. Insert it into each corner starting at the upper left of the back cover and pushing out.
- ⓘ You may also use your finger nail if you do not have a plastic opening tool at hand.

Step 4



- Using your a plastic opening tool, push out the battery by inserting it into the small groove at the top left corner of the battery and pushing out.
- The battery snaps out of place and you can remove it using your fingers.

Step 5



- Remove the SIM card by placing your index finger over it and sliding it out.
- ☞ When you are ready to re-insert the SIM card make sure the pink side facing up.

To reassemble your device, follow these instructions in reverse order.