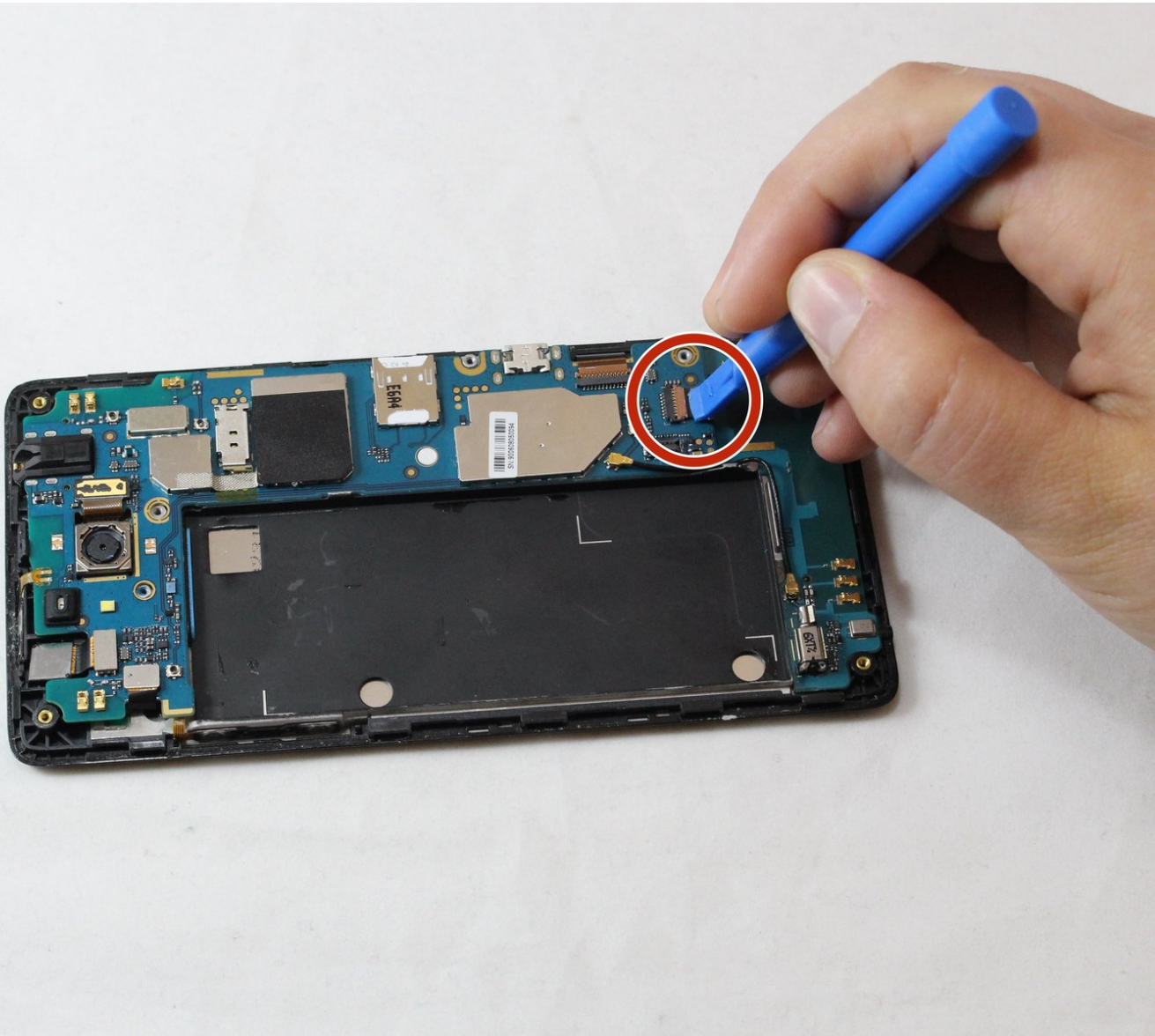




ZTE Tempo Front Screen Assembly Replacement

Front screen is broken and touch screen is not working.

Written By: omar



INTRODUCTION

Front screen is broken and touch screen is not working.



TOOLS:

- [Metal Spudger](#) (1)
 - [iFixit Opening Tools](#) (1)
 - [Tweezers](#) (1)
 - [Phillips #0 Screwdriver](#) (1)
-

Step 1 — Battery



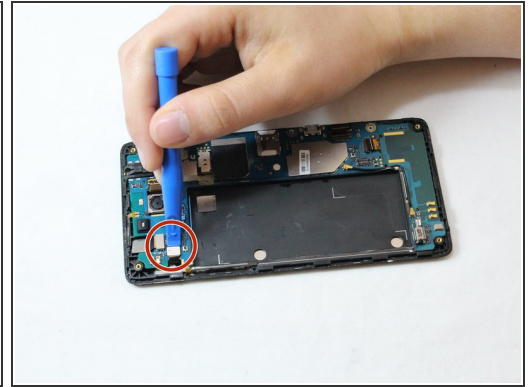
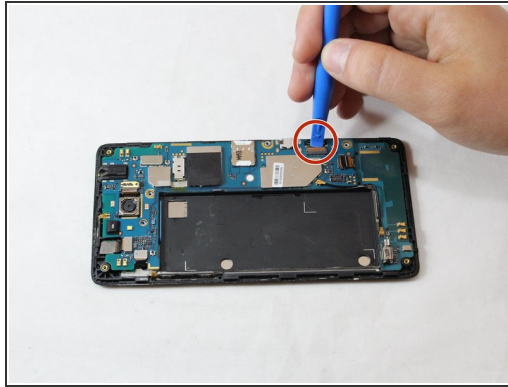
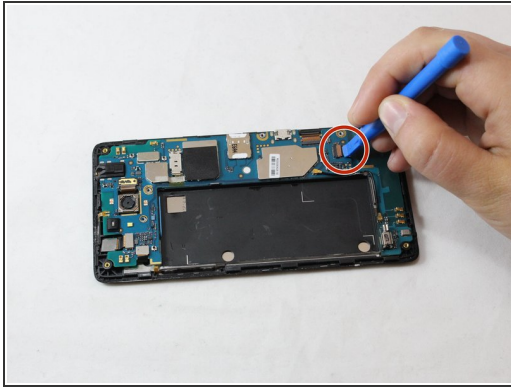
- Pry open the back case to get to the back cover.
 - Remove eight 5mm screws with a PH0 screwdriver.
 - Pry open the back cover with a plastic opening tool.
 - Slide the plastic opening tool alongside the side seam twisting your hand forcefully to open the back cover.
- i** Pry open by finding an edge and forcing it open with the plastic opening tool.

Step 2



- Use a plastic opening tool to lift the press-fit connector up and disconnect the battery ribbon cable.
- Lift the battery up and remove it from the phone.

Step 3 — Front Screen Assembly



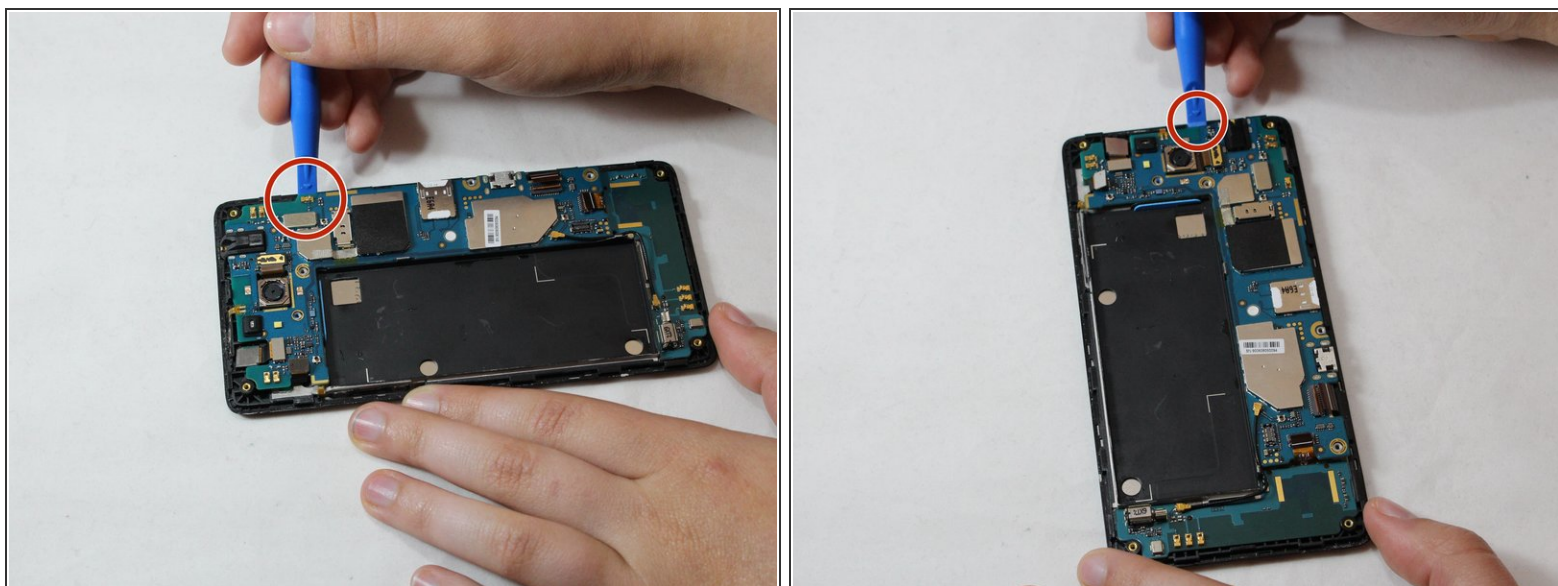
- Unplug three wires by pushing up with the plastic opening tool

Step 4



- Remove the wire by pushing up with the plastic opening tool.

Step 5



- Slide the plastic opening tool alongside the side seam twisting your hand forcefully to open and remove the motherboard.

Step 6



- Push up with the metal spudger to remove the volume control.
- Remove the front speaker and bottom controller board by using the tweezers.

To reassemble your device, follow these instructions in reverse order.