



# ZTE Tempo Rear Camera Replacement

If the back camera is showing a black screen or the camera does not take a picture.

Written By: omar



---

## INTRODUCTION

If the back camera is showing a black screen or the camera does not take a picture.

---



### TOOLS:

- [iFixit Opening Tools](#) (1)
  - [Phillips #0 Screwdriver](#) (1)
-

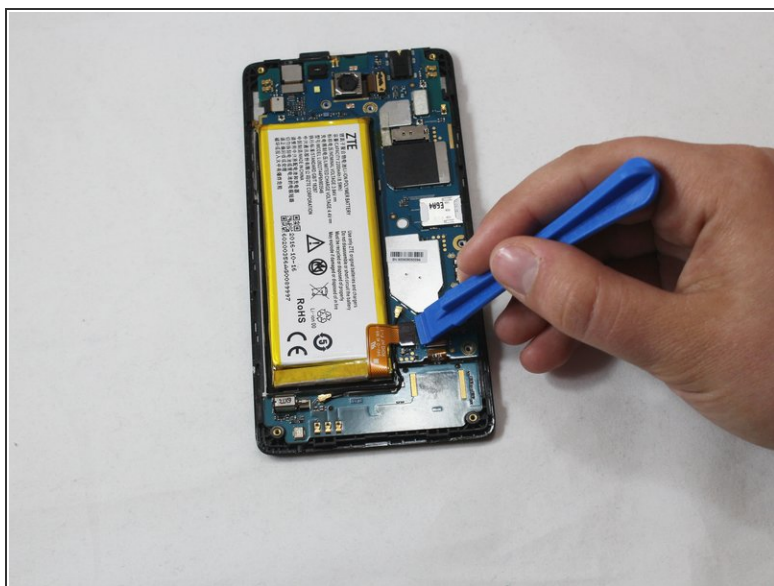
## Step 1 — Rear Camera



- Pry open the back case to get to the back cover.
- Remove eight 5mm screws with a PH0 screw.
- Pry open the back cover with a plastic opening tool.
- Slide the plastic opening tool alongside the side seam twisting your hand forcefully to open the back cover.
- Note: Pry open by finding an edge and forcing it open with the plastic opening tool.



## Step 2



- Use a plastic opening tool to lift the press-fit connector up and disconnect the battery ribbon cable.

## Step 3



- Use a plastic opening tool to lift the press-fit connector up and disconnect the rear camera ribbon cable.
- Lift the rear camera out of the phone.

To reassemble your device, follow these instructions in reverse order.