



ZTE ZFive G LTE Back Camera Replacement

If the camera seems cracked and/or not functioning, this is a quick guide on how to remove the existing camera.

Written By: Julian Mendoza



INTRODUCTION

If the camera seems cracked and/or not functioning, this is a quick guide on how to remove the existing camera.



TOOLS:

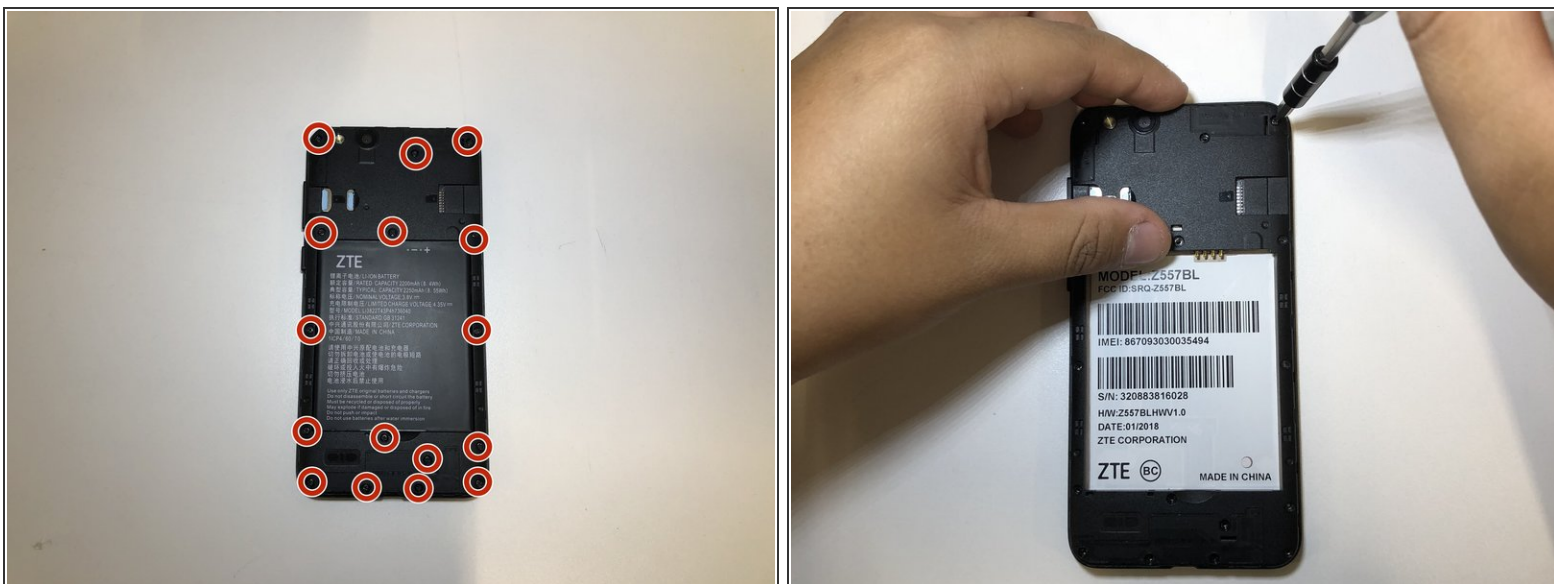
- [iFixit Opening Tools](#) (1)
 - [JIS #000 Screwdriver](#) (1)
-

Step 1 — Back Camera



- Pry open back cover of the device from the crease at the bottom left corner with an opening tool or fingernail.

Step 2



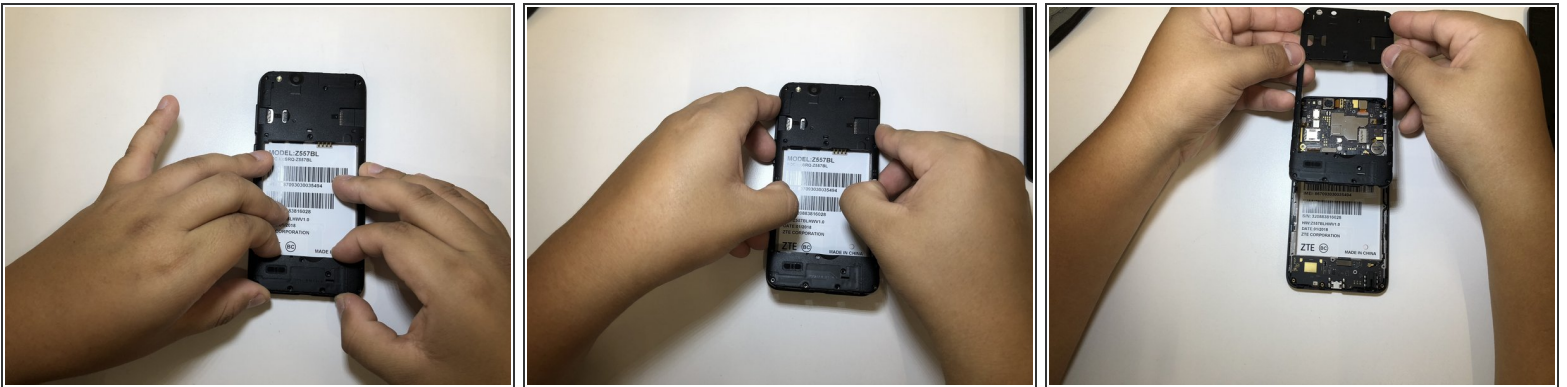
- Remove all 16 screws with a J000 screwdriver.

Step 3



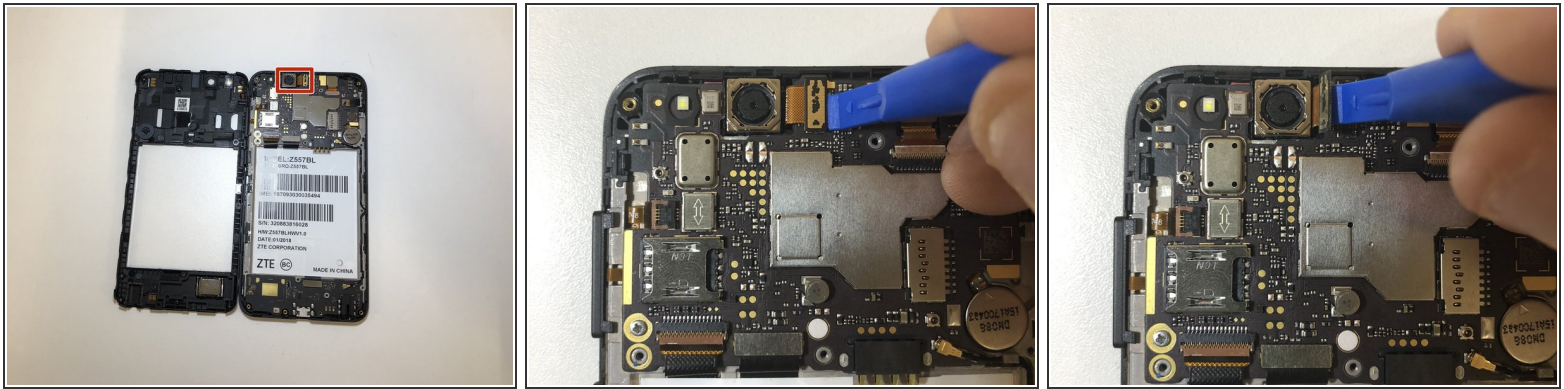
- Remove the battery with an opening tool or fingernail.

Step 4



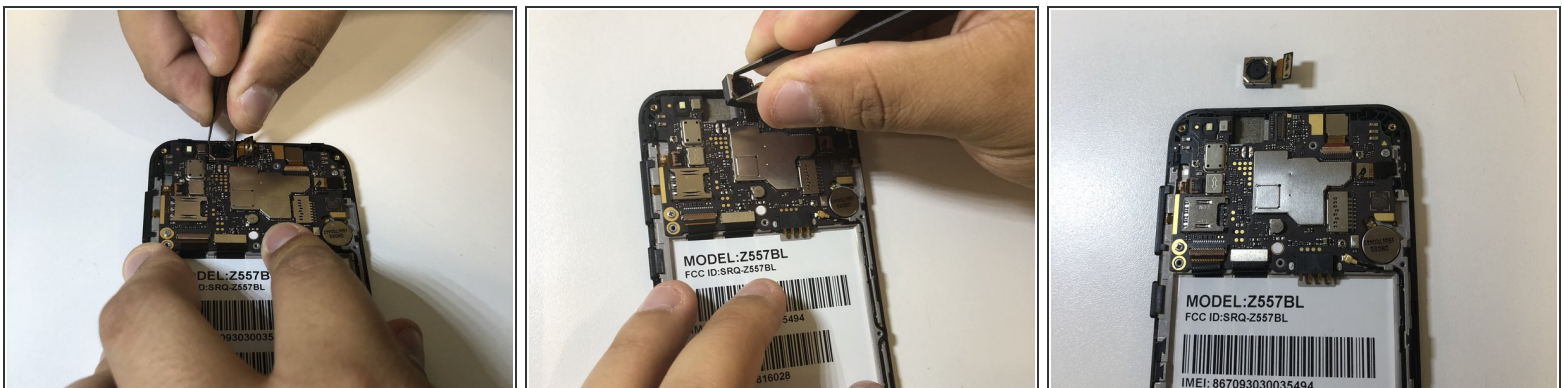
- Gently pry open the device body by tugging from the inside out, be sure to pull up and away from device.

Step 5



- Once body is removed, back-facing camera is placed at the top left corner of device.
- Using an opening tool, pull up the tab of the camera wire ribbon.

Step 6



- Using the blunt-nose tweezers, tug at the camera gently, switching sides to remove adhesive little by little, pull camera out gently.

To reassemble your device, follow these instructions in reverse order.