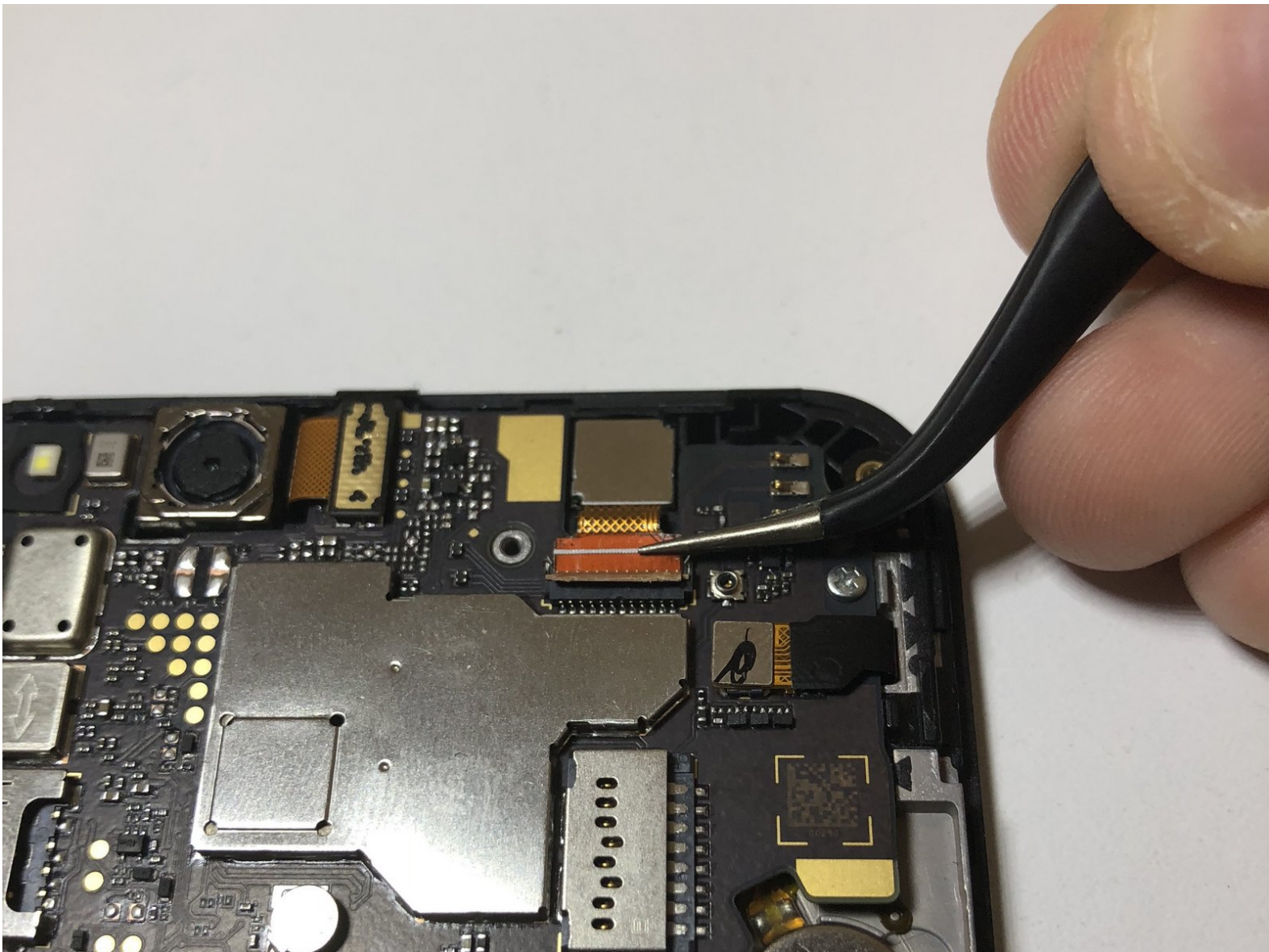




# ZTE ZFive G LTE Front-Facing Camera Replacement

This guide provides the steps necessary to replace the front-facing camera on the ZTE ZFive G LTE.

Written By: Julian Mendoza



This document was generated on 2019-11-26 04:02:57 AM (MST).

---

# INTRODUCTION

This guide provides the steps necessary to replace the front-facing camera on the ZTE ZFive G LTE.

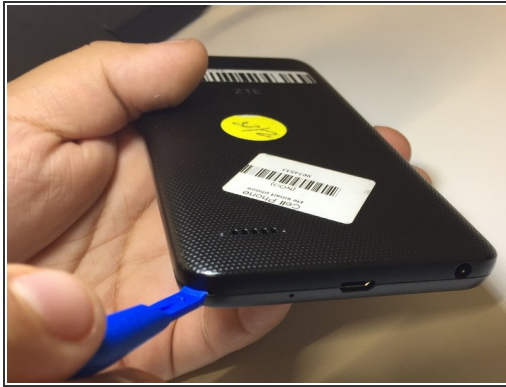
---



## TOOLS:

- [iFixit Opening Tools](#) (1)
  - [Tweezers](#) (1)
  - [JIS #000 Screwdriver](#) (1)
-

## Step 1 — Front-Facing Camera



- Using the opening tool, pry open the rear cover from the crease at the bottom left corner.

## Step 2




- Remove the battery with an opening tool or fingernail.



## Step 3




- Unscrew all 16 screws from the mid-frame J000 screwdriver.

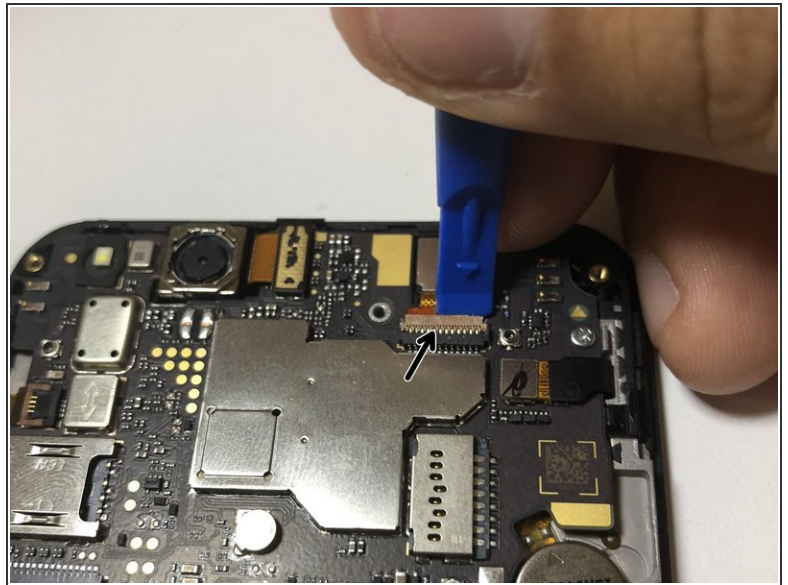
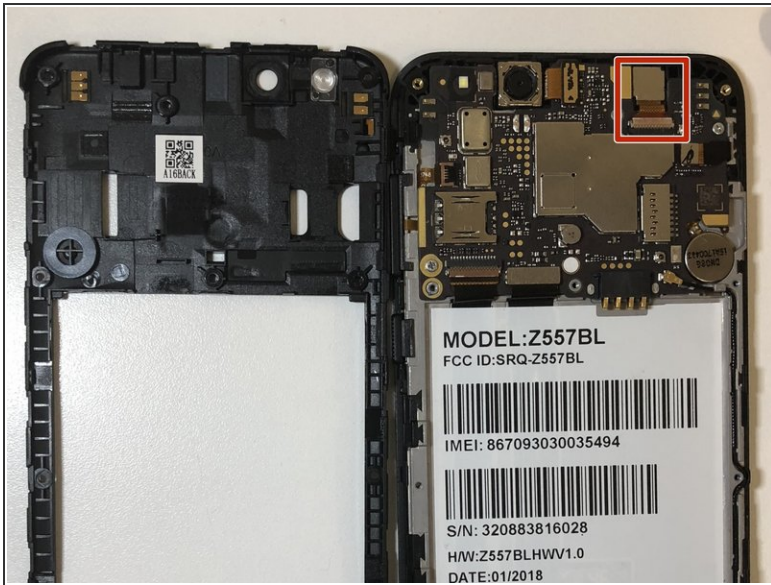
 Set the screws aside.

## Step 4



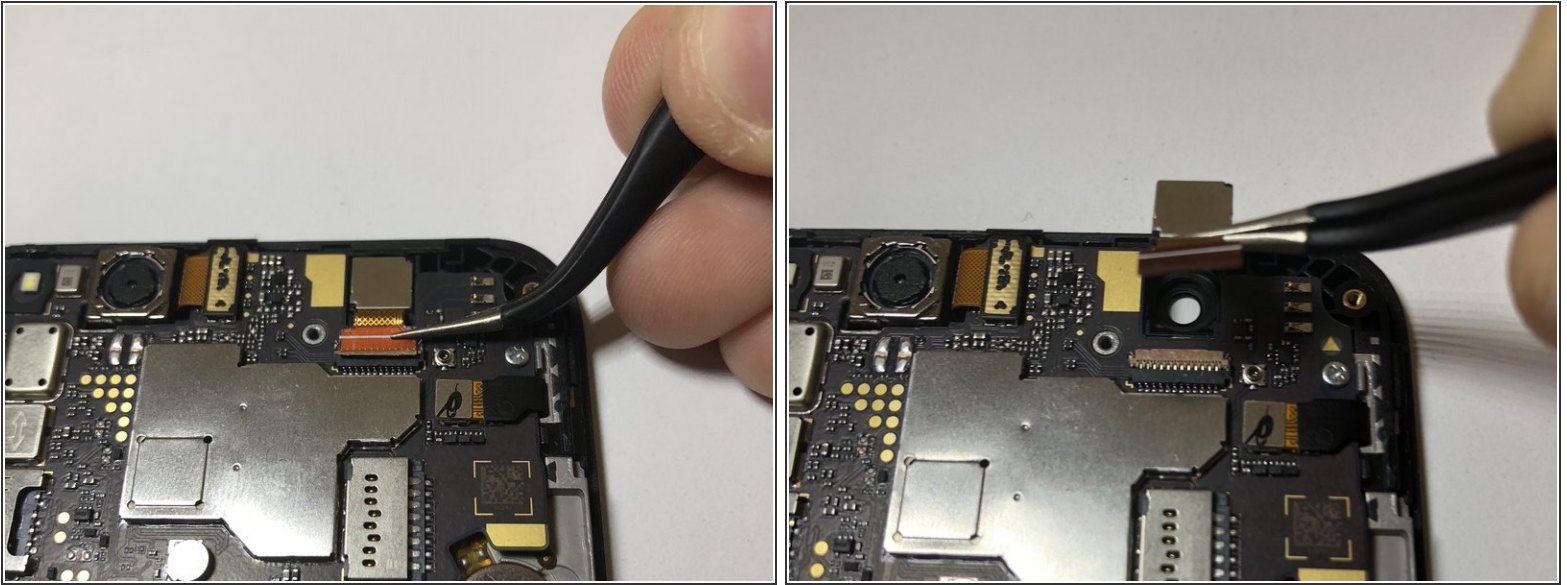
- Gently pull up the device body from the inside.
-  Make sure to pull on all four sides as shown here.

## Step 5



- Once the body is removed, you will see the front facing camera at the top right corner of the device.
- Using an opening tool, lift up the protective clip on top of the camera's ribbon wire.

## Step 6



- Using angled tweezers, gently pull the ribbon wire up from the body.
- ⓘ With the ribbon wire out, you should be able to remove the camera.
- ⚠ If there is adhesive on the camera backing, it may require more force to pull the camera out.

To reassemble your device, follow these instructions in reverse order.