



ZTE ZMAX Z970 Power Button Replacement

Replacing non-functioning ZTE ZMAX Z970 power button.

Written By: Burak Cengiz



INTRODUCTION

This guide will show you how to remove a defective or broken power button on your ZTE ZMAX smart phone.

TOOLS:

- [Tweezers](#) (1)
 - [Spudger](#) (1)
 - [Phillips PH000 Screwdriver](#) (1)
 - [iFixit Opening Tools](#) (1)
-

Step 1 — Battery



- Insert a fine point tool into the hole on the top left side of the phone to remove the SIM and SD card trays.
- Pull out the trays.

Step 2



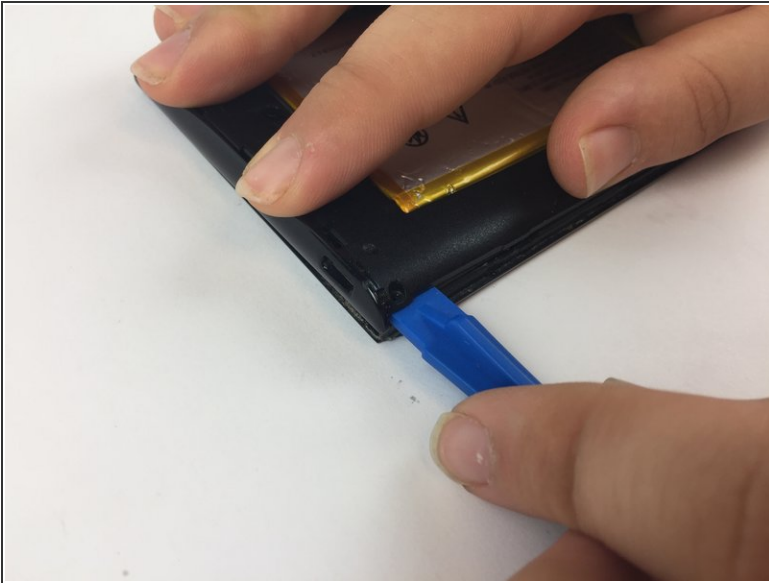
- Insert a plastic opening tool into the groove between the phone's back cover and casing.
- Move the plastic opening tool along the edges of the phone to unclip the two pieces.

Step 3



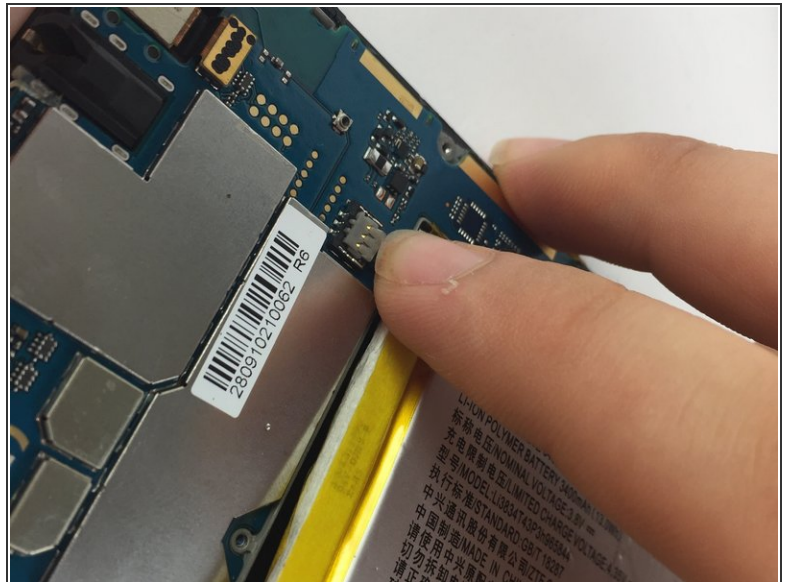
- Remove the ten 1.2mm screws with a Phillips #000 screwdriver.

Step 4



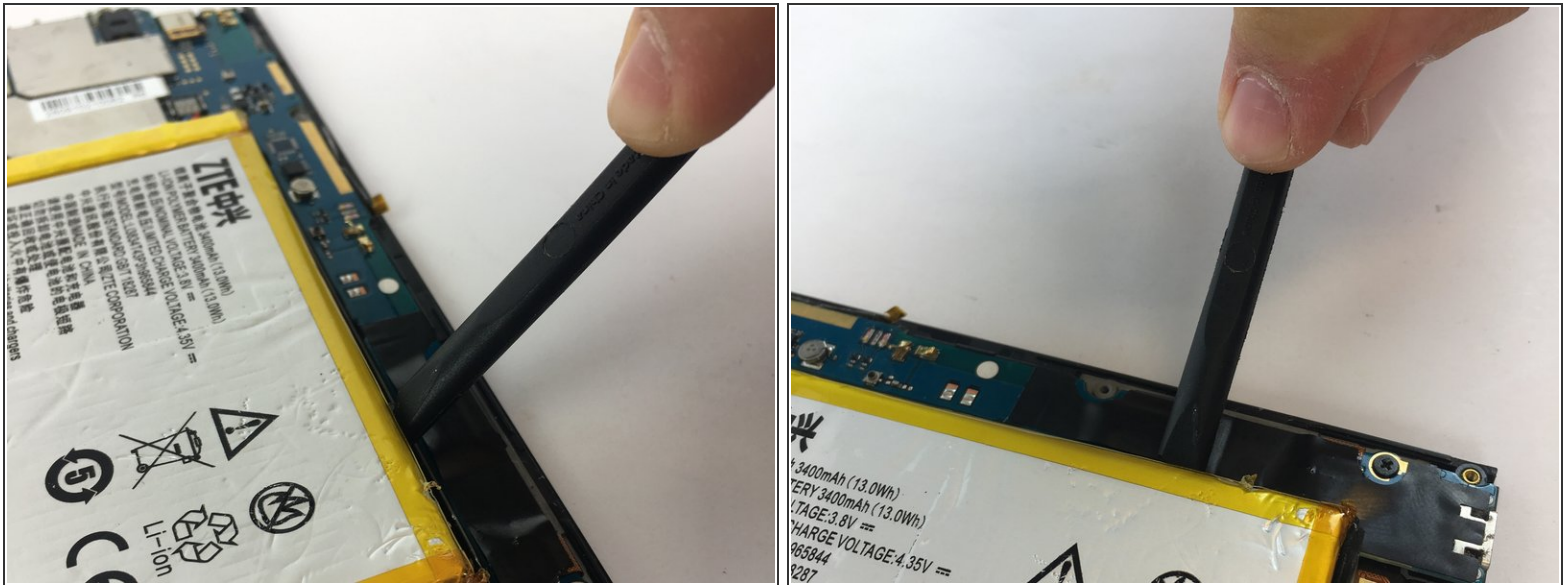
- Remove the mid frame with the plastic opening tool.

Step 5




- Disconnect the battery from the motherboard.

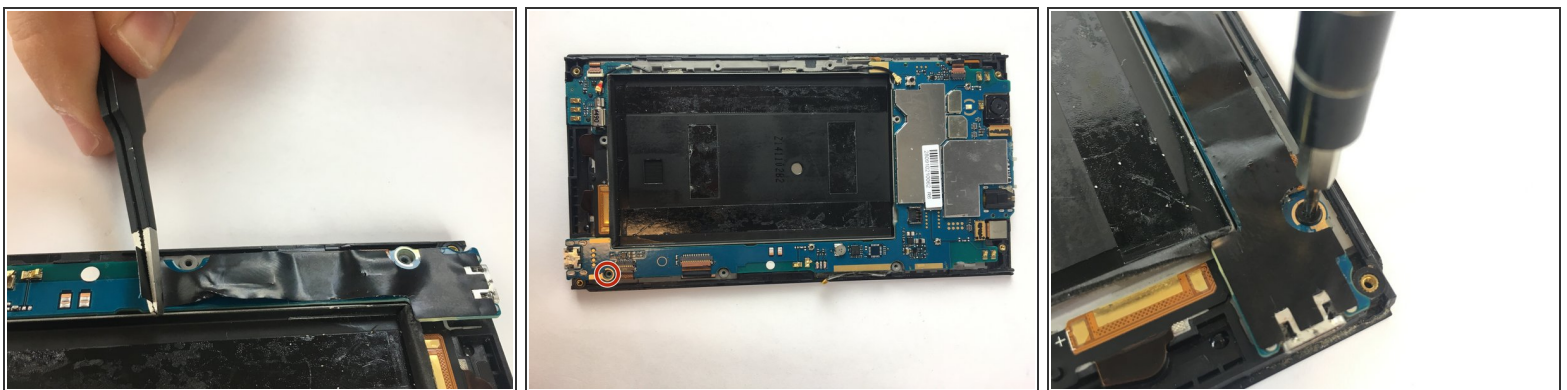
Step 6



- Wedge a spudger underneath the battery and gently pry upwards to remove the battery.
- Once free from the glue, remove from device.

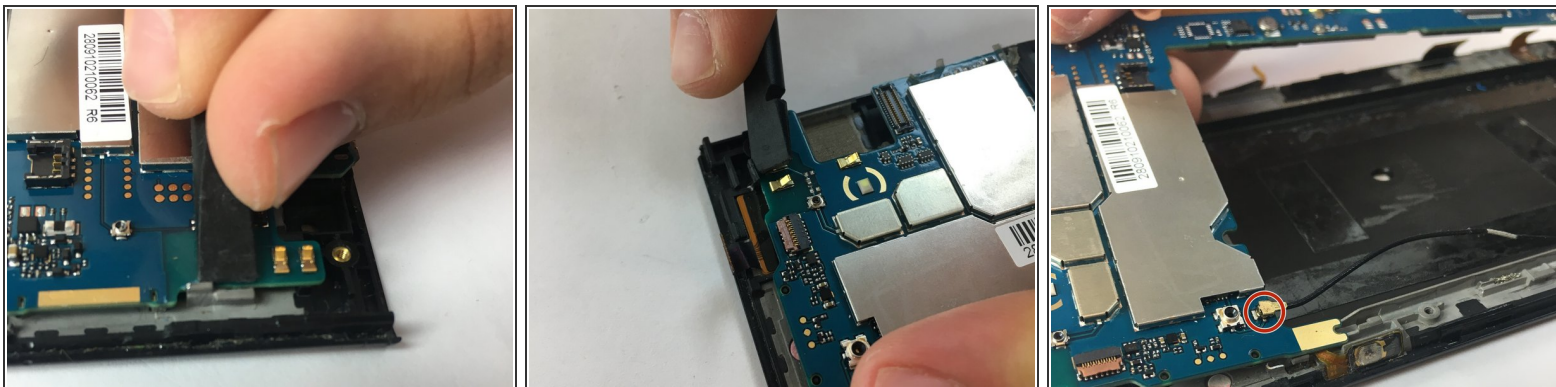
 The glue holding down the battery is strong so work slow and cautiously to avoid starting a fire.

Step 7 — Power Button



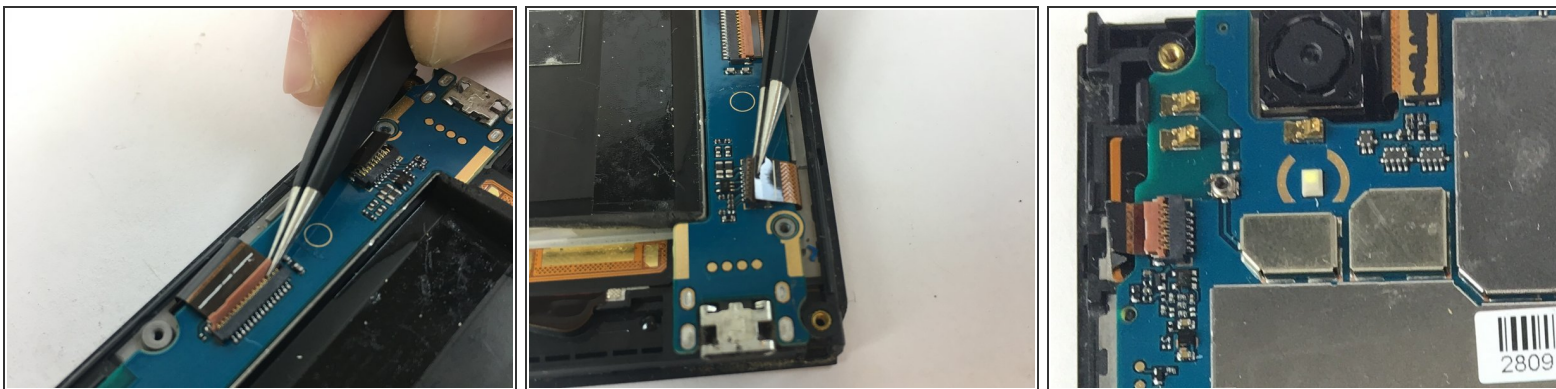
- Remove the black tape covering the motherboard.
- Remove the single 1.2mm screw with a Phillips #000 screwdriver.

Step 8



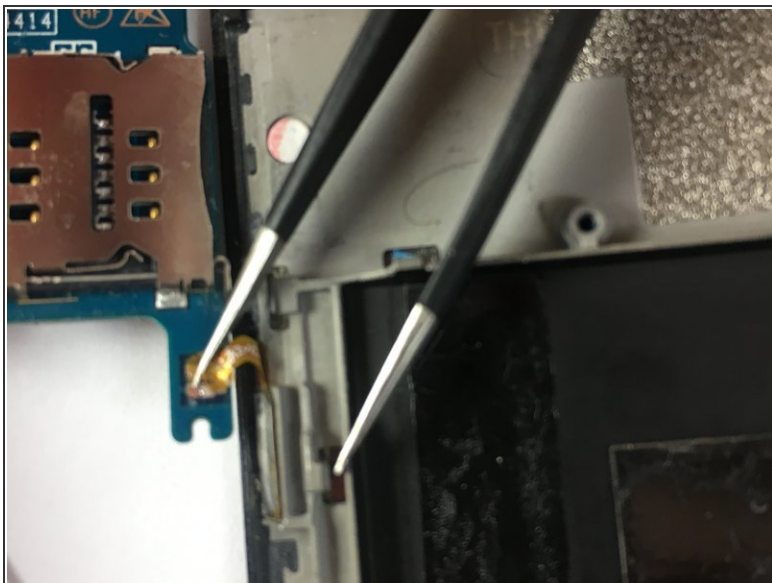
- Use the flat end of the spudger to release the upper left and right prongs that secure the motherboard.
- Detach the antenna cable.

Step 9



- Lift up the tan flap on the three ZIF connectors.
- Pull the ribbon out of the now unlocked ZIF connectors.

Step 10



- Lift the covering panel below the motherboard covering and connecting the power button.
 - Disconnect the circuit tape of the power button and remove the power button.
- i** The power button in these photos has been damaged and not soldered to the motherboard.
- ★** The new power button will have to be desoldered to the mother board.

To reassemble your device, follow these instructions in reverse order.