



ZTE ZMax Pro (Z981) Disassembly

General disassembly of the ZTE ZMax Pro, mainly intended for replacement of the LCD/screen assembly.

Written By: Brennan Murphy



INTRODUCTION

This is a general disassembly, mainly intended for replacement of the LCD / screen assembly. My first guide on iFixit so please be gentle. :) If you are looking for the LCD assembly, we have them available for sale, with fast shipping from California.

TOOLS:

- [iFixit Opening Picks set of 6](#) (1)
- [Tweezers](#) (1)
- [iFixit Opening Tools](#) (1)
- [Phillips #00 Screwdriver](#) (1)
- [Plastic Cards](#) (1)
- [Heat Gun](#) (1)

PARTS:

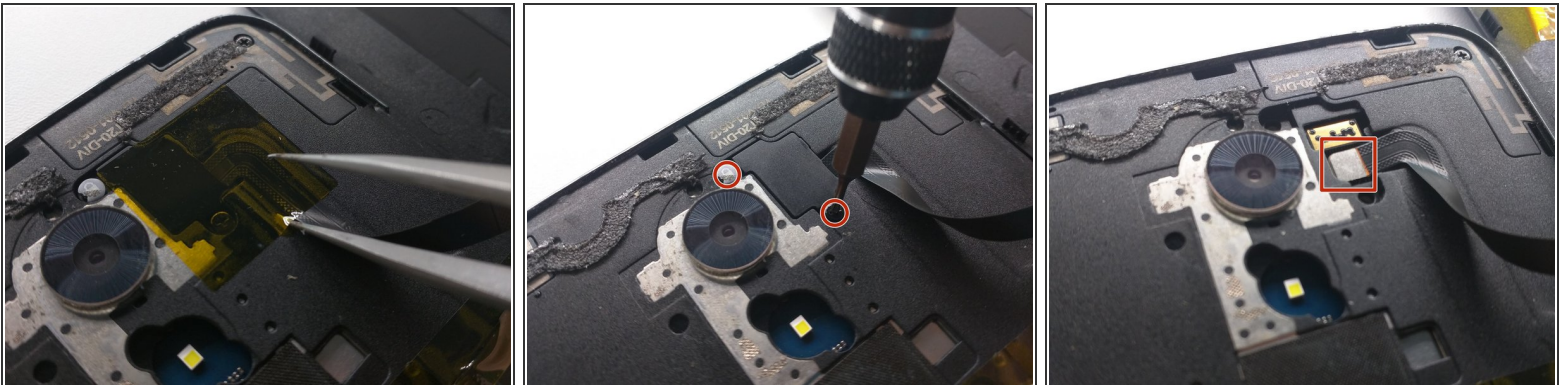
- [ZTE Z981 LCD / Digitizer Assembly](#) (1)

Step 1 — Remove rear cover



- Pry rear cover off starting at the corner
- Continue down the side
- Lift rear cover off

Step 2 — Disconnect fingerprint sensor



- Remove Kapton tape covering fingerprint scanner cover
- Unscrew two screws holding on fingerprint scanner flex cover
- ⚠ Along with that upper screw, there goes your warranty!
- Disconnect fingerprint sensor flex cable and set rear cover aside.


Step 3 — Midframe screws



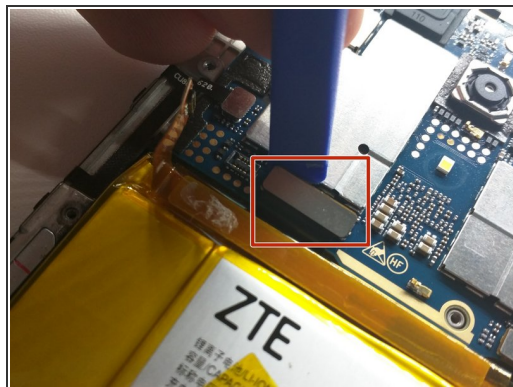
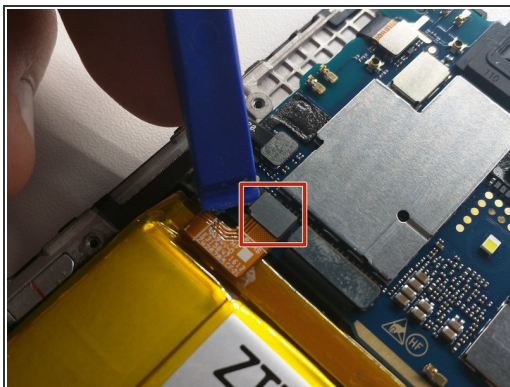
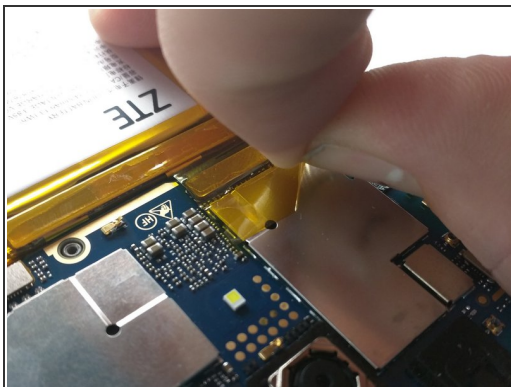
- Remove the 15 Phillips 00 screws securing the midframe to the phone.

Step 4



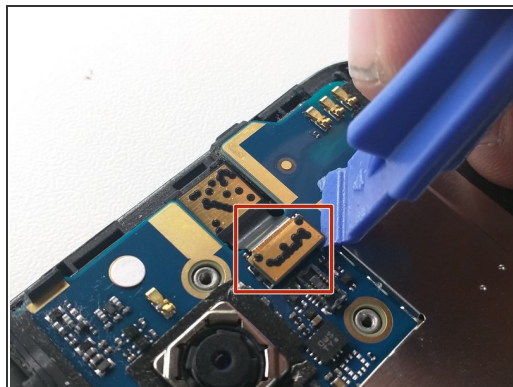
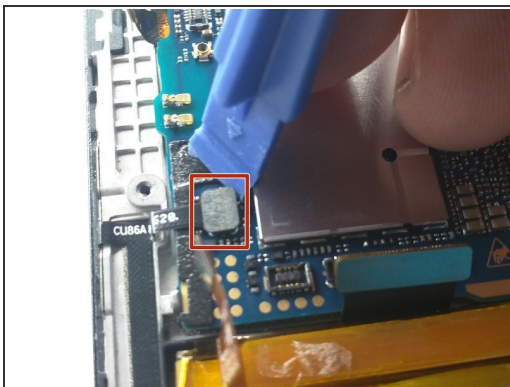
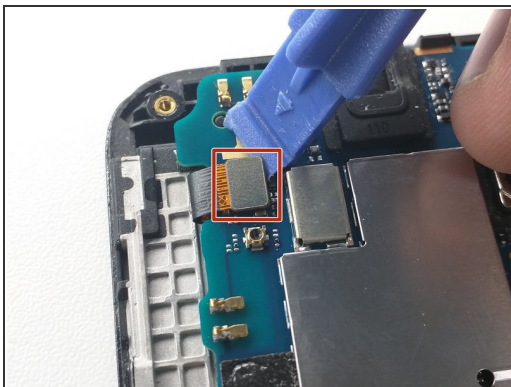
- Carefully insert pry tool on side of phone between LCD and frame
 - Continue down the side the phone and around the edges until frame and LCD assembly are separated
 - Ta-da!
-  Don't laugh at my terrible Photoshop cropping.

Step 5



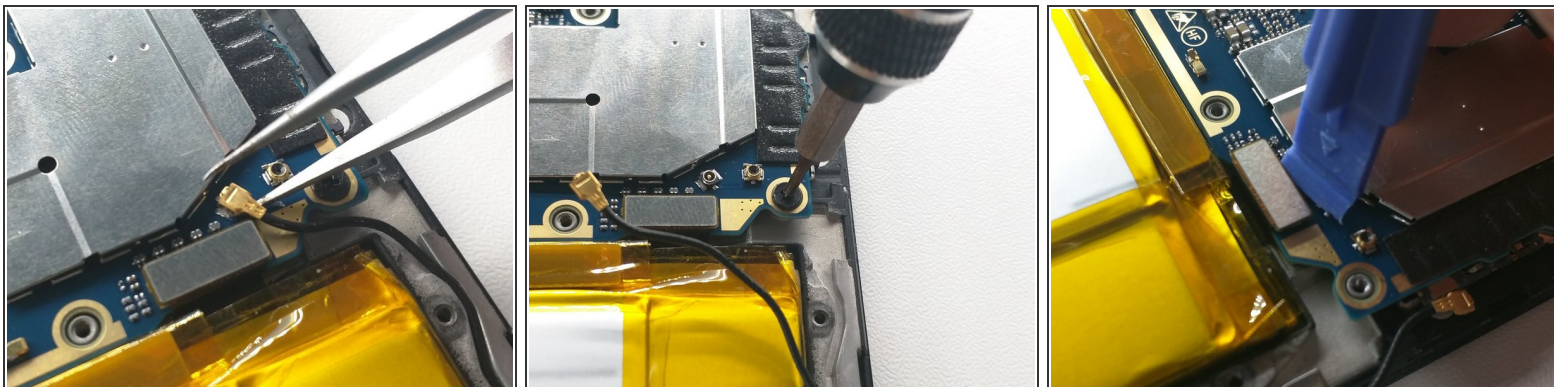
- Remove Kapton tape over battery plug
- Disconnect battery
- Disconnect this other flex cable above the battery, whatever it goes to

Step 6



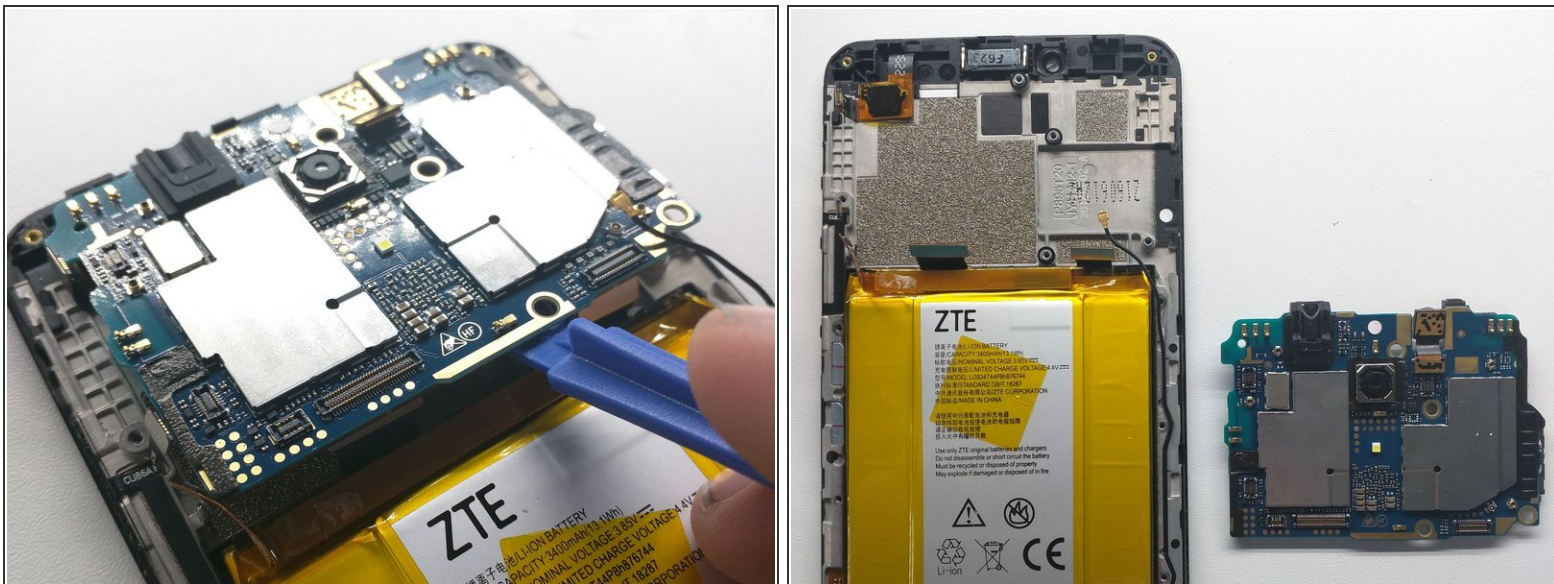
- Disconnect this one
- Now this one
- And this camera one also

Step 7



- Disconnect antenna
- Unscrew motherboard screw
- Disconnect LCD flex cable

Step 8



- Lift out logic board
- Easy
- Now on to the fun part...

Step 9 — Battery Removal



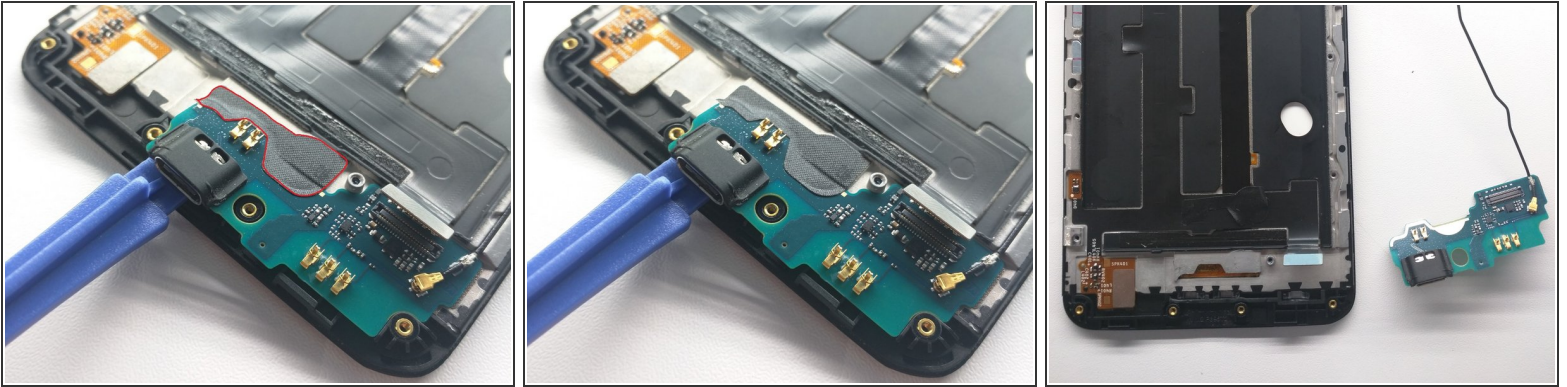
- Heat up battery
 - ⚠ Heating a battery is dangerous and could cause the battery to explode or expand. Use caution.
- Find appropriate tool to pry battery
 - ⚠ Ensure your tool of choice is heat resistant

Step 10



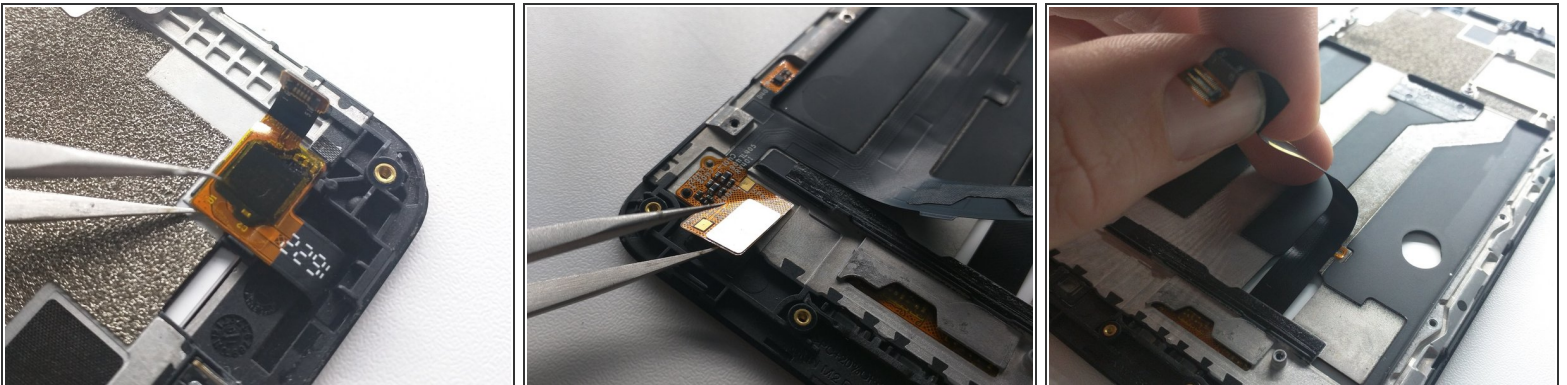
- Once you have found the proper tool, begin prying up on either side of the battery.
 - ⓘ If utilizing a metal ruler, make sure to use a pink one. Other colors of ruler, such as blue or green, are simply not up to the task.
 - ⚠ Be careful not to damage previously disconnected flex cables that run under the battery.
- Finally, bend the battery back into shape so it doesn't look too bad in your photos.

Step 11 — Charging Port Removal



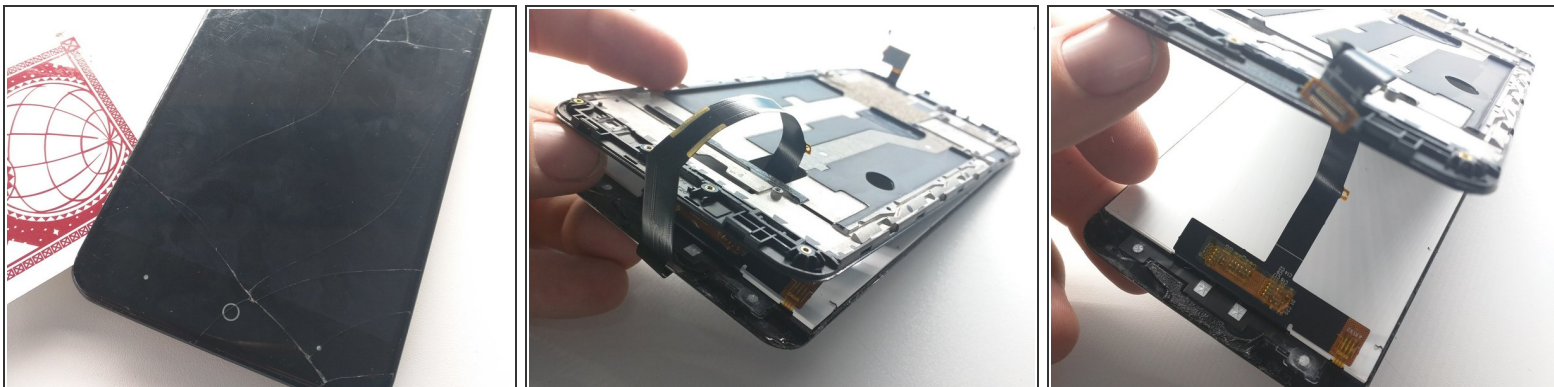
- Remove tape holding charging board down (red outline)
- Pry up charging port / antenna daughterboard.
- Remove from frame and set aside

Step 12



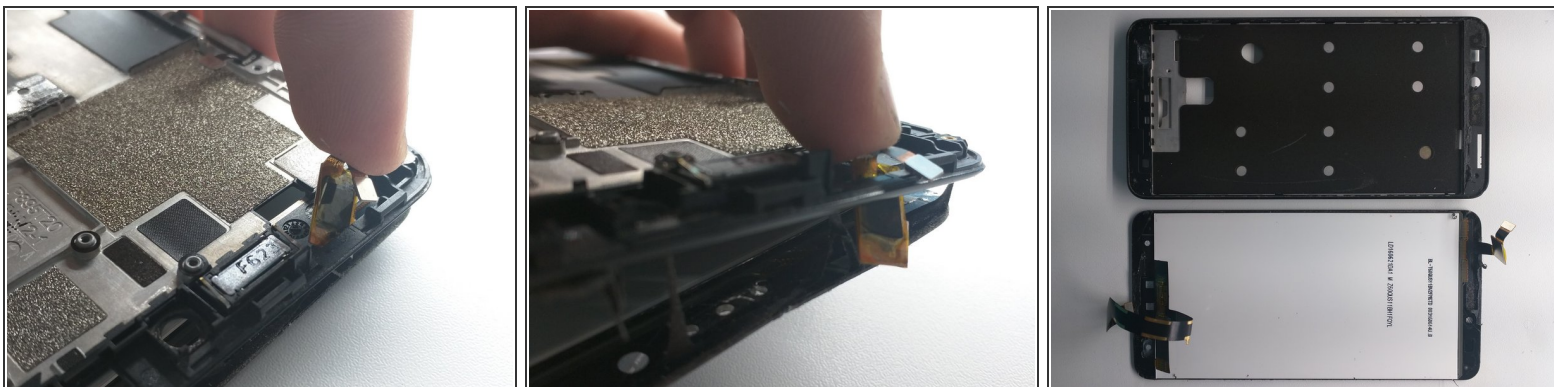
- Lift up digitizer flex cable from frame
- Peel up this flex cable and tweezers it off where it's stuck to the frame
- Peel up the LCD flex cable

Step 13



- Slide something in between the screen and frame.
 - ❗ Make sure to slide it in there real nice
- Separate LCD assembly from frame, starting at the bottom.

Step 14



- Push digitizer flex cable through frame
- Remove LCD assembly from phone

To reassemble your device, follow these instructions in reverse order.