



ZTE ZMax Pro Back Panel Assembly Replacement

How to replace the back panel in the ZTE ZMax Pro.

Written By: Mihir Deshmukh



INTRODUCTION

This guide will show you how to remove the back panel of the device. You will need a plastic opening tool, tweezers, and a #00 Phillips screwdriver in order to remove the back panel of the phone.

TOOLS:

- [iFixit Opening Tools](#) (1)
 - [Tweezers](#) (1)
 - [Phillips #00 Screwdriver](#) (1)
 - [iFixit Opening Picks set of 6](#) (1)
-

Step 1 — Back Panel Assembly



- Flip the phone over so that the back panel of the phone is facing up.
- Wedge the plastic opening tool between the black outer panel and the silver side panel.
- Push down on the plastic opening tool to separate the back panel from the rest of the phone.
- Continue to do this around all sides of the phone until the back panel has popped all the way off.

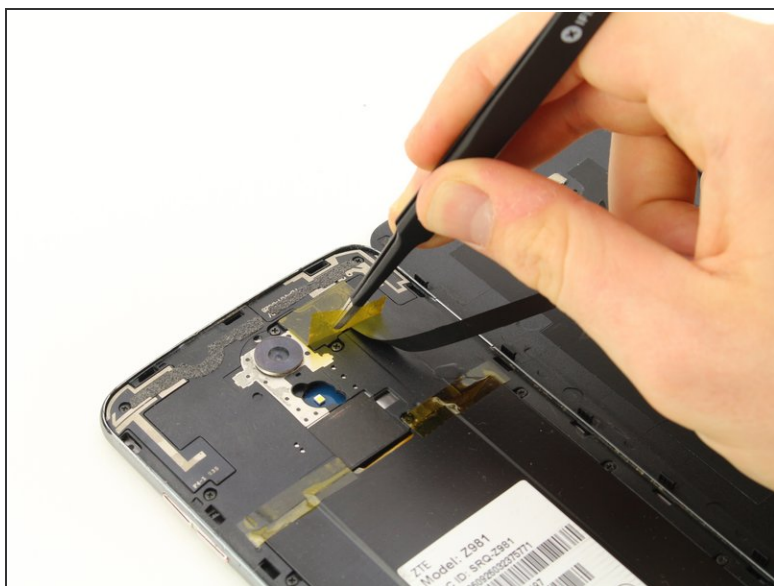
i Removing the back panel may make loud popping noises which is normal.

Step 2



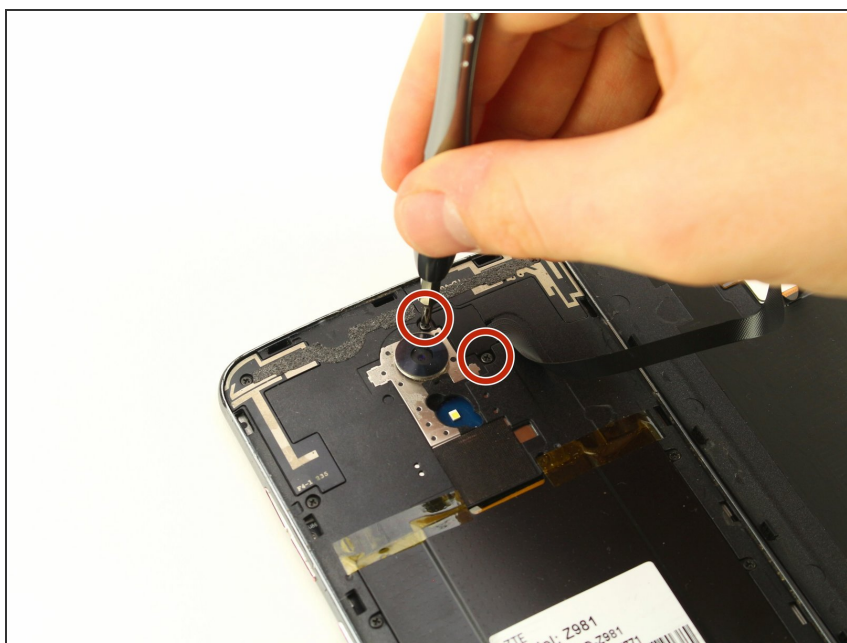
- Using your fingers, slide the SIM card all the way out of the phone.

Step 3



- Remove the yellow Kapton tape by using the tweezers to peel it up and away from the device.

Step 4



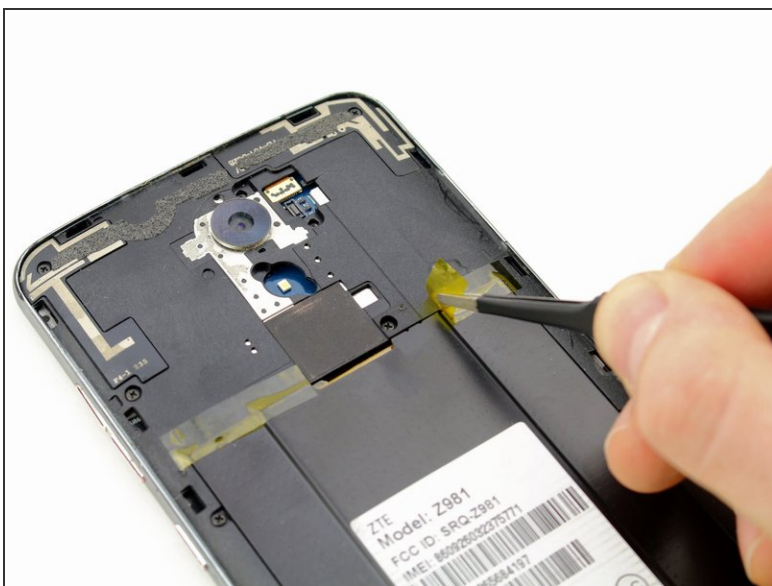
- Using the Phillips #00 screwdriver, remove the two 3.0 mm screws located near the top of the phone, next to the rear camera.

Step 5



- Remove the fingerprint sensor flex cable, using the plastic opening tool to lift it out.

Step 6



- Using the tweezers, peel back the yellow Kapton tape located on the right side of the phone.

Step 7



- Using the Phillips #00 screwdriver, remove the 15, 3.0 mm rear panel screws located around the perimeter of the phone.

Step 8



- Flip the phone over so that the screen is facing up.
 - Wedge the plastic opening tool between the screen and the rear panel.
 - Push up on the opening tool to separate the panel from the phone.
 - Continue to do this around the entire phone until the rear panel is no longer connected to the device.
- i** The rear case and screen are fastened tightly to each other. It might help to use the picks as wedges to keep the case and screen separated as you run the opening tool along the edges.

To reassemble your device, follow these instructions in reverse order.