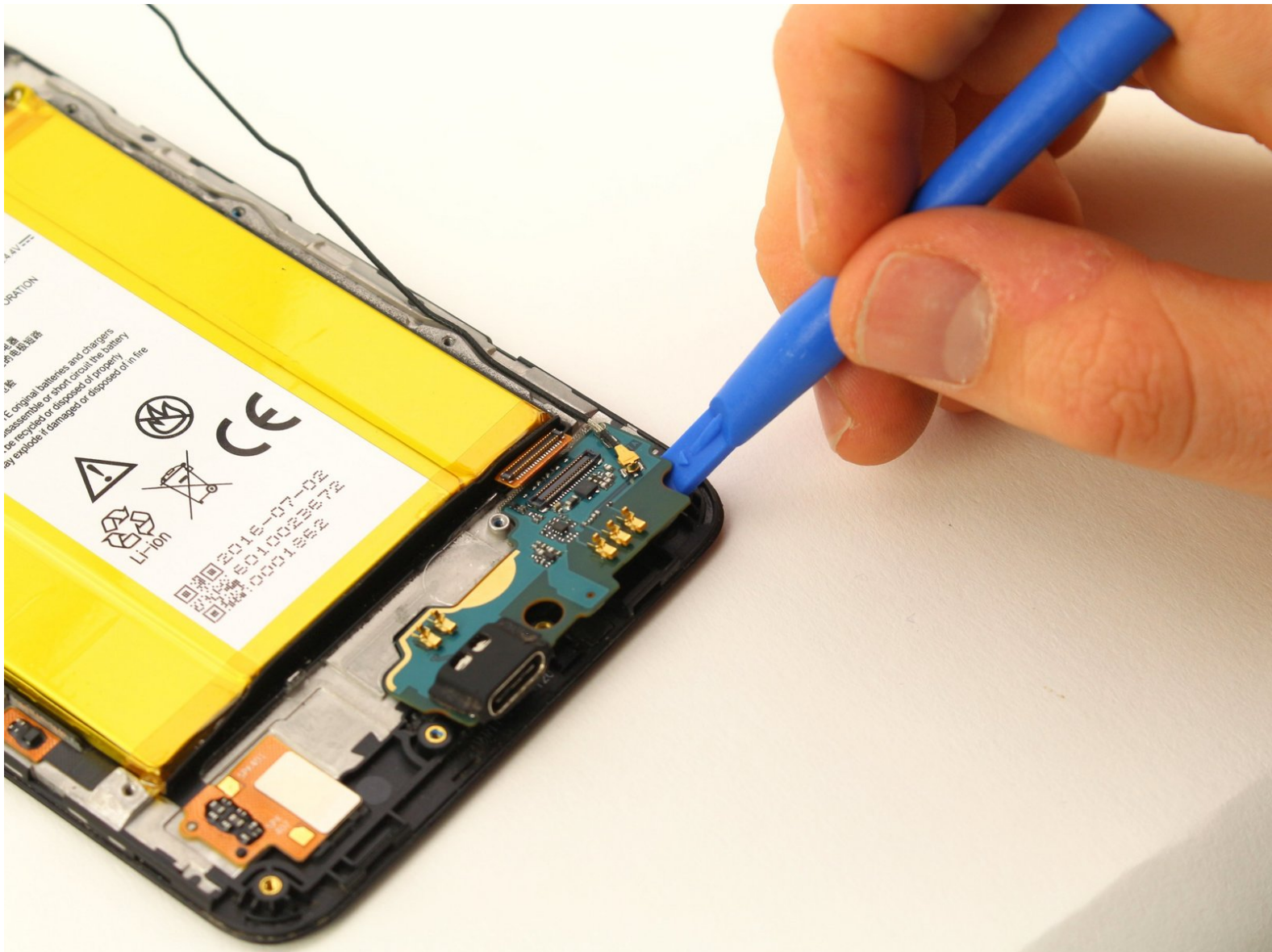




ZTE ZMax Pro Charging Port Replacement

How to replace the charging port in the ZTE ZMax Pro model Z981.

Written By: Nicholas Leacox



INTRODUCTION

This guide will show you how to replace the charging port. You will need a plastic opening tool, tweezers, and a Phillips #00 screwdriver.

TOOLS:

- [iFixit Opening Picks set of 6](#) (1)
 - [iFixit Opening Tools](#) (1)
 - [Tweezers](#) (1)
 - [Phillips #00 Screwdriver](#) (1)
-

Step 1 — Back Panel Assembly



- Flip the phone over so that the back panel of the phone is facing up.
- Wedge the plastic opening tool between the black outer panel and the silver side panel.
- Push down on the plastic opening tool to separate the back panel from the rest of the phone.
- Continue to do this around all sides of the phone until the back panel has popped all the way off.

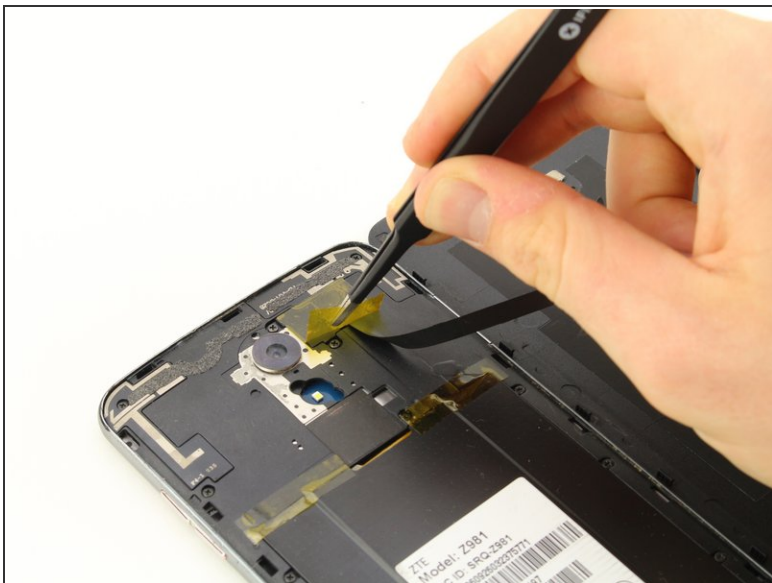
i Removing the back panel may make loud popping noises which is normal.

Step 2



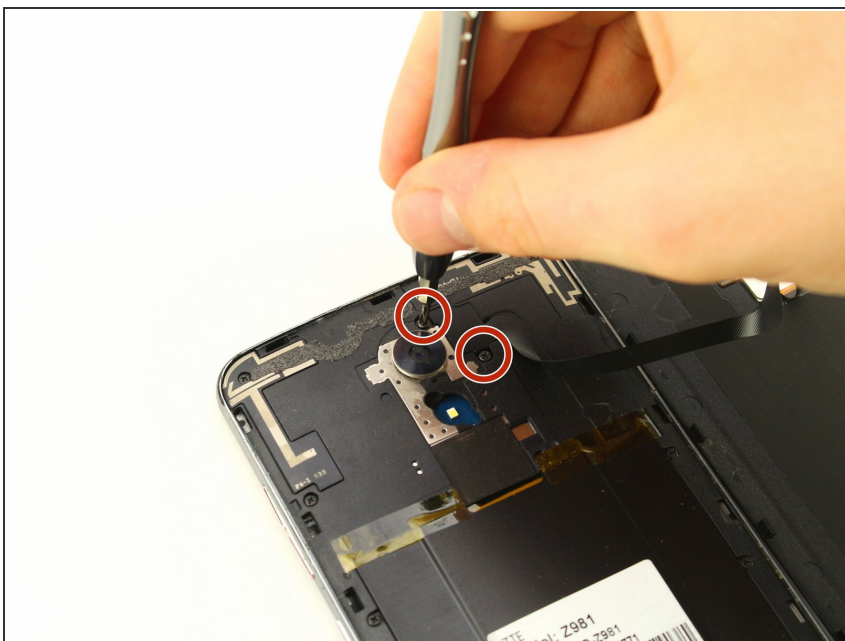
- Using your fingers, slide the SIM card all the way out of the phone.

Step 3



- Remove the yellow Kapton tape by using the tweezers to peel it up and away from the device.

Step 4



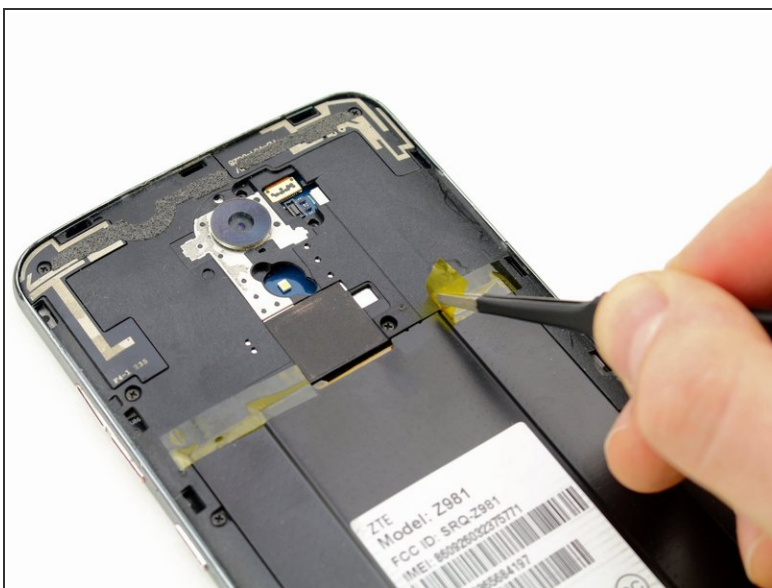
- Using the Phillips #00 screwdriver, remove the two 3.0 mm screws located near the top of the phone, next to the rear camera.

Step 5



- Remove the fingerprint sensor flex cable, using the plastic opening tool to lift it out.

Step 6



- Using the tweezers, peel back the yellow Kapton tape located on the right side of the phone.

Step 7



- Using the Phillips #00 screwdriver, remove the 15, 3.0 mm rear panel screws located around the perimeter of the phone.

Step 8



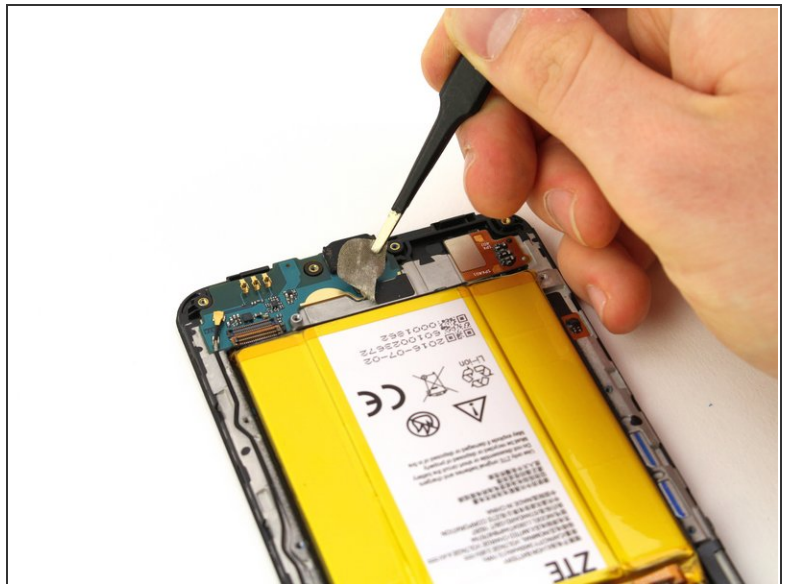
- Flip the phone over so that the screen is facing up.
 - Wedge the plastic opening tool between the screen and the rear panel.
 - Push up on the opening tool to separate the panel from the phone.
 - Continue to do this around the entire phone until the rear panel is no longer connected to the device.
- i** The rear case and screen are fastened tightly to each other. It might help to use the picks as wedges to keep the case and screen separated as you run the opening tool along the edges.

Step 9 — Charging Port



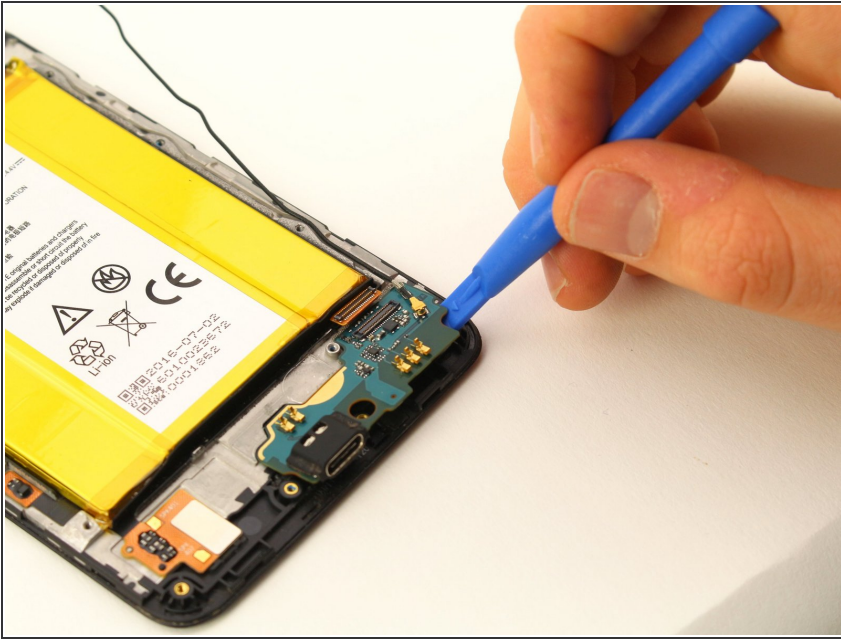
- Use tweezers to remove the antenna.

Step 10



- Use tweezers to peel off the tape at the bottom of the phone.

Step 11



- Wedge the plastic opening tool under the charging port board at the bottom of the phone.
- Push down on the plastic opening tool so the board pulls away from the phone.
- Continue to do this around the charging port board until it comes all the way off the phone.

i The board is glued to the case so make sure to work around all edges to ease removal. Trying to pull it away from one edge can cause damage to the board.

★ After removing the charging port, the adhesive will not have as strong of a hold on the new charging port. This should not be an issue. However, if the adhesive strength is negligible, you can consider buying adhesive and applying it before inserting the new charging port.

To reassemble your device, follow these instructions in reverse order.