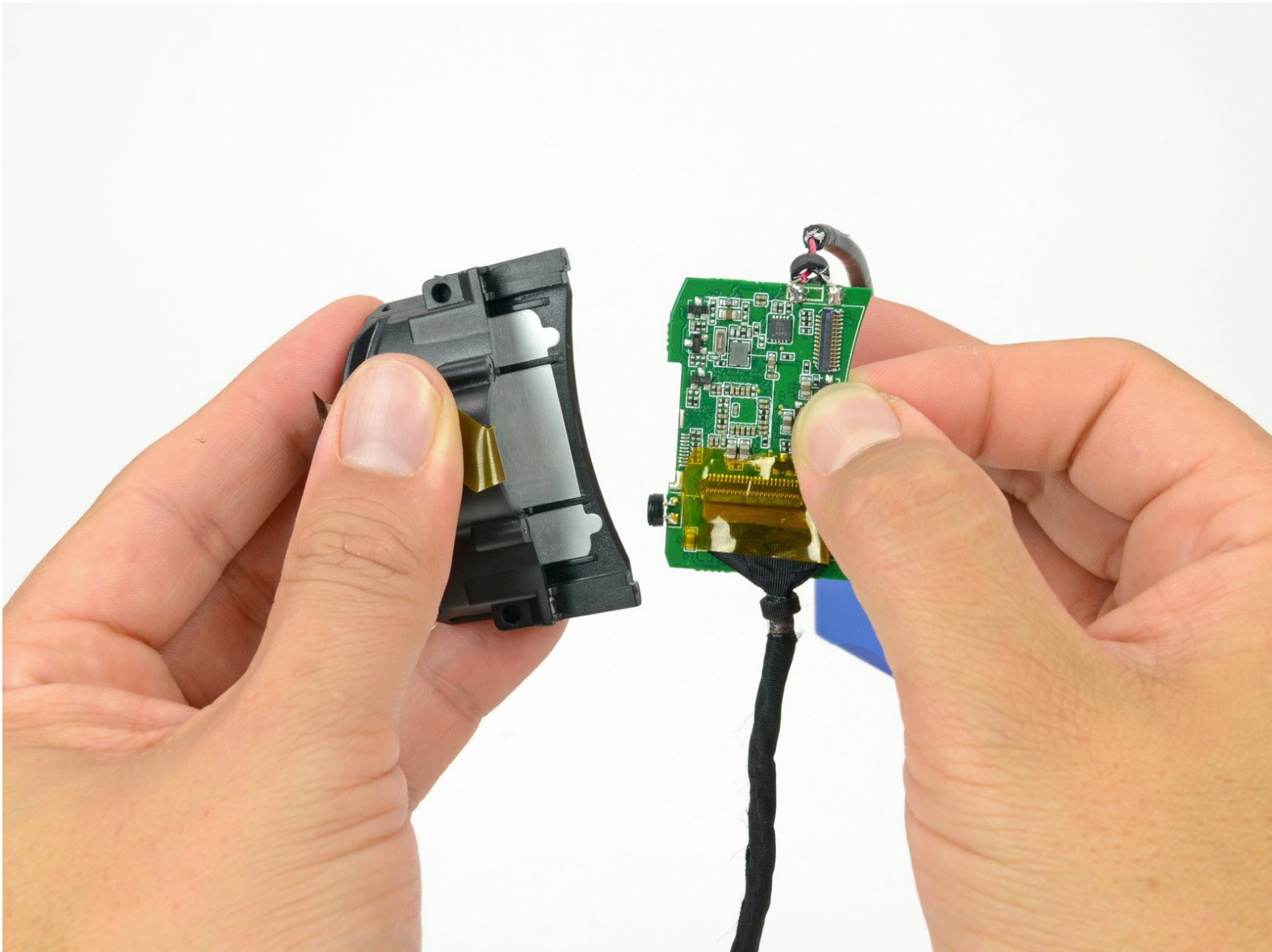




Zeal Optics iON Motherboard Assembly Replacement

Zeal iON motherboard assembly prerequisite.

Written By: David Hodson



INTRODUCTION

This guide is a prerequisite for removing any components attached to the motherboard.



TOOLS:

- [Phillips #00 Screwdriver](#) (1)
 - [Spudger](#) (1)
-

Step 1 — Motherboard Assembly



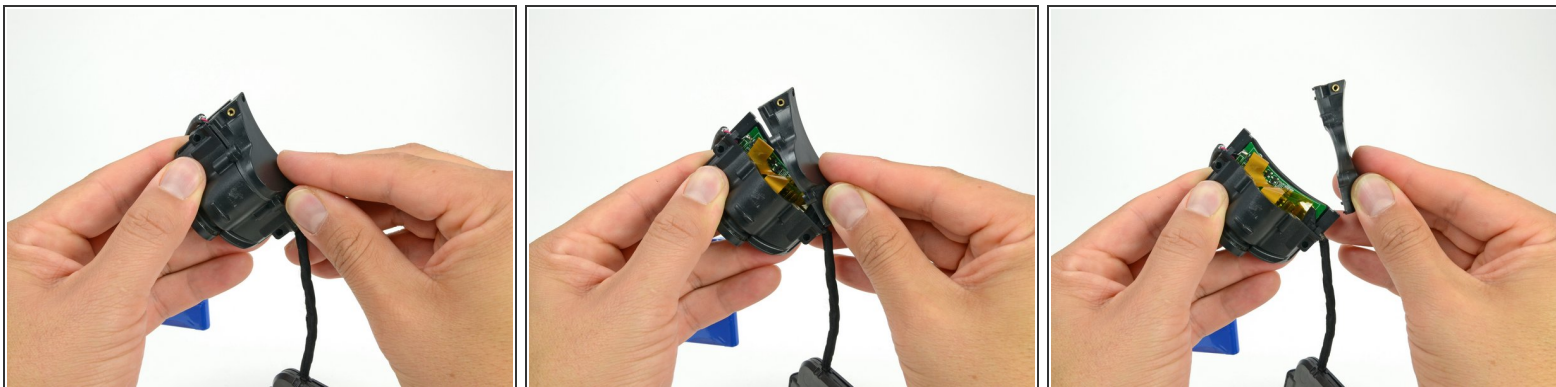
- Remove the following four screws securing the back cover of the camera housing:
 - two silver 8.5 mm screws,
 - two black 8.8 mm screws.

Step 2



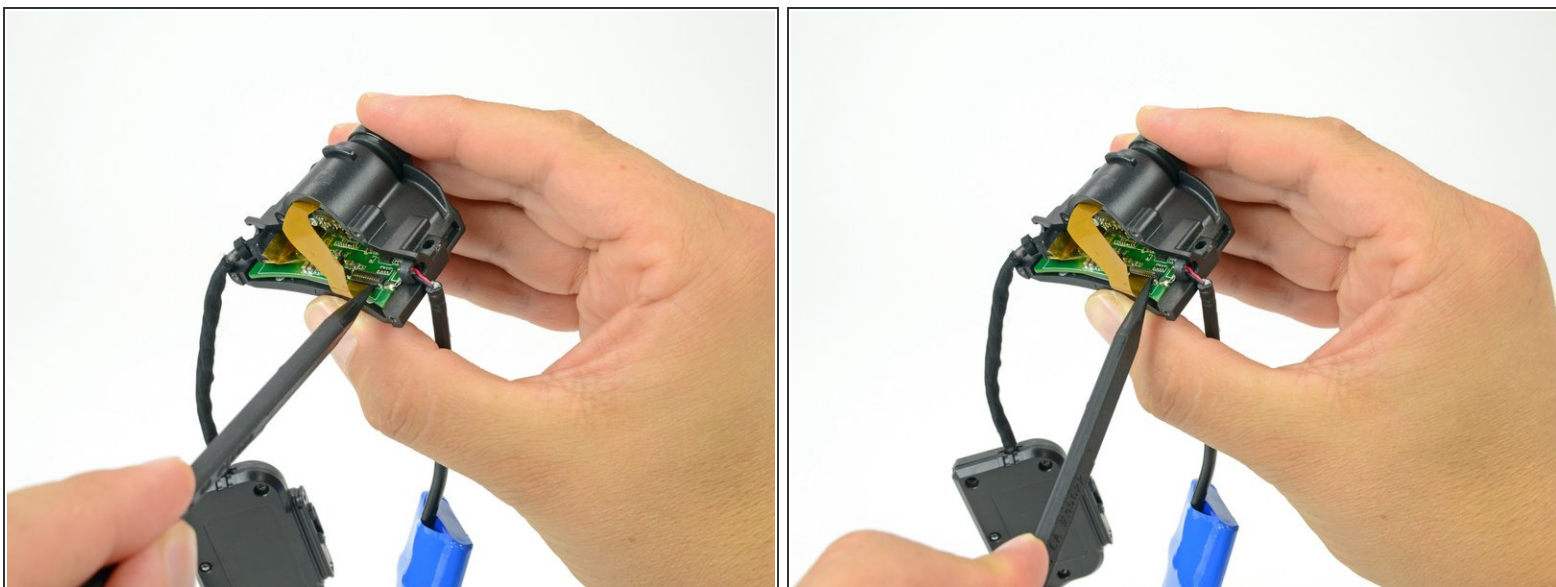
- Peel the white sticker off the bottom of the camera housing.

Step 3



- Lift the back cover off the camera housing and remove it.

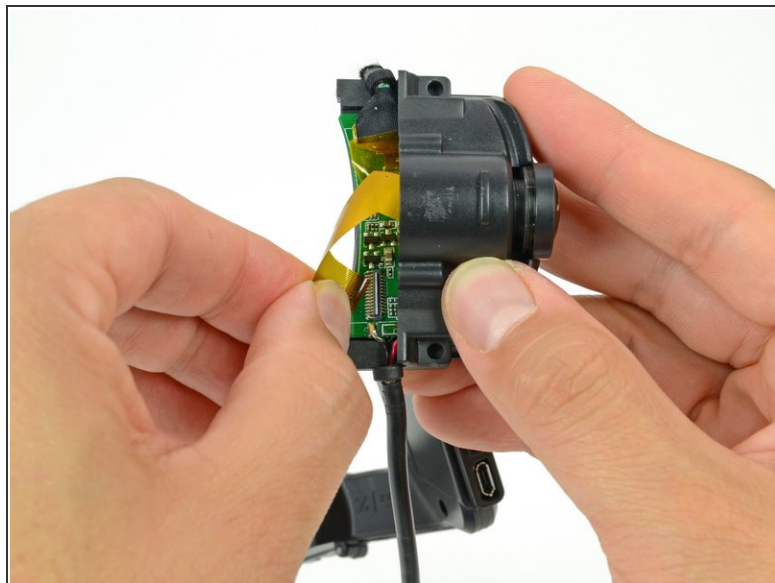
Step 4



- Use the tip of a spudger to pry up the retaining flap of the camera sensor cable ZIF connector on the motherboard.

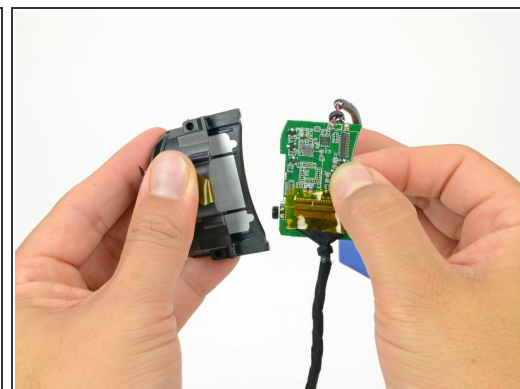
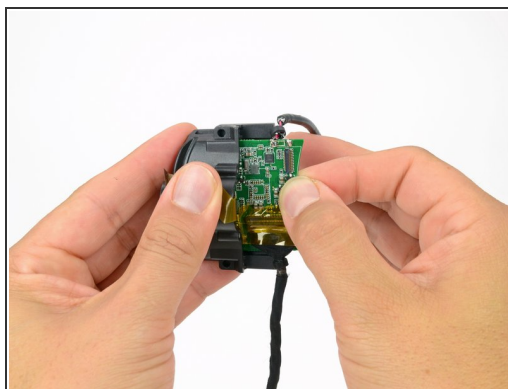
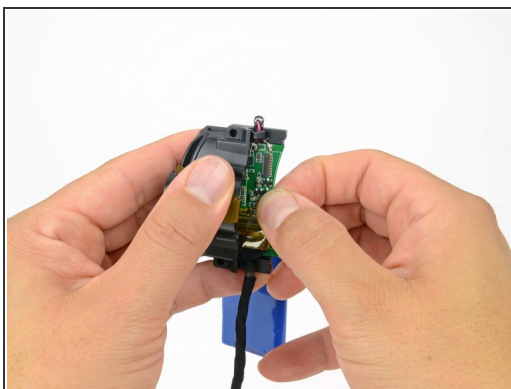
⚠ Be sure that you are prying up on the hinged flap, **not** the connector itself.

Step 5



- Pull the camera sensor ribbon cable straight out of its connector on the motherboard.

Step 6



- Grab the edge of the motherboard and gently slide it out of the camera housing.
- ⓘ There may be some resistance due to the foam pad along the bottom of the camera housing.

To reassemble your device, follow these instructions in reverse order.