



Zeal Optics iON Viewfinder Lens Assembly Replacement

Prerequisite to removing the viewfinder lens and/or LCD.

Written By: Eric Flores



INTRODUCTION

This guide is a prerequisite to removing the viewfinder lens and/or LCD.



TOOLS:

- [Phillips #00 Screwdriver](#) (1)
 - [Spudger](#) (1)
 - [Tweezers](#) (1)
-

Step 1 — Viewfinder Lens Assembly



- Remove the two 7.5 mm Phillips screws on the front of the viewfinder housing.
- ⓘ Flip the viewfinder housing over 180 degrees.
- Remove the four 7.1 mm Phillips screws from the back of the viewfinder housing.

Step 2



- Pull the two halves of the viewfinder housing apart.

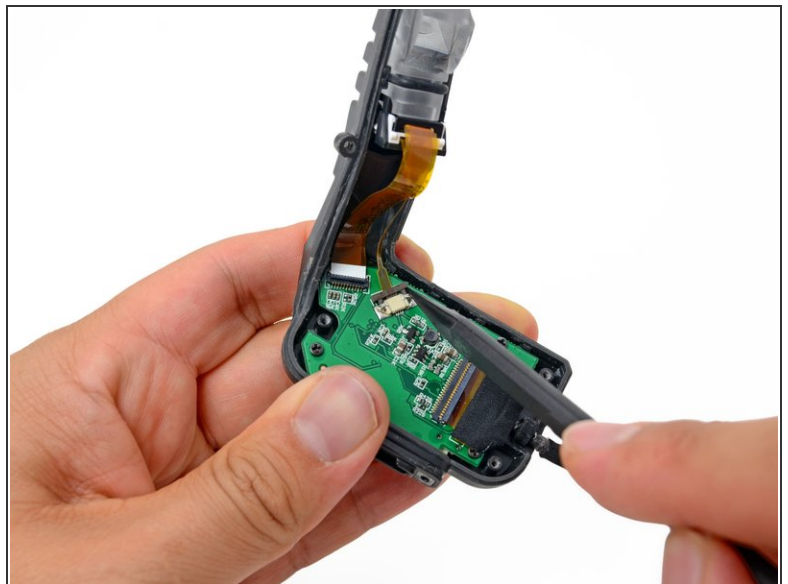
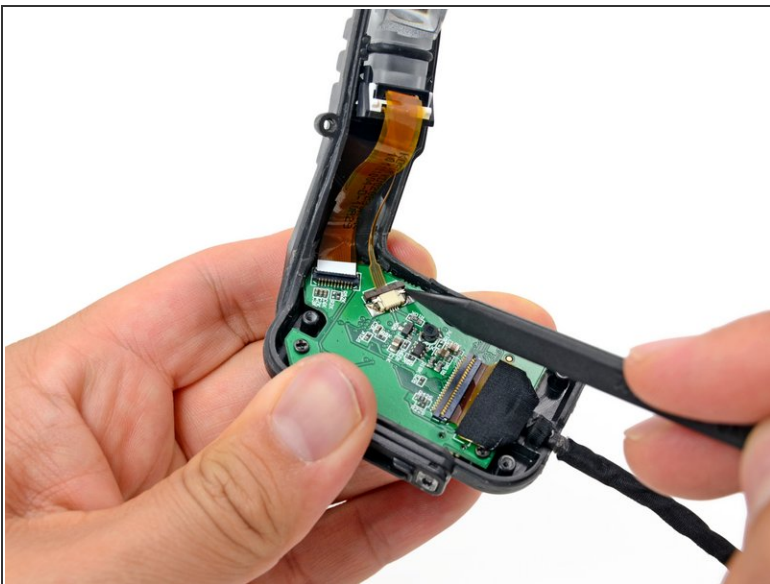
Step 3



- Use the tip of a spudger to flip up the retaining flap on the LCD ribbon cable ZIF connector.

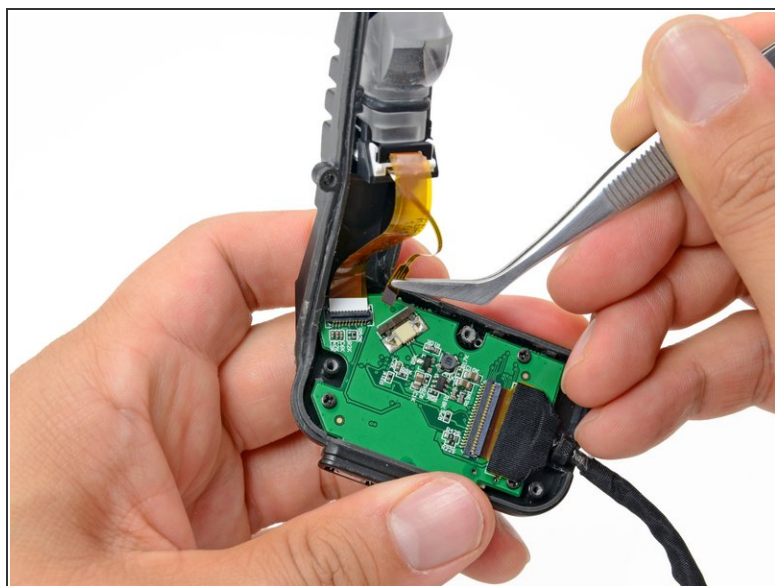
⚠ Be sure to pry up on the hinged flap, **not** the connector itself.

Step 4



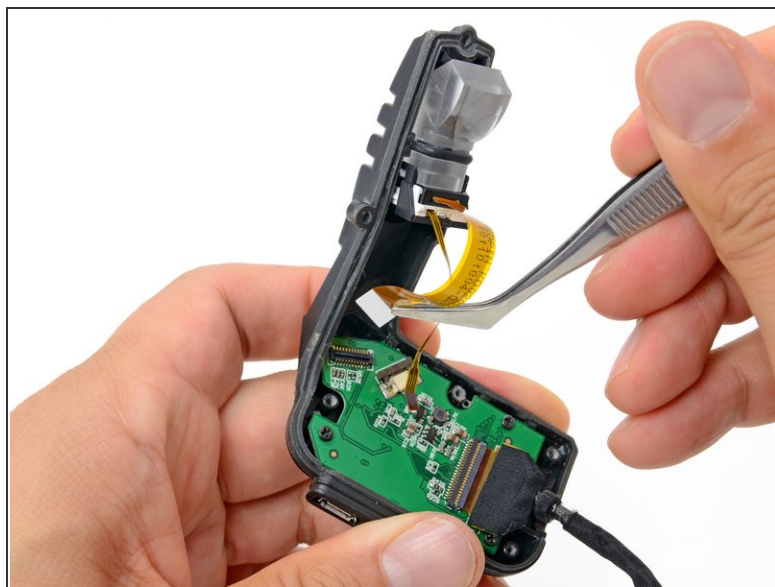
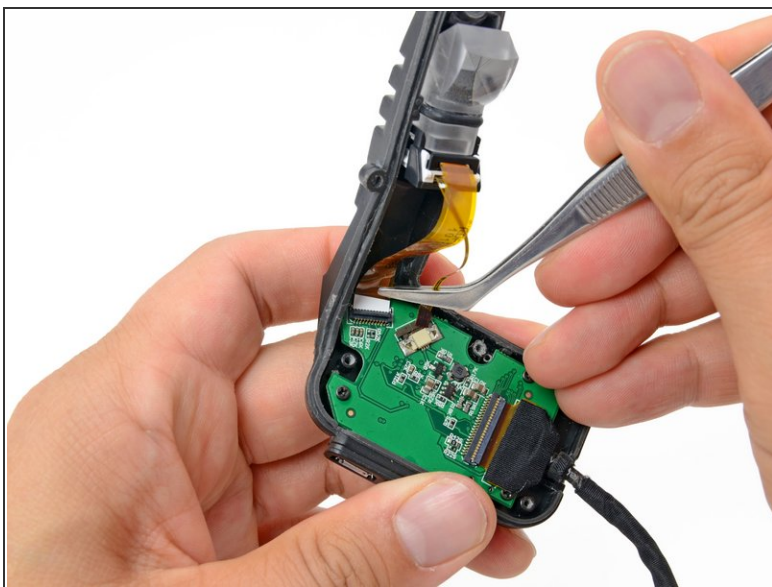
- Use the tip of a spudger to push out the retaining clip on the viewfinder backlight ribbon cable ZIF connector.

Step 5



- Using your fingers or tweezers, gently pull out the backlight ribbon cable from its connector on the button board.

Step 6



- Using your fingers or tweezers, remove the LCD ribbon cable from its connector on the button board.

Step 7



- Remove the viewfinder lens assembly from the viewfinder housing.

To reassemble your device, follow these instructions in reverse order.