



# Zebra ZP 505 Feed Key Replacement

Follow these steps to replace the ZP 505 feed key.

Written By: Brian Jagger



## INTRODUCTION

Use the following guide to remove the ZP 505 feed key using a phillips head screwdriver set.



### TOOLS:

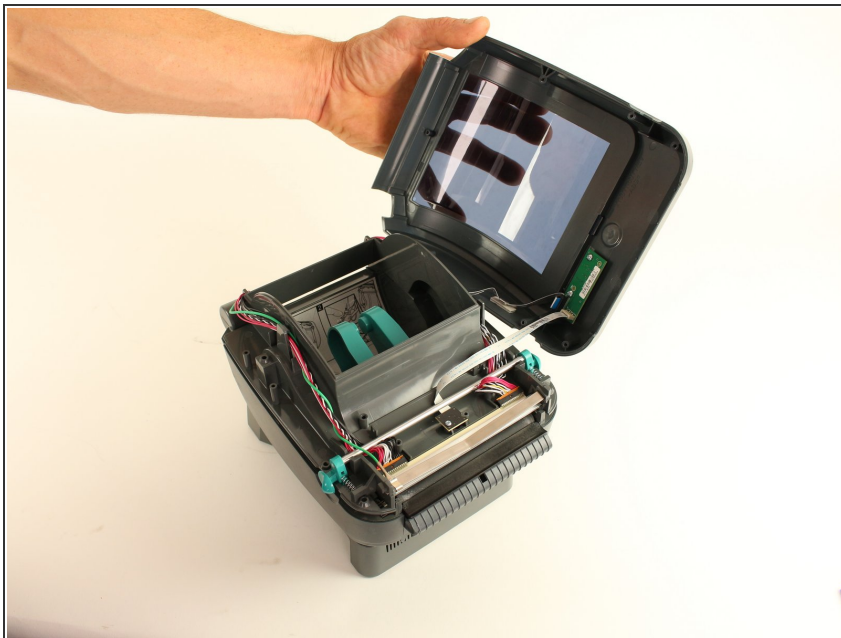
- [Phillips #0 Screwdriver](#) (1)
  - [Phillips #1 Screwdriver](#) (1)
-

## Step 1 — Feed Key



- Remove the following screws securing the top case to the ZP 505.
  - Six P1 9.0mm
  - One P0 19.0mm

## Step 2



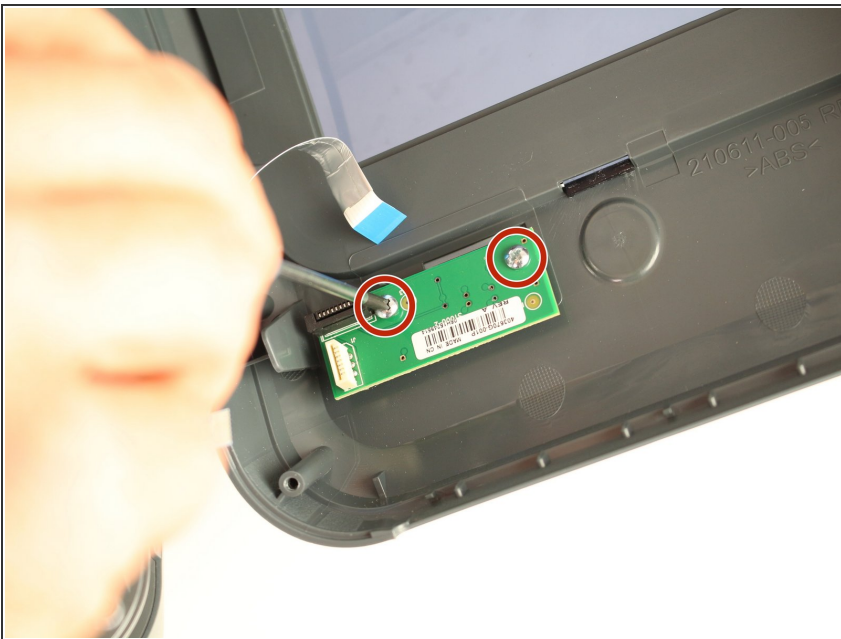
- Close the printer and remove the top cover.

## Step 3



- Carefully remove the ribbon cables from feed key.

## Step 4



- Remove the two P0 6mm screws securing the feed key.



## Step 5



- Lift and remove the feed key from the printer.

To reassemble your device, follow these instructions in reverse order.