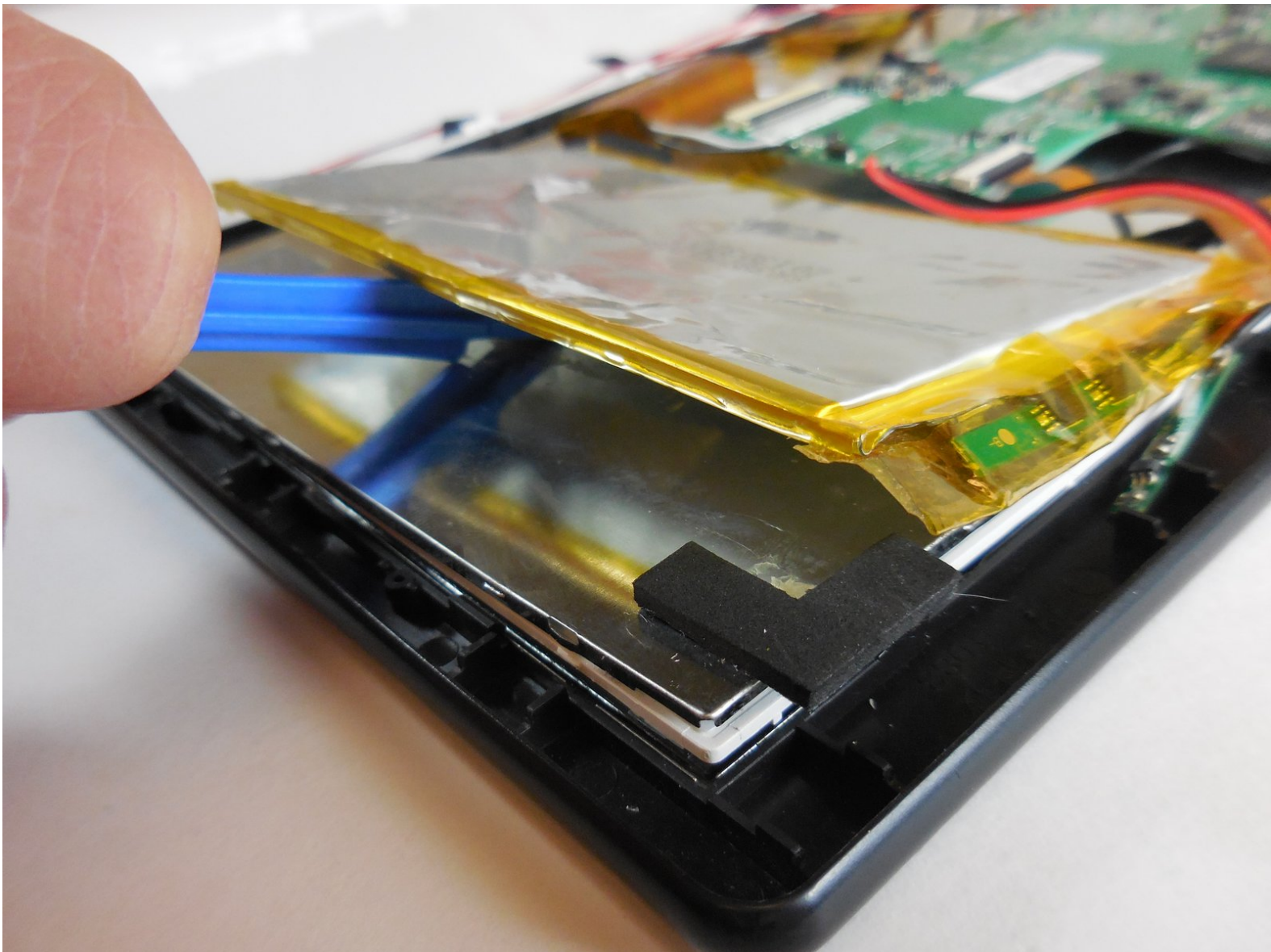




Zeki Droid Tablet Battery Replacement

Replace the short-termed life of your battery to keep your tablet's power going.

Written By: Kyla



INTRODUCTION

This guide will help you to disassemble your tablet and replace your battery. This procedure should take no more than forty minutes to complete. The process will include using a soldering tool and sharp objects.

TOOLS:

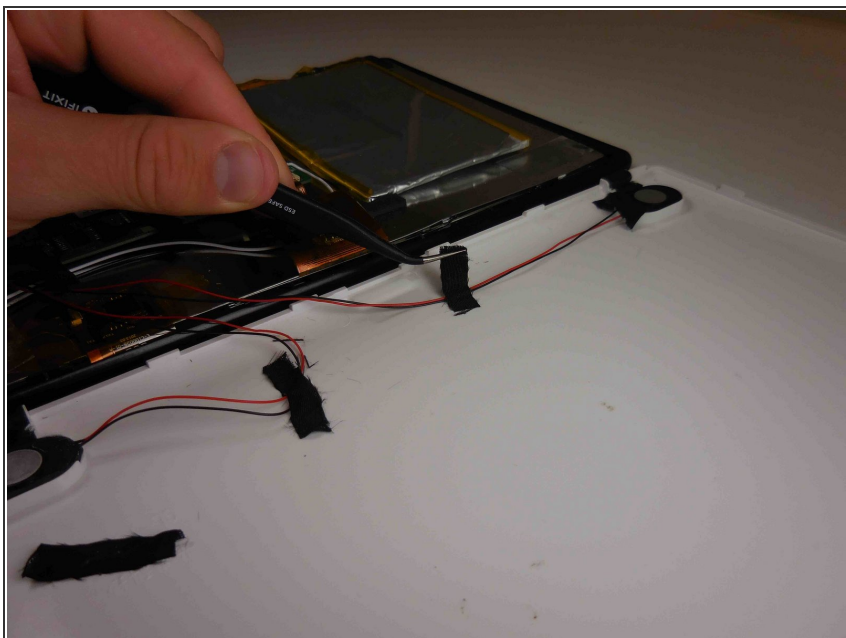
- [Soldering Iron](#) (1)
 - [Spudger](#) (1)
 - [iFixit Opening Tools](#) (1)
-

Step 1 — Back Casing



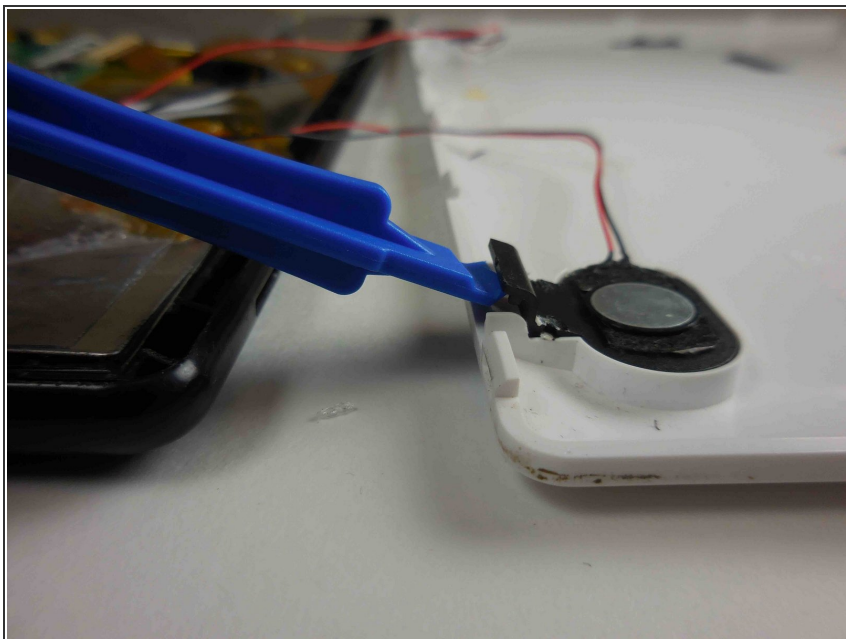
- Remove the back casing by slowly popping each tab out with a plastic opening tool.

Step 2



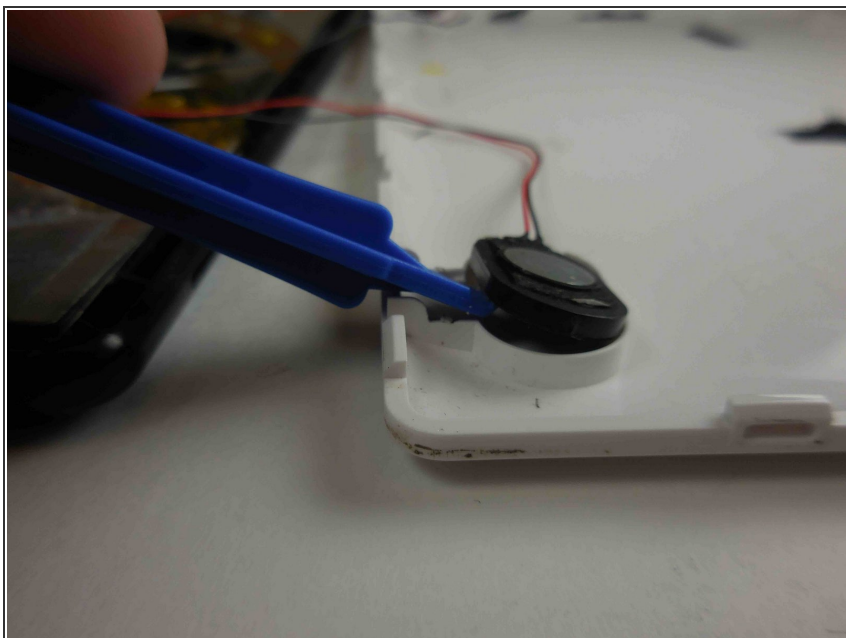
- Carefully remove the tapes one by one from the connecting wires with tweezers.

Step 3



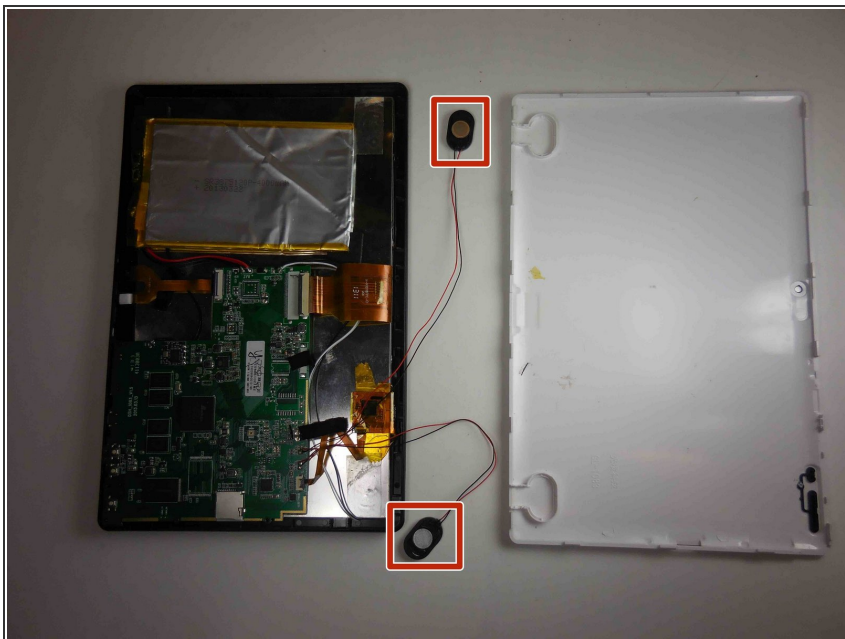
- Carefully remove the black clips from both sides of the casing with a plastic opening tool.
- ⓘ The clips should pop off separate from the speakers.

Step 4



- Carefully remove the speakers from the casing.
- ⚠ Do not tug on the speakers because they are connected to fragile wires.

Step 5



- Carefully pull the speakers away from the back casing.

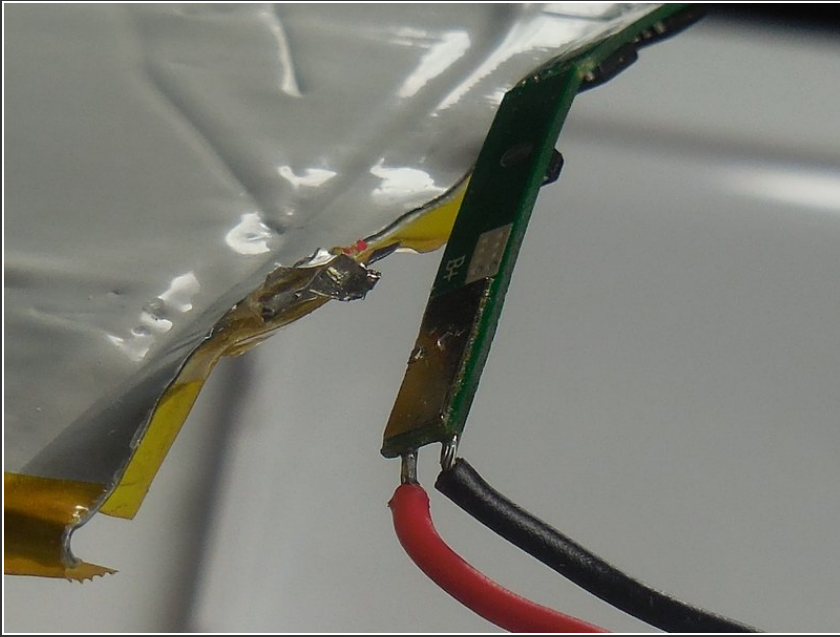
Step 6 — Battery



- To remove the battery use an iFixit opening tool to pry the battery apart from the sticky glue.

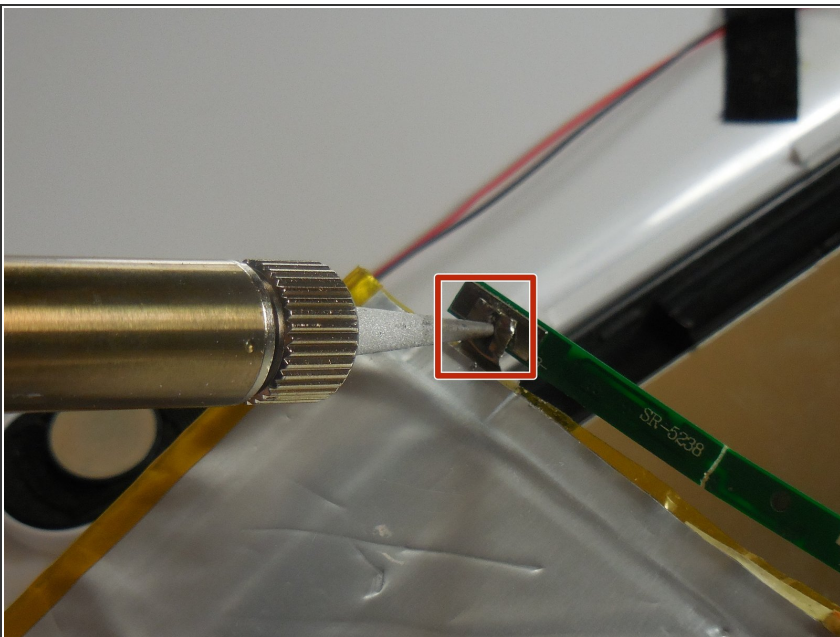
⚠ Do not bend the battery.

Step 7



- To completely disconnect the battery, locate the two metal tabs connected to the small circuit board.
- Using a soldering tool, you will desolder the tabs from the circuit board.
- ✦ Please refer to the [How To Solder and Desolder Connections](#)
- ⓘ If your replacement battery already has the small circuit board attached, you can desolder the red and black wires connected to the mother board instead of the metal tabs.

Step 8



- To insert the new battery, you will need to solder the two new metal tabs back onto the small circuit board.
- Please refer to [How To Solder and Desolder Connections](#)
- ⓘ If you have the battery with the circuit board connected, then you can solder the red and black wires back to the mother board.

To reassemble your device, follow these instructions in reverse order.