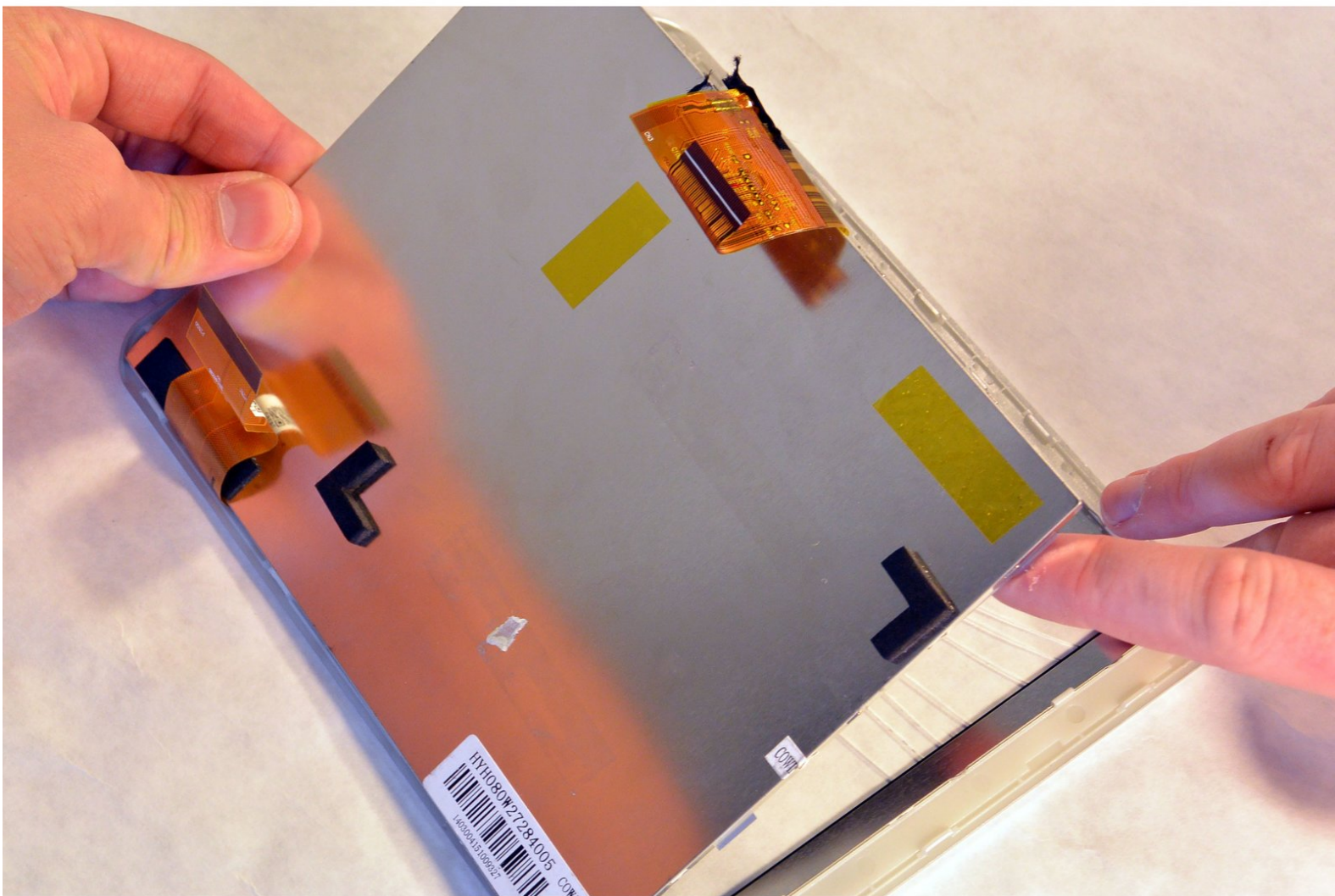




Zeki TBQG884B Digitizer Touch Screen

This guide will assist in the step-by-step process of replacing the digitizer screen.

Written By: David Wyman



INTRODUCTION

This guide requires three prerequisite guides for the proper replacement of the digitizer screen on the front of the Zeki tablet. Please, take a moment to familiarize yourself with those guides. They can be found in the details section of this guide.



TOOLS:

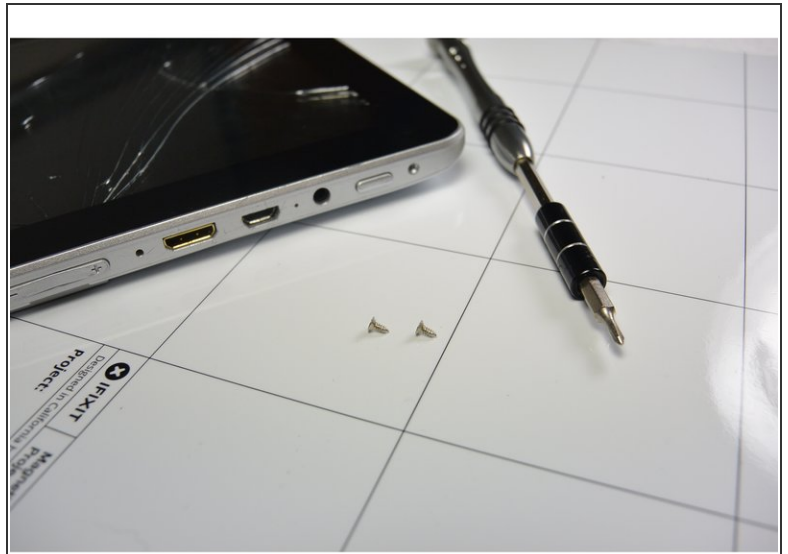
- [Phillips #1 Screwdriver](#) (1)
- [Spudger](#) (1)
- [64 Bit Driver Kit](#) (1)



PARTS:

- [Replacement Zeki Digitizer](#) (1)

Step 1 — Rear Case



- Remove the two screws from the end of the device where the ports are located.

Step 2



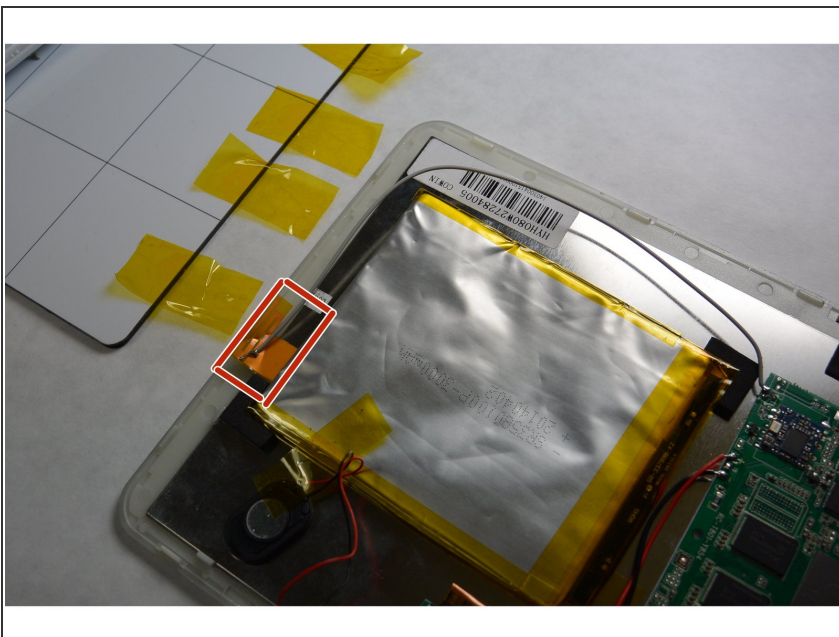
- Rest the tablet on the glass face.
- Insert the tip of a plastic opening tool into the small gap, between the grey and white plastic. Pry it open, (you should hear the clips opening up).
- Gently work your way around the perimeter of the tablet's edge.

Step 3



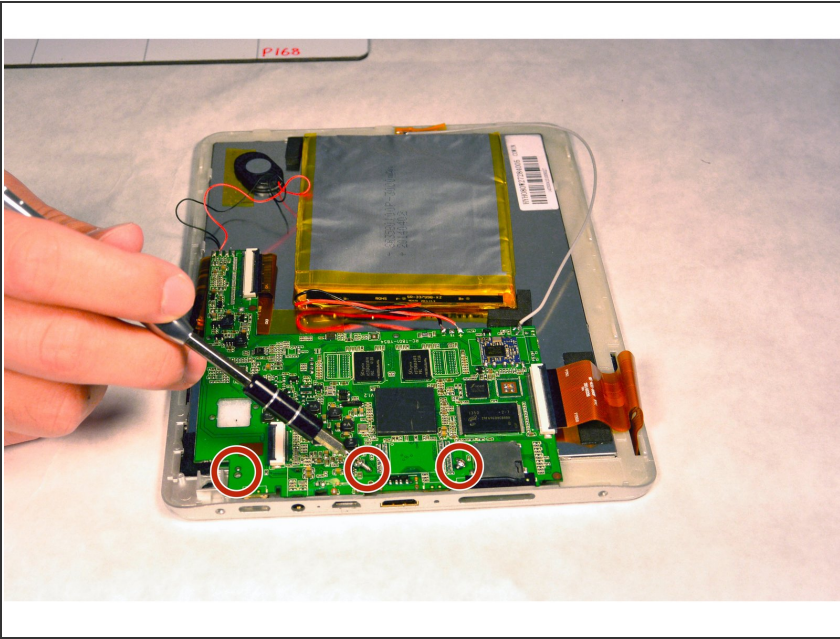
- Separate the back and face plates.
 - Remove any tape on the speaker, and detach the speaker from the back plate.
- ⚠ The speaker is connected to the motherboard by two soldered wires. Don't break them when you remove the speaker.

Step 4 — Motherboard



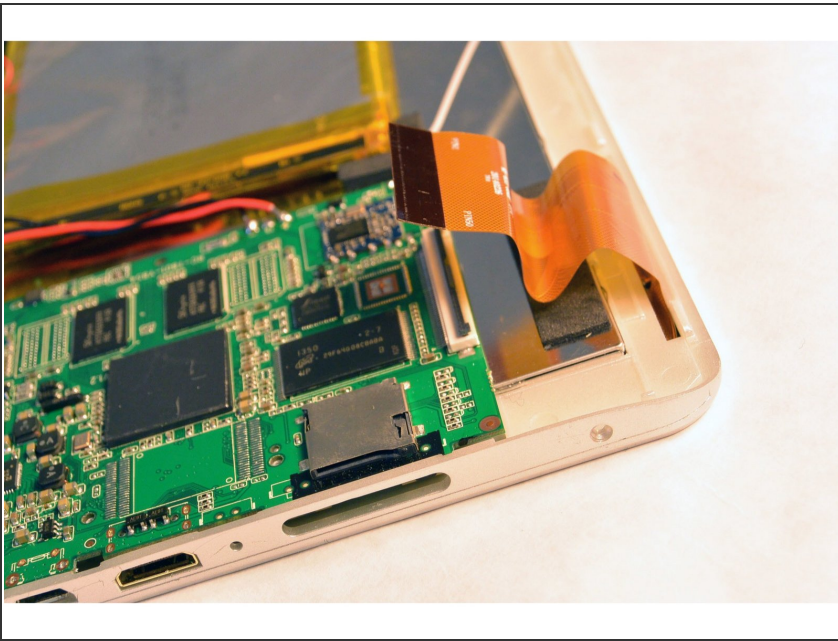
- Remove the Wi-Fi antenna element, which is highlighted by red in the picture, from the front plate.

Step 5



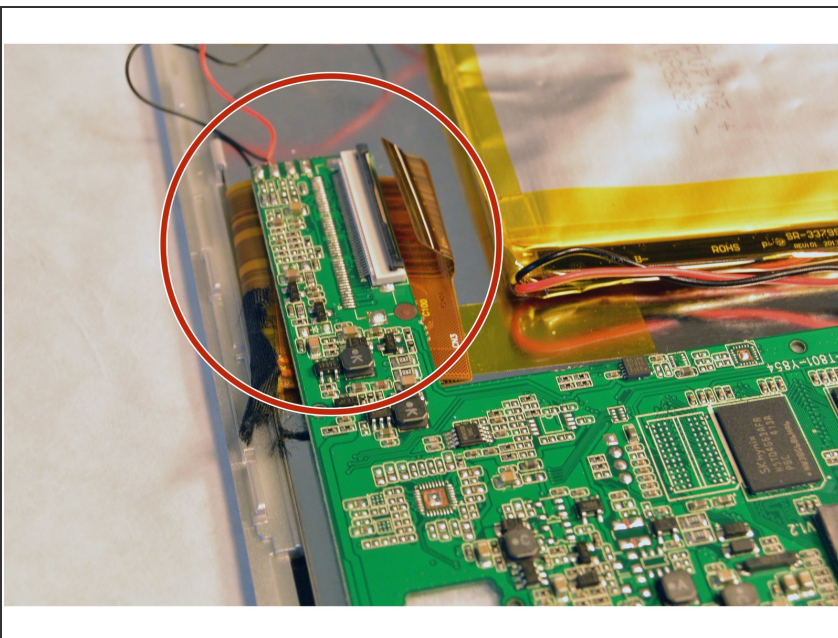
- Use the same screw driver as the previous step, and unscrew three screws. (Circled in the figure.)

Step 6



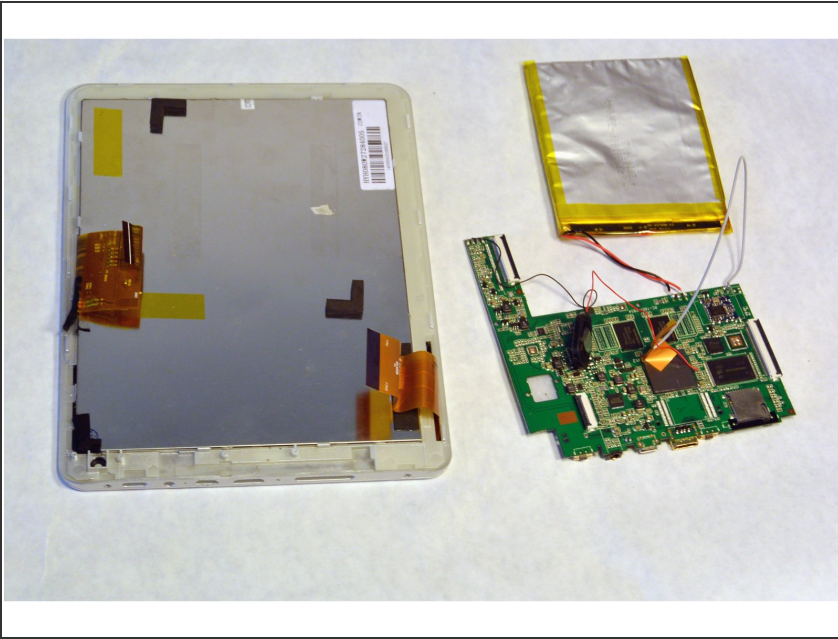
- Open the ZIF connector. It will look like a black locker, covering a wire ribbon. Then, remove the wire ribbon that connects the motherboard, and the screen.

Step 7




- Remove the other wire ribbon on the opposite side of the motherboard.

Step 8




- Now, remove the motherboard and replace it with a new one.

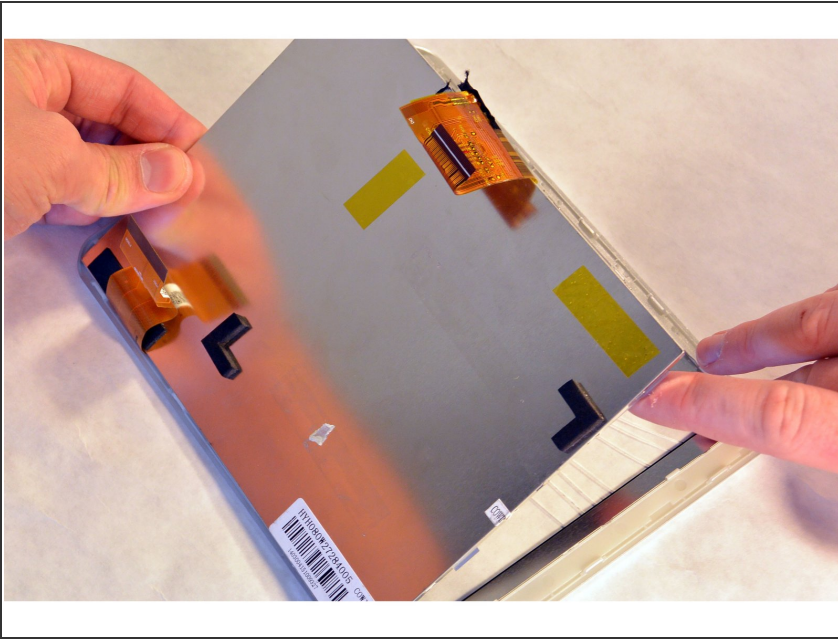
 Be careful not to damage the battery, or the speaker wires. They are soldered onto the motherboard.

Step 9 — LCD Screen




- Use an opening tool to detach the clip between the front frame, and the metal loader.
-  There are several clips on each side of the frame. Detach ALL of them before you open the loader.

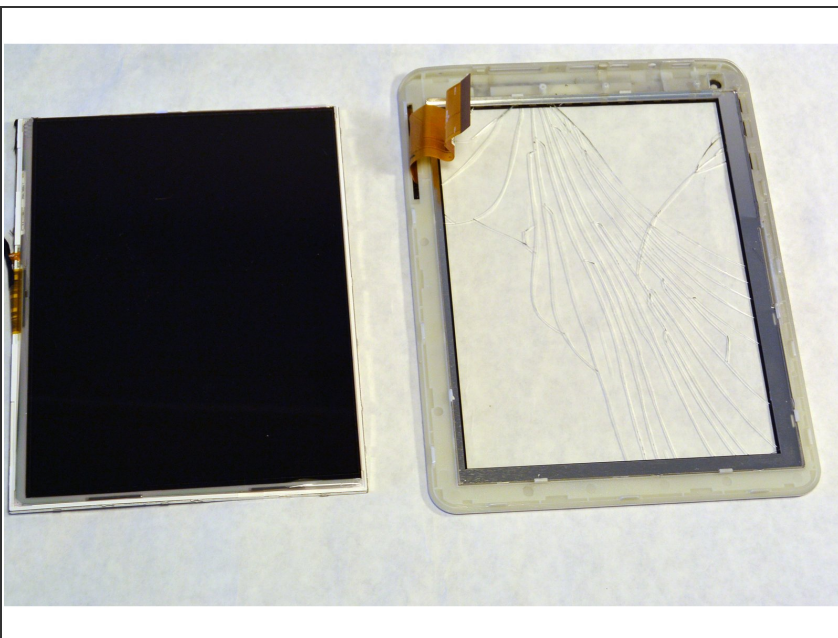
Step 10



- Open the loader, and detach the LCD screen.

 This assembly contains three separate pieces. Detach the display slowly, to avoid dropping any o

Step 11 — Digitizer Touch Screen



- The display is now separated from the digitizer.

To reassemble your device, follow these instructions in reverse order.