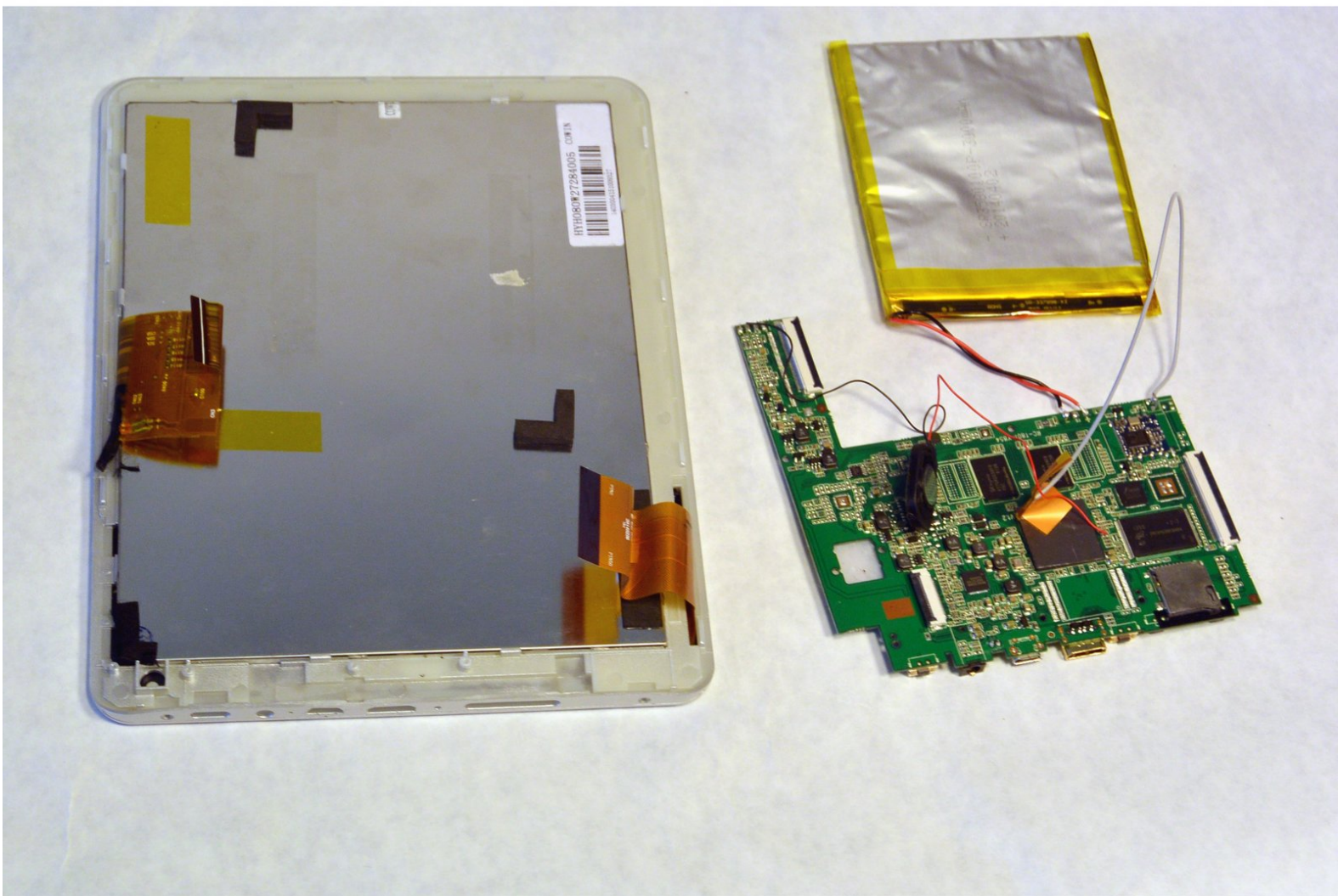




Zeki TBQG884B LCD Screen Replacement

This guide assists you in replacing the LCD screen of the Zeki TBQG884B 8" Tablet.

Written By: David Wyman



INTRODUCTION

This guide is a step-by-step process of replacing the LCD screen. The screen is connected directly to the motherboard, and assembled with the front frame. Look at the teardown guide for instructions on general disassembly.



PARTS:

- [Replacement Zeki LCD Display](#) (1)
-

Step 1 — Rear Case



- Remove the two screws from the end of the device where the ports are located.

Step 2



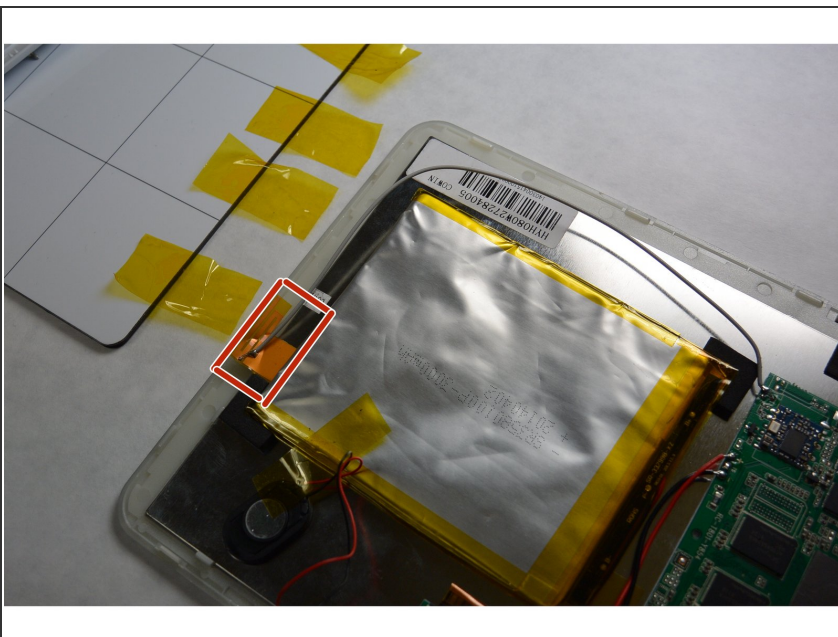
- Rest the tablet on the glass face.
- Insert the tip of a plastic opening tool into the small gap, between the grey and white plastic. Pry it open, (you should hear the clips opening up).
- Gently work your way around the perimeter of the tablet's edge.

Step 3



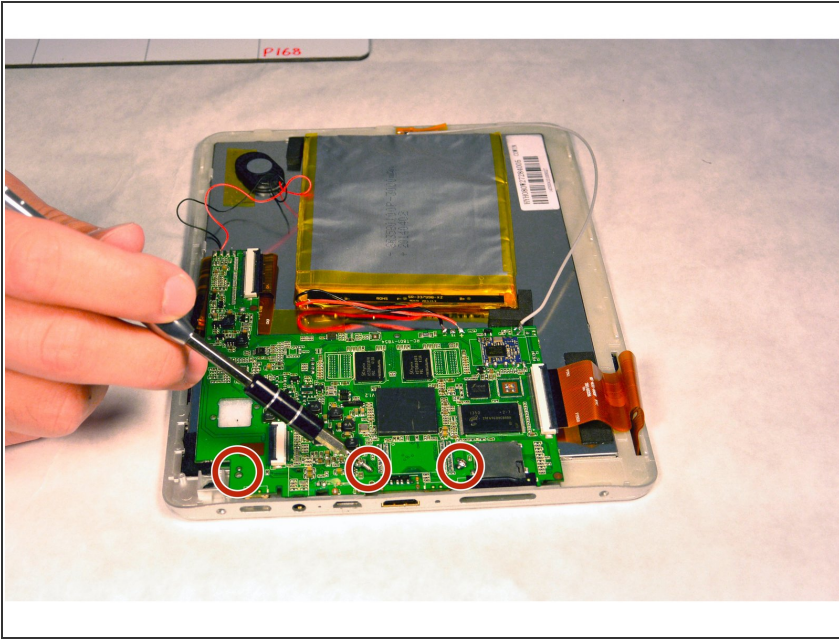
- Separate the back and face plates.
 - Remove any tape on the speaker, and detach the speaker from the back plate.
- ⚠ The speaker is connected to the motherboard by two soldered wires. Don't break them when you remove the speaker.

Step 4 — Motherboard



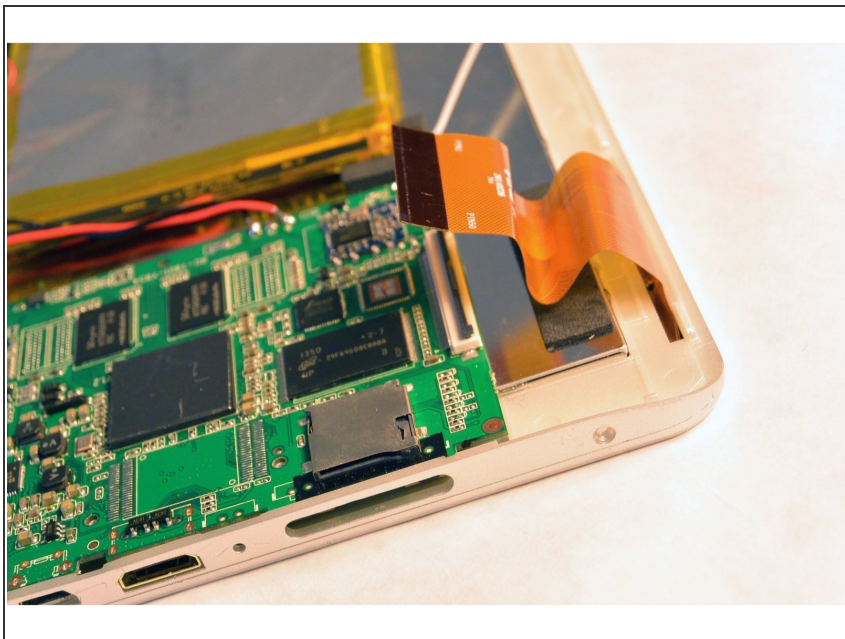
- Remove the Wi-Fi antenna element, which is highlighted by red in the picture, from the front plate.

Step 5



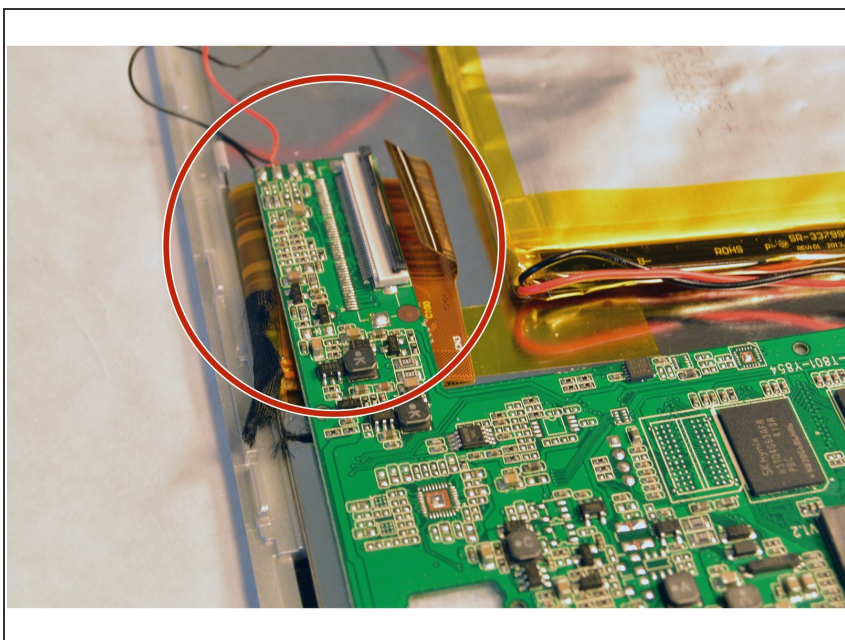
- Use the same screw driver as the previous step, and unscrew three screws. (Circled in the figure.)

Step 6



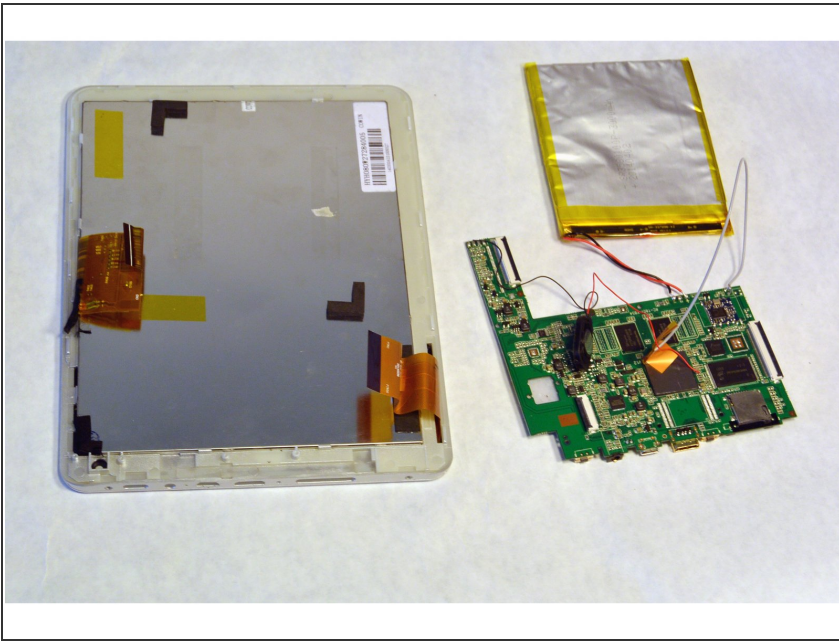
- Open the ZIF connector. It will look like a black locker, covering a wire ribbon. Then, remove the wire ribbon that connects the motherboard, and the screen.

Step 7




- Remove the other wire ribbon on the opposite side of the motherboard.

Step 8




- Now, remove the motherboard and replace it with a new one.

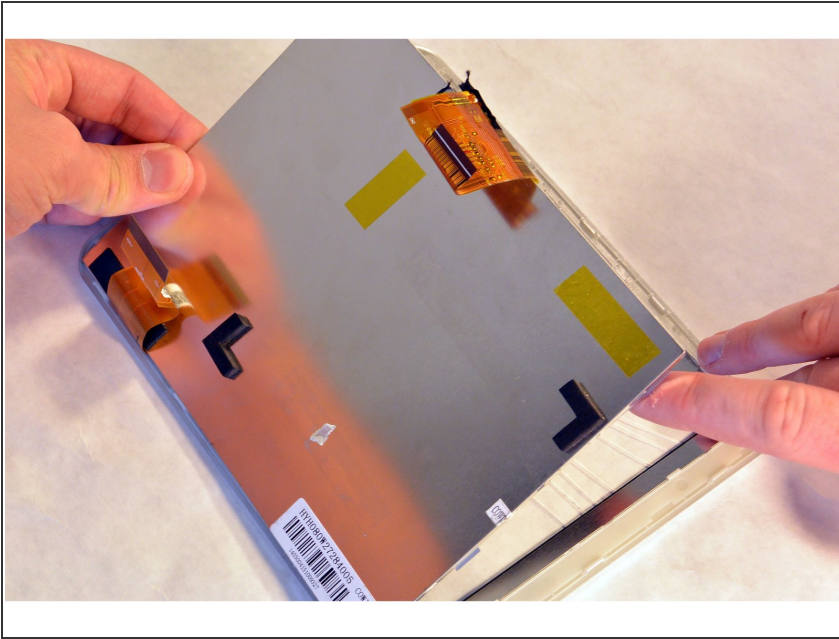
 Be careful not to damage the battery, or the speaker wires. They are soldered onto the motherboard.

Step 9 — LCD Screen



- Use an opening tool to detach the clip between the front frame, and the metal loader.
-  There are several clips on each side of the frame. Detach ALL of them before you open the loader.

Step 10



- Open the loader, and detach the LCD screen.

⚠ This assembly contains three separate pieces. Detach the display slowly, to avoid dropping any o

To reassemble your device, follow these instructions in reverse order.